

INDEX OF SHEETS

SHEET NO.	TITLE PAGE
" "	" 2 TYPICAL CROSS-SECTION OF IMPROVEMENT } ONE COURSE CEMENT CONCRETE PAVEMENT-TYPE B
" "	" 3 DETAILS OF CONSTRUCTION }
4-20	PLAN AND PROFILE SHEETS

STATE OF VERMONT
STATE HIGHWAY DEPARTMENT

PLAN AND PROFILE OF PROPOSED
STATE HIGHWAY

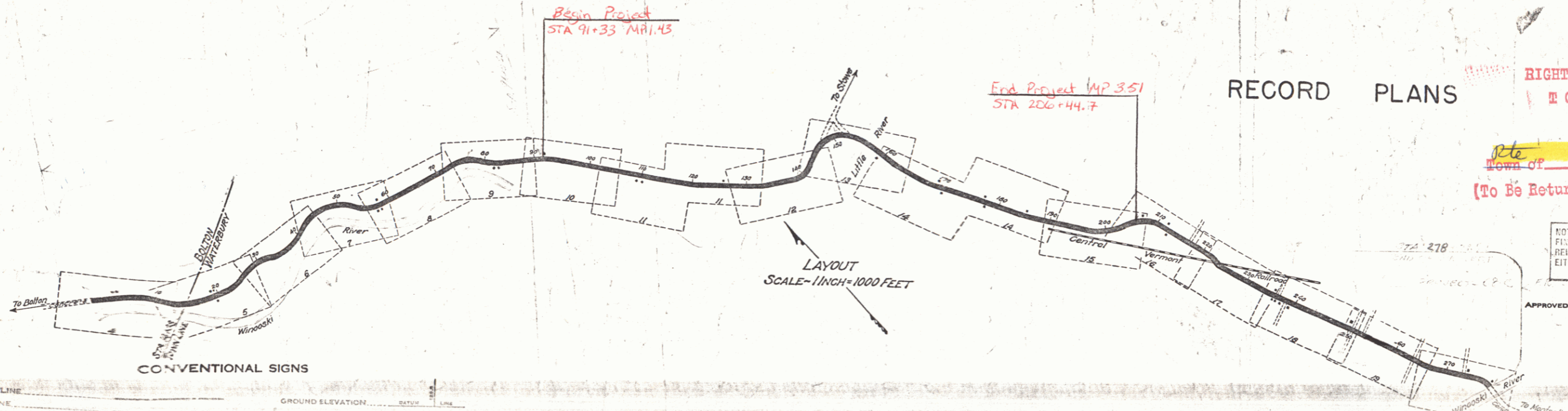
TOWNS OF BOLTON-WATERBURY
BURLINGTON-MONTPELIER ROAD

Pin #99R082
Project NRH 68C

FED. ROAD DIST. NO.	STATE	PROJ. NO.	FISCAL YEAR	SHEET NO.	TOTAL SHEETS
9	VT.	68-C	1929	1	1



SCALE - 1 INCH = 4 MILES



RECORD PLANS
RIGHT-OF-WAY DIVISION
TOWN FILE
PERPETUAL
Town of US 2
(To Be Returned To R.O.W. Division)

NOTE: ANY FURTHER INFORMATION CONCERNING FINAL QUANTITIES, ADJUSTMENTS OR OTHER DETAILS RELATIVE TO THIS PROJECT MAY BE FOUND IN EITHER THE FIELD BOOKS OR THE ESTIMATE FILE.

CONVENTIONAL SIGNS

COUNTY LINE	GROUND ELEVATION	SCALE	LINE
TOWN LINE	GRADE ELEVATION	SCALE	LINE
FENCE LINE			
STONE WALL			
UNFENCED PROPERTY			
GUARD RAIL			
TRAVELED WAY			
RAILROAD			

BOLTON-WATERBURY 68-C
RECORD PLANS
CONTR. FORCE ACCOUNT
FISCAL YEAR

CURVE DATA

DEFLECTION ANGLE	Δ
DEGREE OF CURVE	D
RADIUS OF CURVE	R
TANGENT DISTANCE	T
LENGTH OF CURVE	L
EXTERNAL DISTANCE	E
POINT OF INTERSECTION	P. I.
POINT OF CURVE	P. C.
POINT OF TANGENT	P. T.
POINT ON TANGENT	P. O. T.

This Project to be constructed in accordance with Standard 1929 Specifications. These plans subject to such revisions as may be required by the Chief Engineer.

RECOMMENDED
DISTRICT ENGINEER
BUREAU OF PUBLIC ROADS
RECOMMENDED FOR APPROVAL
CHIEF ENGINEER
BUREAU OF PUBLIC ROADS
APPROVED
DIRECTOR - BUREAU OF PUBLIC ROADS

3/7/29

DIST. #5 PLANS

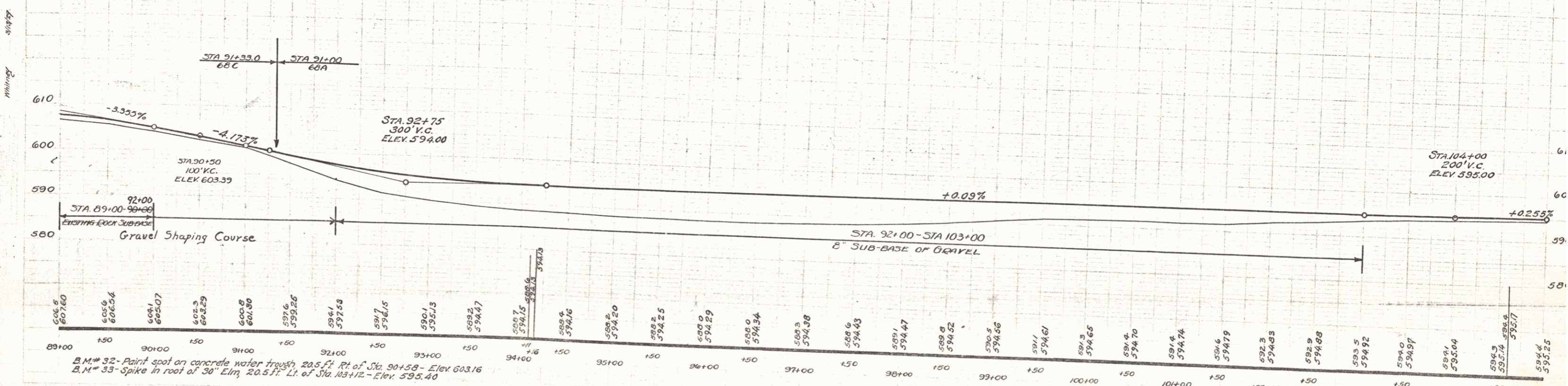
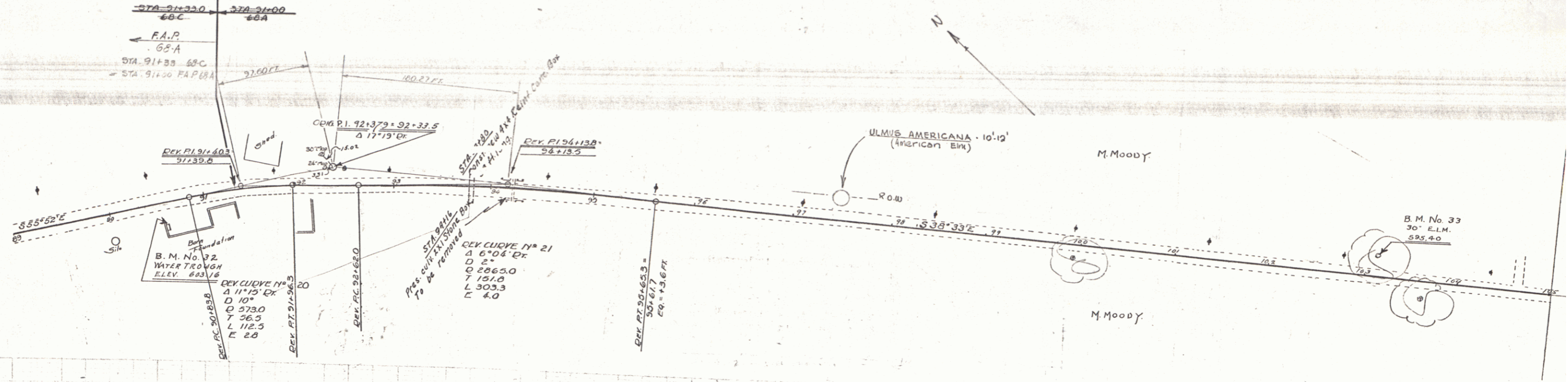
SERIES No. 68-C FILED
SHEET 1 OF

WOOD GUARD RAIL REQUIRED
 Length in Feet
 Left 24
 Right 24

NEW REIN. CONC. BOX CULVERTS REQUIRED
 Station Size 33+80 x 24
 CONC. A. Size 24x24 x 15.5
 15.5

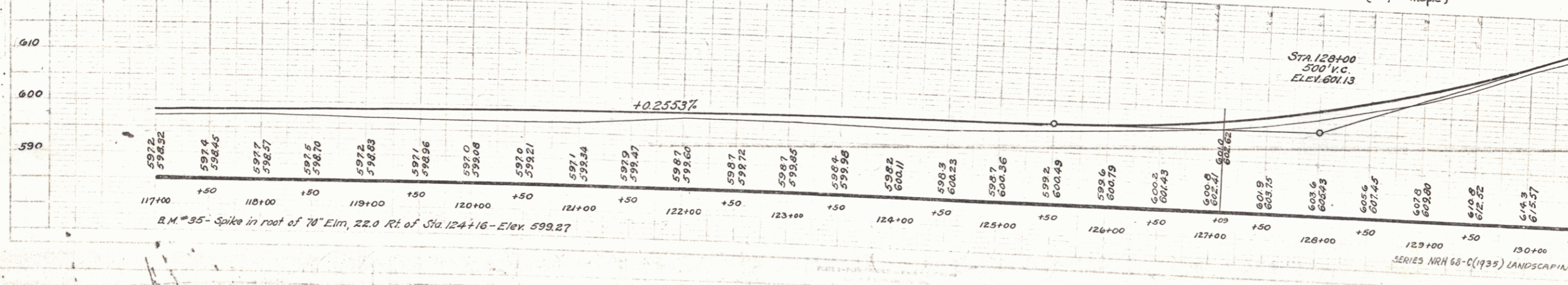
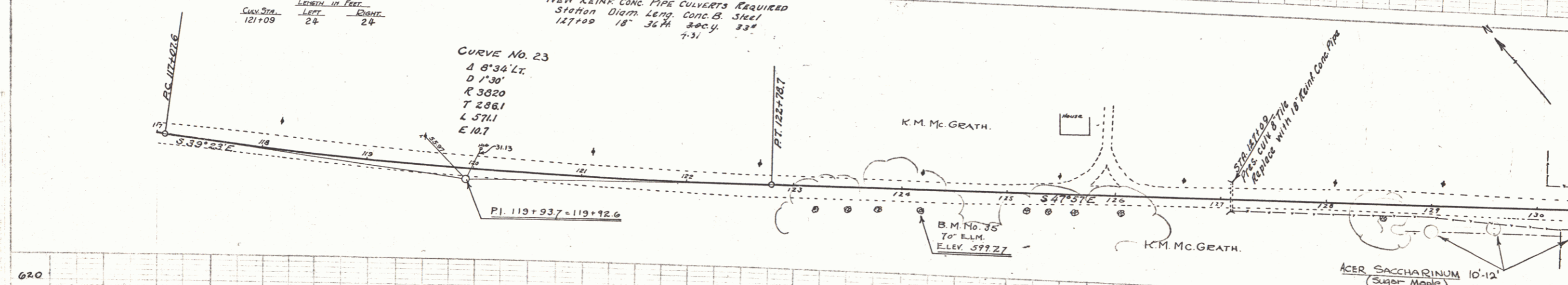
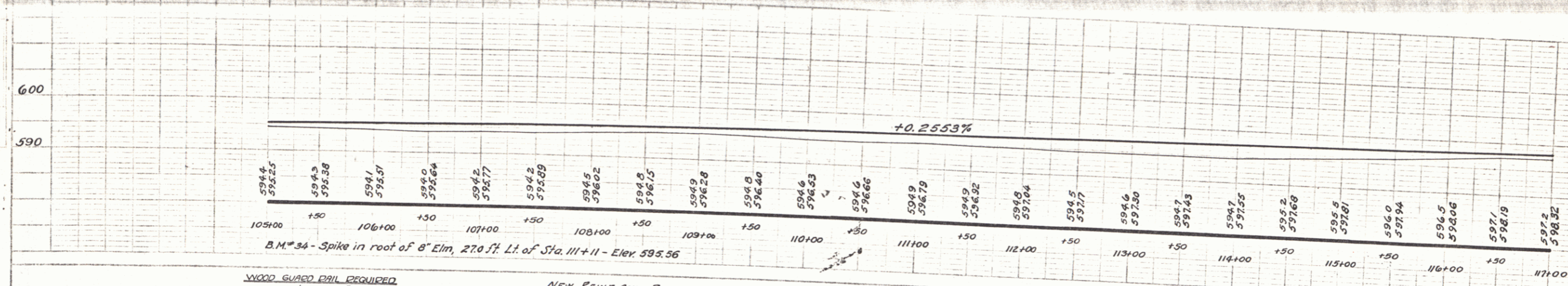
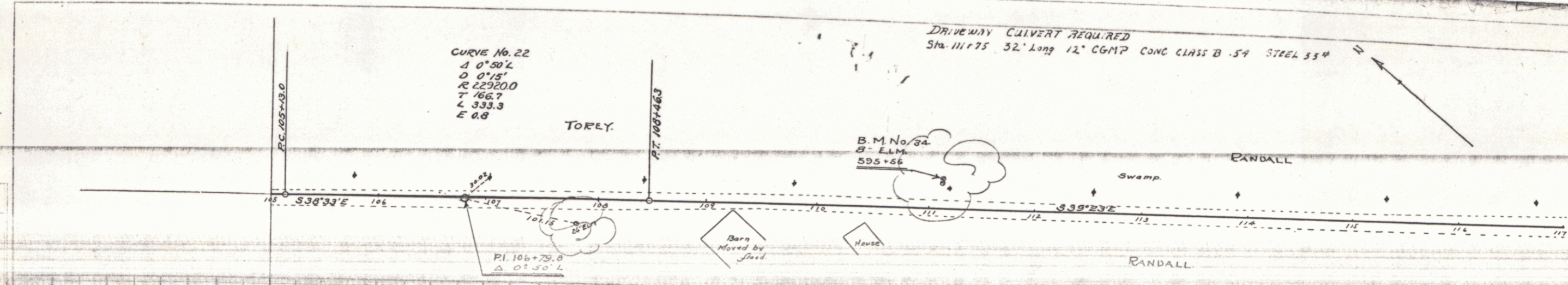
RD. ROAD STATE NRH PL. SHEET
 DIST. NO. 8 VT. 68(193) YEAR NO. 1435 3
 LANDSCAPING

STA. 91+33
 BEGINNING OF PROJECT
 NRH 68-C (1935) LANDSCAPING



B.M. # 32 - Paint spot on concrete water trough 20.5 ft. Pt. of Sta. 90+58 - Elev. 603.16
 B.M. # 33 - Spike in root of 30" Elm. 20.5 ft. Lt. of Sta. 103+12 - Elev. 595.40

SERIES NRH 68-C (1935) LANDSCAPING
 SERIES F-NO. 68-C
 SHEET 10 OF 12



3

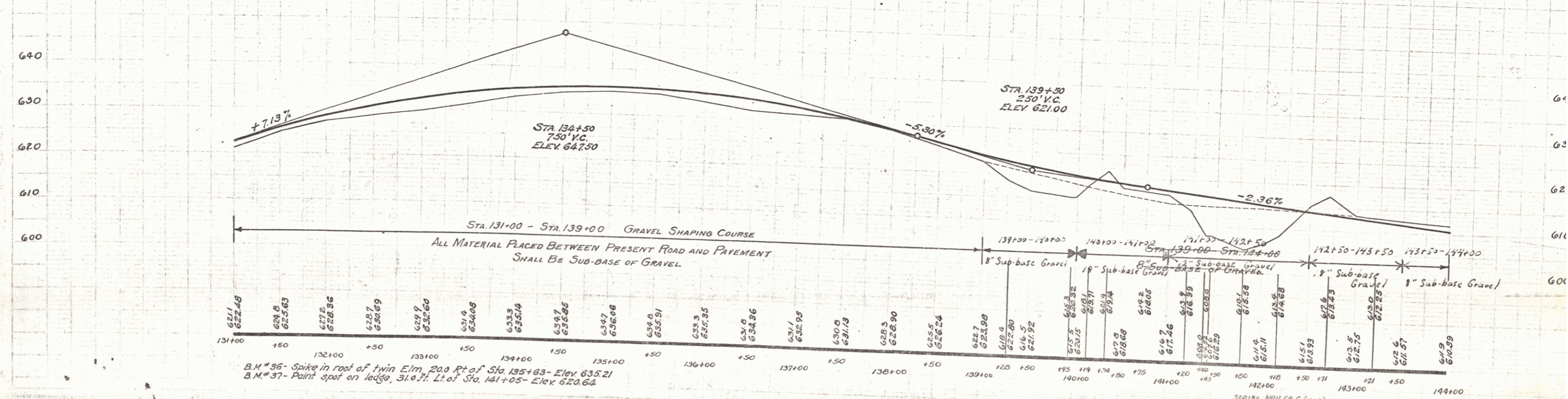
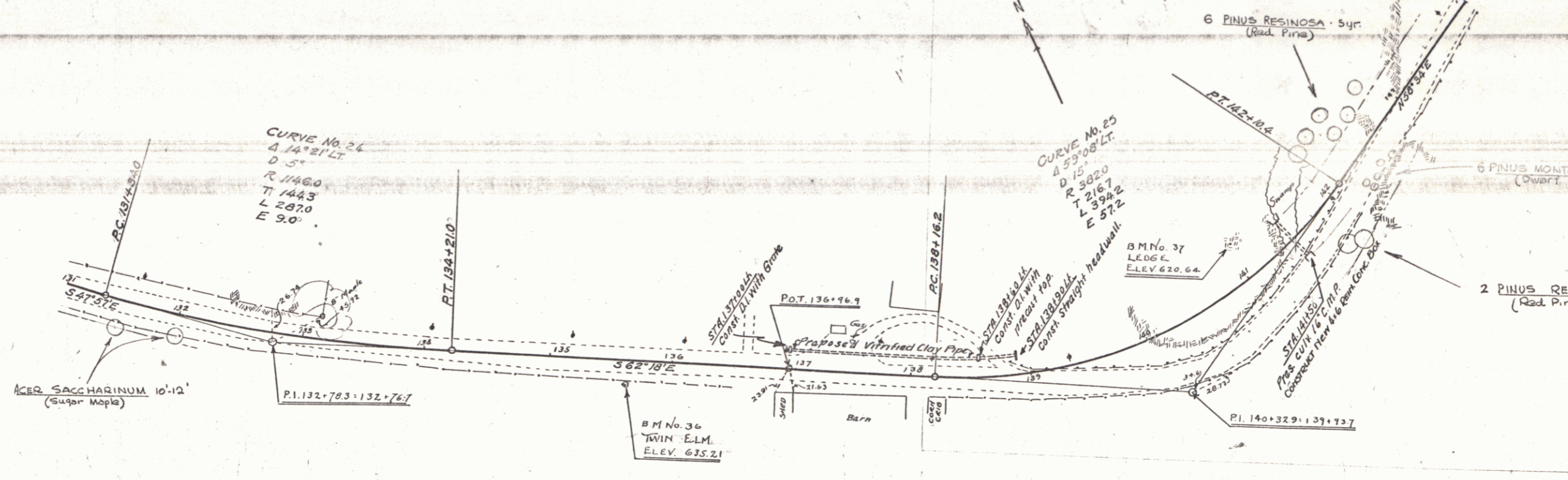
CABLE GUARD RAIL REQUIRED
 ON LEFT
 STA. 191+26-191+74 Length 48 Ft.
 ON RIGHT
 STA. 139+20-191+68 Length 248 Ft.

NEW REINFORCED CONCRETE BOX CULVERTS REQ'D
 Station Size Length Class A Steel
 141+50 4x6 36 Ft. 1000#
 0 32 32.9 2841

NEW VITRIFIED CLAY PIPE REQUIRED
 Sta. Diam. Length Conc. A Conc. B Steel D.I. 600#
 137+138+140 L.L. 12" 147 Ft.
 137+00 Left 12" 147
 138+60 " D.I. With Street Light 12" 147
 138+90 " Street Headwall 12" 17

DRIVEWAY CULVERTS REQUIRED
 Sta. 12" 60# MP Conc. C1-B Steel
 138+75 20
 136+60 18

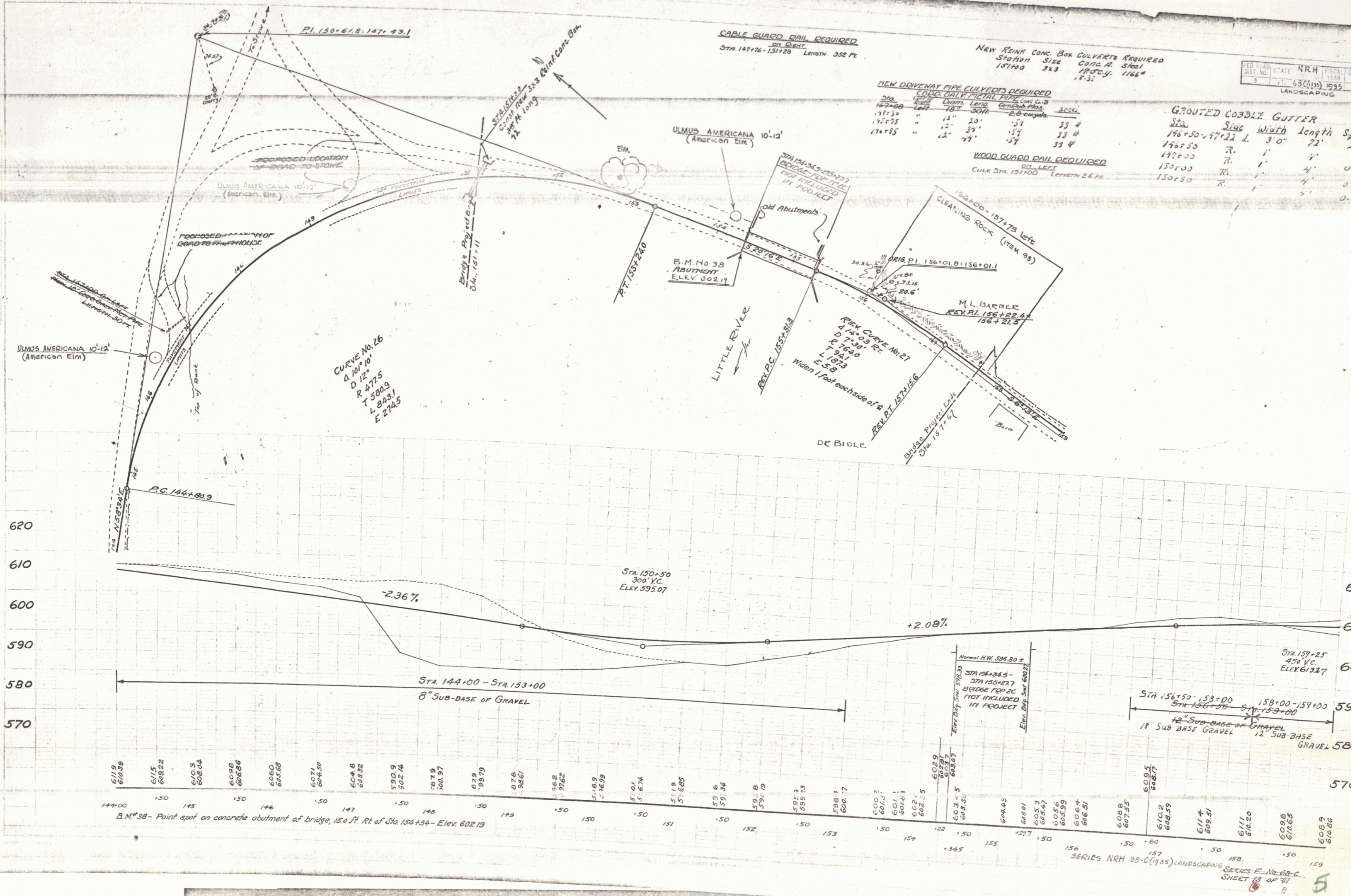
LANDSCAPING
 6 PINUS RESINOSA - 5yrs.
 6 PINUS MONTANA MUSHUS - 16'-24"
 (Dwarf Mountain Pine)
 2 PINUS RESINOSA - 5yrs.
 (Red Pine)



B.M. #36 - Spike in roof of Twin Elm, 20.0 Ft. of Sta. 135+63 - Elev. 635.21
 B.M. #37 - Paint spot on ledge, 31.0 Ft. Lt. of Sta. 141+05 - Elev. 620.64

SERIES NRH 68-C (1935) LANDSCAPING
 SHEET No. 68-C
 SHEET 5 OF 5

4



CABLE GUARD RAIL REQUIRED
 STA 147+76 - 151+28 Length 352 Ft.

NEW REINF CONC. BOX CULVERTS REQUIRED
 Station Size Conc. # Steel
 157+00 3x3 18" 4 # 166 #

NEW DRIVEWAY PIPE CULVERTS REQUIRED

Sta.	Length	Size	Conc. #	Steel
147+00	147	18"	18"	33 #
147+25	12	12"	18"	33 #
147+35	12	12"	18"	33 #

GROUTED COBBLE GUTTER

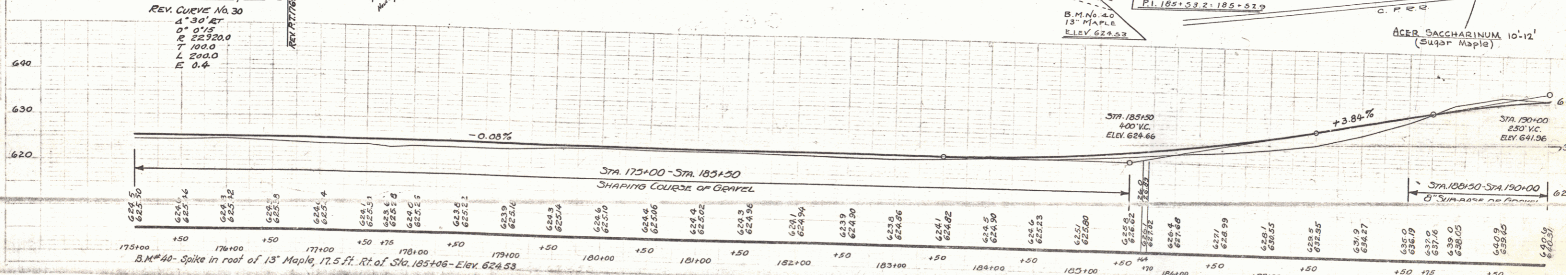
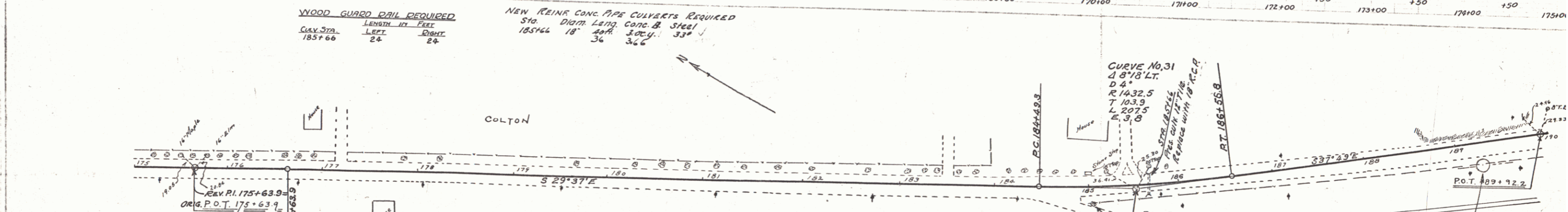
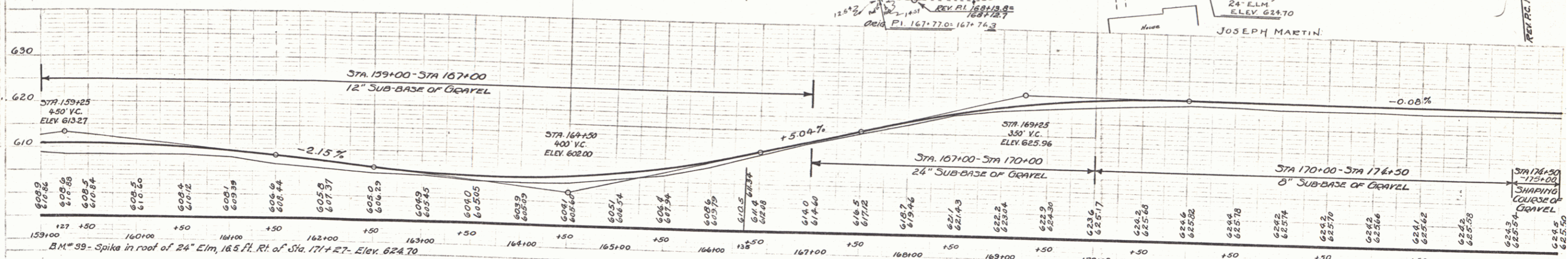
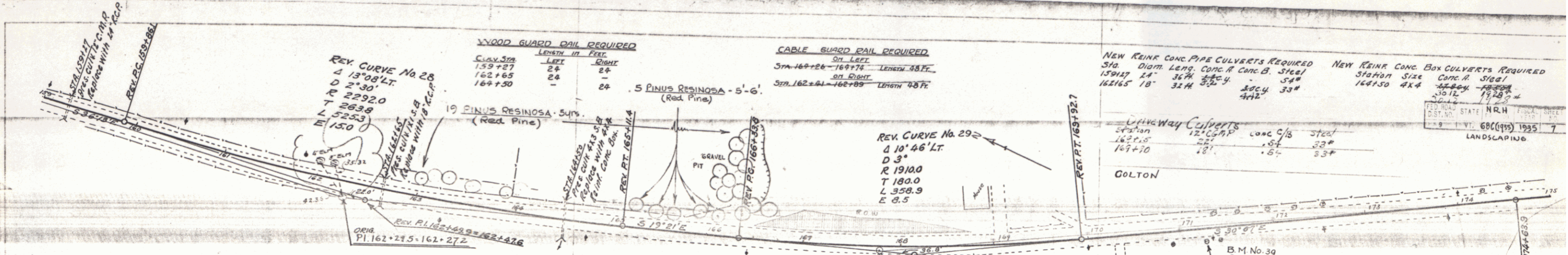
Sta.	Size	Width	Length	S
146+50 - 147+22	L	3' 0"	72'	
146+50	R	1'	4'	0
147+00	R	1'	4'	0
150+00	R	1'	4'	0
150+50	R	1'	4'	0

WOOD GUARD RAIL REQUIRED
 CULV. STA. 151+00 Length 26 Ft.

CURVE No. 26
 Δ 100' 10"
 R 4775'
 T 580.9'
 L 883.1'
 E 274.5'

B.M. #38 - Point spot on concrete abutment of bridge, 150 ft. Rt. of Sta. 154+34 - Elev. 602.19

Station	Elevation
144+00	611.9
144+00	614.39
145	611.5
145	608.22
145	608.04
146	609.8
146	606.86
146	605.68
147	607.1
147	604.0
147	604.8
147	603.32
148	590.9
148	602.74
148	600.97
149	602.9
149	98.79
149	607.8
149	94.67
150	94.2
150	97.62
150	511.89
150	516.99
150	51.04
150	51.674
151	511.9
151	516.05
152	51.6
152	51.34
152	51.8
152	51.19
152	51.6
153	592.7
153	595.13
153	598.1
153	600.17
154	600.2
154	601.1
154	601.63
154	602.35
154	602.9
154	603.7
154	603.97
155	604.45
155	605.91
155	605.3
155	605.47
156	605.6
156	605.99
156	606.4
156	606.57
157	609.8
157	607.95
157	610.2
157	608.25
158	611.4
158	609.31
158	611.1
158	610.20
159	609.8
159	610.25
159	610.9
159	610.65



B.M. #39 - Spike in roof of 24' Elm, 16.5 ft. Rt. of Sta. 171+27 - Elev. 624.70
 B.M. #40 - Spike in roof of 13' Maple, 17.5 ft. Rt. of Sta. 185+06 - Elev. 624.53
 B.M. No. 39 24' ELM ELEV. 624.70
 B.M. No. 40 13' MAPLE ELEV. 624.53
 SERIES NRH 68-C (1935) LANDSCAPING SHEET 7 OF 11

WOOD GUARD RAIL REQUIRED
Curb Sta 206+71
Left Right
14.4 2.1

CABLE GUARD RAIL REQUIRED
Stations Left Right
206+0 - 207+26
206+59 - 208+43
206+4

NEW REIN. CONC PIPE CULVERTS REQUIRED
Station Length Diam. Conc. Curb
210+30 40ft 18" 2.14 1.42
211+55 2026ft 18" 3.14 1.42
213+30 - - 18" 1.42 1.42
216+60 21700+8ft 12" 3.14 1.42
219+00 2026ft 12" 1.42 1.42

NEW VIT. CLAY PIPE REQUIRED
Station Lt. or Rt. Diam. Length Lin. Ft.
211+60 0ft 18" 50
211+60-213+30 Lt. 15" 172 160
213+30-213+80 Lt. 12" 32 40
217+00-219+00 Lt. 12" 200 200
219+00-220+00 Lt. 15" 100

GRADED COBBLE GUTTER REQUIRED
Station Width Length
208+50 RT 1'0" 4' 0.4
209+50 RT 1'0" 4' 0.4

CULVERT REPAIRS REQUIRED
Sta. Size Conc. R. Steel
206+71 3x2 1537 1065F

CONCRETE CATCH BASINS REQUIRED
Station Lt. of Lt. No. Grate C/A Conc
211+59 Lt. 1 1 3.35 CY
211+60 Lt. 1 1 3.35 CY

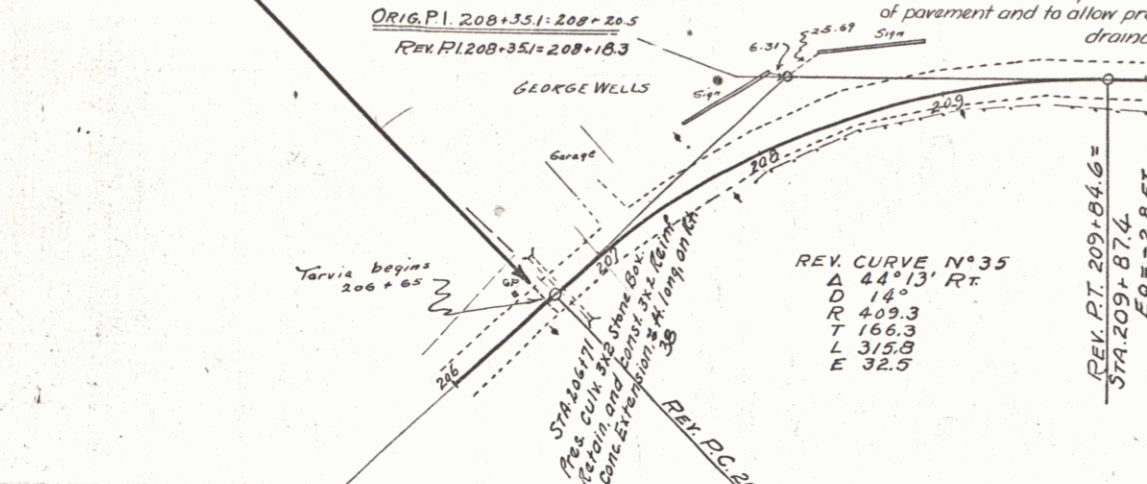
Driven Curb
Station Side Length
206+3 Lt. 22'
207+40 Lt. 6'

Relaying Pipe Culverts
Sta. 207+20 Length 48'

no landscaping

NOTE: Arrangements are to be made with the village trustees before any excavation is made in flower garden right of Sta. 211+00 - Sta. 212+00

STA. 206+65.0 BEGINNING OF 1ST SECTION
END OF PROJECT



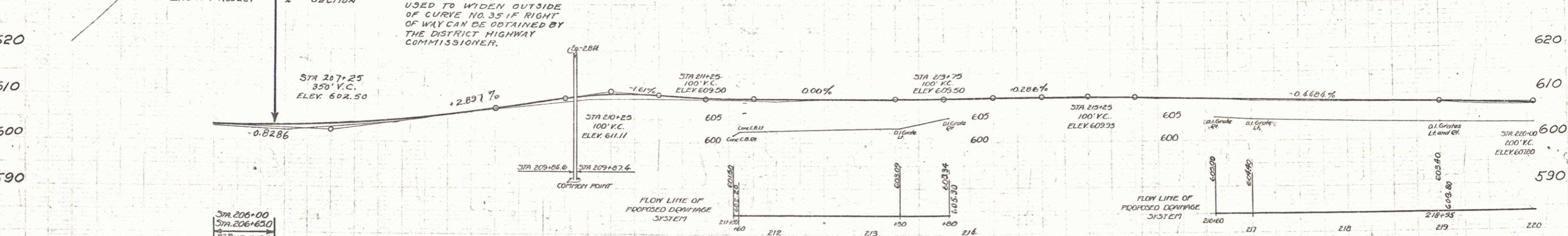
Mrs. LAWRENCE

A. NELSON

NOTE: Old road surface, where not excavated, to be scarified and removed from under pavement and used for shoulder construction.

NOTE: Drop Inlet Grates are to be placed as noted on cross-section sheets in order that they will be within the limits of proposed future construction of concrete curb and gutter.

STA. 206+65.0 BEGINNING OF 2ND SECTION
END OF PROJECT



ROCK EXCAVATION NOT USED AT STA. 195+00 TO STA. 197+00 TO BE USED TO WIDEN OUTSIDE OF CURVE NO. 35 IF RIGHT OF WAY CAN BE OBTAINED BY THE DISTRICT HIGHWAY COMMISSIONER.

NOTE: IF SUB-SOIL CONDITIONS ARE FOUND TO BE UNFAVORABLE, 10" SUB-BASE OF GRAVEL IS TO BE USED

B.M. #43 - Paint spot on concrete gas pump foundation, 36 ft. Lt. of Sta. 216+66 - Elev. 609.48

SERIES F No. 68-C
Sheet 1 of 3