

WOOD GUARD RAIL REQUIRED
Curb Sta 206+71
Left Right
14.4 2.1

CABLE GUARD RAIL REQUIRED
Stations Left Right
206+0 - 207+26
206+59 - 208+43
206+4

NEW REIN. CONC. PIPE CULVERTS REQUIRED
Station Length Diam. Conc. A Steel Conc. B Steel
210+30 40ft 18" 2.14 1.25 1.25 1.25
211+55 2026ft 18" 3.14 1.45 1.45 1.45
213+30 - - 12" 3.14 1.45 1.45 1.45
216+60 21700+8ft 12" 3.14 1.45 1.45 1.45
219+00 2026ft 12" 3.14 1.45 1.45 1.45

NEW VIT. CLAY PIPE REQUIRED
Station Length Diam. Length Lin. Ft.
211+60 18" 50
211+60-213+30 18" 172 160
213+30-213+80 18" 50
217+00-219+00 18" 200 200
219+00-220+00 18" 100

GRADED COBBLE GUTTER REQUIRED
Station Width Length
208+50 RT 1'0" 4' 0.4
209+50 RT 1'0" 4' 0.4

CULVERT REPAIRS REQUIRED
Sta. Size Conc. R. Steel
206+71 3x2 1537 1065F

CONCRETE CATCH BASINS REQUIRED
Station Length No. Grate C/A Conc.
211+55 1 1 3.35 CY
211+60 1 1 3.35 CY

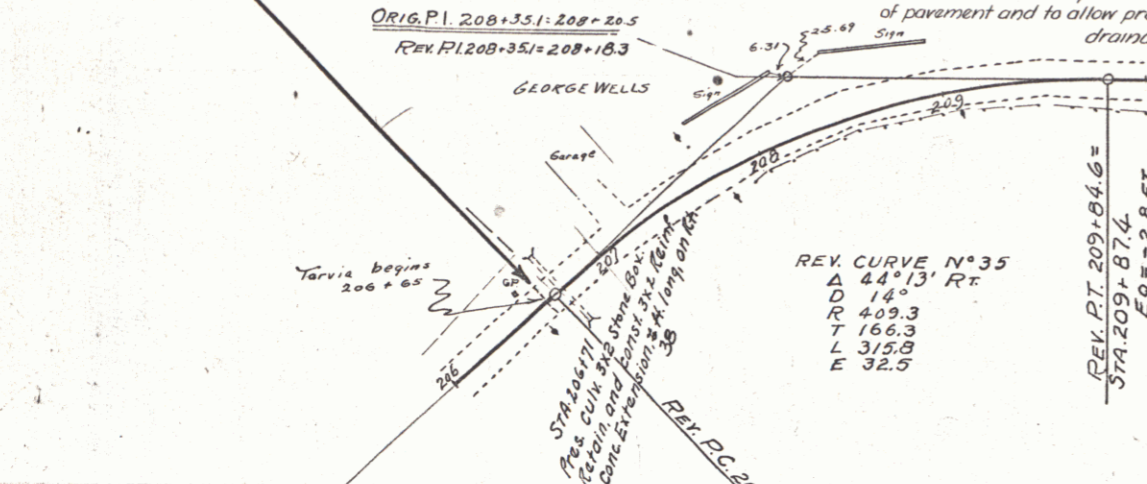
Driven Curb
Station Side Length
206+3 LT 22'
207+40 LT 6'

Relaying Pipe Culverts
Sta. 207+20 Length 48'

no landscaping

NOTE: Arrangements are to be made with the village trustees before any excavation is made in flower garden right of Sta. 211+00 - Sta. 212+00

STA. 206+65.0 BEGINNING OF 1ST SECTION
END OF PROJECT



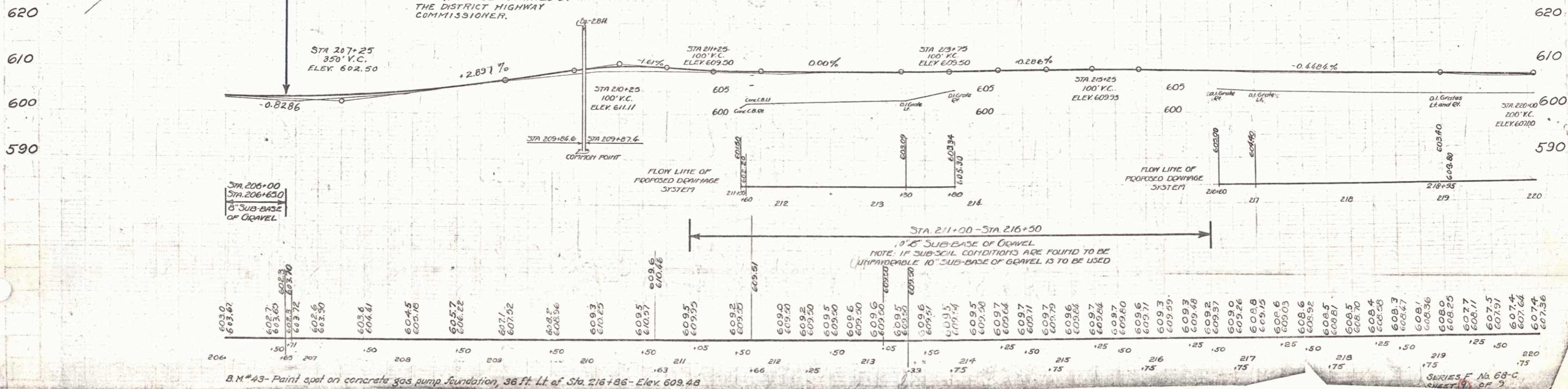
Note: Grouted Cobble Gutter is to be constructed, at water tub Sta. 210+60, as shown to protect edge of pavement and to allow proper drainage.

NOTE: Old road surface, where not excavated, to be scarified and removed from under pavement and used for shoulder construction.

NOTE: Drop Inlet Grates are to be placed as noted on cross-section sheets in order that they will be within the limits of proposed future construction of concrete curb and gutter.

STA. 206+65.0 BEGINNING OF 2ND SECTION
END OF PROJECT

ROCK EXCAVATION NOT USED AT STA. 195±00 TO STA. 197±00 TO BE USED TO WIDEN OUTSIDE OF CURVE NO. 35 IF RIGHT OF WAY CAN BE OBTAINED BY THE DISTRICT HIGHWAY COMMISSIONER.



B.M. #43 - Paint spot on concrete gas pump foundation, 36 ft. Lt. of Sta. 216+66 - Elev. 609.48

SERIES F No. 68-C
Sheet 1 of 3