

WOOD GUARD RAIL REQUIRED

CLAY STA	LENGTH IN FEET	LEFT	RIGHT
159+27	24	-	24
162+65	-	24	-
164+50	-	24	-

CABLE GUARD RAIL REQUIRED

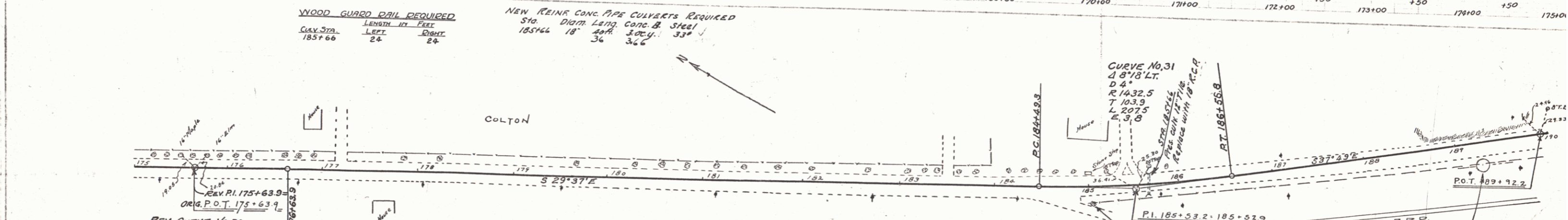
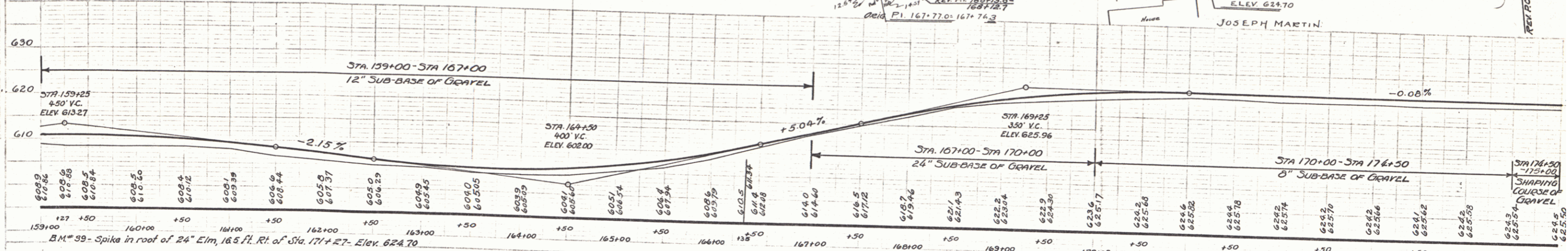
CLAY STA	LENGTH IN FEET	LEFT	RIGHT
164+26	38 FT	-	38 FT
162+61	48 FT	-	48 FT

NEW REIN. CONC. PIPE CULVERTS REQUIRED

STA	DIAM	LEN	CONC. A	CONC. B	STEEL
159+27	24"	38'	36#	36#	3#
162+61	18"	36'	36#	36#	3#

NEW REIN. CONC. BOX CULVERTS REQUIRED

STA	DIAM	LEN	CONC. A	CONC. B	STEEL
164+50	48"	48'	36#	36#	3#



WOOD GUARD RAIL REQUIRED

CLAY STA	LENGTH IN FEET	LEFT	RIGHT
185+66	24	-	24

NEW REIN. CONC. PIPE CULVERTS REQUIRED

STA	DIAM	LEN	CONC. A	CONC. B	STEEL
185+66	18"	36'	36#	36#	3#

