

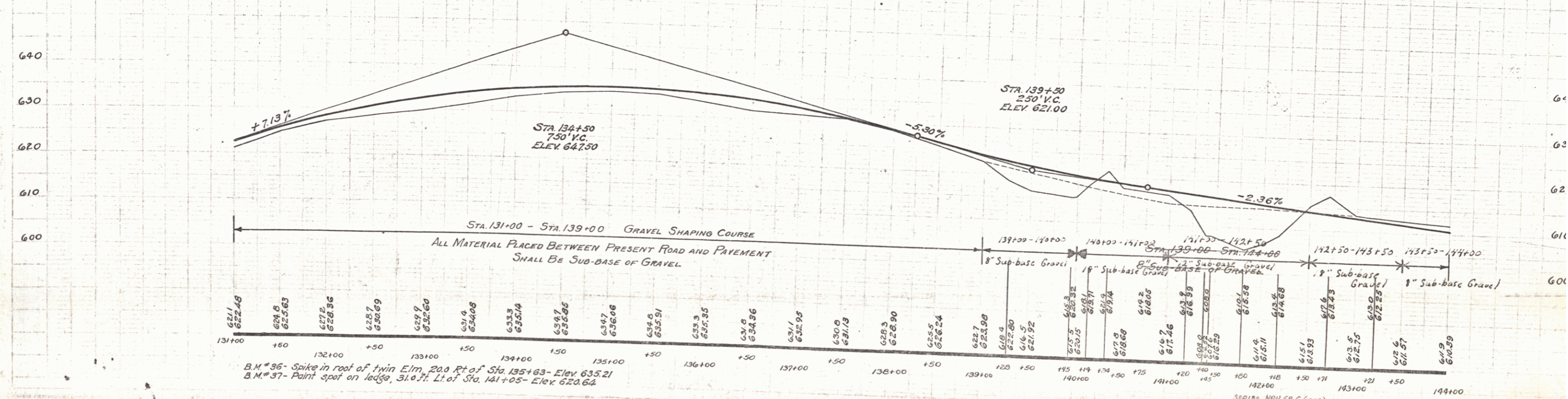
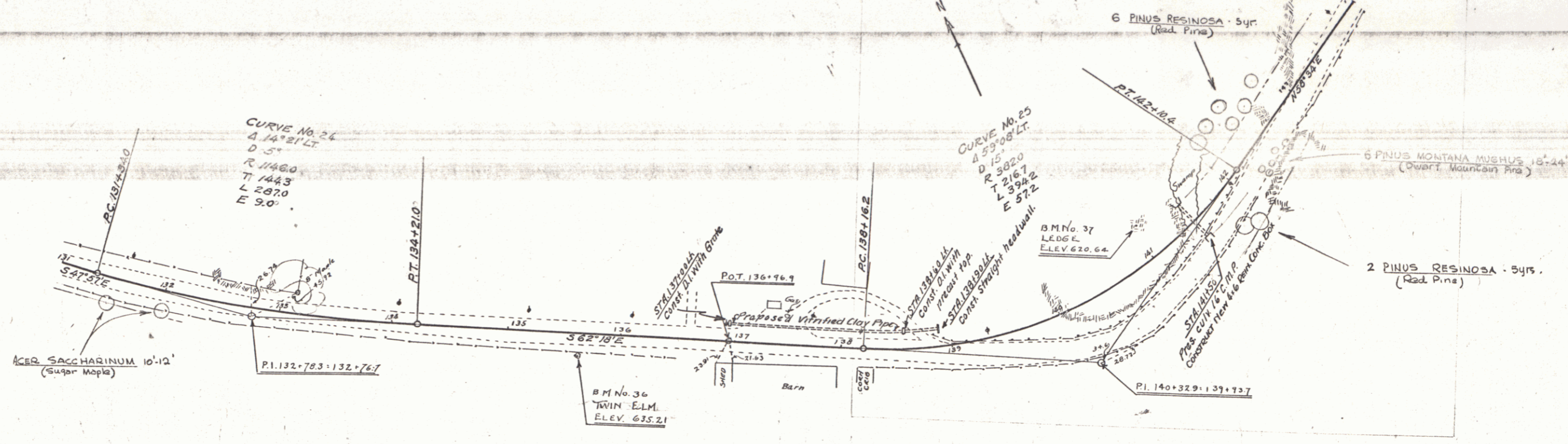
CABLE GUARD RAIL REQUIRED
 ON LEFT
 STA. 191+26-191+74 Length 48 Ft.
 ON RIGHT
 STA. 139+20-191+68 Length 248 Ft.

NEW REINFORCED CONCRETE BOX CULVERTS REQ'D
 Station Size Length Class A Steel
 141+50 4x6 36 Ft. 1000#
 0 32 32.9 2841

NEW VITRIFIED CLAY PIPE REQUIRED
 Sta. Diam. Length Conc. A Conc. B Steel D.I. Grade
 137+138+140 L.L. 12" 147 Ft.
 137+00 Left 12" 147 Ft.
 138+60 " D.I. With Street Light 12" 147 Ft.
 138+90 " Street Headwall 12" 147 Ft.

DRIVEWAY CULVERTS REQUIRED
 Sta. 12" 60#MP Conc. C1-B Steel
 136+75 20
 136+60 18

ED. ROAD STATE: NRH
 DIST. NO. 3
 V.I. 68(1935)
 SCALE: 1" = 40'
 SHEET NO. 5
 LANDSCAPING



B.M. #36 - Spike in roof of Twin Elm, 20.0 Ft. of Sta. 135+63 - Elev. 635.21
 B.M. #37 - Paint spot on ledge, 31.0 Ft. Lt. of Sta. 141+05 - Elev. 620.64

SERIES NRH 68-C (1935) LANDSCAPING
 SERIES - No. 68-C
 SHEET No. OF 5
 5

4