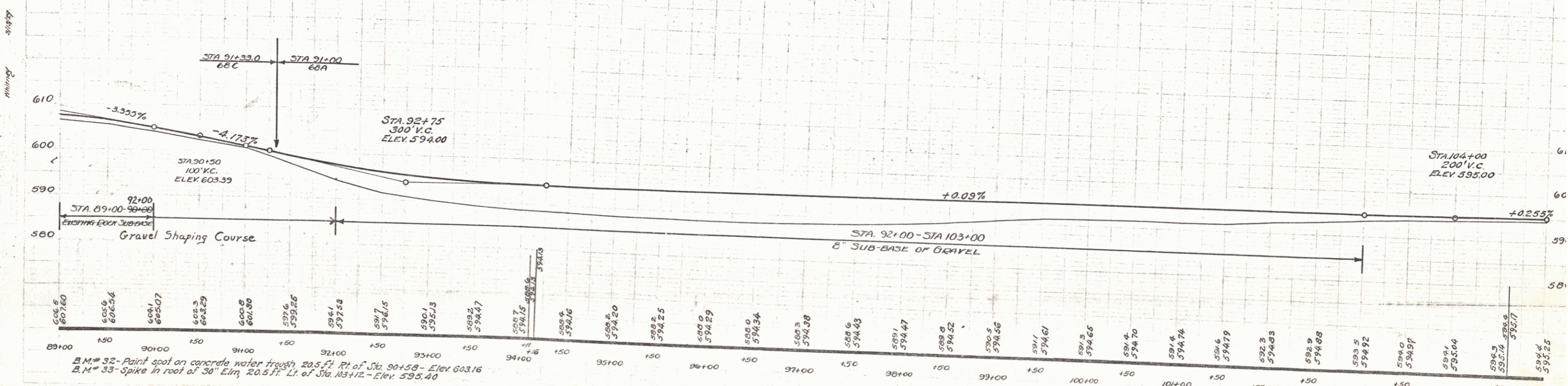
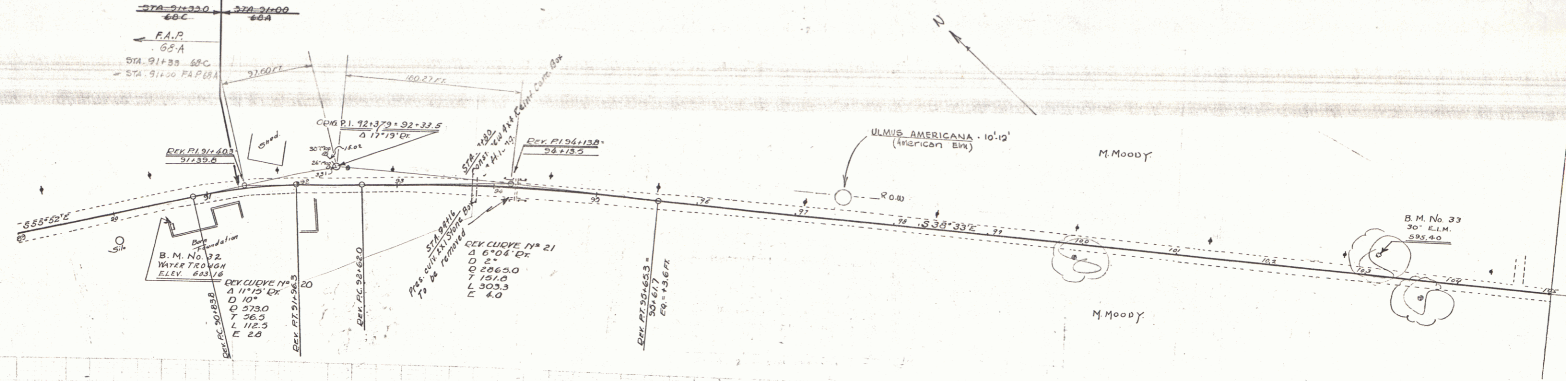


WOOD GUARD RAIL REQUIRED  
 Length in Feet  
 Left 24  
 Right 24

NEW REIN. CONC. BOX CULVERTS REQUIRED  
 Station Size 33+80 x 24  
 CONC. A. Size 15x15  
 15'4"

RD. ROAD STATE NRH PL. SHEET  
 DIST. NO. 8 VT. 68(193) YEAR NO. 1435 3  
 LANDSCAPING

STA. 91+33  
 BEGINNING OF PROJECT  
 NRH 68-C (1935) LANDSCAPING



B.M. # 32 - Paint spot on concrete water trough 20.5' Lt. of Sta. 90+50 - Elev. 603.16  
 B.M. # 33 - Spike in root of 30" Elm. 20.5' Lt. of Sta. 103+12 - Elev. 595.40

SERIES NRH 68-C (1935) LANDSCAPING  
 SERIES # - No. 68-C  
 SHEET 10 OF 12

2