

INDEX OF SHEETS	
SHEET NO.	TITLE PAGE
2	TYPICAL CROSS-SECTION OF IMPROVEMENTS
3	PLAN AND PROFILE STA. 0+00 - 12+00
4	" " " " 12+00 - 26+00
5	" " " " 26+00 - 40+00
6	" " " " 40+00 - 56+00
7	" " " " 56+00 - 68+00
8	" " " " 68+00 - 84+00
9	" " " " 84+00 - 91+00
10	C ULVERT
11	26 CROSS SECTIONS

FEDERAL AID PROJECT NO.	STATE PROJECT NO.
9	Vt. 68A 1923

STATE OF VERMONT
STATE HIGHWAY DEPARTMENT

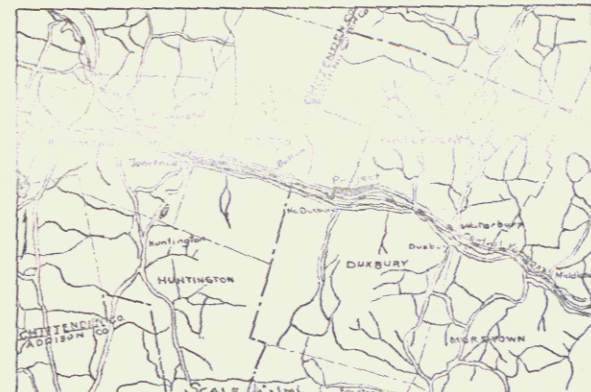
PLAN AND PROFILE OF PROPOSED
STATE HIGHWAY

FEDERAL AID PROJECT

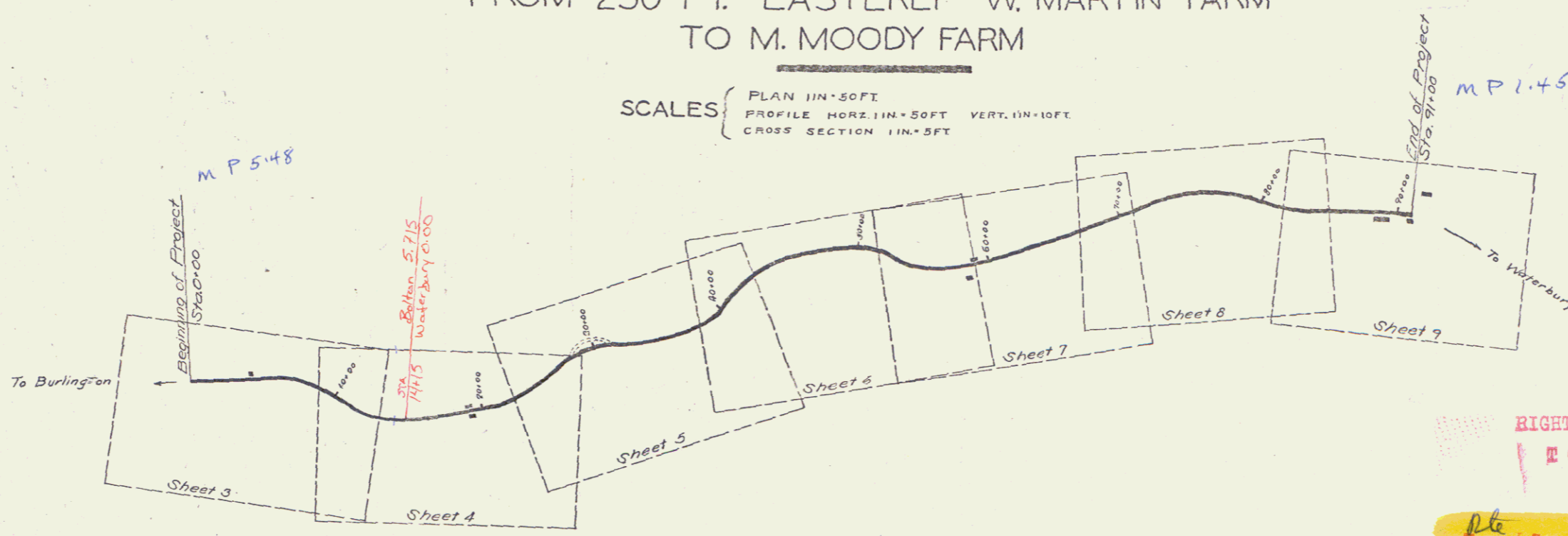
Plan # 99R081

TOWNS OF BOLTON-WATERBURY

BOLTON FALLS ROAD
FROM 250 FT. EASTERLY W. MARTIN FARM
TO M. MOODY FARM

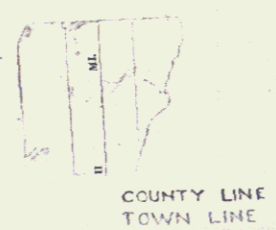


SCALES { PLAN 1 IN = 50 FT
PROFILE HORIZ. 1 IN = 50 FT VERT. 1 IN = 10 FT
CROSS SECTION 1 IN = 5 FT



LAYOUT 1 IN. = 500 FT.

RIGHT-OF-WAY DIVISION
TOWN FILE
PERPETUAL
Town of US2
(To Be Returned To R.O.W. DIVISION)



CONVENTIONAL SIGNS

100	Town of Bolton	Plan 99-A
101	Town of Bolton	1923 - Plan
102	Waterbury	1925 - Log
103	Bolton Falls Rd from 250 ft.	
104	Station W. Martin Farm to M. Moody Farm	

DEFLECTION ANGLE	Δ
DEGREE OF CURVE	D.
RADIUS OF CURVE	R.
TANGENT DISTANCE	T.
LENGTH OF CURVE	L.
EXTERNAL DISTANCE	E.
POINT OF INTERSECTION	P.I.
POINT OF CURVE	P.C.
POINT OF TANGENT	P.T.

1/23/24

Project NO. F 68A

DIST. # 5 PLANS

SERIES F HOGSFILE SHEET 1 OF 20

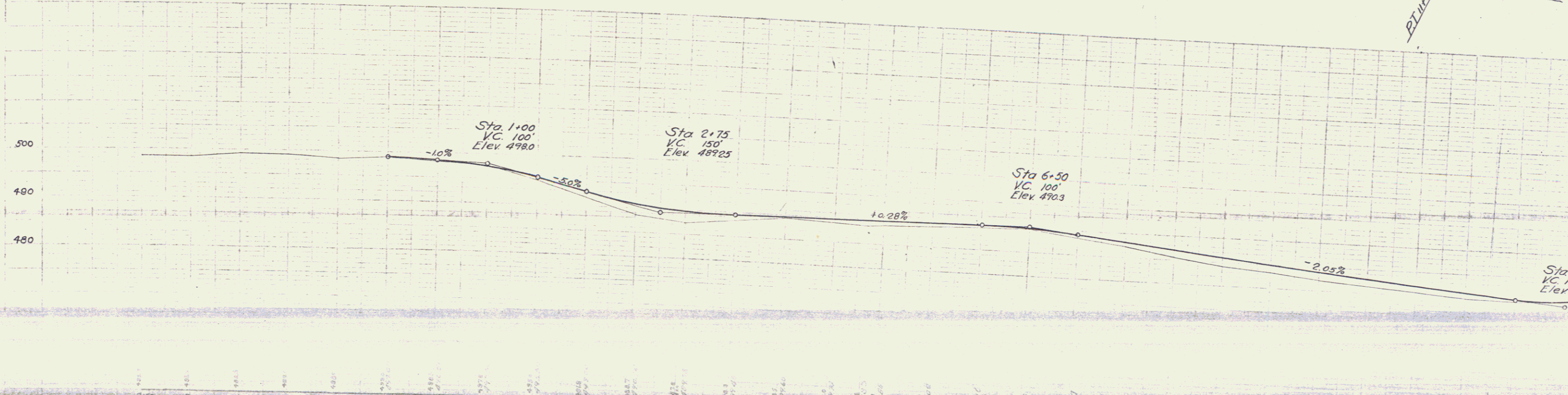
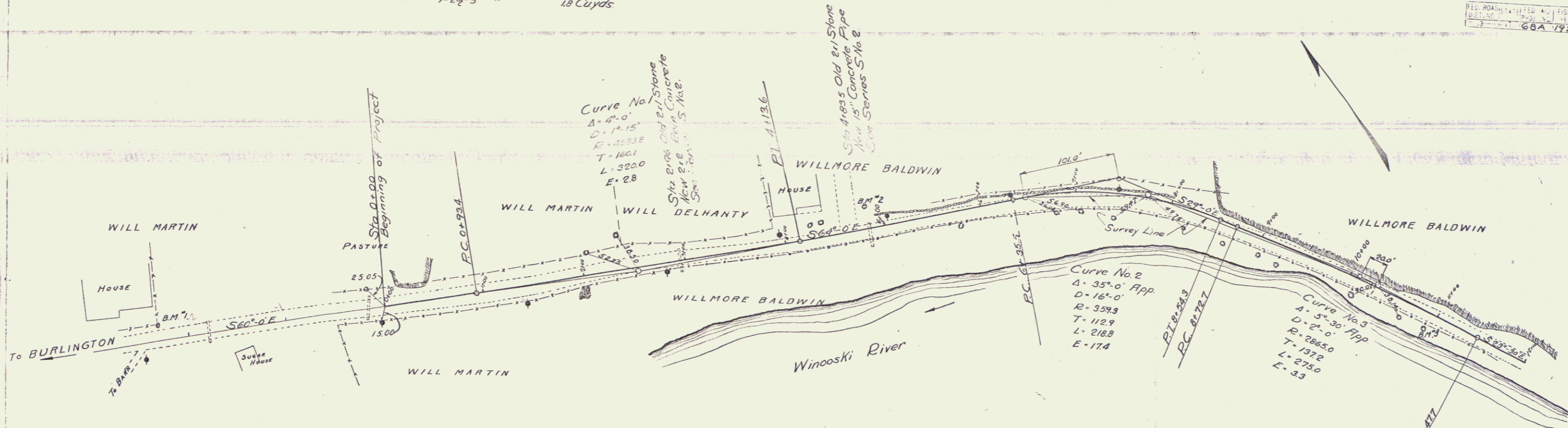
GUARD RAIL REQUIRED
 ON LEFT
 Sta 2+84 to Sta 3+08 Length 24ft
 " 4+72 " " 4+96 " 24"
 ON RIGHT
 Sta 2+38 to Sta 12+00 Length 962ft
 Total this sheet 1076ft

NEW CULVERTS REQUIRED
 Sta 2+96 2x2 Concrete
 1-2-4 " 62 Cuyds
 1-2-5 " 75 " "
 Rein Steel " 171 "
 Sta 4+835 15" Concrete Pipe 30 ft
 1-2-5 " 18 Cuyds

SUB-BASE REQUIRED
 Sta 5+00 to Sta 9+00 Length 400ft

Dry Stone Masonry
 Sta 10+75 to 11+36 - 40cu yd

REG. ROAD DIST. FILED AND FISCAL YEAR NO. SHEET NO. TOTAL SHEETS
 68A 1923 3 26



B.M. 1 Spike in 12" Maple Left Sta -2+31 Elev 500.0
 " 2 " " " " 4+83 " 493.35
 " 3 " " 14" Elm Right " 10+91 " 480.90

2

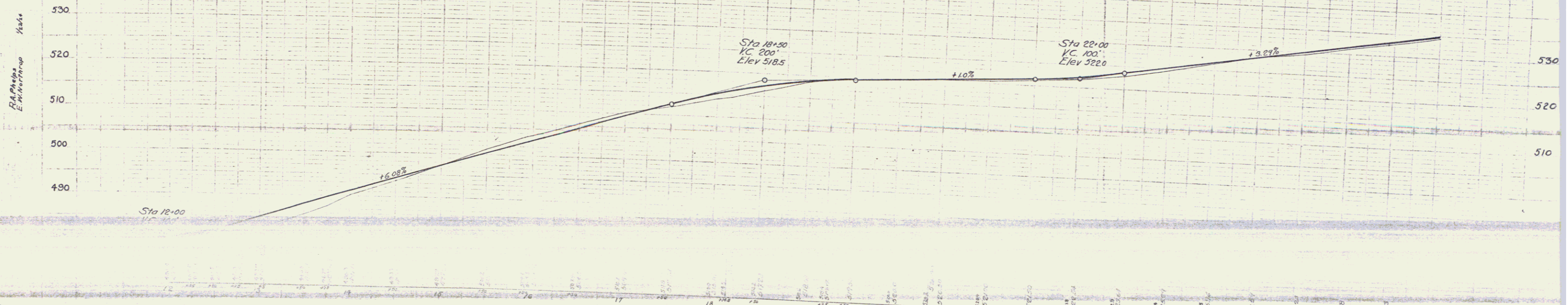
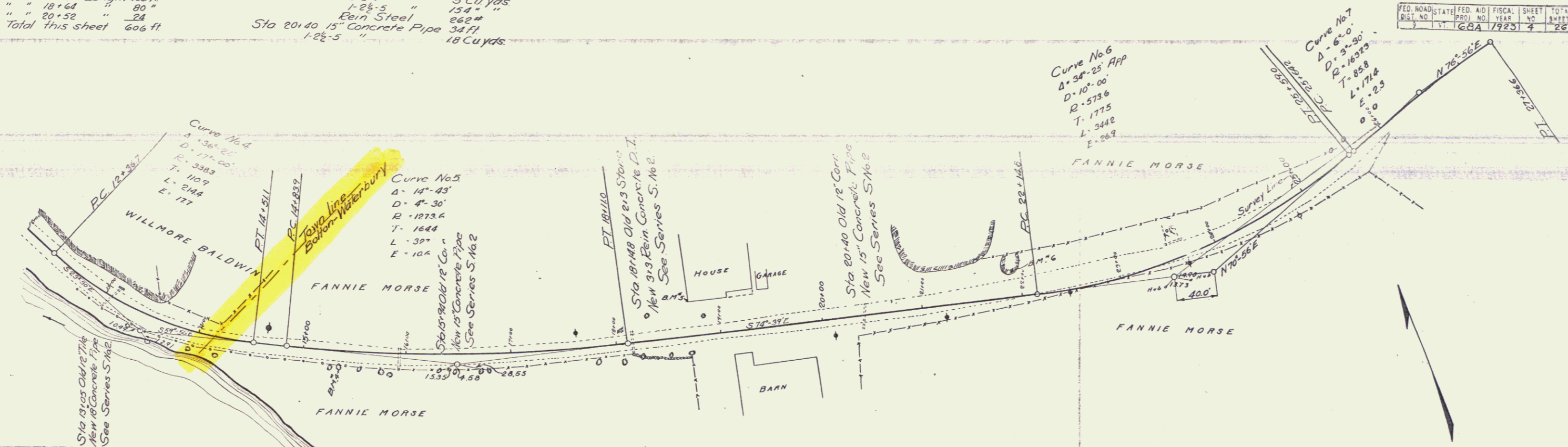
Guard Rail Required
 ON LEFT
 Sta 12+93 to Sta 13+17 Length 24 ft
 " 15+82 " " 16+06 " 24 "
 " 18+03 " " 18+27 " 24 "
 " 20+28 " " 20+52 " 24 "
 ON RIGHT
 Sta 12+00 to Sta 16+06 Length 406 ft
 " 17+84 " " 18+64 " 80 "
 " 20+28 " " 20+52 " 24 "
 Total this sheet 606 ft

New Culverts Required
 Sta 13+05 18" Concrete Pipe 30 ft
 1-2 1/2-5 " 23 Cuyds.
 Sta 15+94 15" Concrete Pipe 34 ft
 1-2 1/2-5 " 18 Cuyds.
 Sta 18+48 3-3 Rein Concrete with Drop Inlet
 1-2-4 " 5 Cuyds.
 Rein Steel 262#
 Sta 20+40 15" Concrete Pipe 34 ft
 1-2 1/2-5 " 18 Cuyds.

SUB-BASE REQUIRED
 Sta 21+00 to Sta 25+00 Length 400ft

Dry Stone Masonry
 Sta 13+70 to 14+70 - 56 cu yd.

FED. ROAD DIST. NO.	STATE	FED. AID FISCAL YEAR	SHEET NO.	TOTAL SHEETS
1	GA	1923	4	26

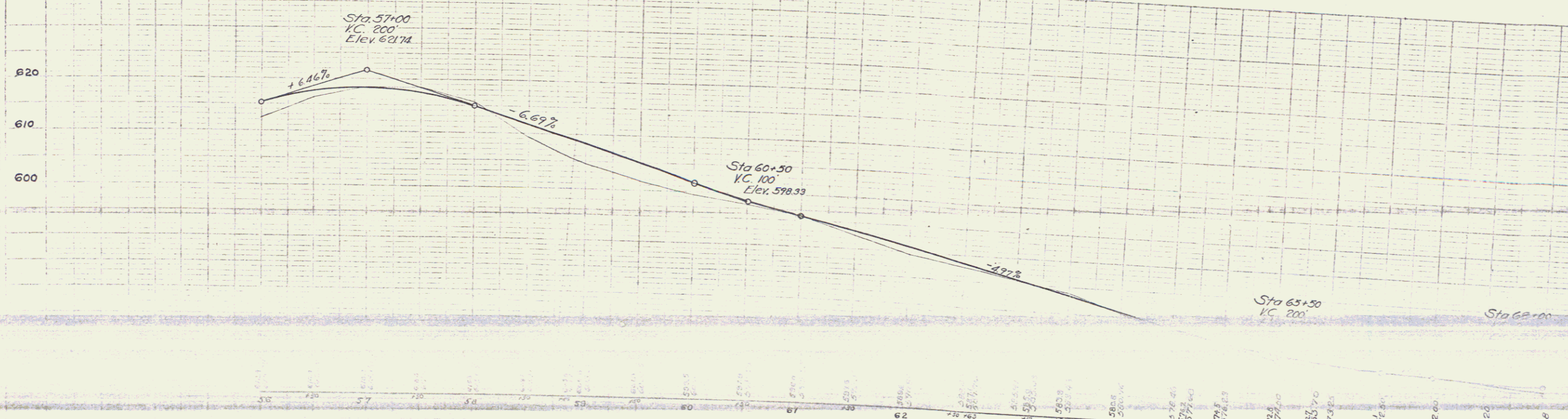
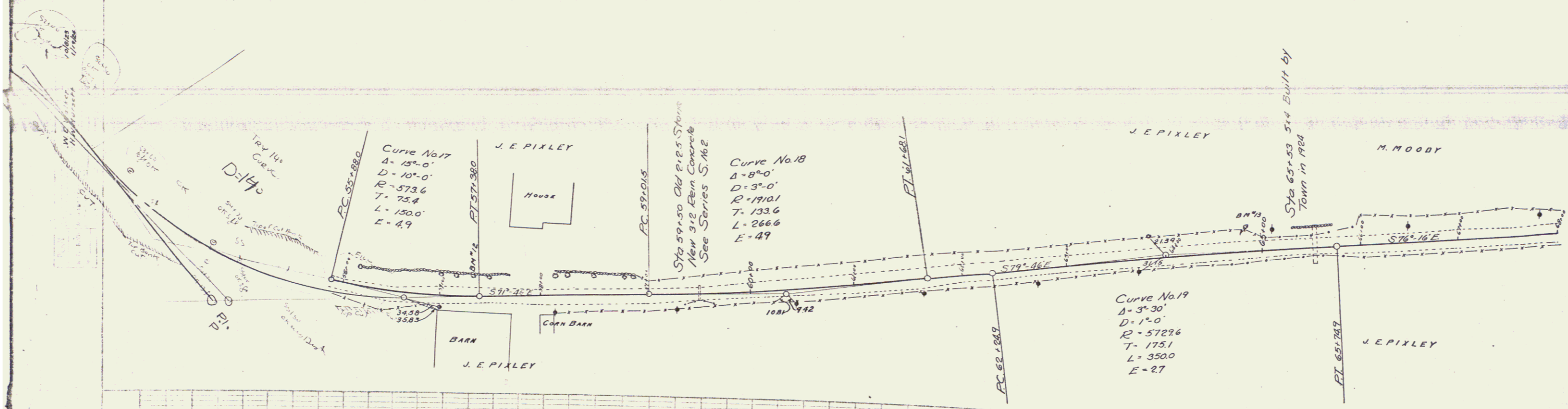


B.M. 4 Spike in 14" Oak Right Sta 15+35 Elev 500.0
 " 5 Btm Base Board N.W. of House Left Sta 16+72 Elev 521.80
 " 6 Boulder Left Sta. 21+90 Cannot be determined

GUARD RAIL REQUIRED
 ON LEFT
 Sta 59+38 to Sta 59+62 Length 24 ft
 ON RIGHT
 Sta 56+00 to Sta 56+64 Length 64 ft
 " 59+38 " 59+62 " 24 "
 Total this sheet 112 ft

NEW CULVERTS REQUIRED
 Sta 59+50 3x2 Rein. Concrete
 1-2'4" " 42 Cuyds
 1-2'4" " 77 " "
 Rein Steel 216"

PER. NO.	DATE	PROJ. NO.	FISCAL YEAR	SHEET NO.	TOTAL SHEETS
68A	1923	7	26		



B.M. 12 Spike in 16" Elm Left Sta 57+32 Elev 620.21
 " 13 " " 14 " " 65+84 " 576.74

Series F
 Sheet 6

GUARD RAIL REQUIRED

Location	Length
Sta 72+88 to Sta 73+12	24ft
Sta 75+00 " " 75+16	16 "
Sta 76+24 " " 76+40	16 "
Sta 81+36 " " 81+60	24 "
ON RIGHT	
Sta 71+50 to Sta 73+10	20ft
Sta 76+00 " " 76+16	16 "
Sta 76+24 " " 76+40	16 "
Sta 79+85 " " 83+13	328 "
Total this sheet	680ft

NEW CULVERTS REQUIRED

Sta 73+00	15" Concrete Pipe	40ft
		18 Cuyds
Sta 81+48	15" Concrete Pipe	48ft
		18 Cuyds

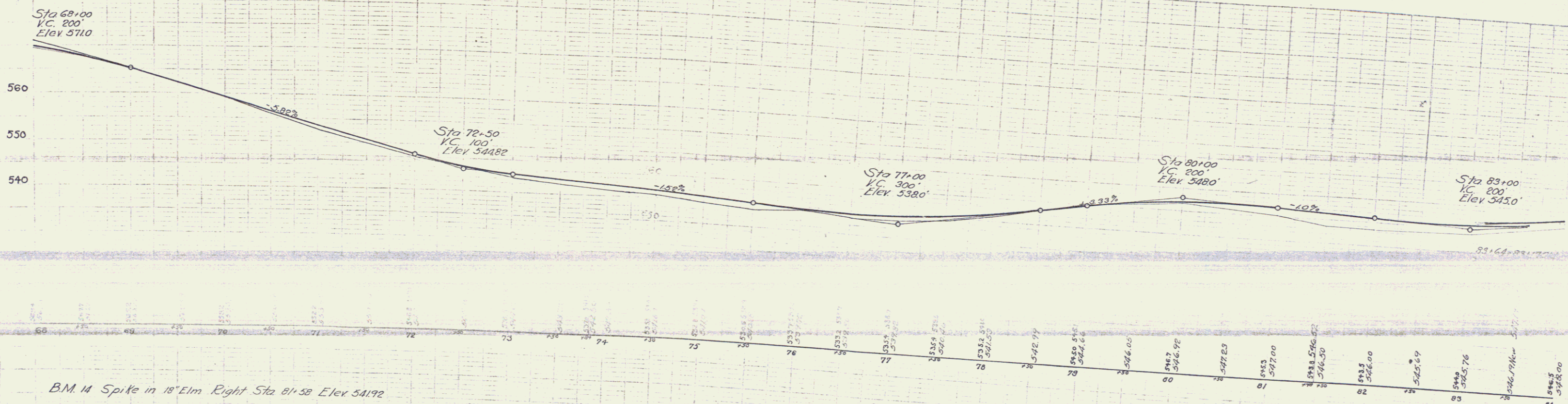
SUB-BASE REQUIRED

Sta 75+55 to Sta 80+50	Length	200ft
Sta 83+25 " " 84+00	Length	50ft
Total this sheet		300ft

BRIDGE AT STA 76+20

Earth etc	60 Cuyds
1-2-4 Concrete	102 "
1-2-5 Concrete	750 "
Rein Steel	1005#

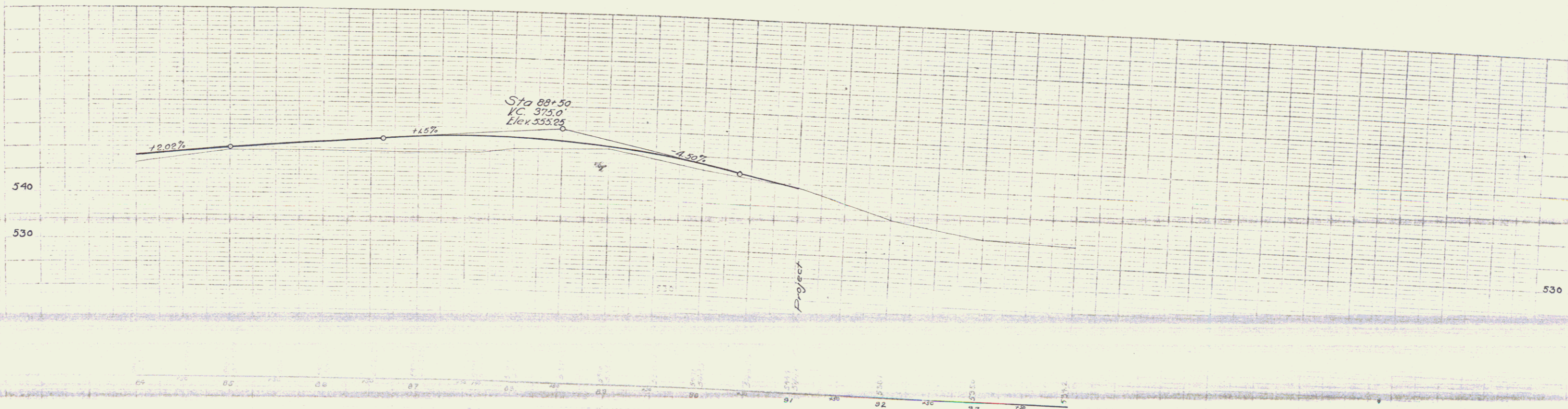
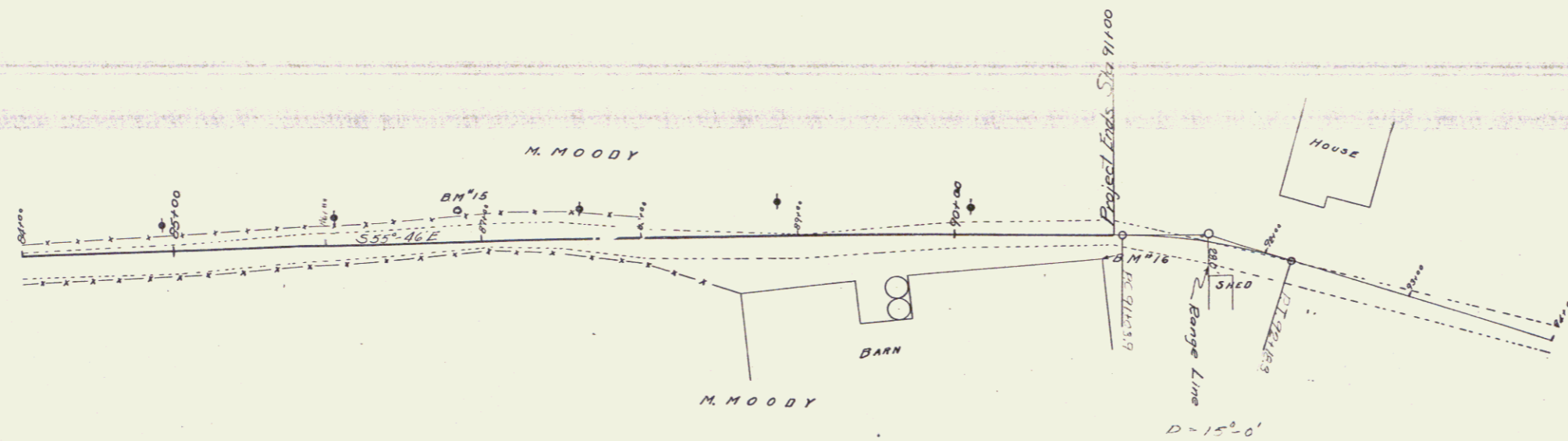
FED. ROAD STATE FED. AD. FISCAL SHEET
 DIST. NO. 2001 1923
 68A 1923 6



GUARD RAIL REQUIRED
ON RIGHT
Sta 85+60 to Sta 87+84 Length 224 ft

SUB-BASE REQUIRED
Sta 84+00 to Sta 86+50 Length 250 ft
" 88+00 " 91+00 " 300 "
Total this sheet 550 ft

FED. ROAD DIST.	STATE	FED. AID	FISCAL YEAR	SHEET NO.	TOTAL SHEETS
3	VT	68A	1928	9	26



B.M. 15 Spite in 10' Elm Left Sta 86+85 Elev 551.43
" 16 Foundation Cr Barn Right Sta 91+00 " 546.87