

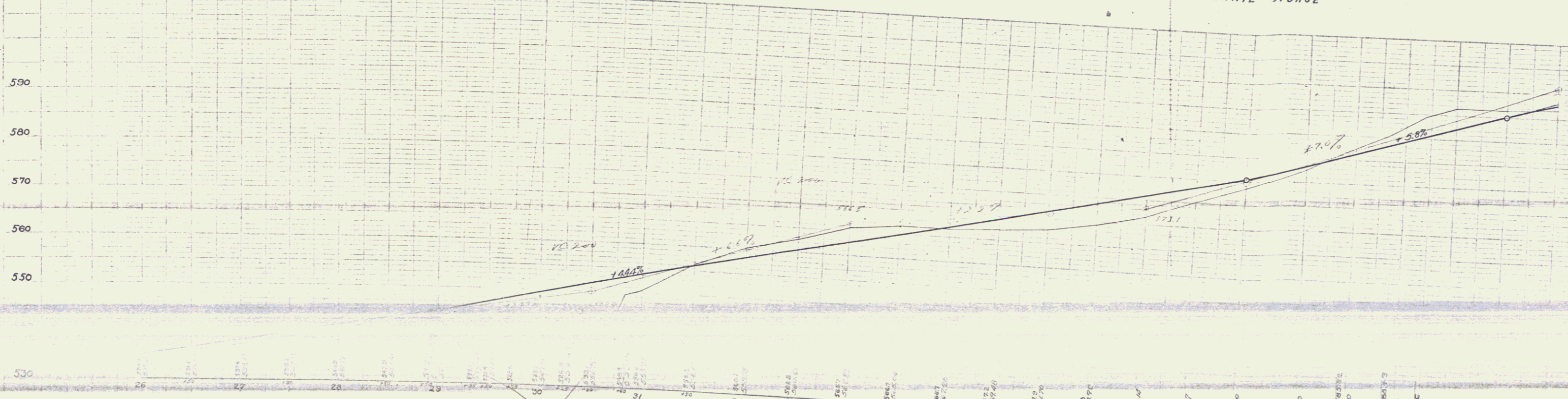
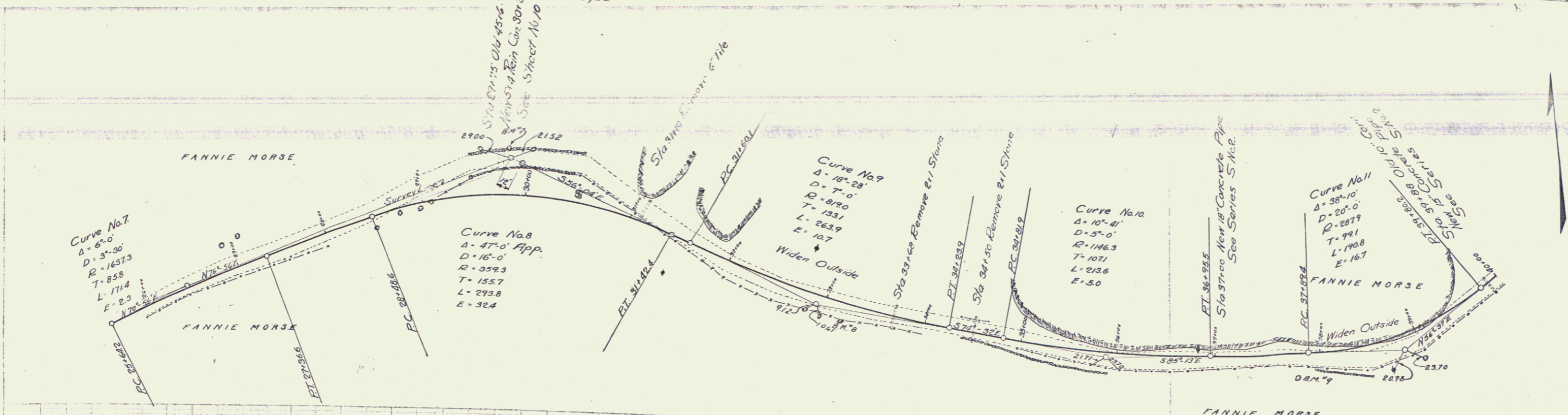
GUARD RAIL REQUIRED
 ON LEFT
 Sta 29.16 to Sta 30.54 Length 138ft
 " 36.88 " " 37.12 " 24"
 " 39.76 " " 40.00 " 24"
 ON RIGHT
 Sta 26.20 to Sta 27.24 Length 104ft
 " 27.16 " " 31.64 " 243"
 " 33.74 " " 40.00 " 626"
 Total this sheet 1194ft

NEW CULVERTS REQUIRED
 Sta 30+25 5x4 Rein Concrete 20 Cuyds.
 1-2'-4" Concrete 35"
 Rein Steel 1800 lbs.
 Sta 37+00 18" Concrete Pipe 30ft
 1-2'-5" " " 23 Cuyds
 Sta 39+82 15" " " 34 ft
 1-2'-5" " " 1.8 Cuyds

SUB-BASE REQUIRED
 Sta 31+00 to Sta 34+50 Length 350ft
 Sta 37+00 to Sta 40+00 " 300"
 Total this sheet 650ft

Dry Stone Masonry
 Sta 26+25 to 27+15 = 201 cu yd.
 36+90 - 37+60 = 14 cu yd.
 215 Total

FILED	STATE	FED. AID	FISCAL YEAR	SHEET NO.
68A	1923	5	1	5



B.M. 7 Spike in 6" Yellow Birch Left Sta 30+00 Elev 547.70
 " 8 " " 10" Maple Right " 33+20 " 567.54
 " 9 " " 18 Oak " " 37+78 " 584.66

Series F No. 68A Filed Sheet 5 of 28