

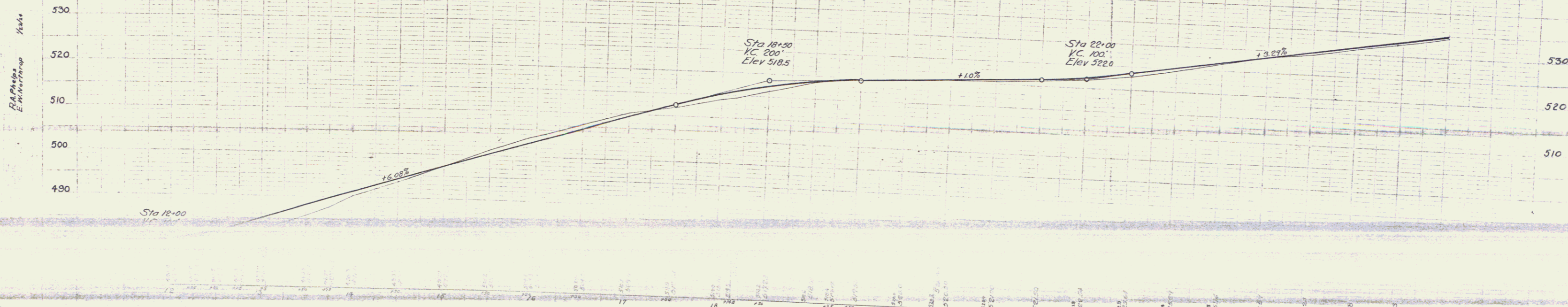
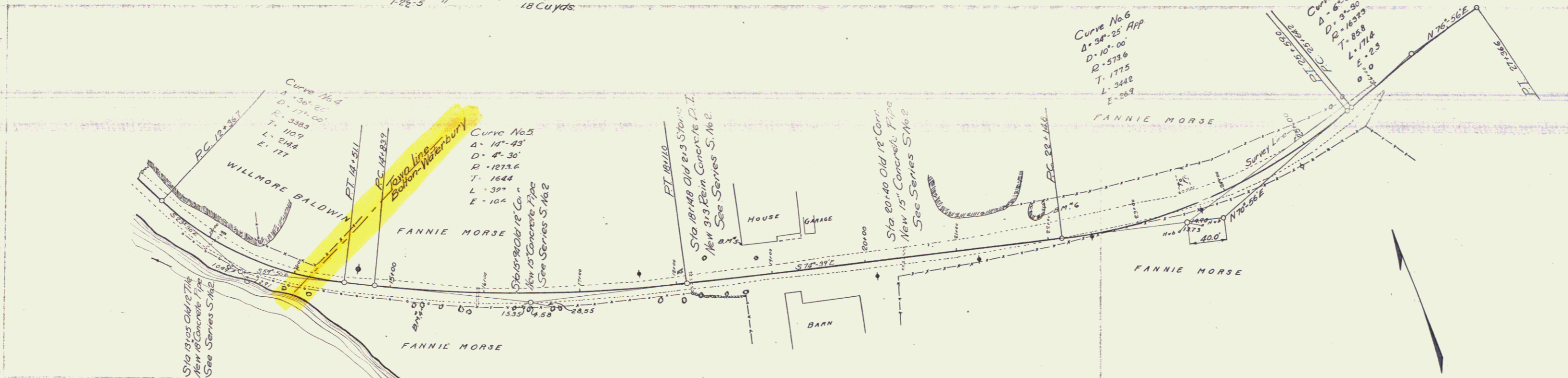
**Guard Rail Required**  
 ON LEFT  
 Sta 12+93 to Sta 13+17 Length 24 ft  
 " 15+82 " " 16+06 " 24 "  
 " 18+03 " " 18+27 " 24 "  
 " 20+28 " " 20+52 " 24 "  
 ON RIGHT  
 Sta 12+00 to Sta 16+06 Length 406 ft  
 " 17+84 " " 18+64 " 80 "  
 " 20+28 " " 20+52 " 24 "  
 Total this sheet 606 ft

**New Culverts Required**  
 Sta 13+05 18" Concrete Pipe 30 ft  
 1-2 1/2-5 " 23 Cuyds.  
 Sta 15+94 15" Concrete Pipe 34 ft  
 1-2 1/2-5 " 18 Cuyds.  
 Sta 18+48 3-3 Rein Concrete with Drop Inlet  
 1-2-4 " 5 Cuyds.  
 Rein Steel 262#  
 Sta 20+40 15" Concrete Pipe 34 ft  
 1-2 1/2-5 " 18 Cuyds.

**SUB-BASE REQUIRED**  
 Sta 21+00 to Sta 25+00 Length 400ft

**Dry Stone Masonry**  
 Sta 13+70 to 14+70 - 56 cu yd.

FED. ROAD DIST. NO.	STATE	FED. AID FISCAL YEAR	SHEET NO.	TOTAL SHEETS
1	GA	1923	4	26



B.M. 4 Spike in 14" Oak Right Sta 15+35 Elev 500.0  
 " 5 Btm Base Board NW of House Left Sta 16+72 Elev 521.80  
 " 6 Boulder Left Sta 21+90 Cannot be determined