

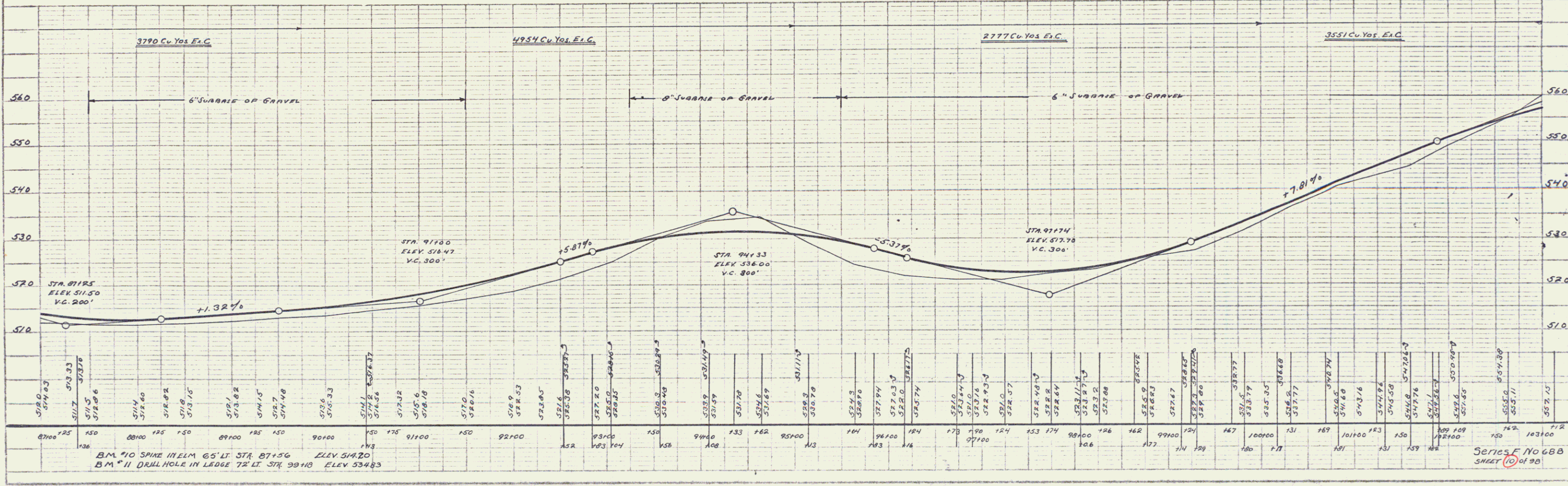
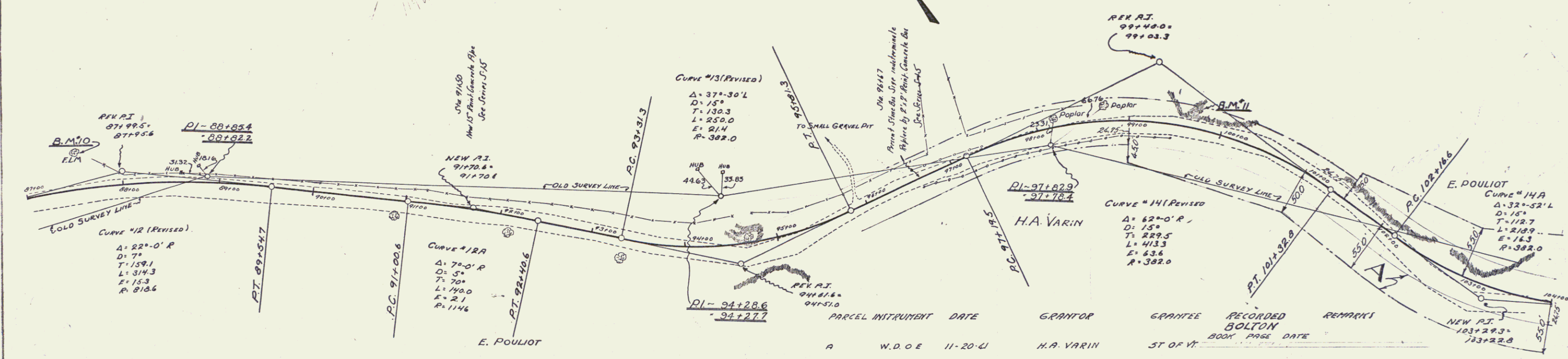
WOOD GUARD RAIL REQUIRED LEFT STA 91+38 TO 91+62 LENGTH 24 FT. TOTAL THIS SHEET 24 FT.

CABLE GUARD RAIL REQUIRED RIGHT STA 91+38 TO 93+78 LENGTH 240 FT. STA 95+00 TO 101+00 " 720 "

NEW CULVERTS REQUIRED STA 91+50 15" REIN. CONCRETE PIPE LENGTH 32 FT. CONCRETE CLASS B (1-2 1/2 S) 2.1 Cu. Yds. REINFORCING STEEL 33 Lbs. STA 91+67 2'x2' REIN. CONCRETE BOX CONCRETE CLASS A (1-2-4) 15.1 Cu. Yds. REINFORCING STEEL 995 Lbs.

SUBGRADE OF GRAVEL REQUIRED 6" SUBGRADE STA 97+50 TO 91+50 LENGTH 480 FT. " " 95+50 TO 103+00 " 750 " " " 93+25 TO 95+50 " 225 "

NO.	DATE	BY	REVISION
1	11-20-61	W.D.O.E.	PREPARED
2	11-20-61	H.A. VARIN	RECORDED



PLAN
 DATE
 BY
 CHECKED
 APPROVED

PROFILE
 DATE
 BY
 CHECKED
 APPROVED

BM #10 SPIKE IN ELM 65' LT. STA 87+56 ELEV. 514.20
 BM #11 DRILL HOLE IN LEDGE 72' LT. STA 99+10 ELEV. 534.83

Series No 688
 SHEET 10 of 98