

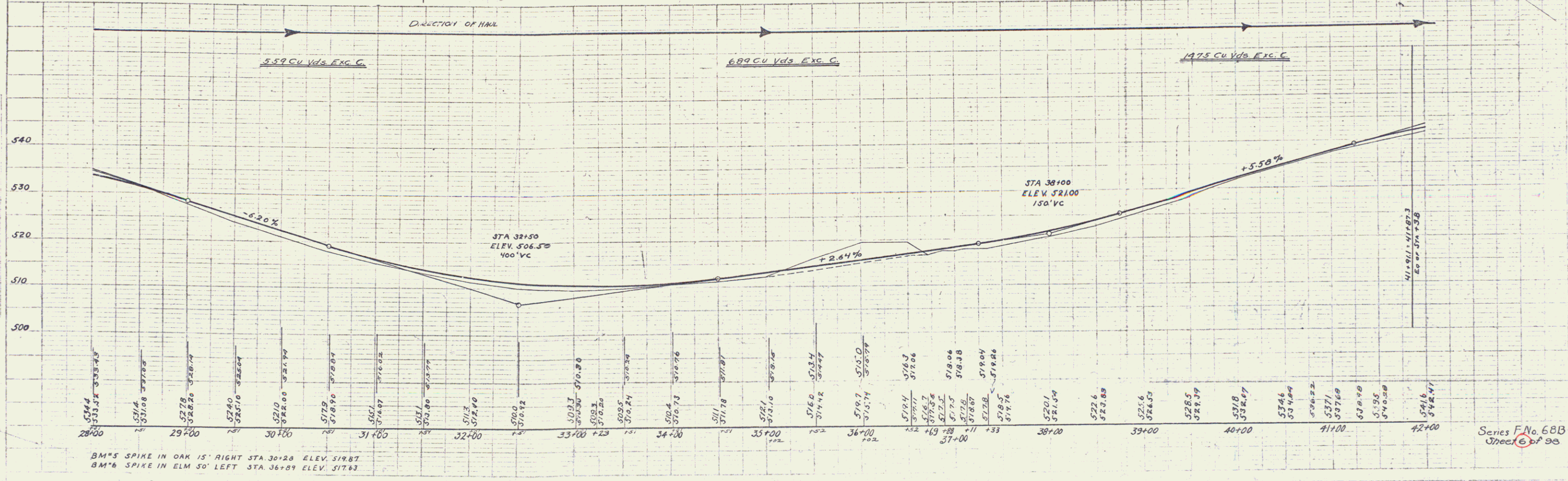
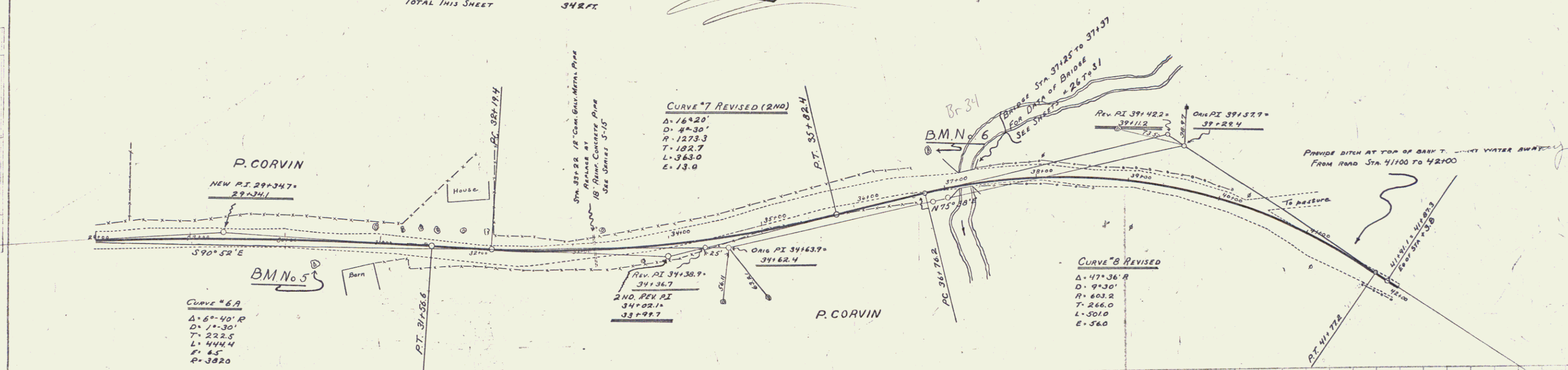
WOOD GUARD RAIL REQUIRED
 RIGHT
 STA. 28+00 TO 28+14 LENGTH 14 FT.
 STA. 33+10 TO 33+34 LENGTH 24 FT.
 STA. 36+80 TO 37+12 " 32 FT.
 LEFT
 STA. 28+00 TO 28+14 LENGTH 14 FT.
 STA. 33+10 TO 33+34 " 24 FT.
 STA. 36+80 TO 37+14 " 34 FT.
 TOTAL THIS SHEET 124 FT.

CABLE GUARD RAIL REQUIRED
 RIGHT
 STA. 37+36 TO 38+80 LENGTH 144 FT.
 STA. 41+70 TO 42+00 " 30 FT.
 LEFT
 STA. 37+38 TO 39+06 LENGTH 168 FT.
 TOTAL THIS SHEET 342 FT.

NEW CULVERTS REQUIRED
 STA. 33+22 18" REIN. CONCRETE PIPE LENGTH 32 FT.
 CONCRETE CLASS B (1-2 1/2-5) 2.7 CY.
 REINFORCING STEEL 33 LB.

FED. ROAD DIST. NO.	STATE	FED. AID PROJ. NO.	FISCAL YEAR	SHEET NO.	TOTAL SHEETS
9	VT	688	1927	4	88

PLANS
 AA, DOE
 AA, ODE



BM #5 SPIKE IN OAK 15' RIGHT STA. 30+20 ELEV. 519.87
 BM #6 SPIKE IN ELM 30' LEFT STA. 36+89 ELEV. 517.63

Series F No. 68B
 Sheet 6 of 98

5