

**WOOD GUARD RAIL REQUIRED**  
 LEFT STA. 6788 TO 7112 LENGTH 24FT.  
 " 12148 TO 12172 " 24FT.  
 TOTAL THIS SHEET 48FT.

**CABLE GUARD RAIL REQUIRED**  
 RIGHT STA. 6788 TO 14100 LENGTH 712FT.  
 LEFT STA. 10140 TO 14100 LENGTH 360FT.  
 TOTAL THIS SHEET 1072FT.

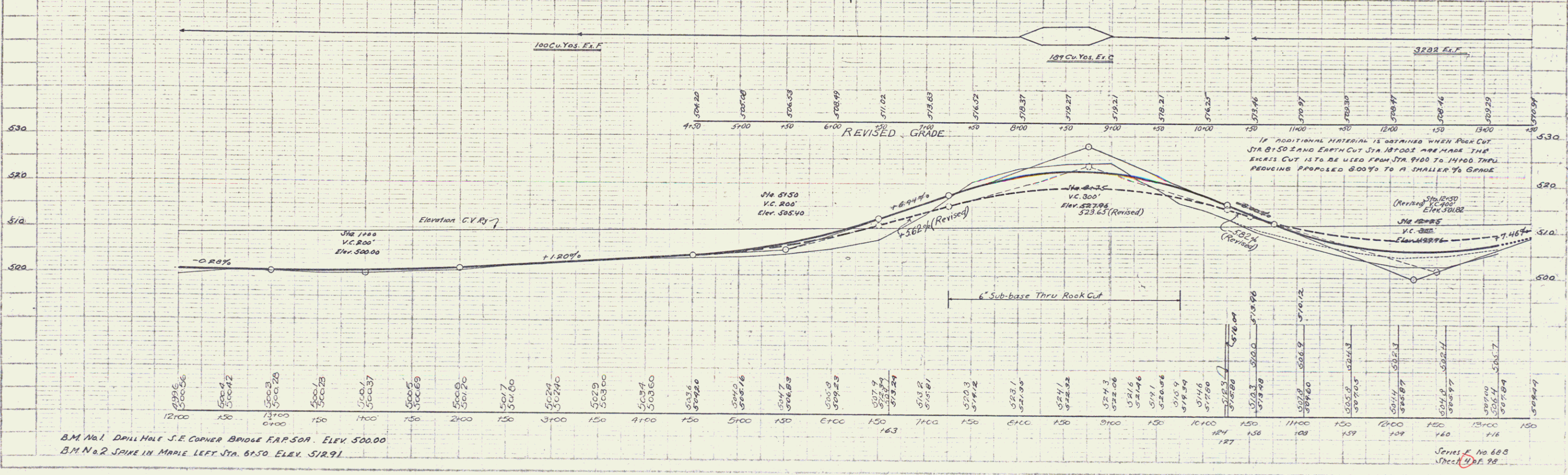
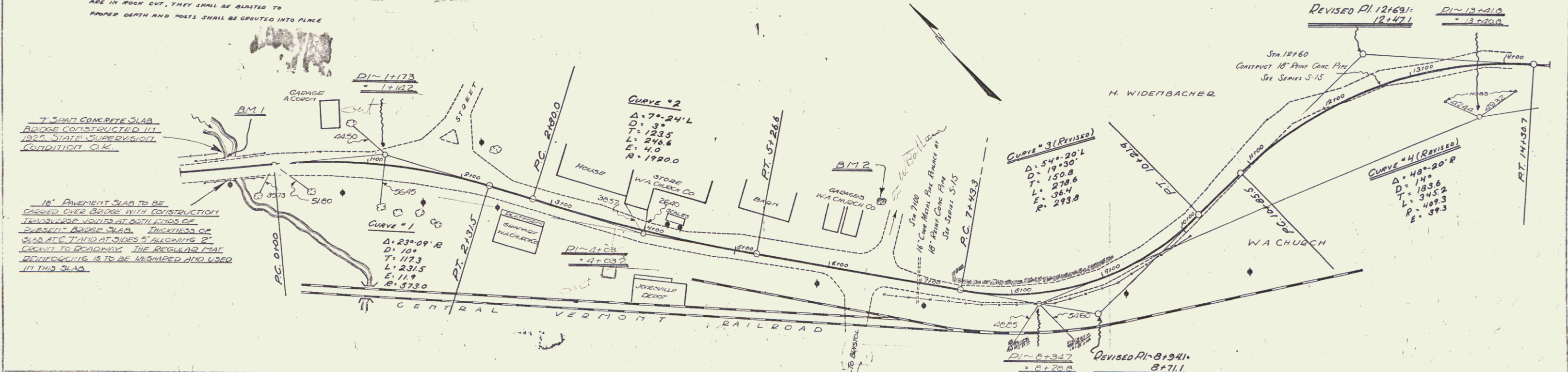
**NEW CULVERTS REQUIRED**  
 STA. 7100 18" REINFORCED CONCRETE PIPE LENGTH 52FT.  
 CLASS A(1-2-4) CONCRETE 12 Cu. Yds.  
 B(1-2-3) " 1.6 " "  
 REINFORCING STEEL 47 Lbs.  
 STA. 12160 18" REINFORCED CONCRETE PIPE LENGTH 36FT.  
 CLASS A(1-2-4) CONCRETE 19 Cu. Yds.  
 REINFORCING STEEL 60 Lbs.

**SUBBASE OF GRAVEL REQUIRED**  
 STA. 7125 TO 9175 6" SUBBASE THRU ROCK CUT LENGTH 250FT.

NOTE: - WHERE HOLES FOR GUARD RAIL POSTS ARE IN ROCK CUT, THEY SHALL BE BLASTED TO PROPER DEPTH AND POSTS SHALL BE CRUETED INTO PLACE

7" SPAN CONCRETE SLAB BRIDGE CONSTRUCTED IN 1927 STATE SUPERVISION CONDITION O.K.

10" PAVEMENT SLAB TO BE LAYED OVER BRIDGE WITH CONSTRUCTION TRANSVERSE JOINTS AT BOTH ENDS OF EXISTING BRIDGE SLAB. THICKNESS OF SLAB AT CROWN AT 5% SLOPING 2" DOWN TO ROADWAY. THE REGULAR MAINTENANCE IS TO BE DESIGNED AND USED IN THIS SLAB.



B.M. No. 1 Drill Hole S.E. Corner Bridge F.P. 504. Elev. 512.91  
 B.M. No. 2 Spike in Maple Left Sta. 6150 Elev. 512.91