

WOOD GUARD RAIL REQUIRED

Station	Left	Right
70+00	24	24
73+00	-	24

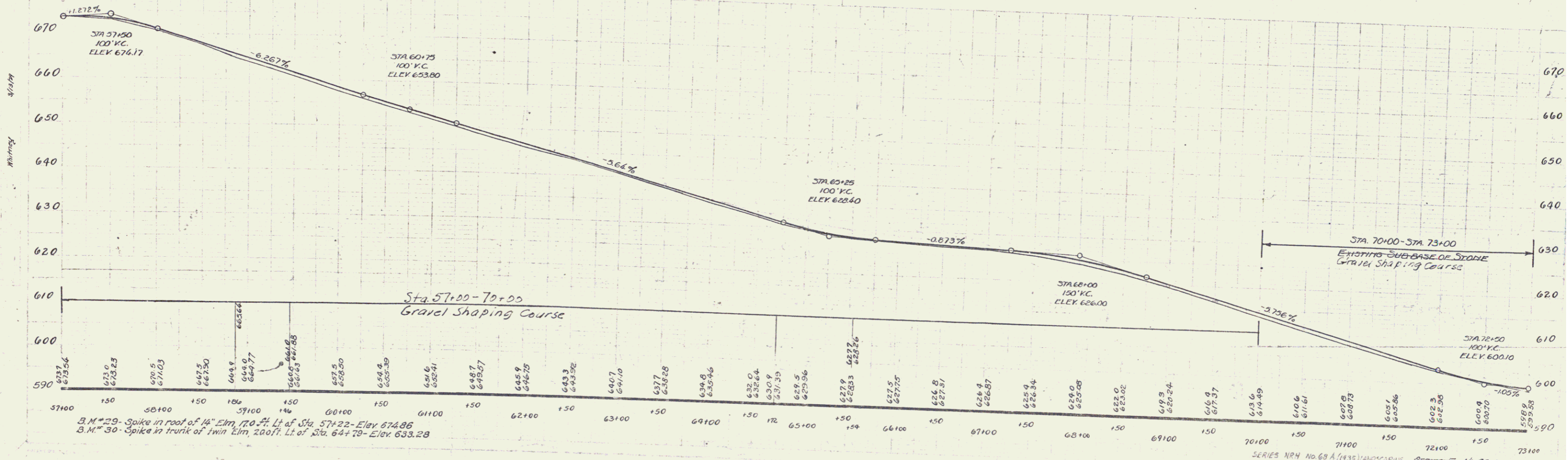
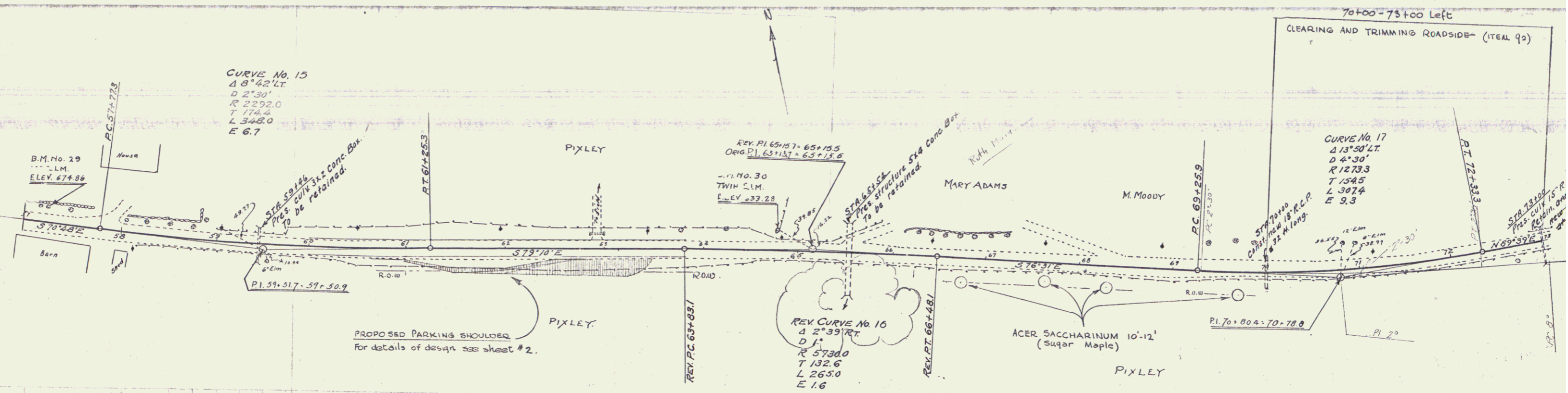
NEW REINF CONC PIPE CULVERTS REQUIRED
 Station Diam. Leng. Conc. Steel
 70+00 18" 32' 31"

CULVERT REPAIRS REQUIRED
 Station Size Conc. Steel
 65+00 18" 17'

Bleeders Required

Sta.	Side	Width	Length	sq
59+30	LT	4'	4'	16
65+40	RT	4'	4'	16

FED. ROAD DIST. NO. STATE NRH
 68-A 1935 G
 (1935)
 LANDSCAPING



B.M. No. 29 - Spike in roof of 14" Elm, 170 ft. Lt. of Sta. 57+22 - Elev. 674.86
 B.M. No. 30 - Spike in trunk of Twin Elm, 200 ft. Lt. of Sta. 64+78 - Elev. 633.28

SERIES NRH No. 68-A (1935) LANDSCAPING
 SERIES F-AL-68-C
 SHEET 8 OF 11