

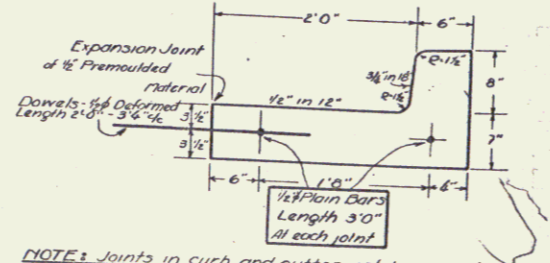
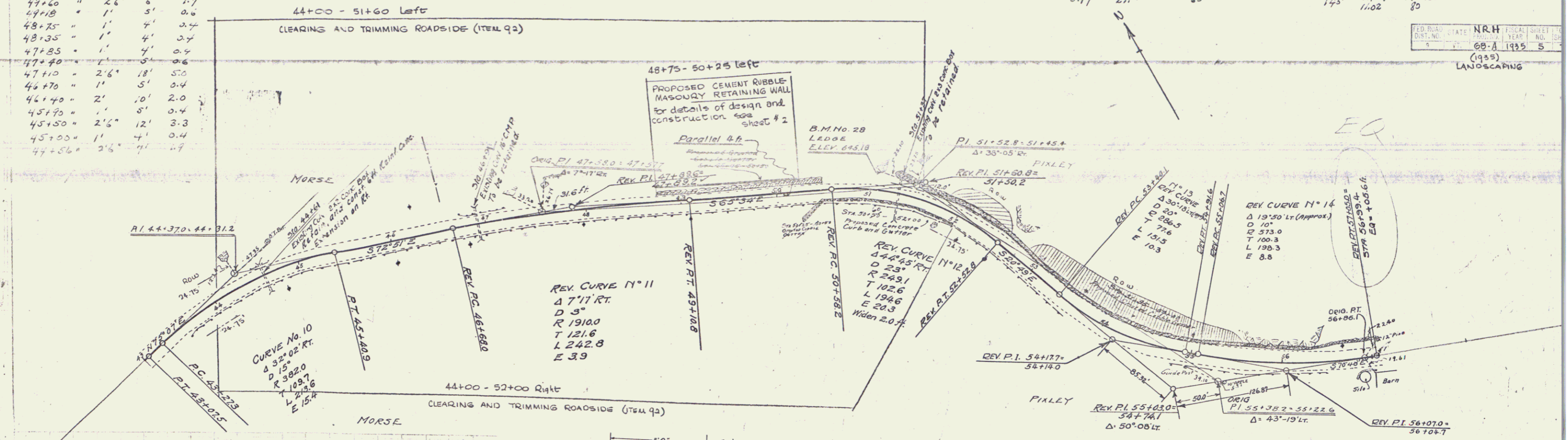
Station	Width	Length	Sq. Ft.
44+00 - 44+50 RT	3'	50'	150
44+50 - 44+60	3'6"	10'	36
44+60 - 44+70	2'6"	10'	26
44+70 - 44+80	1'	10'	10
44+80 - 44+90	1'	10'	10
44+90 - 45+00	1'	10'	10
45+00 - 45+10	2'6"	10'	26
45+10 - 45+20	1'	10'	10
45+20 - 45+30	1'	10'	10
45+30 - 45+40	1'	10'	10
45+40 - 45+50	1'	10'	10
45+50 - 45+60	2'6"	10'	26
45+60 - 45+70	1'	10'	10
45+70 - 45+80	1'	10'	10
45+80 - 45+90	1'	10'	10
45+90 - 46+00	1'	10'	10
46+00 - 46+10	2'6"	10'	26
46+10 - 46+20	1'	10'	10
46+20 - 46+30	1'	10'	10
46+30 - 46+40	1'	10'	10
46+40 - 46+50	1'	10'	10
46+50 - 46+60	1'	10'	10
46+60 - 46+70	1'	10'	10
46+70 - 46+80	1'	10'	10
46+80 - 46+90	1'	10'	10
46+90 - 47+00	1'	10'	10
47+00 - 47+10	2'6"	10'	26
47+10 - 47+20	1'	10'	10
47+20 - 47+30	1'	10'	10
47+30 - 47+40	1'	10'	10
47+40 - 47+50	1'	10'	10
47+50 - 47+60	1'	10'	10
47+60 - 47+70	1'	10'	10
47+70 - 47+80	1'	10'	10
47+80 - 47+90	1'	10'	10
47+90 - 48+00	1'	10'	10
48+00 - 48+10	2'6"	10'	26
48+10 - 48+20	1'	10'	10
48+20 - 48+30	1'	10'	10
48+30 - 48+40	1'	10'	10
48+40 - 48+50	1'	10'	10
48+50 - 48+60	1'	10'	10
48+60 - 48+70	1'	10'	10
48+70 - 48+80	1'	10'	10
48+80 - 48+90	1'	10'	10
48+90 - 49+00	1'	10'	10
49+00 - 49+10	2'6"	10'	26
49+10 - 49+20	1'	10'	10
49+20 - 49+30	1'	10'	10
49+30 - 49+40	1'	10'	10
49+40 - 49+50	1'	10'	10
49+50 - 49+60	1'	10'	10
49+60 - 49+70	1'	10'	10
49+70 - 49+80	1'	10'	10
49+80 - 49+90	1'	10'	10
49+90 - 50+00	1'	10'	10
50+00 - 50+10	2'6"	10'	26
50+10 - 50+20	1'	10'	10
50+20 - 50+30	1'	10'	10
50+30 - 50+40	1'	10'	10
50+40 - 50+50	1'	10'	10
50+50 - 50+60	1'	10'	10
50+60 - 50+70	1'	10'	10
50+70 - 50+80	1'	10'	10
50+80 - 50+90	1'	10'	10
50+90 - 51+00	1'	10'	10

Grouted Cobble Gutter (Reg'd.)
 Section - L x W x H - Area - Weight
 48-75 - 50+25 L 10' x 18" x 18" 180
 51+35 - 52+00 L 65' x 18" x 18" 1170
 50+25 - 50+50 R 25' x 18" x 18" 450

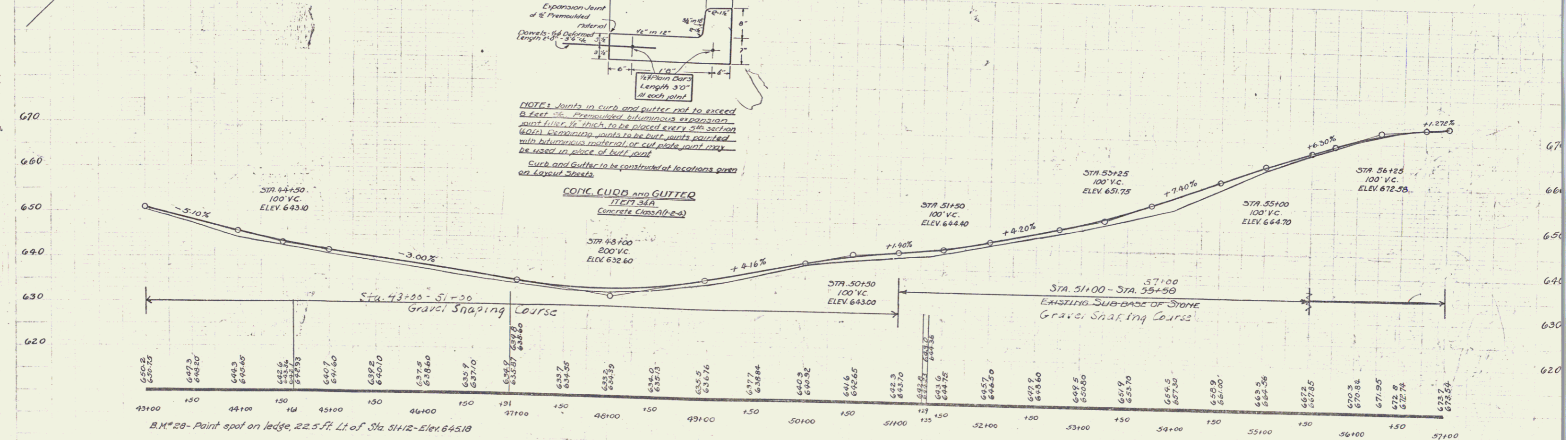
CULVERT REPAIRS REQUIRED
 STA 51+00 - 51+50
 CONC. # 1 STEEL # 4
 11.5' x 2.1' x 2.1'

CONC. CURB & GUTTER REQUIRED
 STA 50+25 - 52+00 R 25' x 18" x 18" 450
 CONC. # 1 STEEL # 4
 11.5' x 2.1' x 2.1'

FED. ROAD STATE NRH LOCAL SHEET NO.
 DIST. NO. 1935 5
 (1935)
 LANDSCAPING



NOTE: Joints in curb and gutter not to exceed 1/2" in height. Premolded bituminous expansion joint filler 1/2" thick to be placed every 5th section (60"). Expansion joints to be cut & joints painted with bituminous material or cut plate joint may be used in place of built joint.
 Curb and gutter to be constructed at locations given on Layout Sheets.



B.M. # 28 - Paint spot on ledge, 22.5 ft. Lt. of Sta. 51+12 - Elev. 645.18

SERIES NRH NO. 08 A (1935) LANDSCAPING
 SERIES F - No. 60-C
 SHEET 7 OF 11

5