

REINFORCED CONCRETE BOX CULVERT REPAIRS REQUIRED

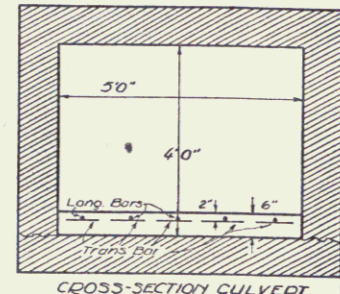
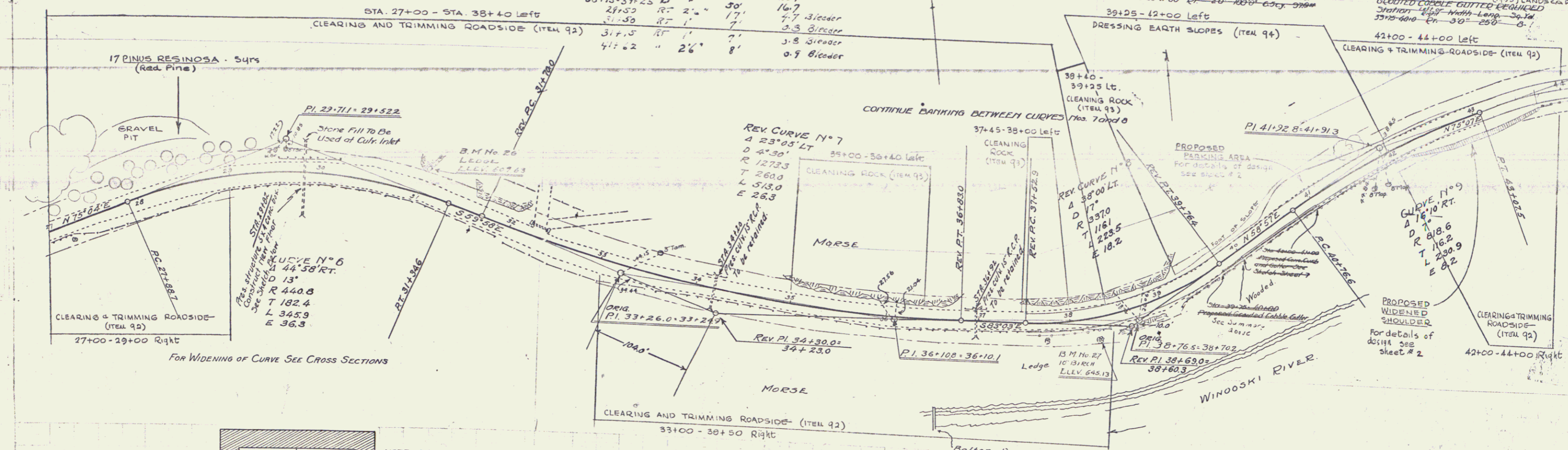
Station	Size	Length	Concrete Class	Steel
29+00	3'x4'	17' Floor	41 cu. yds.	650#

Grouted Culvert Repair Required

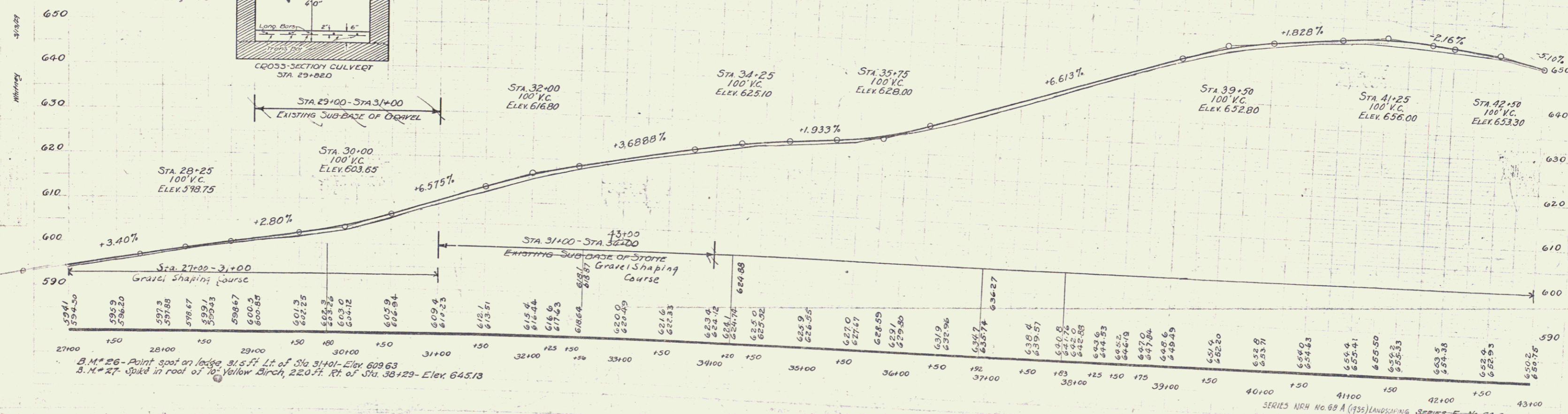
Station	Size	Length	Notes
70+28	4'x2'	30'	21.3
21+50	3'x2.5'	72'	23.7
38+75	3'x2.5'	50'	16.7
28+50	RT 1'	17'	4.7 Bleeder
31+50	RT 1'	17'	3.3 Bleeder
41+62	" 2'x6"	8'	0.9 Bleeder

CONCRETE CURB AND GUTTER REQUIRED
 Station 38+00 - 39+25
 20'x10'x10' - Class A
 2000-4000 cu. ft.

GROUTED CONCRETE GUTTER REQUIRED
 Station 42+00 - 44+00
 3'x12'x10' - Class A
 3300-4000 cu. ft.



NOTE: DRAINAGE IS TO BE DIVERTED FROM CULVERT FLOOR IN ORDER THAT CONCRETE MAY BE PLACED UNDER DRY CONDITIONS.



B.M. # 26 - Point spot on ledge, 31.5 ft Lt. of Sta 31+00 - Elev 628.63
 B.M. # 27 - Spot in roof of 10" Yellow Birch, 22.0 ft. Rt. of Sta. 38+29 - Elev. 645.13