

INDEX OF SHEETS

SHEET NO. 1 TITLE PAGE

- 2 TYPICAL CROSS-SECTION OF IMPROVEMENT

- 3 PLAN AND PROFILE STA. 0+00 TO STA. 8+67

- 4 OF REINFORCED BOX CULVERT STA. 6+88

- 5, 6 CROSS SECTIONS

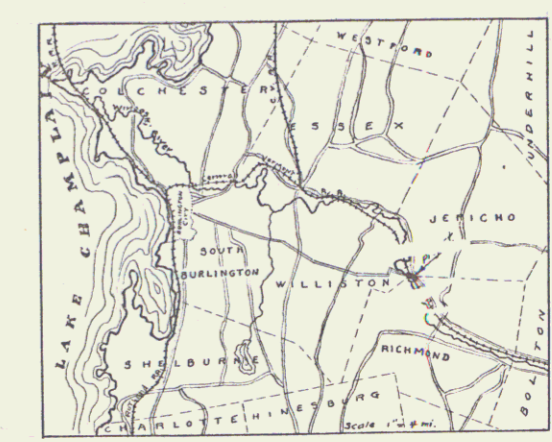
FED. ROAD DIST. NO.	STATE	FED. AID PROJ. NO.	YEAR	SHEET NO.	TOTAL SHEETS
9	Vt.	43		1	6

STATE OF VERMONT
STATE HIGHWAY DEPARTMENT

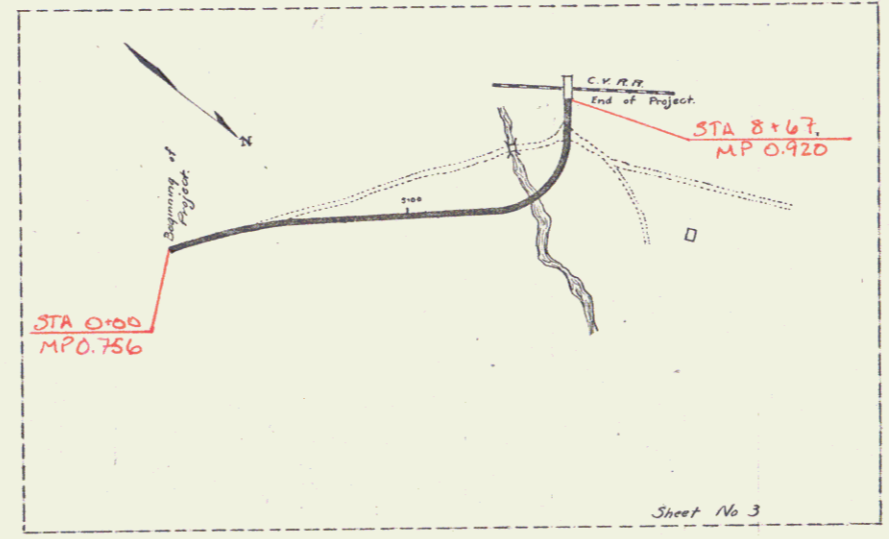
PLAN AND PROFILE OF PROPOSED
STATE HIGHWAY
FEDERAL AID PROJECT

TOWN OF RICHMOND
WINOOSKI RIVER ROAD
FROM 700 FT WESTERLY OF
S. THOMPSON'S HOUSE TO
CHECKERED HOUSE OVERPASS

Pin # 99K077
Project F 43/103A
F 43 MP 0.756-0.920
F 103A MP 1.044-5.744



SCALES { PLAN - 1 IN = 50 FT
PROFILE - HORIZ. 1 IN = 50 FT
VERT. 1 IN = 10 FT
CROSS SECTIONS - 1 IN = 5 FT



LAYOUT
SCALE 1 IN = 200 FT

CONVENTIONAL SIGNS

COUNTY LINE	=====	GROUND ELEVATION	DATUM	LINE
TOWN LINE	-----	GRADE ELEVATION	DATUM	LINE
FENCE LINE	-----			
STONE WALL	-----			
UNFENCED PROPERTY	-----			
GUARD RAIL	-----			
TRAVELED WAY	-----			
RAILROAD	-----			
RETAINING WALL	-----			
CENTER LINE	-----			
SURVEY LINE	-----			
CULVERT	-----			
DROP INLET	-----			
TROLLEY POLE	-----			
POWER POLE	-----			
TELEPHONE POLE	-----			
TREES	-----			
HEDGE	-----			

CURVE DATA	
DEFLECTION ANGLE	Δ
DEGREE OF CURVE	D.
RADIUS OF CURVE	R.
TANGENT DISTANCE	T.
LENGTH OF CURVE	L.
EXTERNAL DISTANCE	E.
POINT OF INTERSECTION P.I.	P.I.
POINT OF CURVE	P.C.
POINT OF TANGENT	P.T.

RIGHT-OF-WAY DIVISION
TOWN FILE
PERPETUAL

Plc
Town of US
(To Be Returned To R.O.W. Division)

SUBMITTED BY ORDER OF THE STATE HIGHWAY BOARD
[Signature]
CHIEF ENGINEER
DEPARTMENT OF HIGHWAYS

RECOMMENDED [Signature]
DISTRICT ENGINEER
BUREAU OF PUBLIC ROADS
RECOMMENDED FOR APPROVAL [Signature]
CHIEF ENGINEER
BUREAU OF PUBLIC ROADS
APPROVED [Signature]
DIRECTOR - BUREAU OF PUBLIC ROADS

06/01/23

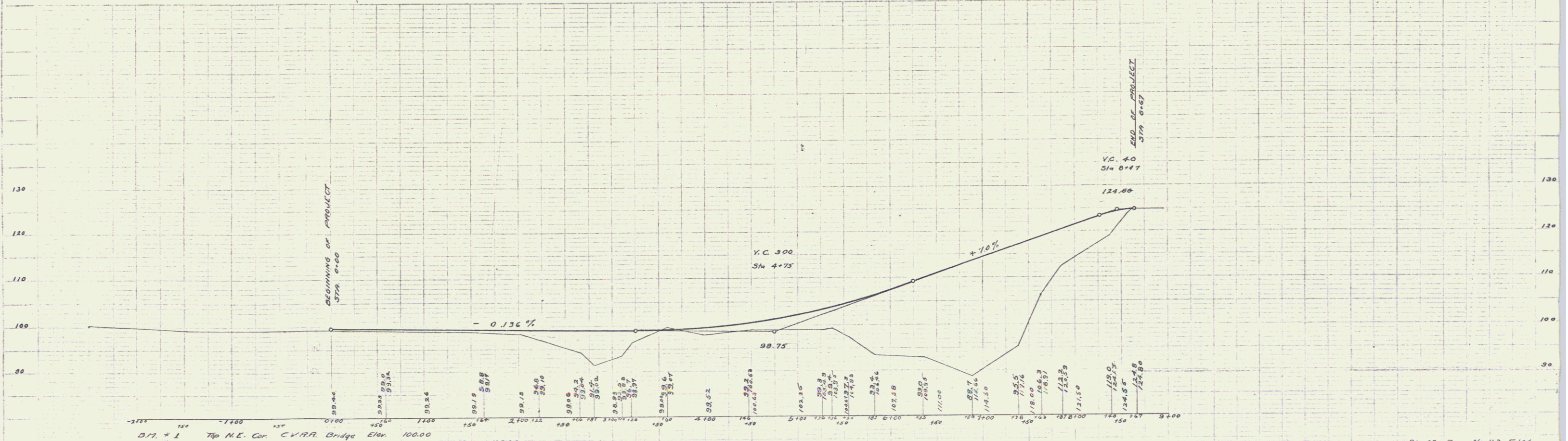
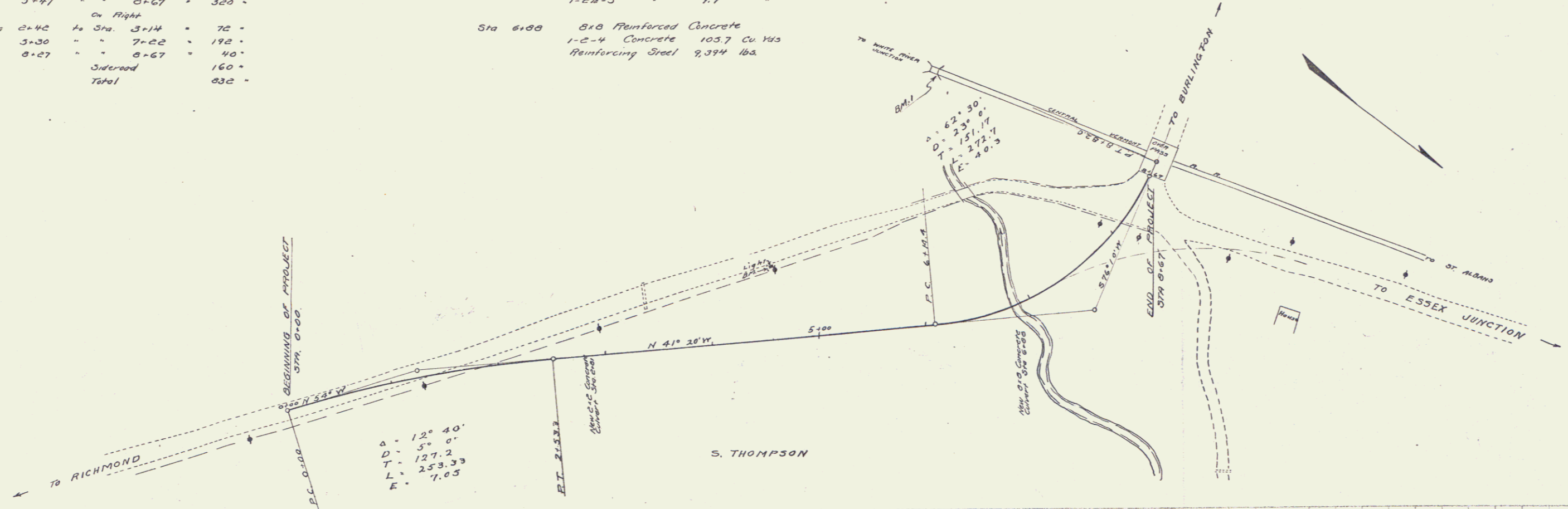
SERIES F No. 43 FILED
SHEET 1 OF 6

DIST. # 5 PLANS

GUARD RAIL REQUIRED			
On Left			
Sta. 2+66	to Sta. 3+14	=	48 ft
3+47	0+67	=	320 "
On Right			
Sta. 2+42	to Sta. 3+14	=	72 "
3+30	7+22	=	192 "
8+27	8+67	=	40 "
Underroad			160 "
Total			832 "

NEW CULVERTS REQUIRED			
Sta. 2+01			
C&C Concrete			
1-2-4 Concrete	8.0	Cu. Yds.	
1-2-5	9.7		
Sta. 6+88			
8x8 Reinforced Concrete			
1-2-4 Concrete	105.7	Cu. Yds.	
Reinforcing Steel	9,394	Lbs.	

FD. NO.	STATE	FOUN. NO.	FISCAL YEAR	SHEET NO.	TOTAL SHEETS
11	43			5	6



W.E. Walker 7/22
 J.R. Hooper

B.M. # 1 Top N.E. Cor. CVRR Bridge Elev. 100.00
 B.M. # 2 On Top of Granite Foundation of Lighthouse Elev. 98.32

Series F No 43 Filed
 Sheet 5 of 6

INDEX OF SHEETS

SHEET NO.	TITLE PAGE
1	TITLE PAGE
2	TYPICAL CROSS-SECTION OF IMPROVEMENT (CONCRETE)
3	PLAN AND PROFILE STA. 0+00 TO STA. 13+00
4	" " " " " " 13+00 " " 29+00
5	" " " " " " 29+00 " " 43+00
6	" " " " " " 43+00 " " 57+50
7	" " " " " " 57+50 " " 73+00
8	" " " " " " 73+00 " " 88+00
9	" " " " " " 88+00 " " 104+00
10	" " " " " " 104+00 " " 120+00
11	" " " " " " 120+00 " " 135+50
12	" " " " " " 135+50 " " 151+00
13	" " " " " " 151+00 " " 160+00
14	" " " " " " 160+00 " " 175+00
15	" " " " " " 175+00 " " 191+00
16	" " " " " " 191+00 " " 207+00
17	" " " " " " 207+00 " " 223+00
18	" " " " " " 223+00 " " 239+00
19	" " " " " " 239+00 " " 248+18
20	BRIDGE STA. 45+29
21	" " " " 137+03 AND 152+00
22	" " NOT INCLUDED IN PROJECT
23	" " STA. 210+25
24	" " " " 210+25
25	CRIB DESIGN
26 TO 28	STANDARD STRUCTURE SHEETS, NOS. 17-19-18
29 TO 73	CROSS SECTIONS

STATE OF VERMONT
STATE HIGHWAY DEPARTMENT

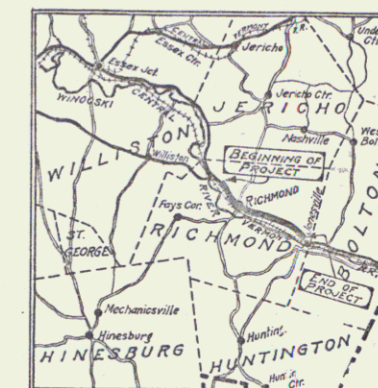
PLAN AND PROFILE OF PROPOSED
STATE HIGHWAY

FEDERAL AID PROJECT

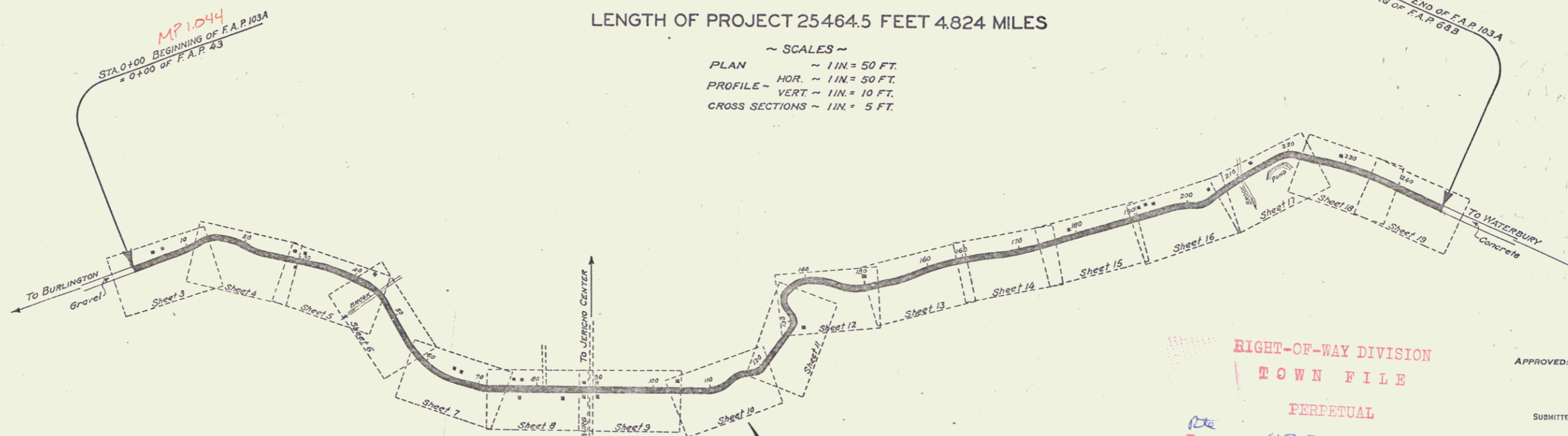
BURLINGTON-WATERBURY ROAD
IN THE
TOWN OF RICHMOND

BEGINNING AT STA. 0-00 OF F.A.P. 43 EXTENDING
EASTERLY 25464.5 FEET TO STA. 2-00 OF F.A.P. 68B
LENGTH OF PROJECT 25464.5 FEET 4.824 MILES

FED. ROAD DIST. NO.	STATE	FED. AID PROJ. NO.	FISCAL YEAR	SHEET NO.	TOTAL SHEETS
9	Vt.	103A	1928	1	73



SCALE-1IN.=4 MI.



~ SCALES ~
PLAN ~ 1 IN. = 50 FT.
PROFILE ~ HOR. ~ 1 IN. = 50 FT.
VERT. ~ 1 IN. = 10 FT.
CROSS SECTIONS ~ 1 IN. = 5 FT.

~ LAYOUT ~
SCALE ~ 1 IN. = 1000 FT.

CONVENTIONAL SIGNS

COUNTY LINE	-----
TOWN LINE	-----
FENCE LINE	-----
STONE WALL	-----
UNFENCED PROPERTY	-----
GUARD RAIL	-----
TRAVELED WAY	-----
RAILROAD	-----
RETAINING WALL	-----
CENTER LINE	-----
SURVEY LINE	-----
CULVERT	-----
DROP INLET	-----
TROLLEY POLE	-----
POWER POLE	-----
TELEPHONE POLE	-----
TREES	-----
HEDGE	-----

GROUND ELEVATION	DATUM	LINE
-----	-----	-----
-----	-----	-----

CURVE DATA

DEFLECTION ANGLE Δ
DEGREE OF CURVE D
RADIUS OF CURVE R
TANGENT DISTANCE T
LENGTH OF CURVE L
EXTERNAL DISTANCE E
POINT OF INTERSECTION P. I.
POINT OF CURVE P. C.
POINT OF TANGENT P. T.
POINT ON TANGENT P. O. T.

RIGHT-OF-WAY DIVISION
TOWN FILE
PERPETUAL
Town of US 2
(To Be Returned To R.O.W. Division)

APPROVED: April 16, 1928
H. Elmer
CHIEF ENGINEER
SUBMITTED BY ORDER OF THE STATE HIGHWAY BOARD
April 17, 1928
S. B. Paine
COMMISSIONER OF HIGHWAYS

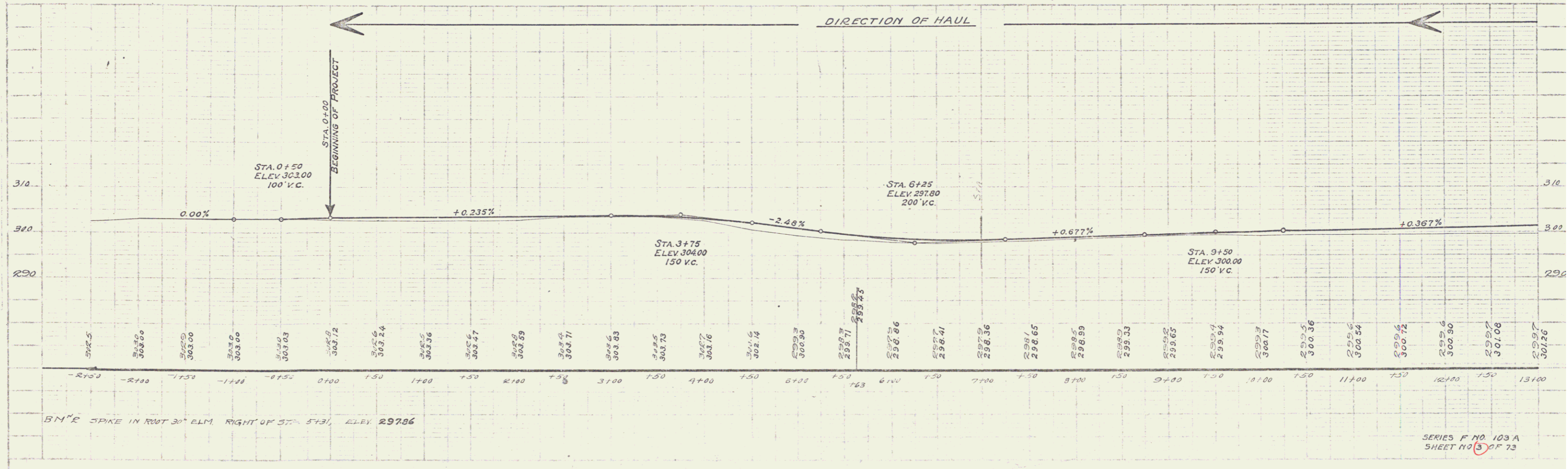
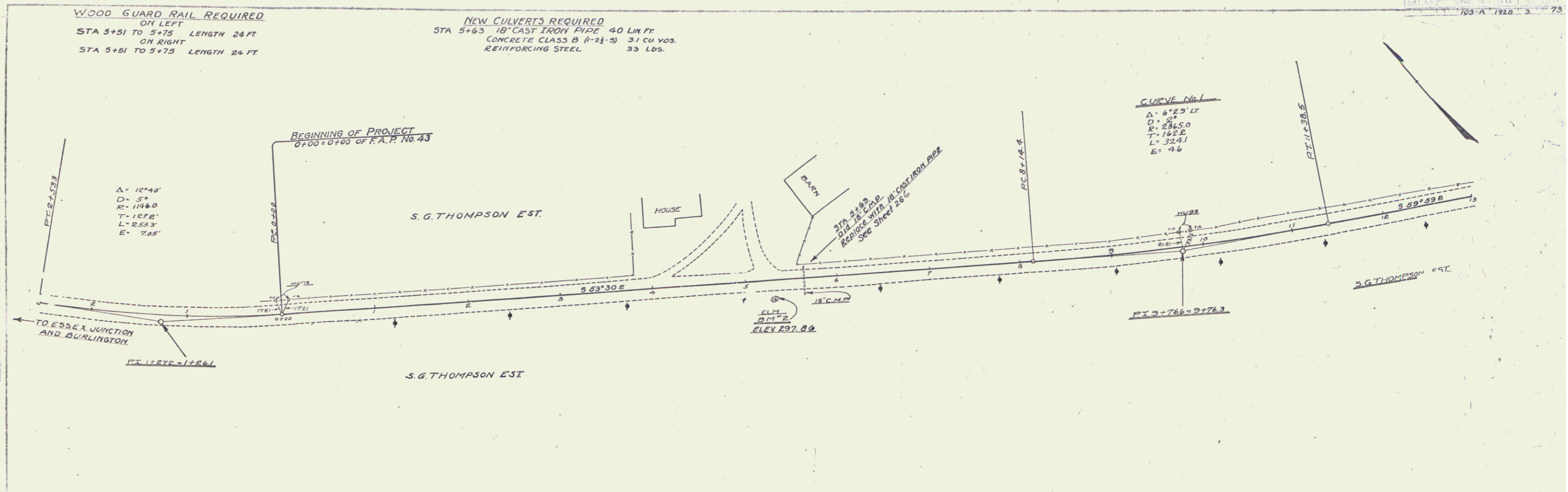
THESE PLANS SUBJECT TO SUCH REVISIONS AS MAY
BE REQUIRED BY THE BUREAU OF PUBLIC ROADS OR THE
CHIEF ENGINEER

This project to be constructed in accordance
with Standard Specifications on file with the
U.S. Bureau of Public Roads as approved July 7, 1926
Structures on this project to be constructed
in accordance with details given on Standard
Structure Sheets, Series S, Nos. 17, 18 and 19.

RECOMMENDED _____
DISTRICT ENGINEER BUREAU OF PUBLIC ROADS
RECOMMENDED FOR APPROVAL _____
CHIEF ENGINEER BUREAU OF PUBLIC ROADS
APPROVED _____
DIRECTOR - BUREAU OF PUBLIC ROADS

SERIES E. NO. 103A FILED
SHEET 1 OF 73

DIST # 53 PLANS



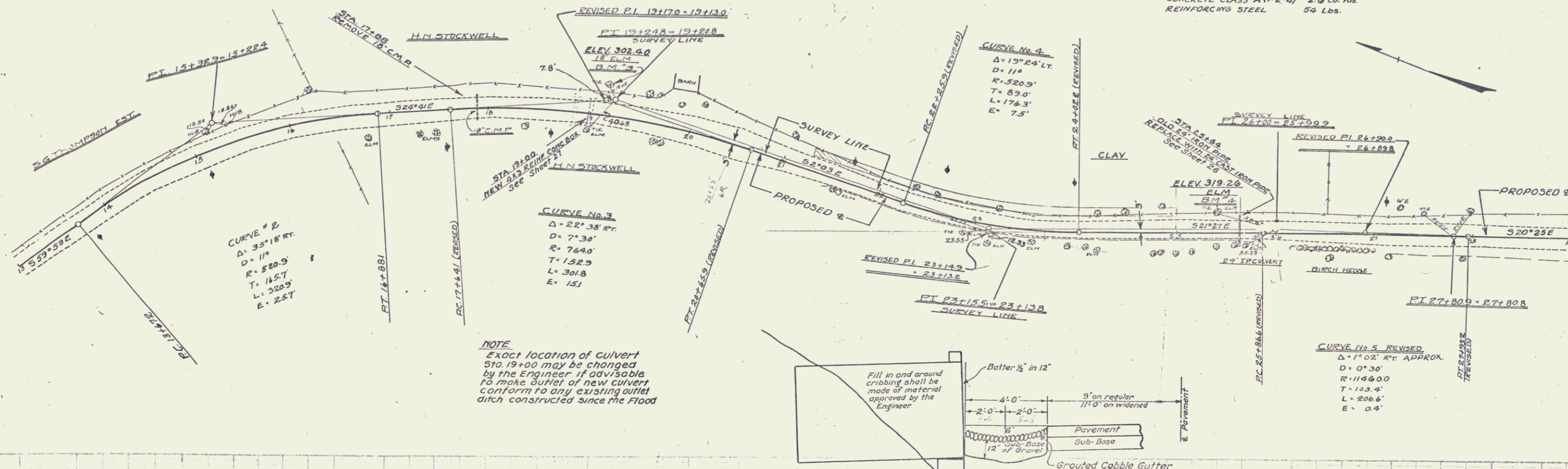
4

WOOD GUARD RAIL REQUIRED
ON LEFT
STA 18+80 TO STA 19+12 LENGTH 24 FT.
STA 25+52 TO STA 25+76 " 24 FT.

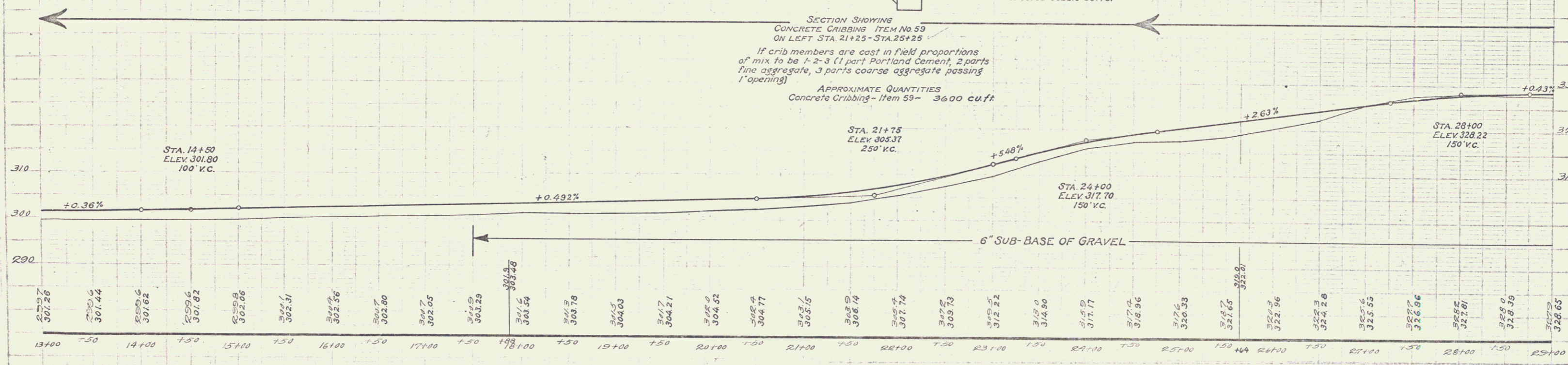
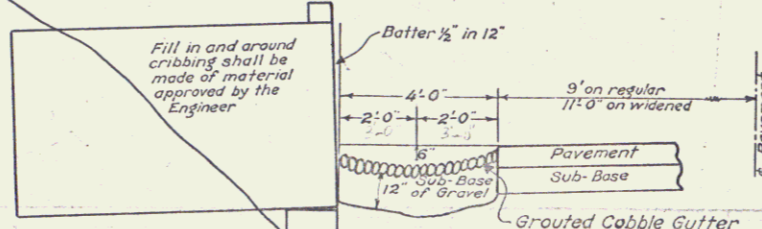
CABLE GUARD RAIL REQUIRED
ON RIGHT
STA 18+50 TO STA 26+34 LENGTH 784 FT.

NEW CULVERTS REQUIRED
STA 19+00 4x3 REINFORCED CONCRETE BOX 32 LIN FT.
CONCRETE CLASS A (1-2-4) 176 CU YDS.
REINFORCING STEEL 1150 LBS.
STA 25+64 24" CAST IRON PIPE 52 LIN FT.
CONCRETE CLASS A (1-2-4) 2.6 CU YDS.
REINFORCING STEEL 54 LBS.

FED. ROAD DIST. NO.	STATE	FISCAL YEAR	SHEET NO.	TOTAL SHEETS
103 A	VT.	1928	73	73



NOTE
Exact location of culvert Sta. 19+00 may be changed by the Engineer if advisable to make outlet of new culvert conform to any existing outlet ditch constructed since the Flood



BM 3 SPIKE IN ROOT 18" ELM, LEFT STA. 19+12, ELEV 302.40
BM 4 SPIKE IN ELM, LEFT STA. 25+42, ELEV 312.26

WOOD GUARD RAIL REQUIRED

ON LEFT
 STA. 30+67 TO STA. 30+91 LENGTH 24 FT.
 33+26 TO 33+50 " 24 FT.
 40+22 TO 40+46 " 24 FT.
 ON RIGHT
 STA. 30+67 TO STA. 30+91 LENGTH 24 FT.
 33+26 TO 33+50 " 24 FT.
 40+26 TO 40+50 " 24 FT.

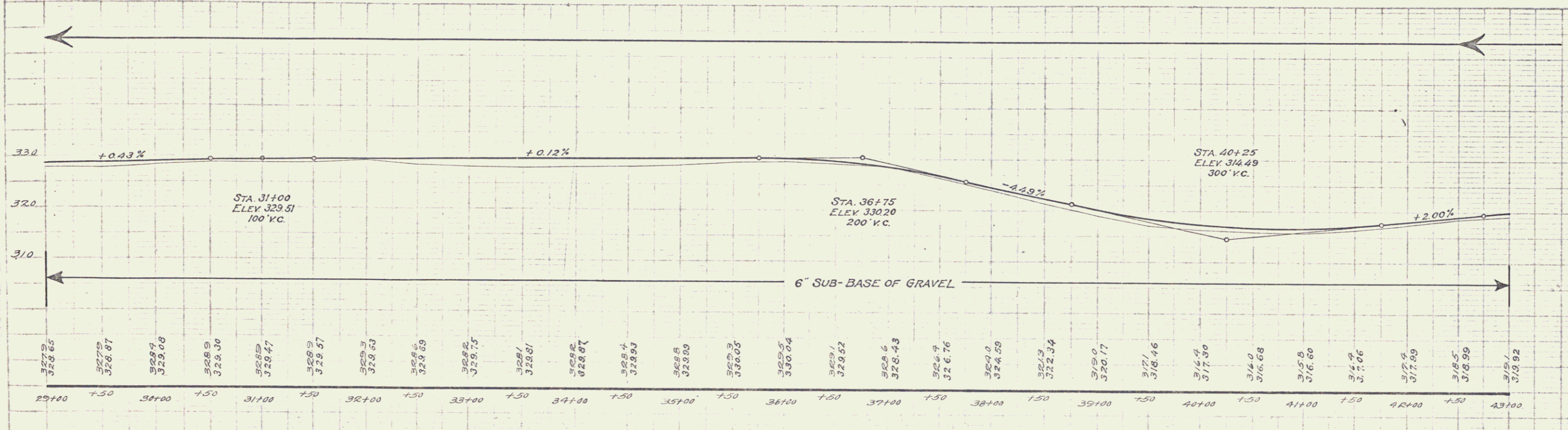
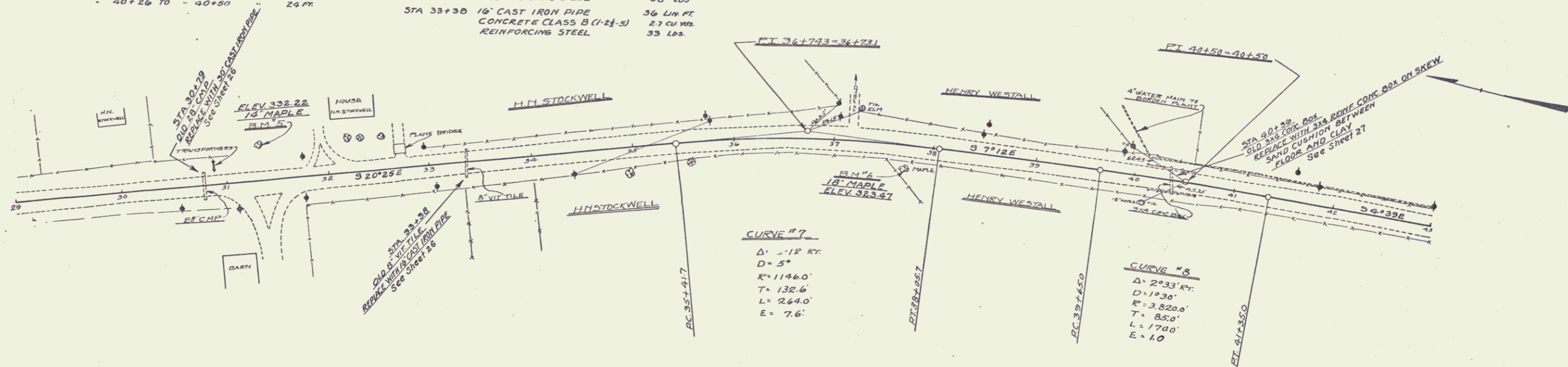
NEW CULVERTS REQUIRED

STA. 40+36 3x4 REINFORCED CONCRETE BOX 35 LIN. FT.
 CONCRETE CLASS A (1-2-4) 193 CU. YDS.
 REINFORCING STEEL
 STA. 30+79 30" CAST IRON PIPE 32 LIN. FT.
 CONCRETE CLASS A (1-2-4) 3.5 CU. YDS.
 REINFORCING STEEL 58 LBS.
 STA. 33+30 16" CAST IRON PIPE 36 LIN. FT.
 CONCRETE CLASS B (1-2-5) 2.7 CU. YDS.
 REINFORCING STEEL 33 LBS.

CABLE GUARD RAIL REQUIRED

ON RIGHT
 STA. 36+35 TO STA. 37+79 LENGTH 144 FT.

FED. ROAD DIST. NO.	STATE	PROJ. NO.	SHEET NO.	TOTAL SHEETS
			103-A	73



B.M. 5 - SPIKE IN TRUNK 14\"/>
 B.M. 6 - SPIKE IN ROOT 18\"/>

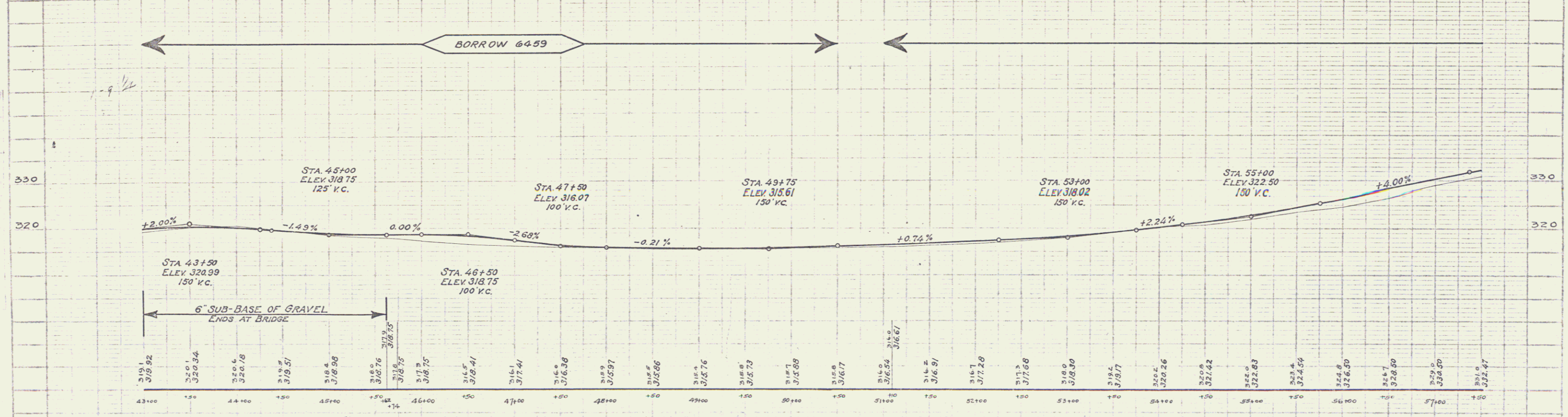
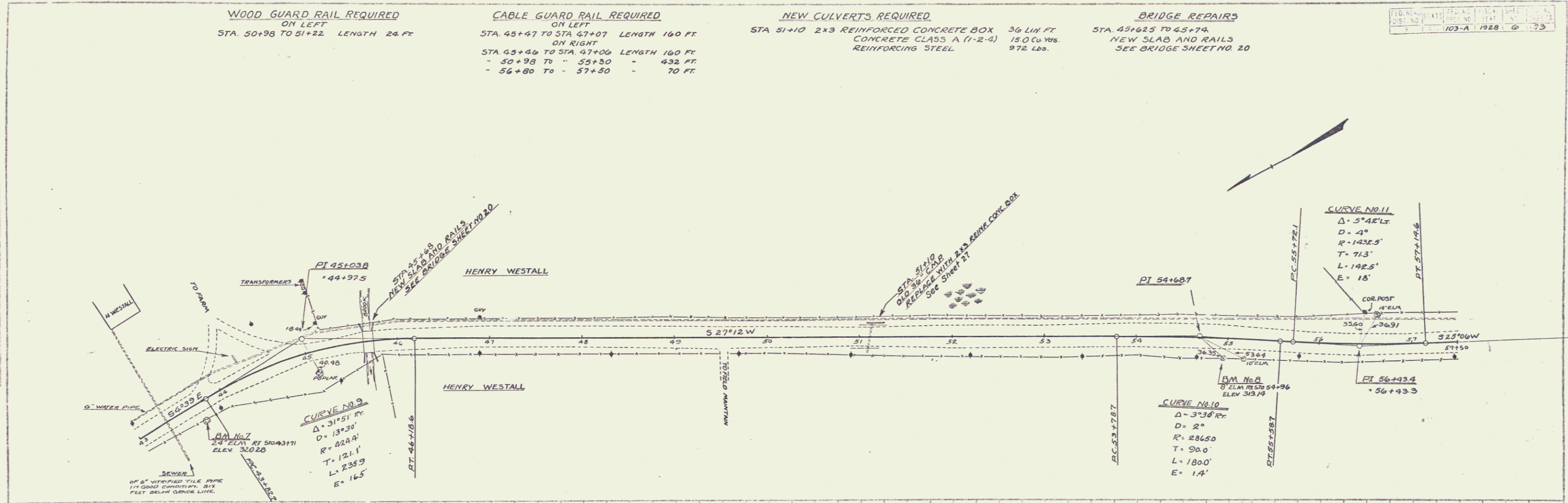
WOOD GUARD RAIL REQUIRED
ON LEFT
STA. 50+98 TO 51+22 LENGTH 24 FT

CABLE GUARD RAIL REQUIRED
ON LEFT
STA. 45+47 TO STA. 47+07 LENGTH 160 FT
ON RIGHT
STA. 43+44 TO STA. 47+06 LENGTH 160 FT
" 50+98 TO " 55+30 " 432 FT
" 56+80 TO " 57+30 " 70 FT

NEW CULVERTS REQUIRED
STA 51+10 2x3 REINFORCED CONCRETE BOX 36 LIN FT
CONCRETE CLASS A (1-2-4) 15.0 Cu Yds.
REINFORCING STEEL 972 LBS.

BRIDGE REPAIRS
STA. 45+62.5 TO 45+74
NEW SLAB AND RAILS
SEE BRIDGE SHEET NO. 20

FED. ROAD DIST. NO. 103-A 1928 6 73



A.A.P. 6-27
 J.H.C. 2-28
 A.A.P. 2-28

A.A.P. 6-27
 J.H.C. 2-28
 A.A.P. 2-28

SERIES F NO. 103 A
SHEET NO. 6 OF 73

7

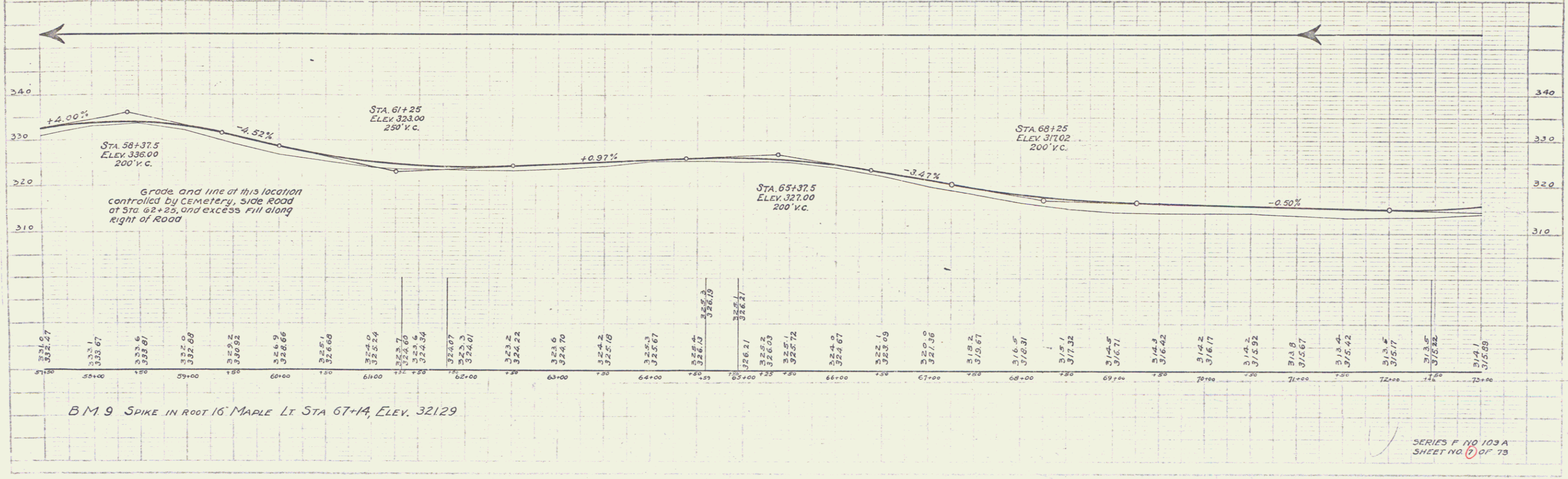
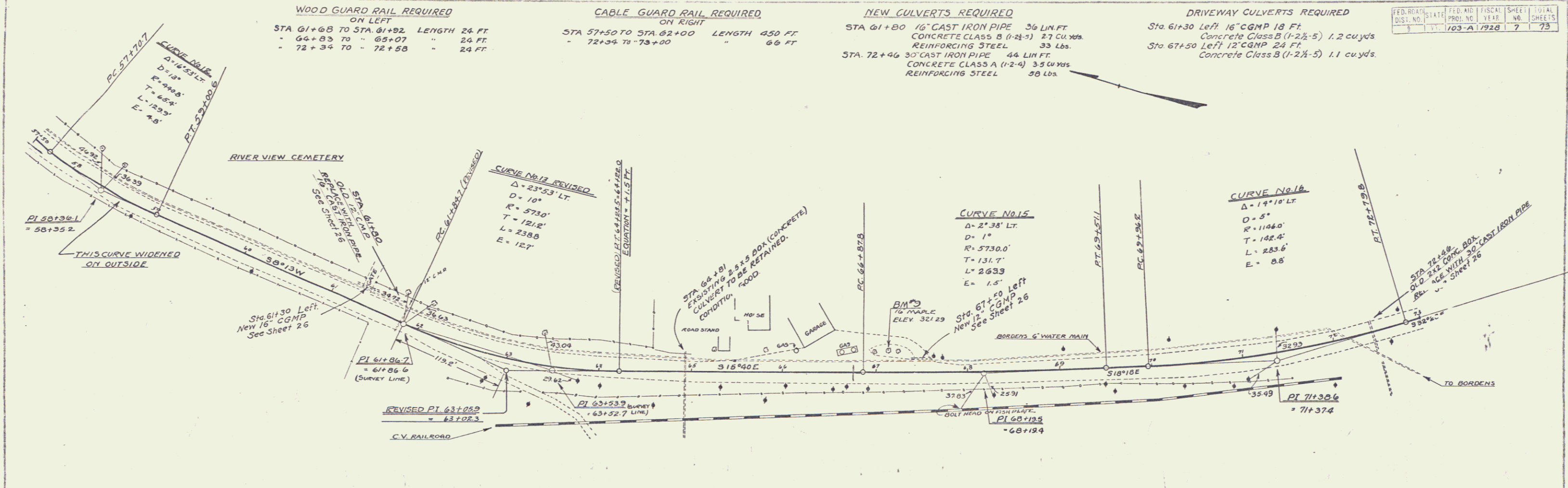
FED. ROAD DIST. NO.	STATE	PROJ. NO.	FISCAL YEAR	SHEET NO.	TOTAL SHEETS
3	VT	103-A	1928	7	73

WOOD GUARD RAIL REQUIRED ON LEFT
 STA 61+68 TO STA 61+92 LENGTH 24 FT.
 - 64+83 TO - 65+07 " 24 FT.
 - 72+34 TO - 72+58 " 24 FT.

CABLE GUARD RAIL REQUIRED ON RIGHT
 STA 57+50 TO STA 62+00 LENGTH 450 FT.
 - 72+34 TO - 73+00 " 66 FT.

NEW GULVERTS REQUIRED
 STA 61+80 16" CAST IRON PIPE 36 LIN. FT.
 CONCRETE CLASS B (1-2 1/2-5) 27 cu. yds.
 REINFORCING STEEL 33 lbs.
 STA 72+46 30" CAST IRON PIPE 44 LIN. FT.
 CONCRETE CLASS A (1-2-4) 35 cu. yds.
 REINFORCING STEEL 38 lbs.

DRIVEWAY CULVERTS REQUIRED
 Sta 61+30 Left 16" CGMP 18 FT.
 Concrete Class B (1-2 1/2-5) 1.2 cu. yds.
 Left 12" CGMP 24 FT.
 Sta 67+50 Concrete Class B (1-2 1/2-5) 1.1 cu. yds.



SERIES F NO 103 A
 SHEET NO. 7 OF 73

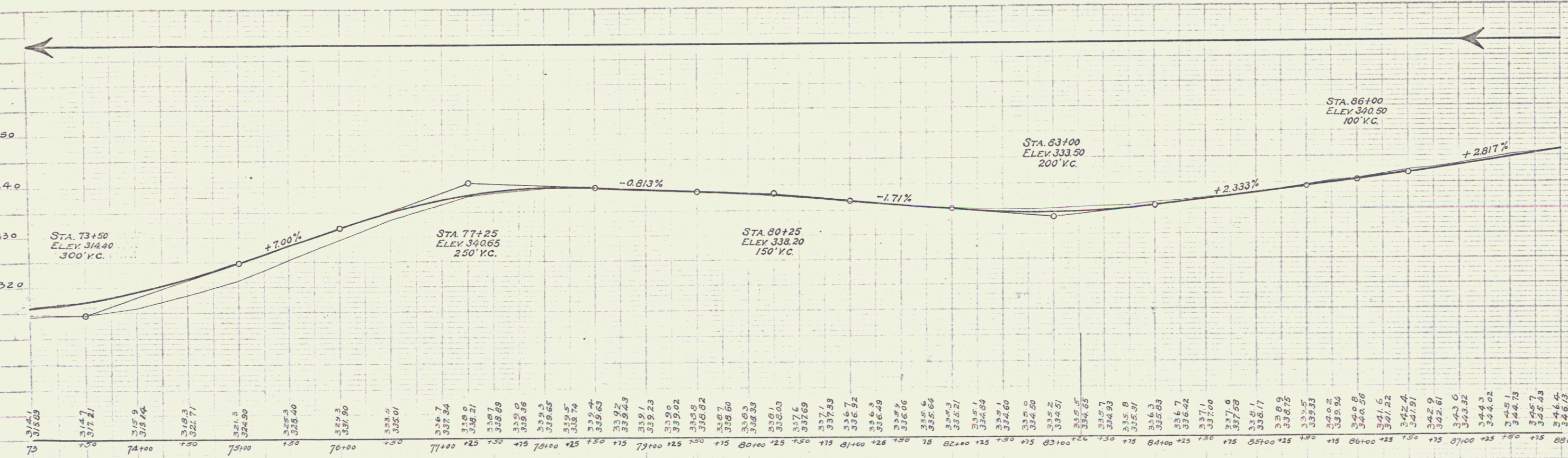
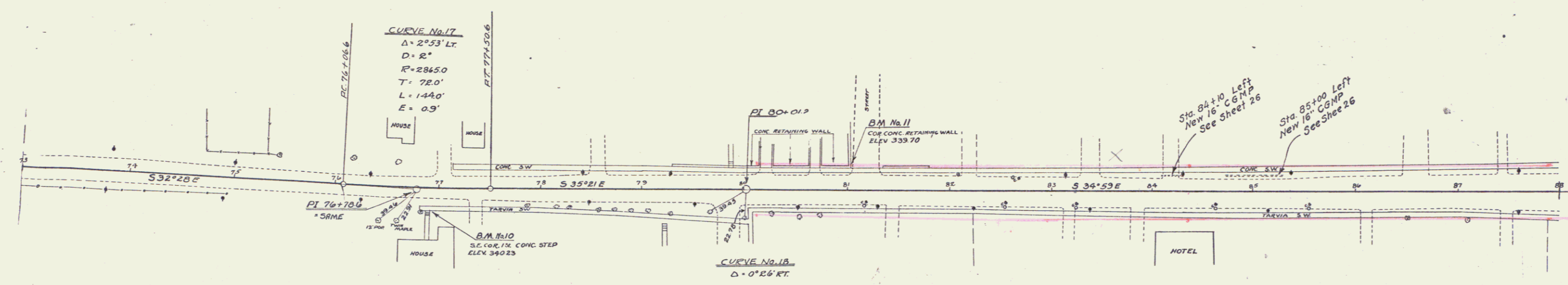
8

CABLE GUARD RAIL REQUIRED
ON RIGHT
STA. 73+00 TO STA. 74+98 LENGTH 198 FT.

CHANGE ELEVATIONS OF CATCH BASINS @
ITEM 77

DRIVEWAY CULVERTS REQUIRED
Sta 84+10 Left 16" C.G.M.P. 16 ft.
Concrete Class B (1-2 1/2-3) 1.1 cu. yds
Sta 85+00 Left 16" C.G.M.P. 32 ft.
Concrete Class B (1-2 1/2-3) 1.1 cu. yds

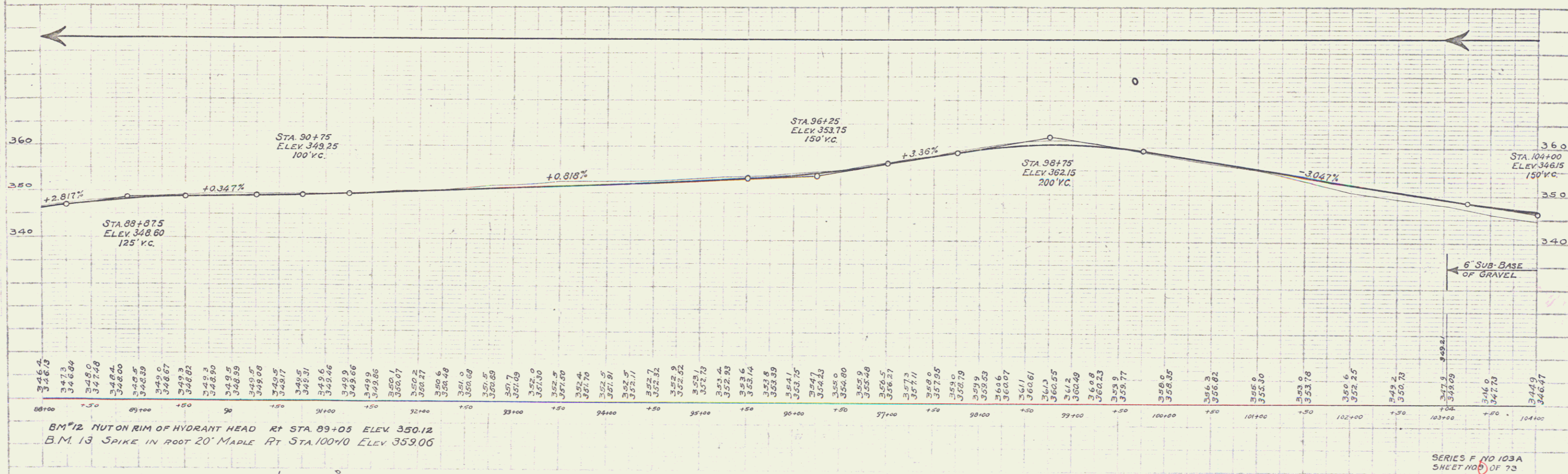
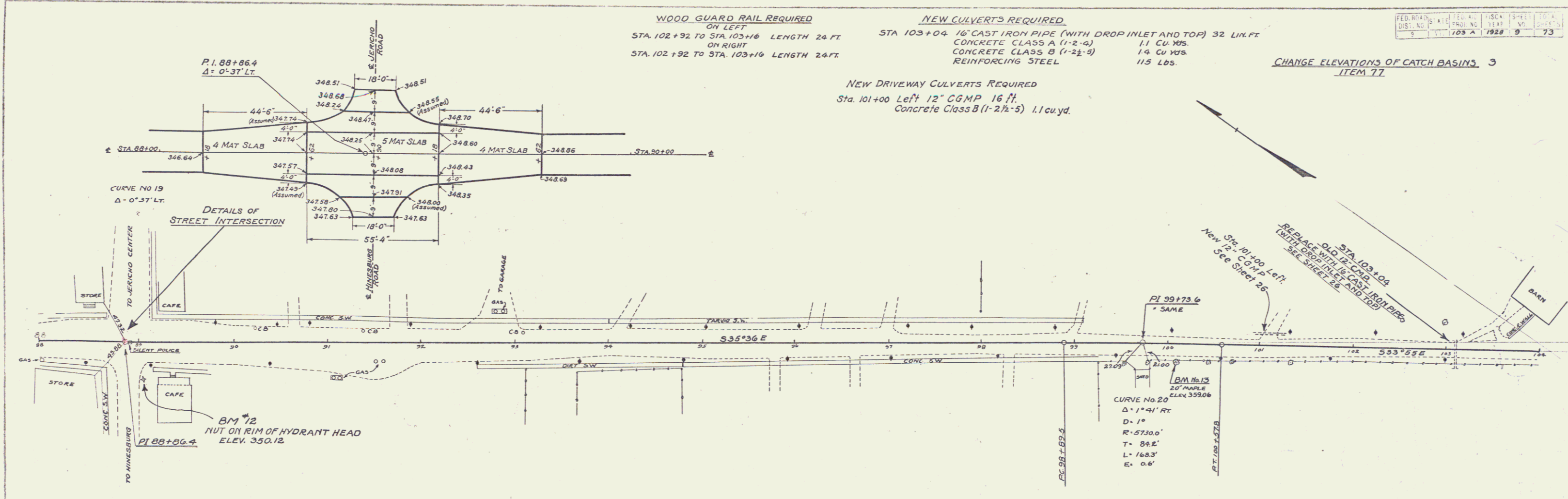
FED. ROAD DIST. NO.	STATE	FED. AID PROJ. NO.	FISCAL YEAR	SHEET NO.	TOTAL SHEETS
103-A	1929	8	73		



BM. 10 - SE CORNER CONCRETE STEP RT. OF STA. 76+85 ELEV. 340.23
BM. 11 - CORNER CONCRETE P.W. LT. OF STA. 81+04 339.70

SERIES F. NO. 103 A
SHEET NO. 8 OF 73

9



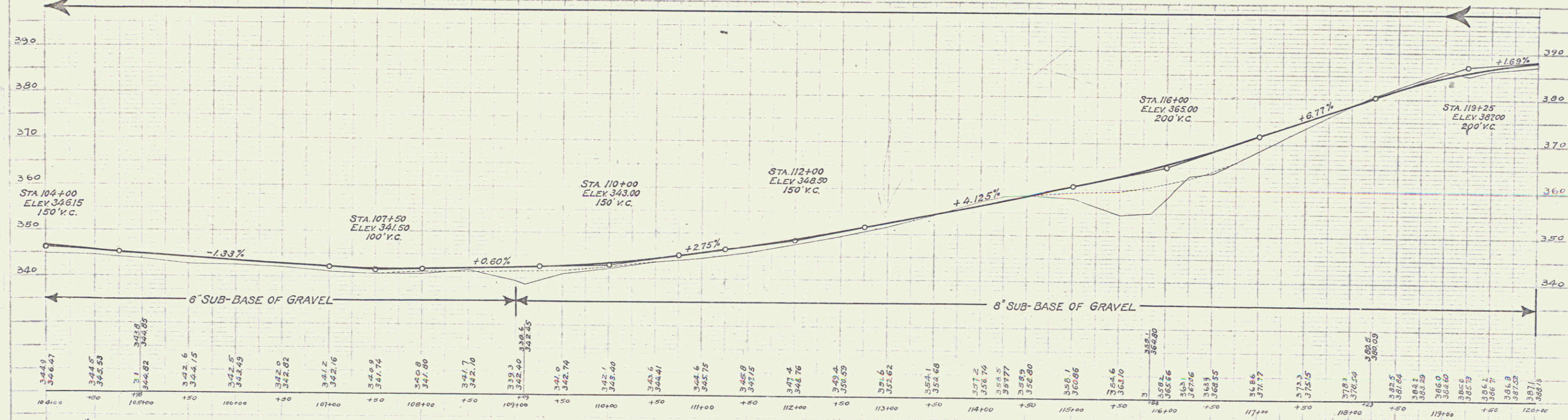
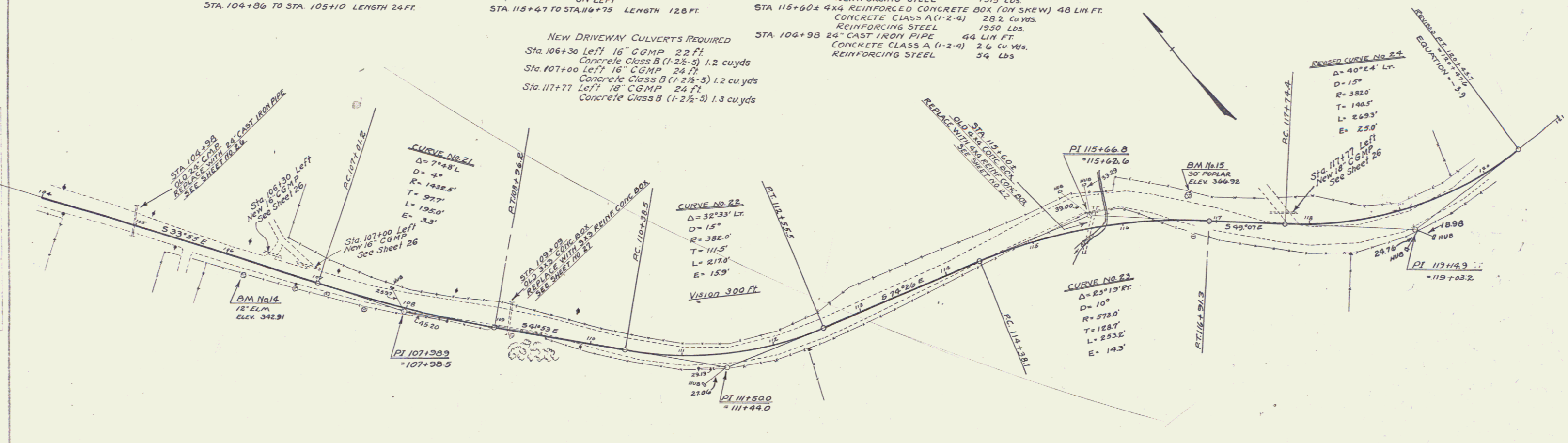
WOOD GUARD RAIL REQUIRED
 ON LEFT
 STA. 104+06 TO STA. 105+10 LENGTH 24 FT
 " 108+97 TO " 109+21 " 24 FT
 ON RIGHT
 STA. 104+86 TO STA. 105+10 LENGTH 24 FT

CABLE GUARD RAIL REQUIRED
 ON RIGHT
 STA. 105+66 TO STA. 109+90 LENGTH 424 FT
 " 114+79 TO " 116+15 " 136 FT
 ON LEFT
 STA. 115+47 TO STA. 116+75 LENGTH 128 FT

NEW CULVERTS REQUIRED
 STA. 109+09 3x3 REINFORCED CONCRETE BOX 44 LIN FT
 CONCRETE CLASS A (1-2-4) 201 cu yds
 REINFORCING STEEL 1315 Lbs.
 STA. 115+60± 4x4 REINFORCED CONCRETE BOX (ON SKEW) 48 LIN FT
 CONCRETE CLASS A (1-2-4) 282 cu yds
 REINFORCING STEEL 1930 Lbs.
 STA. 104+98 24" CAST IRON PIPE 44 LIN FT
 CONCRETE CLASS A (1-2-4) 26 cu yds
 REINFORCING STEEL 54 Lbs

NEW DRIVEWAY CULVERTS REQUIRED
 Sta. 106+30 Left 16" CGMP 22 FT
 Concrete Class B (1-2½-3) 1.2 cu yds
 Sta. 107+00 Left 16" CGMP 24 FT
 Concrete Class B (1-2½-3) 1.2 cu yds
 Sta. 117+77 Left 18" CGMP 24 FT
 Concrete Class B (1-2½-3) 1.3 cu yds

FED. ROAD DIST. NO.	STATE	PROJECT NO.	FISCAL YEAR	SHEET NO.	TOTAL SHEETS
103-A	NC	1928	1928	10	73



BM #14 SPIKE IN TRUNK OF 12" ELM. RT. STA. 106+24 ELEV. 342.91
 BM #15 SPIKE IN ROOT OF 30" POPLAR. LYSTA. 116+70 ELEV. 366.92

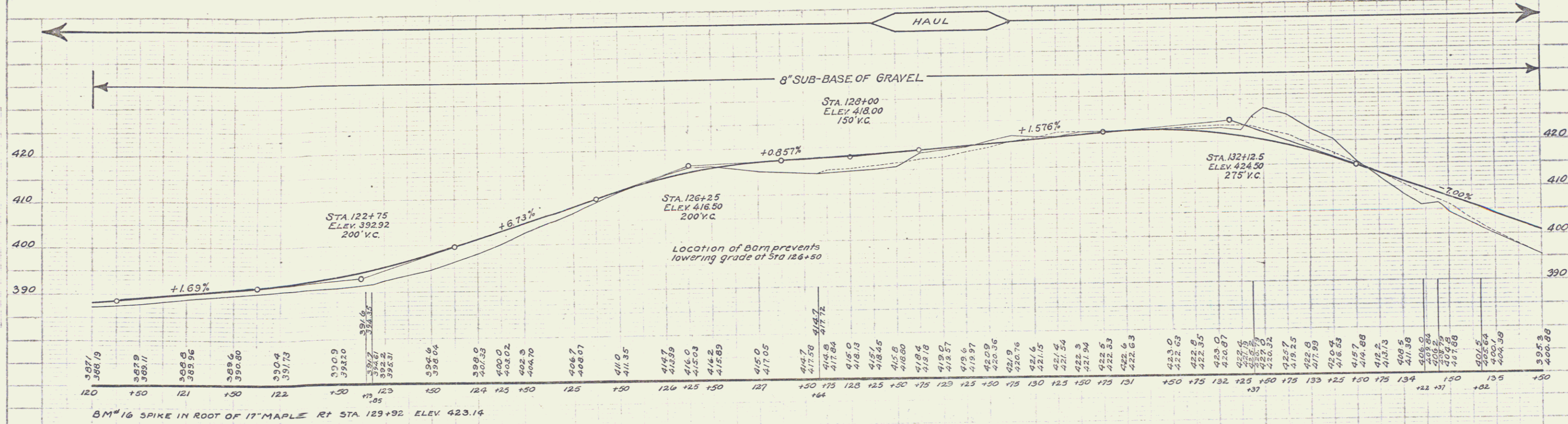
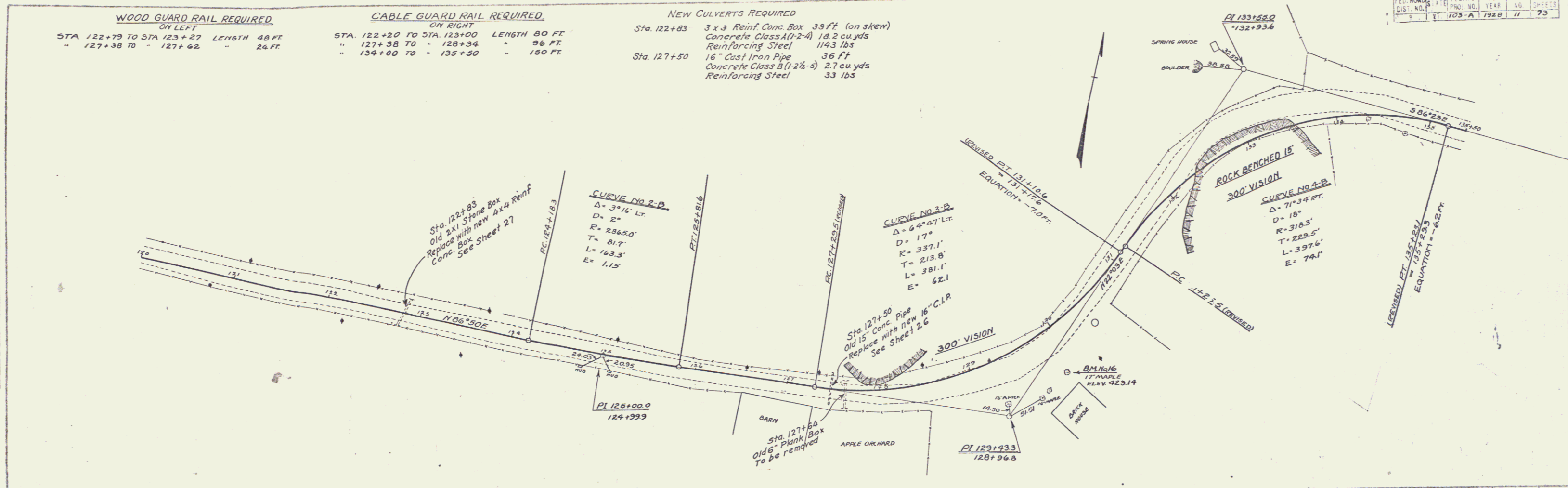
SERIES F NO. 103 A
 SHEET NO. 10 OF 73

WOOD GUARD RAIL REQUIRED
ON LEFT
STA 122+79 TO STA 123+27 LENGTH 48 FT
" 127+38 TO " 127+62 " 24 FT

CABLE GUARD RAIL REQUIRED
ON RIGHT
STA 122+20 TO STA 123+00 LENGTH 80 FT
" 127+38 TO " 128+34 " 96 FT
" 134+00 TO " 135+30 " 150 FT

NEW CULVERTS REQUIRED
Sta. 122+83 3 x 3 Reinf Conc Box 39 ft (on skew)
Concrete Class A (1-2-4) 18.2 cu yds
Reinforcing Steel 119.3 lbs
Sta. 127+50 16" Cast Iron Pipe 36 ft
Concrete Class B (1-2 1/2-3) 2.7 cu yds
Reinforcing Steel 33 lbs

FED. ROAD DIST. NO.	FED. AID PROJ. NO.	FISCAL YEAR	SHEET NO.	TOTAL SHEETS
103-A	1928	11	73	



A.S. DOE P.S. 1000 1/12

A.S. DOE P.S. 1000 1/12

SERIES F NO. 103 A SHEET NO. 73 OF 73

12

WOOD GUARD RAIL REQUIRED
ON LEFT
STA. 141+49 TO STA 141+73 LENGTH 24 FT.
" 147+81 TO " 148+05 " 24 FT.
ON RIGHT
STA 147+81 TO STA 148+05 LENGTH 24 FT.

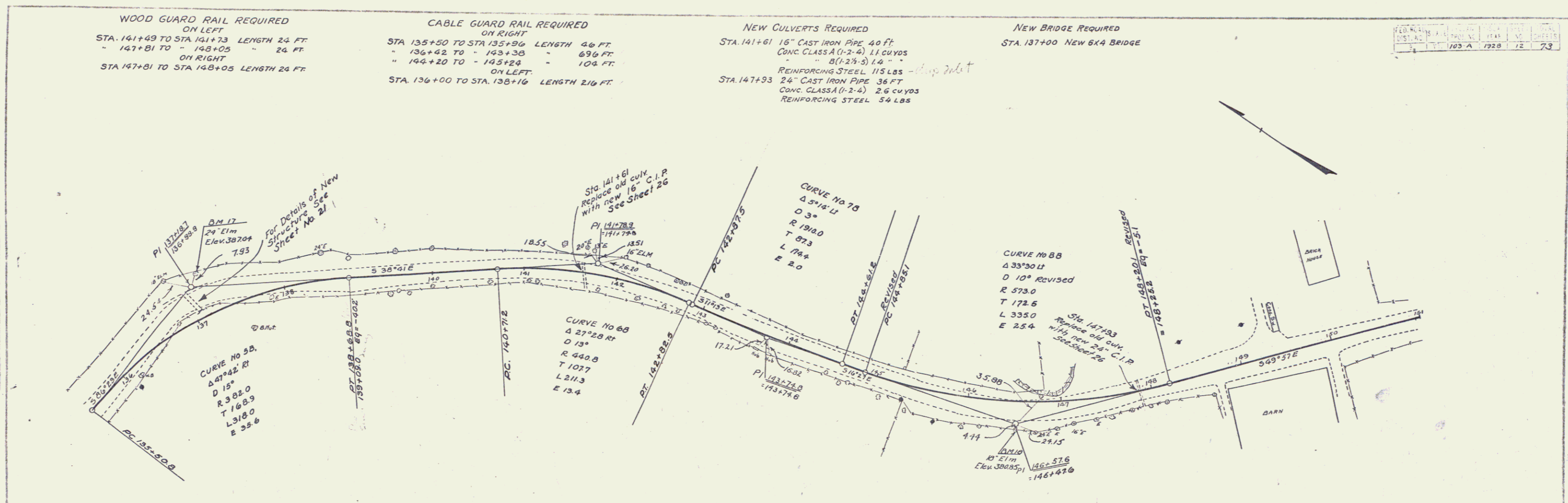
CABLE GUARD RAIL REQUIRED
ON RIGHT
STA 135+50 TO STA 135+96 LENGTH 46 FT.
" 136+62 TO " 143+38 " 69 FT.
" 144+20 TO " 145+24 " 104 FT.
ON LEFT
STA. 136+00 TO STA. 138+16 LENGTH 216 FT.

NEW CULVERTS REQUIRED
STA. 141+61 16" CAST IRON PIPE 40 FT.
CONC. CLASS A (1-2-4) 11 CU YDS
" " B (1-2 1/2-5) 1.4 "
REINFORCING STEEL 115 LBS
STA. 147+93 24" CAST IRON PIPE 36 FT.
CONC. CLASS A (1-2-4) 2.6 CU YDS
REINFORCING STEEL 54 LBS

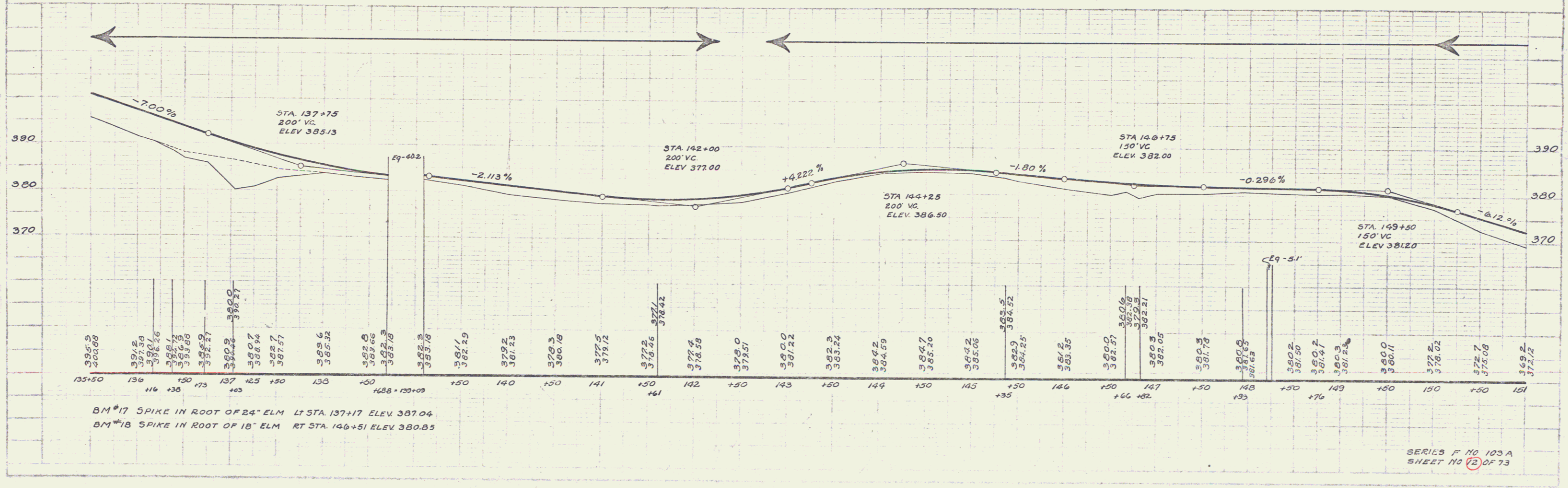
NEW BRIDGE REQUIRED
STA. 137+00 NEW 6x4 BRIDGE

DATE	BY	SCALE	YEAR	SHEET
11/22	AD WOOD	1" = 40'	1928	73

A. D. WOOD
11/22
2/122



A. D. WOOD
11/22
2/122



BM #17 SPIKE IN ROOT OF 24" ELM LT STA. 137+17 ELEV 387.04
BM #18 SPIKE IN ROOT OF 18" ELM RT STA. 146+51 ELEV 380.85

SERIES F NO 103A
SHEET NO 72 OF 73

A.A. O'DONOGHUE
A.S. WOOD
1914/18

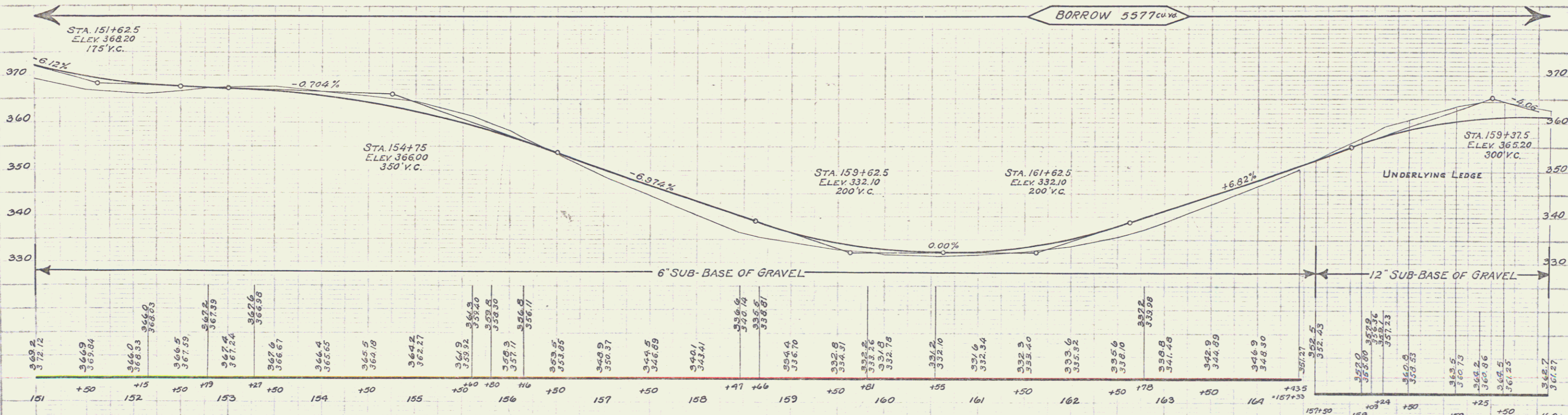
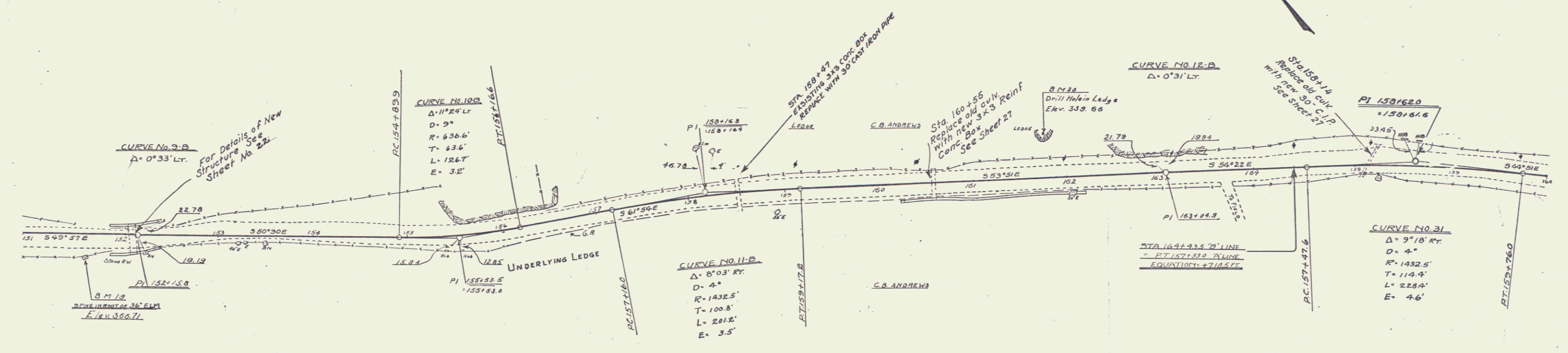
A.A. O'DONOGHUE
A.S. WOOD
1914/18

WOOD GUARD RAIL REQUIRED
ON LEFT
STA 152+96 TO STA 153+52 LENGTH 56 FT
" 153+12 TO " 158+36 " 24 FT
" 160+43 TO " 160+67 " 24 FT
ON RIGHT
STA 157+97 TO STA 158+21 LENGTH 24 FT

CABLE GUARD RAIL REQUIRED
ON LEFT
STA 151+23 TO STA 152+27 LENGTH 104 FT
" 157+24 TO " 158+04 " 160 FT
ON RIGHT
STA 151+55 TO STA 152+27 LENGTH 72 FT
" 156+33 TO " 163+05 " 712 FT

NEW CULVERTS REQUIRED
Sta 158+14 30" Cast Iron Pipe 40 Ft
Conc. Class A (1-2-4) 4.2 cu yds
Reinforcing Steel 139 lbs
Sta 160+55 3'x3' Reinf. Conc. Box 32 Ft
Conc. Class A (1-2-4) 18.1 cu yds
Reinforcing Steel 1080 lbs
Sta 158+47(B) 30" Cast Iron Pipe 66 Ft
Conc. Class A (1-2-4) 3.5 cu yds
Reinforcing Steel 59 lbs.

PL. 103 A	1928	13	73
-----------	------	----	----



B.M. NO. 19 - SPIKE IN ROOT OF 36" ELM - RIGHT OF STA. 151+60 - ELEV. 366.71
B.M. NO. 20 - DRILL HOLE IN LEDGE - LEFT OF STA. 161+78 - ELEV. 339.66

SERIES F NO. 103 A
SHEET NO. 13 OF 73

WOOD GUARD RAIL REQUIRED
 ON LEFT
 STA. 163+28 TO STA. 163+52 LENGTH 24 FT.
 " 166+42 TO " 166+66 " 24 FT.
 ON RIGHT
 STA. 163+28 TO STA. 163+52 LENGTH 24 FT.
 " 166+42 TO " 166+66 " 24 FT.

CABLE GUARD RAIL REQUIRED
 ON LEFT
 STA. 169+08 TO STA. 170+44 LENGTH 136 FT.
 ON RIGHT
 STA. 168+38 TO STA. 169+74 LENGTH 136 FT.

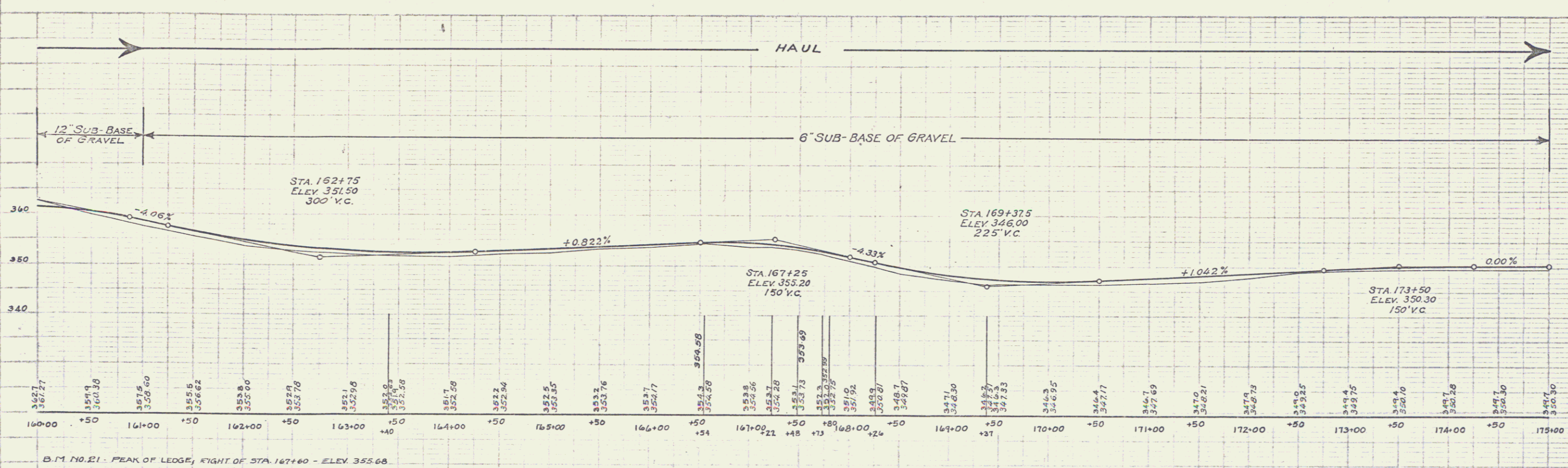
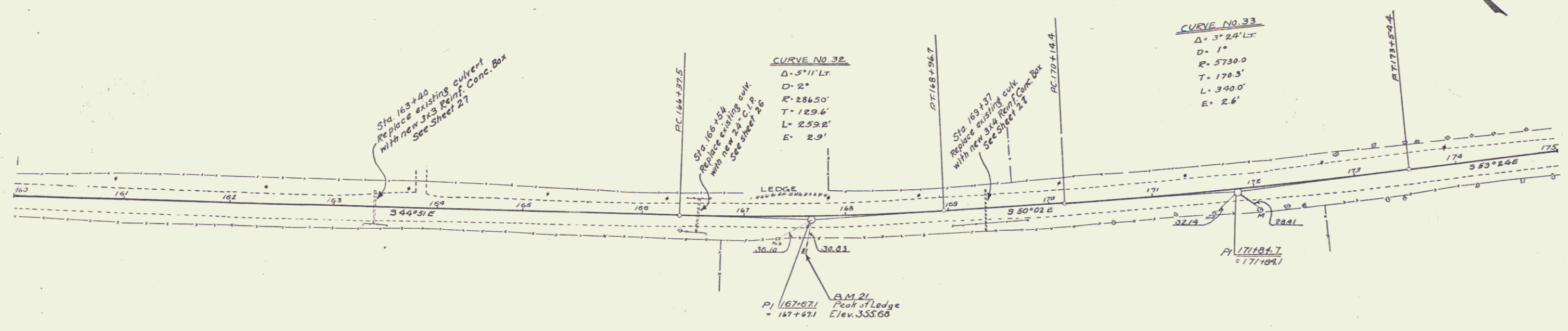
NEW CULVERTS REQUIRED

Sta. 163+40 3x3 Reinf. Conc. Box 35 ft.
 Concrete Class A (1-2-4) 16.8 cu yds
 Reinforcing Steel 1044 lbs.

Sta. 169+37 3x4 Reinf. Conc. Box 43 ft.
 Concrete Class A (1-2-4) 23.2 cu yds
 Reinforcing Steel 1470 lbs.

Sta. 166+54 24" Cast Iron Pipe 32 ft.
 Concrete Class A (1-2-4) 2.6 cu yds
 Reinforcing Steel 54 lbs.

A.A. DOE
 C.H. LOOK
 3/1/25



A.A. DOE
 J.A. WILLIAMS
 3/1/25

1027
1120
A.A. DOE
CIVIL ENGINEER

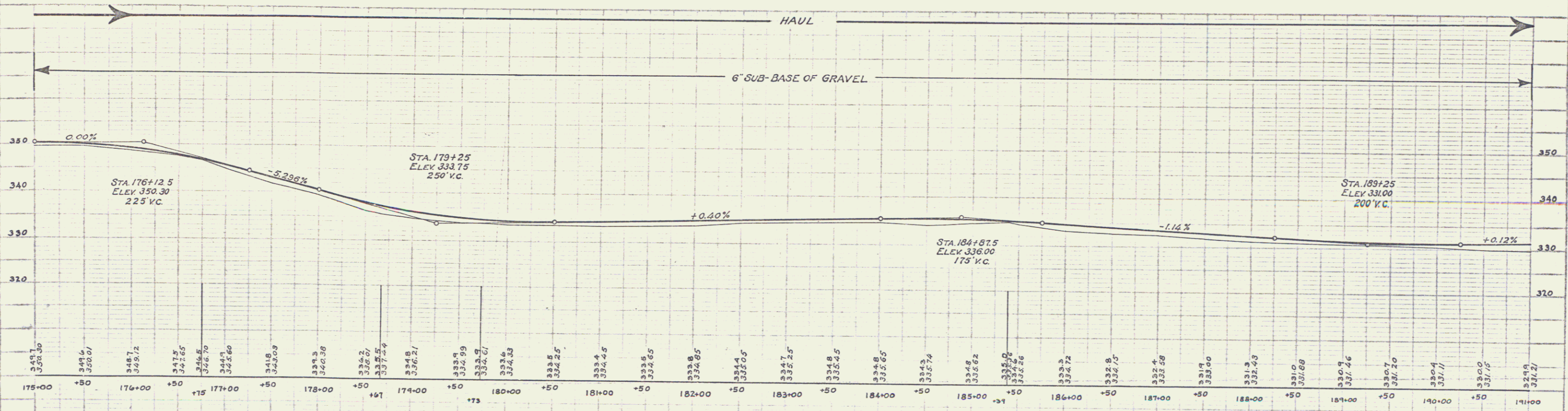
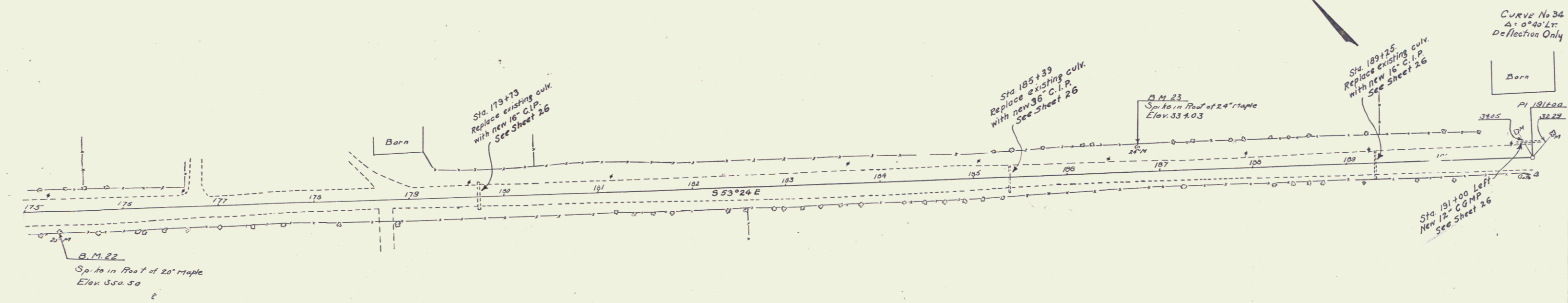
A.A. DOE
J.A. WILLIAMS
3/1/22

WOOD GUARD RAIL REQUIRED
ON LEFT
STA. 179+61 TO STA. 179+85 LENGTH 24 FT
" 185+27 TO " 185+51 " 24 FT
" 189+13 TO " 189+37 " 24 FT
ON RIGHT
STA. 179+61 TO STA. 179+85 LENGTH 24 FT
" 185+27 TO " 185+51 " 24 FT
" 189+13 TO " 189+37 " 24 FT

NEW CULVERTS REQUIRED
Sta. 179+73 16" Cast Iron Pipe 32 ft.
Concrete Class B (1-2 1/2-5) 2.7 cu yds
Reinforcing Steel 33 lbs
Sta. 185+33 36" Cast Iron Pipe 32 ft.
Concrete Class A (1-2-4) 4.3 cu yds
Reinforcing Steel 58 lbs
Sta. 189+25 16" Cast Iron Pipe 32 ft.
Concrete Class B (1-2 1/2-5) 2.7 cu yds
Reinforcing Steel 33 lbs

NEW DRIVEWAY CULVERTS REQUIRED
Sta. 191+00 Left 12" CGMP 22 ft.
Concrete Class B (1-2 1/2-5) 1.1 cu yds.

FED. ROAD DIST. NO.	STATE	FED. AC. PROJ. NO.	FISCAL YEAR	SHEET NO.	TOTAL SHEETS
1	T	103 A	1928	13	73



B.M. NO. 22 - SPIKE IN ROOT OF 20" MAPLE, RIGHT OF STA. 175+34 - ELEV. 350.50
 B.M. NO. 23 - SPIKE IN ROOT OF 24" MAPLE, LEFT OF STA. 186+75 - ELEV. 334.03

SERIES F NO. 103 A
 SHEET NO. 13 OF 73

WOOD GUARD RAIL REQUIRED
ON LEFT
STA 196+29 TO STA 196+53 LENGTH 24 FT
ON RIGHT
STA 196+29 TO STA 196+53 LENGTH 24 FT

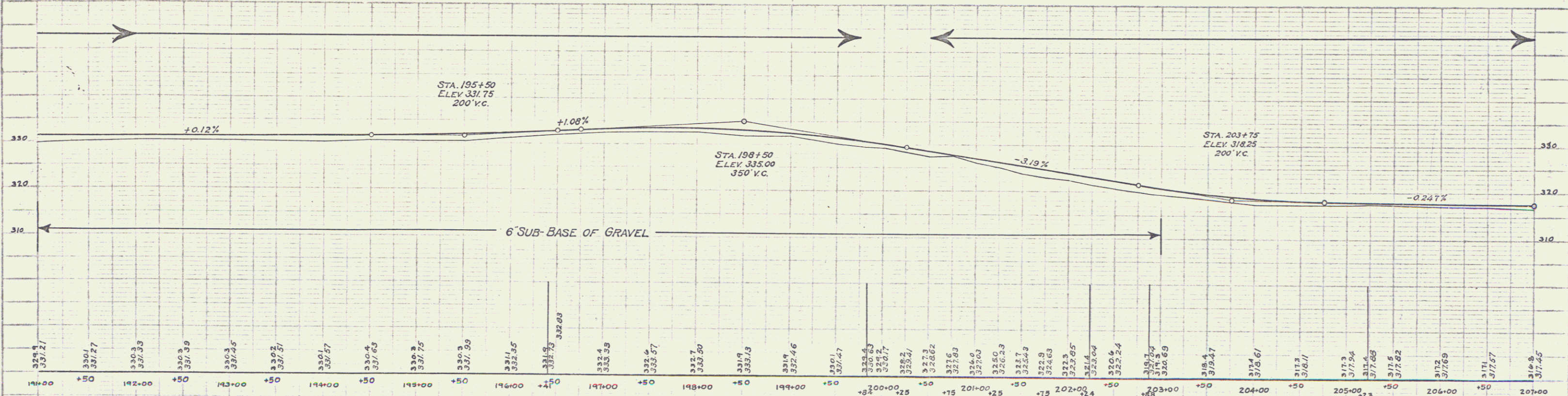
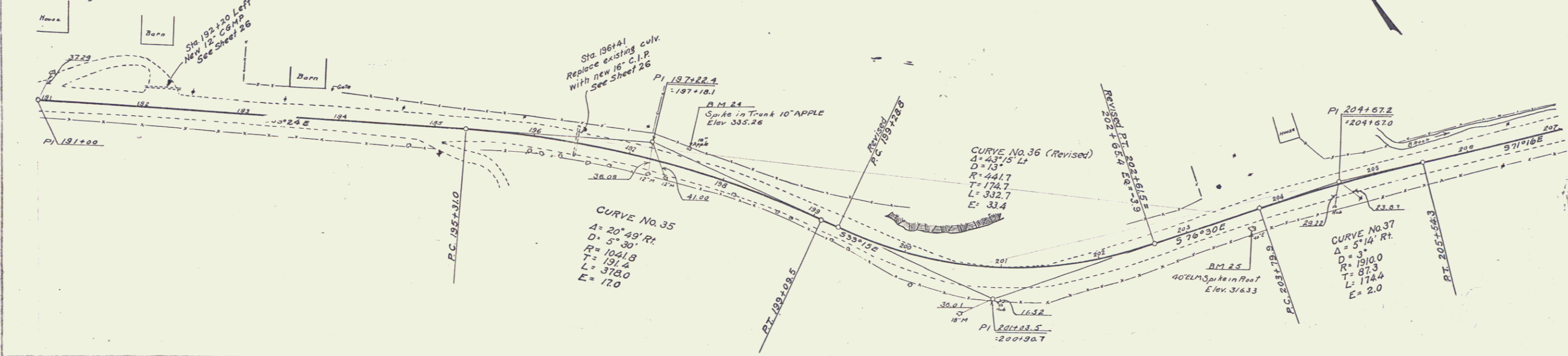
CABLE GUARD RAIL REQUIRED
ON RIGHT
STA 197+22 TO STA 199+39 LENGTH 216 FT
" 202+20 TO " 203+24 " 104 FT

NEW CULVERTS REQUIRED
Sta. 196+41 16" Cast Iron Pipe 36 ft.
Conc. Class B (1-2 1/2-s) 2.7 cu yds
Reinforcing Steel 33 lbs

NEW DRIVEWAY CULVERTS REQUIRED
Sta. 192+20 Left 12" CGMP 28 ft.
Conc. Class B (1-2 1/2-s) 1.1 cu yds

PROJ. NO.	DATE	SCALE	SHEET NO.	TOTAL SHEETS
103-A	1928	1" = 40'	16	73

CURVE No. 34
 $\Delta = 0^{\circ}40' L$
Deflection only



BM #24 SPIKE IN TRUNK OF 10' APPLE LT STA. 197+22 ELEV 335.26
BM #25 SPIKE IN ROOT OF 40' ELM RT STA. 203+14 ELEV 316.33

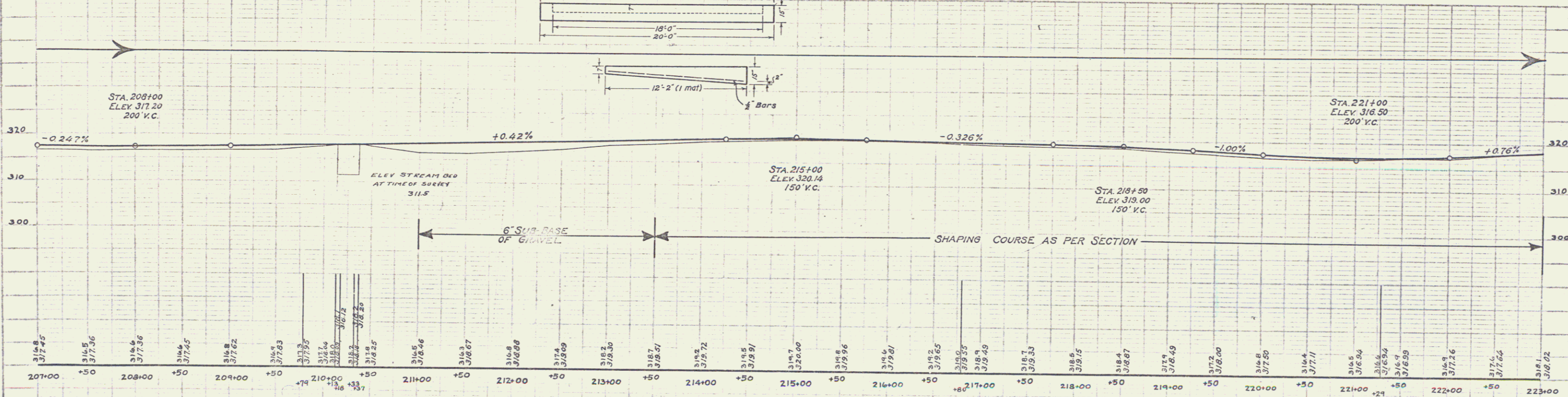
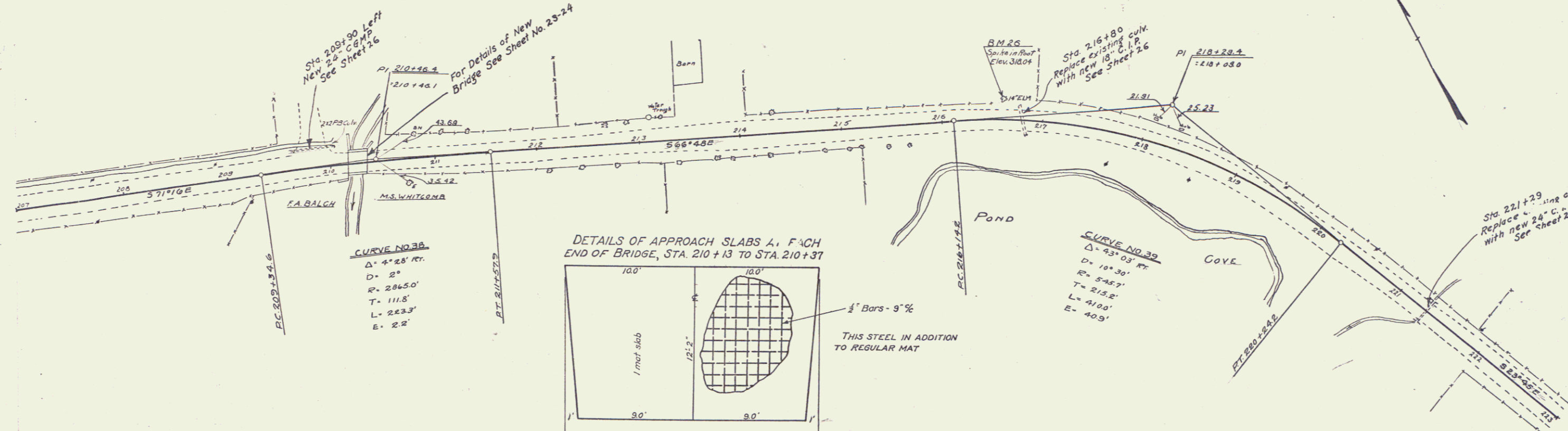
WOOD GUARD RAIL REQUIRED
 ON LEFT
 STA. 216+68 TO STA. 218+92 LENGTH 224 FT
 221+17 TO 221+41 " 24 FT
 ON RIGHT
 STA. 216+68 TO STA. 218+92 LENGTH 224 FT
 221+17 TO 221+41 " 24 FT

CABLE GUARD RAIL REQUIRED
 ON RIGHT
 STA. 209+79 TO STA. 210+59 LENGTH 80 FT
 ON LEFT
 STA. 210+13 TO STA. 211+97 LENGTH 184 FT

NEW CULVERTS REQUIRED
 Sta. 216+80 18" Cast Iron Pipe 36 ft.
 Conc. Class B (1-2-5) 3.1 cu. yds
 Reinforcing Steel 33 lbs
 Sta. 221+29 24" Cast Iron Pipe 32 ft.
 Conc. Class A (1-2-4) 3.5 cu. yds
 Reinforcing Steel 58 lbs

NEW DRIVEWAY CULVERTS REQUIRED
 Sta. 209+90 Left 24" CGMP 34 ft.
 Conc. Class B (1-2-5) 1.5 cu. yds

FED. ROAD DIST. NO.	STATE	PROJECT	DISC.	SHEET	TOTAL
103-A	1928	17	73		



A.D. Cox
A.D. Wood
11/28
2128

A.A. Dore
C.A. Williams
3/11/28

B.M. No. 26 - Spike in Root of 14" Elm, Left of Sta. 216+59 - Elev. 318.04

SERIES F NO. 103 A
SHEET NO. 17 OF 73

18

R.D. Doc
 A.D. Wood
 11/27
 11/28

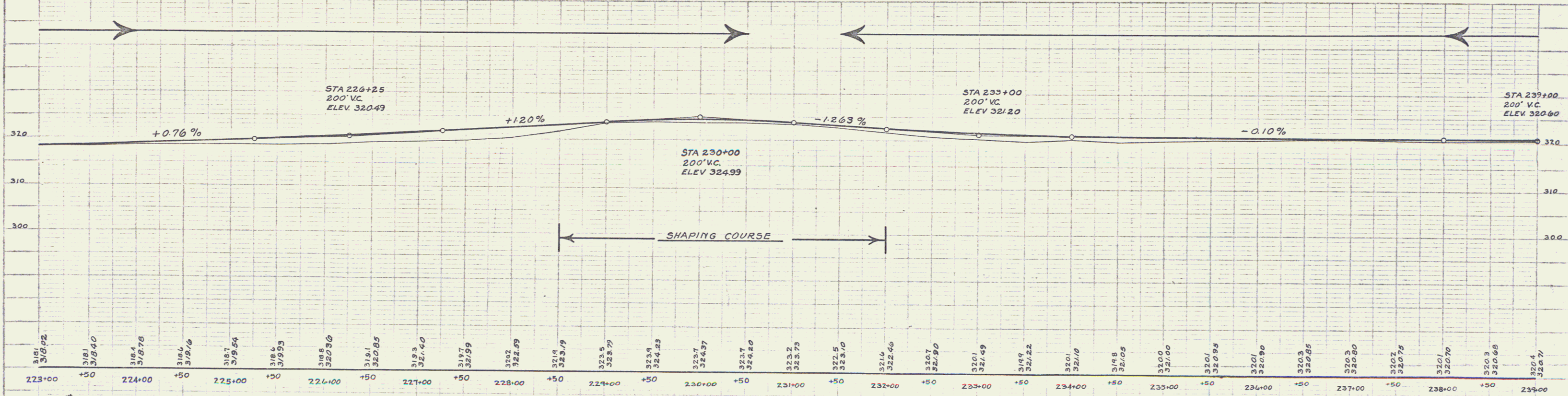
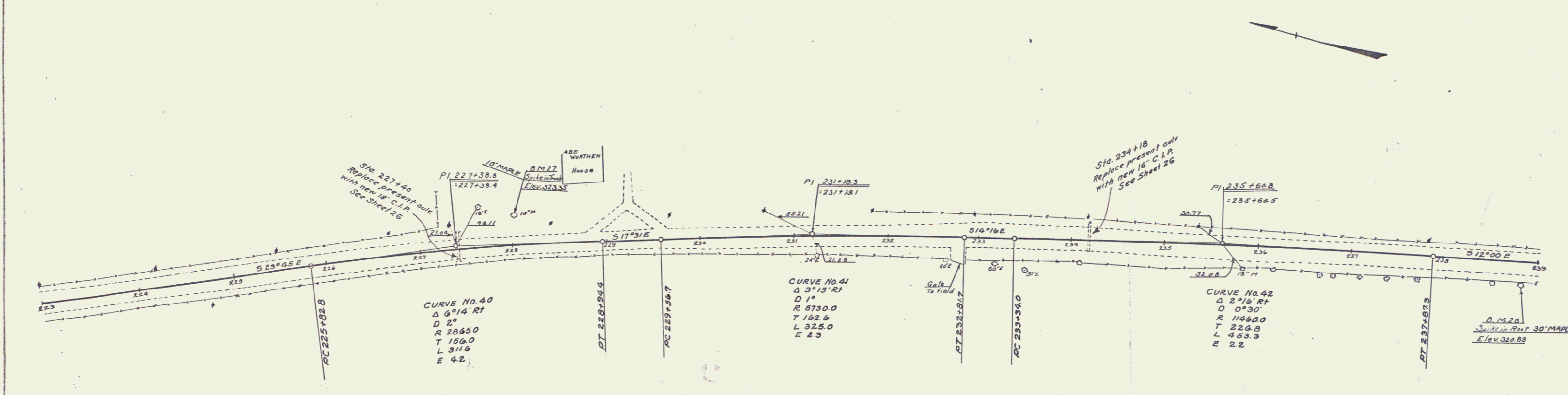
A.A. Doc
 J.A. Williams
 11/28

WOOD GUARD RAIL REQUIRED
 ON LEFT
 STA. 227+28 TO STA. 227+52 LENGTH 24 FT.
 " 234+06 TO " 234+30 " 24 FT.
 ON RIGHT
 STA. 234+06 TO STA. 234+30 LENGTH 24 FT.

CABLE GUARD RAIL REQUIRED
 ON RIGHT
 STA. 227+28 TO STA. 232+24 LENGTH 496 FT.

NEW CULVERTS REQUIRED
 Sta. 227+40 18" Cast Iron Pipe 36 ft.
 Conc. Class B (1-2 1/4-S) 3.1 cu yds
 Reinforcing Steel 33 lbs
 Sta. 234+18 16" Cast Iron Pipe 32 ft.
 Conc. Class B (1-2 1/4-S) 2.7 cu yds.
 Reinforcing Steel 33 lbs

FED. ROAD DIST. NO.	STATE	FISCAL YEAR	SHEET NO.	TOTAL SHEETS
103-A	1928	18	73	



223+00	318.1	318.1	318.4	318.6	318.7	318.4	318.8	318.1	319.3	319.7	320.2	320.1	320.5	320.2	320.5	320.0	320.1	320.3	320.3	320.2	320.1	320.3	320.4
+50			+50				+50																

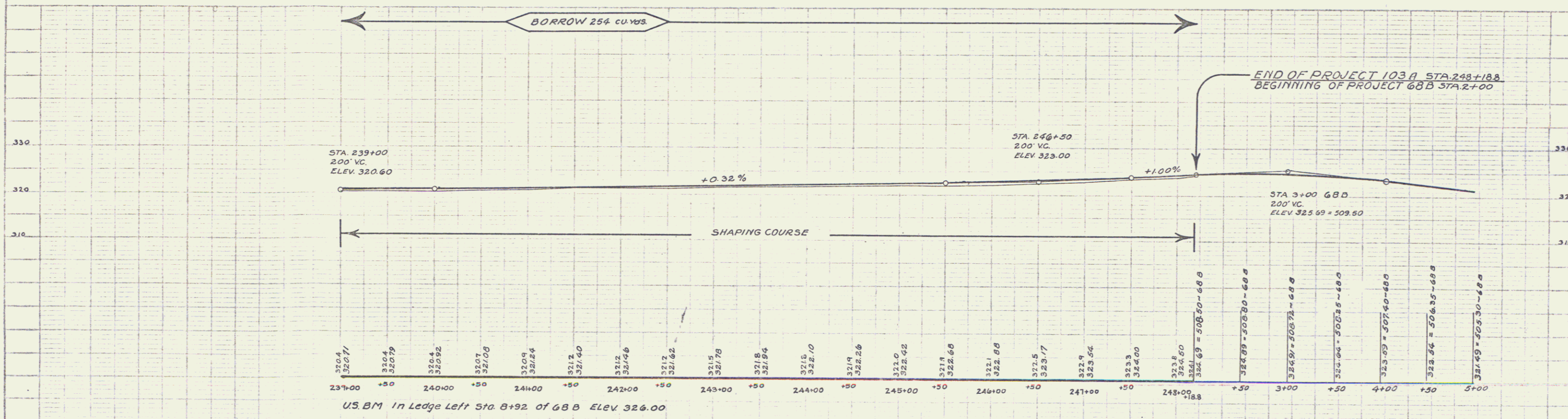
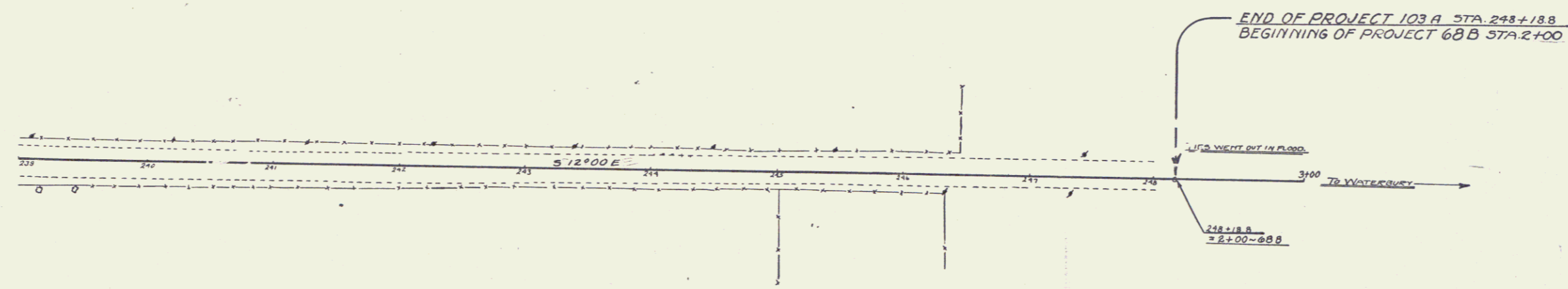
B.M. 27 SPIKE IN TRUNK OF 10' MAPLE LT. STA. 228+00 ELEV 323.35
 B.M. 28 SPIKE IN ROOT OF 30' MAPLE RT. STA. 235+82 ELEV 320.89

SERIES F No. 103 A
 SHEET NO. 18 OF 73

FED. ROAD DIST. NO.	STATE	FED. AID PROJ. NO.	FISCAL YEAR	SHEET NO.	TOTAL SHEETS
7	VA	703-A	1920	19	73

FILED
 DATE
 PROJECT NO.
 SHEET NO.
 DRAWN BY
 CHECKED BY
 APPROVED BY

A.A.D.C.
 J.A. Williams
 3/1/28



SERIES F No. 103 A
SHEET NO. 19 OF 73