

R.D. Doc
 A.D. Wood
 11/27
 11/28

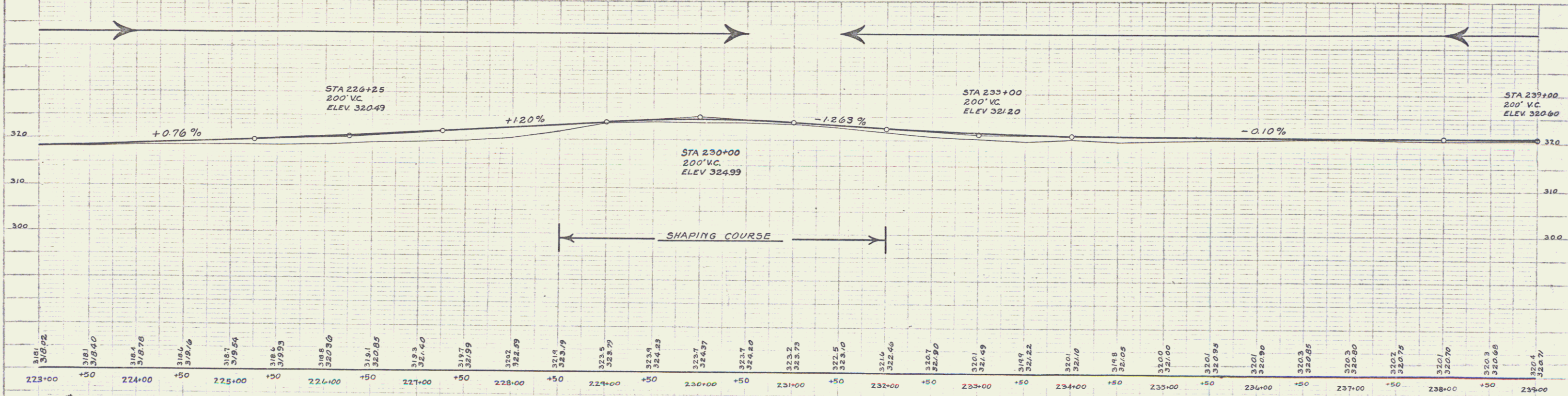
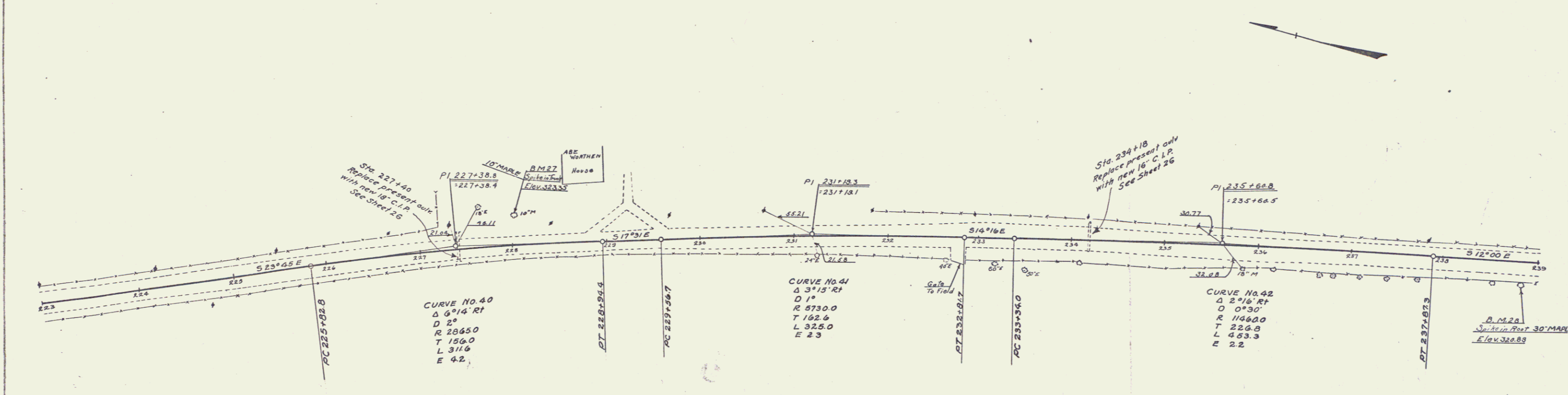
A.A. Doc
 J.A. Williams
 11/28

WOOD GUARD RAIL REQUIRED
 ON LEFT
 STA. 227+28 TO STA. 227+52 LENGTH 24 FT.
 " 234+06 TO " 234+30 " 24 FT.
 ON RIGHT
 STA. 234+06 TO STA. 234+30 LENGTH 24 FT.

CABLE GUARD RAIL REQUIRED
 ON RIGHT
 STA. 227+28 TO STA. 232+24 LENGTH 496 FT.

NEW CULVERTS REQUIRED
 Sta. 227+40 18" Cast Iron Pipe 36 ft.
 Conc. Class B (1-2 1/4-S) 3.1 cu yds
 Reinforcing Steel 33 lbs
 Sta. 234+18 16" Cast Iron Pipe 32 ft.
 Conc. Class B (1-2 1/4-S) 2.7 cu yds.
 Reinforcing Steel 33 lbs

| | | | | |
|---------------------|-------|-------------|-----------|--------------|
| FED. ROAD DIST. NO. | STATE | FISCAL YEAR | SHEET NO. | TOTAL SHEETS |
| 103-A | 1928 | 18 | 73 | |



B.M. 27 SPIKE IN TRUNK OF 10' MAPLE LT. STA. 228+00 ELEV 323.35
 B.M. 28 SPIKE IN ROOT OF 30' MAPLE RT. STA. 235+82 ELEV 320.89

SERIES F No. 103 A
 SHEET NO. 18 OF 73

19