

WOOD GUARD RAIL REQUIRED
ON LEFT
STA. 141+49 TO STA 141+73 LENGTH 24 FT.
" 147+81 TO " 148+05 " 24 FT.
ON RIGHT
STA 147+81 TO STA 148+05 LENGTH 24 FT.

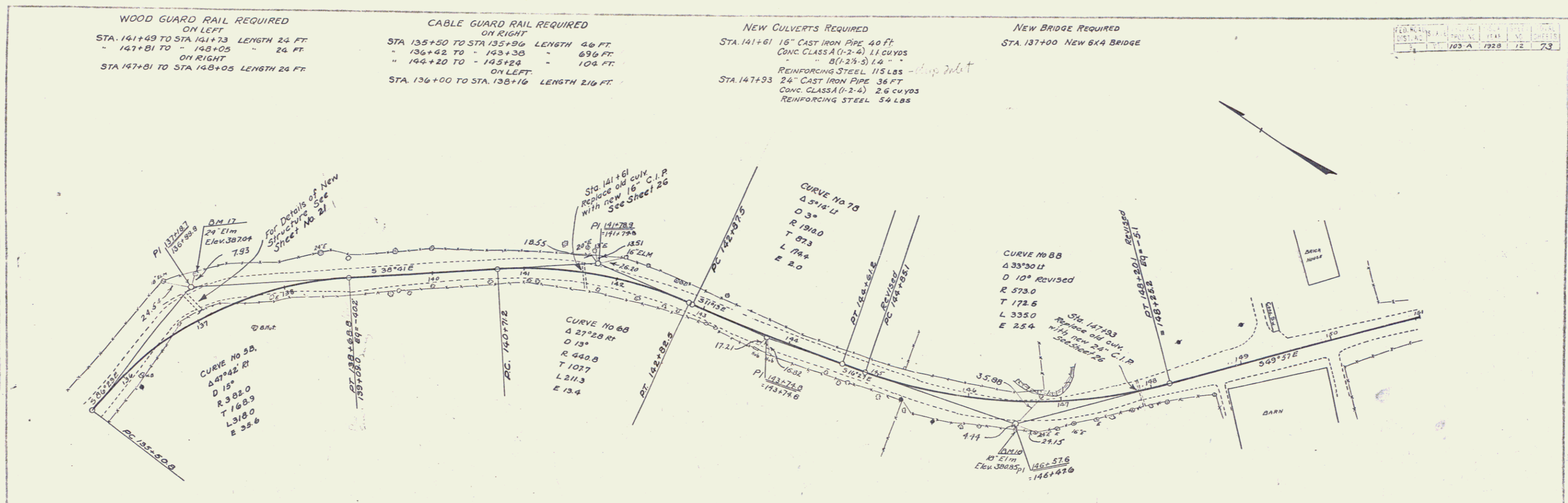
CABLE GUARD RAIL REQUIRED
ON RIGHT
STA 135+50 TO STA 135+96 LENGTH 46 FT.
" 136+62 TO " 143+38 " 69 FT.
" 144+20 TO " 145+24 " 104 FT.
ON LEFT
STA. 136+00 TO STA. 138+16 LENGTH 216 FT.

NEW CULVERTS REQUIRED
STA. 141+61 16" CAST IRON PIPE 40 FT.
CONC. CLASS A (1-2-4) 11 CU YDS
" " B (1-2 1/2-5) 1.4 "
REINFORCING STEEL 115 LBS
STA. 147+93 24" CAST IRON PIPE 36 FT.
CONC. CLASS A (1-2-4) 2.6 CU YDS
REINFORCING STEEL 54 LBS

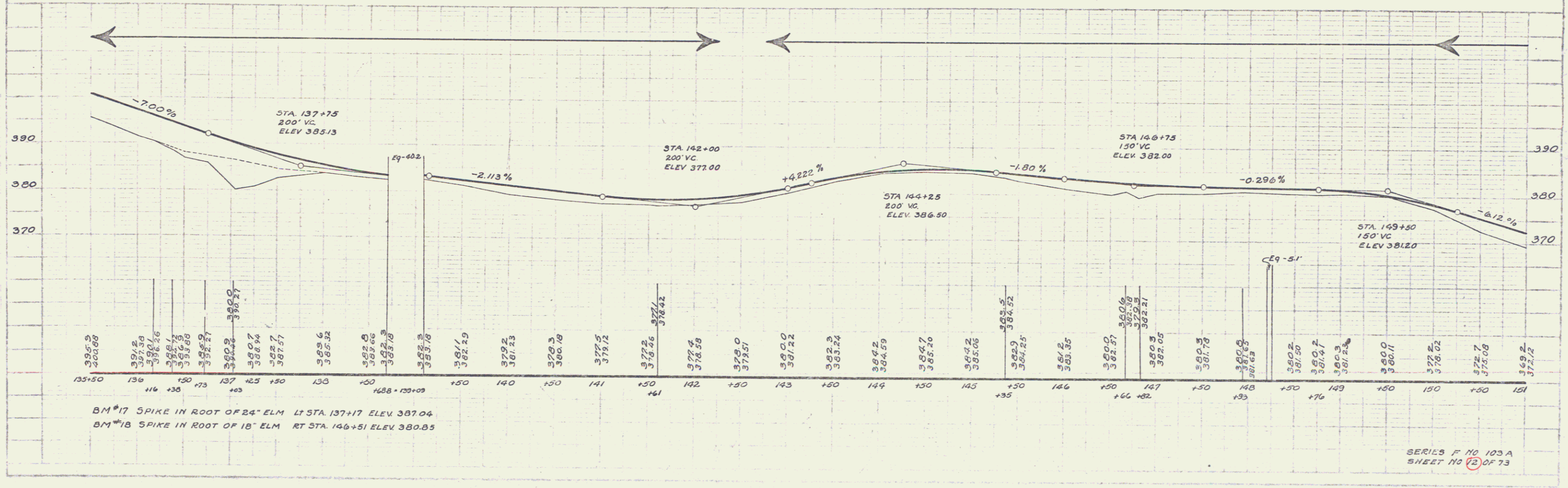
NEW BRIDGE REQUIRED
STA. 137+00 NEW 6x4 BRIDGE

DATE	BY	SCALE	YEAR	SHEET
11/22	AD WOOD	1" = 40'	1928	73

A. D. WOOD
11/22
2/122



A. D. WOOD
11/22
2/122



BM #17 SPIKE IN ROOT OF 24" ELM LT STA. 137+17 ELEV 387.04
BM #18 SPIKE IN ROOT OF 18" ELM RT STA. 146+51 ELEV 380.85

SERIES F NO 103 A
SHEET NO 72 OF 73