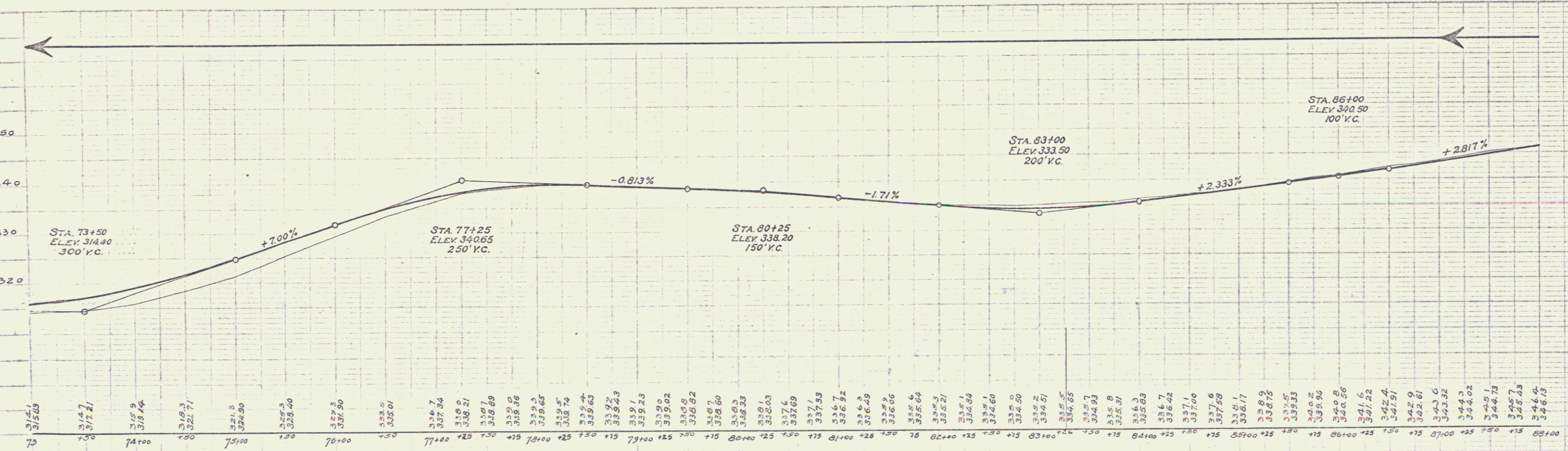
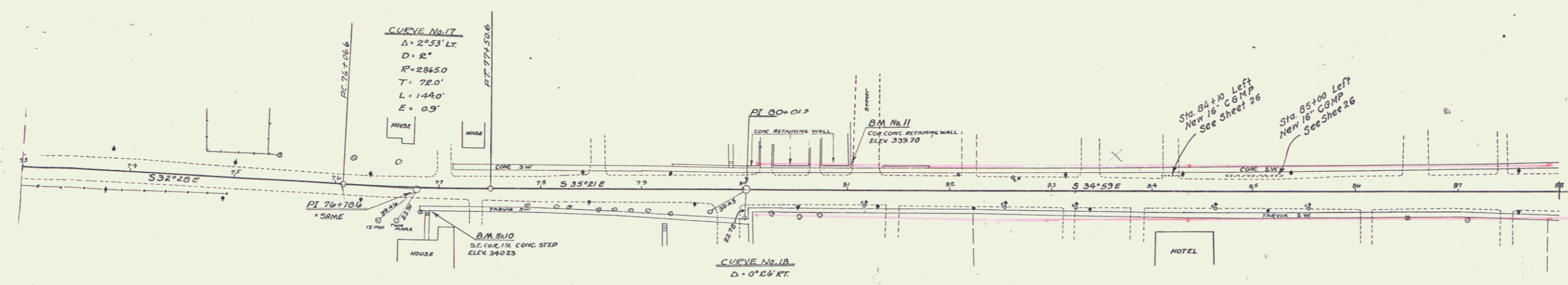


CABLE GUARD RAIL REQUIRED
ON RIGHT
STA. 73+00 TO STA. 74+98 LENGTH 198 FT.

CHANGE ELEVATIONS OF CATCH BASINS @
ITEM 77

DRIVEWAY CULVERTS REQUIRED
Sta 84+10 Left 16" C.G.M.P. 16 ft.
Concrete Class B (1-2 1/2-3) 1.1 cu. yds
Sta 85+00 Left 16" C.G.M.P. 32 ft.
Concrete Class B (1-2 1/2-3) 1.1 cu. yds

ED. NO.	STATE	FED. A. D.	SCALE	SHEET	TOTAL
103-A	1929	8	73		



BM. 10 - SE CORNER CONCRETE STEP RT. OF STA. 76+85 ELEV. 340.23
BM. 11 - CORNER CONCRETE P.W. LT. OF STA. 81+04 339.70

SERIES F. NO. 103 A
SHEET NO. 8 OF 73

9