

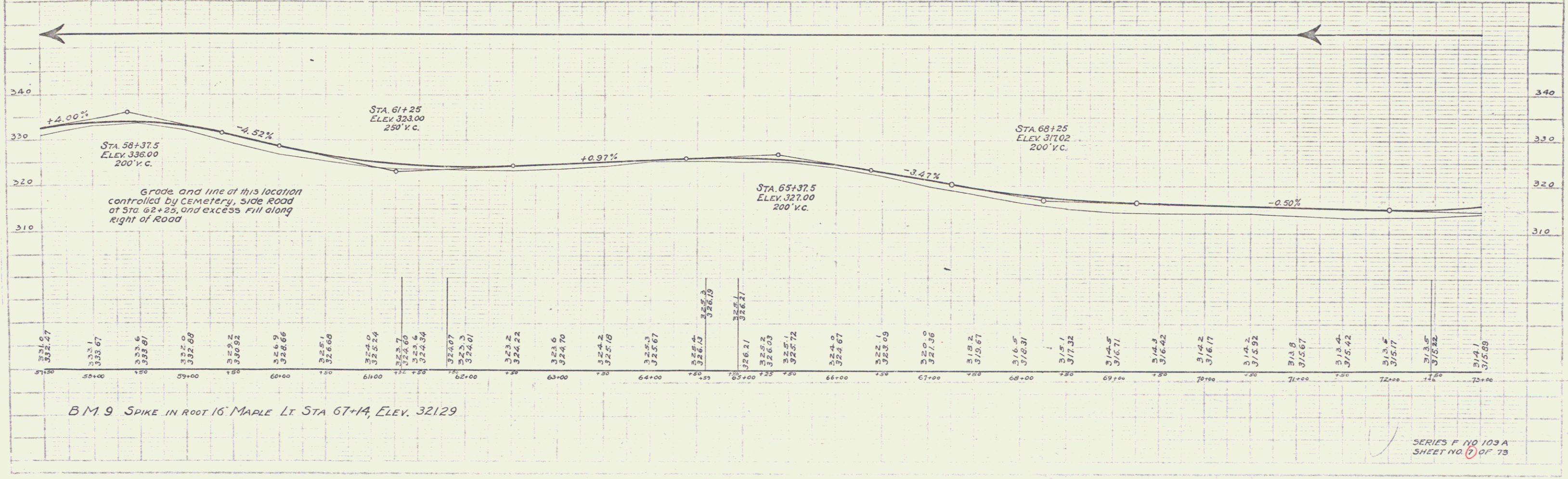
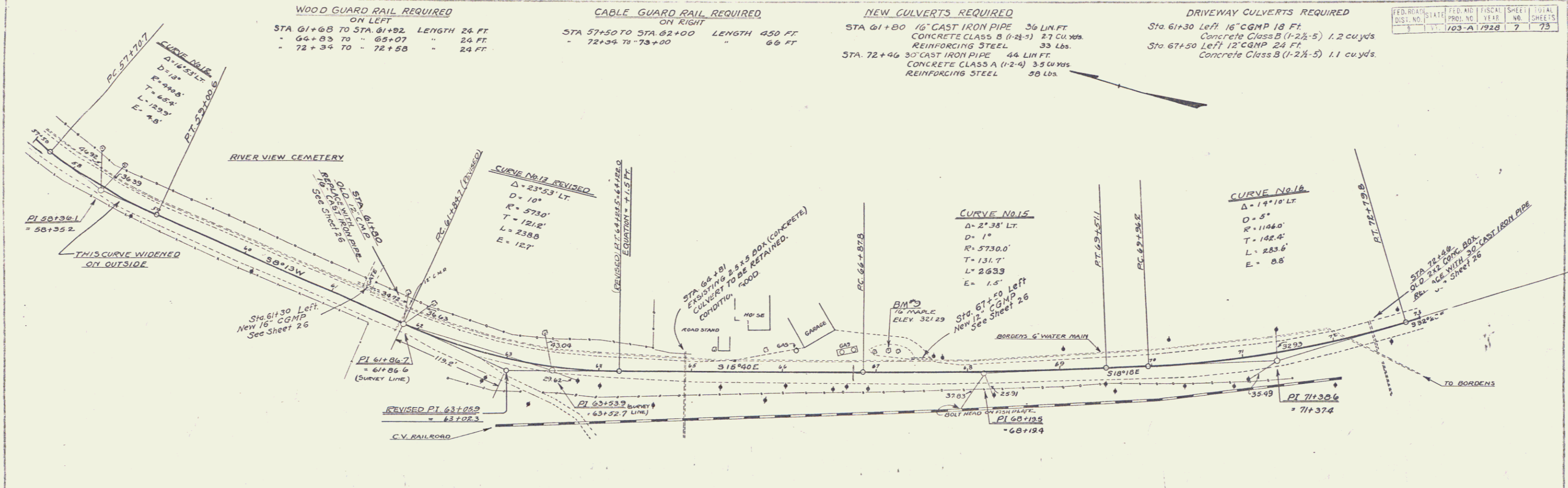
FED. ROAD DIST. NO.	STATE	PROJ. NO.	FISCAL YEAR	SHEET NO.	TOTAL SHEETS
3	VT	103-A	1928	7	73

WOOD GUARD RAIL REQUIRED ON LEFT
 STA 61+68 TO STA 61+92 LENGTH 24 FT.
 - 64+83 TO - 65+07 " 24 FT.
 - 72+34 TO - 72+58 " 24 FT.

CABLE GUARD RAIL REQUIRED ON RIGHT
 STA 57+50 TO STA 62+00 LENGTH 450 FT.
 - 72+34 TO - 73+00 " 66 FT.

NEW GULVERTS REQUIRED
 STA 61+80 16" CAST IRON PIPE 36 LIN. FT.
 CONCRETE CLASS B (1-2 1/2-5) 27 cu. yds.
 REINFORCING STEEL 33 lbs.
 STA 72+46 30" CAST IRON PIPE 44 LIN. FT.
 CONCRETE CLASS A (1-2-4) 35 cu. yds.
 REINFORCING STEEL 38 lbs.

DRIVEWAY CULVERTS REQUIRED
 Sta 61+30 Left 16" CGMP 18 FT.
 Concrete Class B (1-2 1/2-5) 1.2 cu. yds.
 Left 12" CGMP 24 FT.
 Concrete Class B (1-2 1/2-5) 1.1 cu. yds.



SERIES F NO 103 A
 SHEET NO. 7 OF 73

8