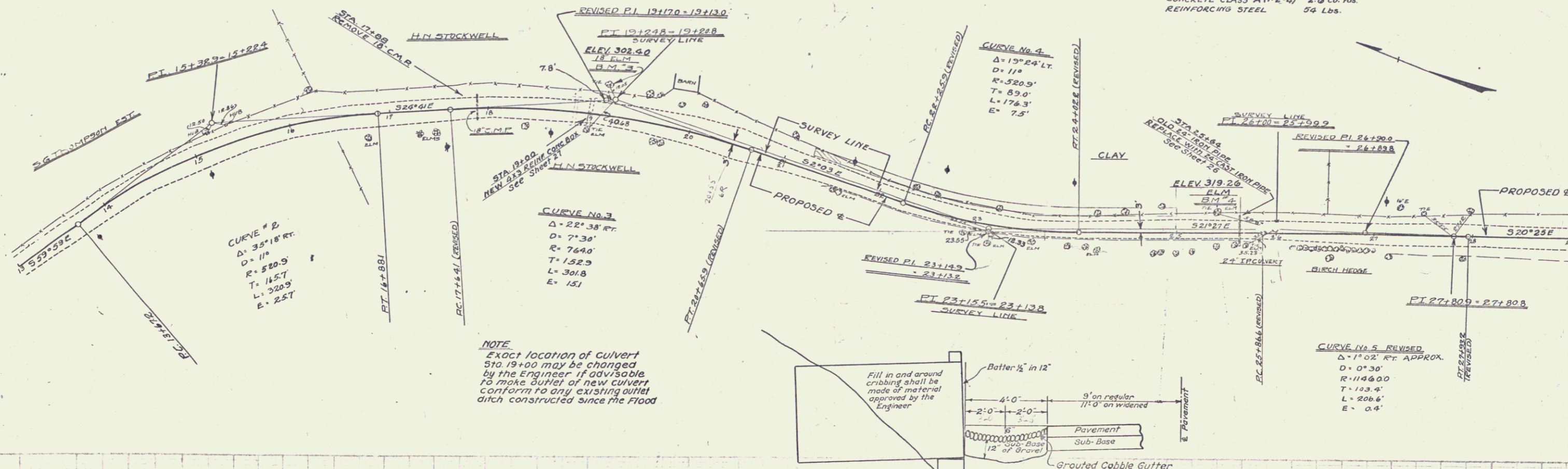


**WOOD GUARD RAIL REQUIRED**  
ON LEFT  
STA 18+80 TO STA 19+12 LENGTH 24 FT.  
STA 25+52 TO STA 25+76 " 24 FT.

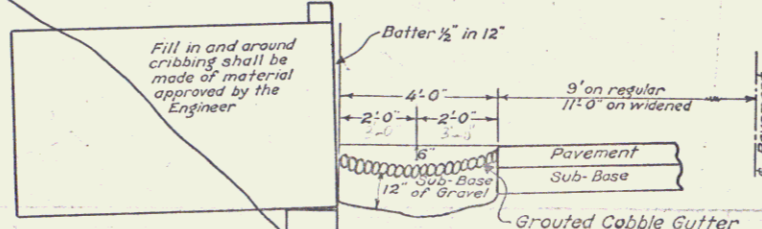
**CABLE GUARD RAIL REQUIRED**  
ON RIGHT  
STA 18+50 TO STA 26+34 LENGTH 784 FT.

**NEW CULVERTS REQUIRED**  
STA 19+00 AND REINFORCED CONCRETE BOX 32 LIN FT.  
CONCRETE CLASS A (1-2-4) 176 CU YDS.  
REINFORCING STEEL 1150 LBS.  
STA 25+64 24" CAST IRON PIPE 52 LIN FT.  
CONCRETE CLASS A (1-2-4) 2.6 CU YDS.  
REINFORCING STEEL 54 LBS.

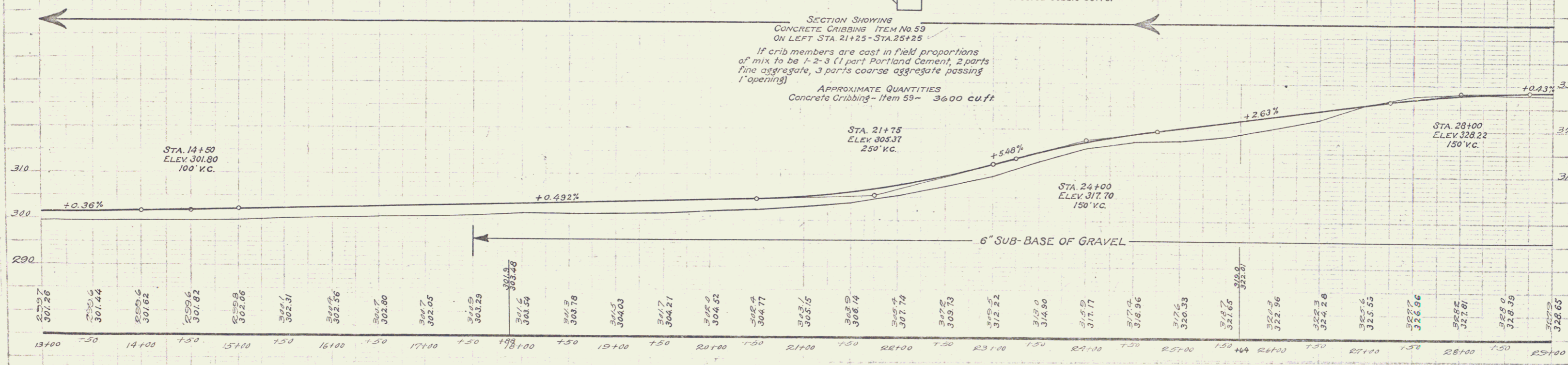
FED. ROAD DIST. NO.	STATE	FISCAL YEAR	SHEET NO.	TOTAL SHEETS
VT. 103 A		1928	73	



**NOTE**  
Exact location of culvert Sta. 19+00 may be changed by the Engineer if advisable to make outlet of new culvert conform to any existing outlet ditch constructed since the Flood.



**SECTION SHOWING CONCRETE CRIBBING ITEM NO 59 ON LEFT STA. 21+25 - STA. 25+25**  
If crib members are cast in field proportions of mix to be 1-2-3 (1 part Portland Cement, 2 parts fine aggregate, 3 parts coarse aggregate passing 1" opening)  
**APPROXIMATE QUANTITIES**  
Concrete Cribbing - Item 59 - 3600 cu ft



BM 3 SPIKE IN ROOT 18" ELM, LEFT STA. 19+12, ELEV 302.40  
BM 4 SPIKE IN ELM, LEFT STA. 25+42, ELEV 312.64