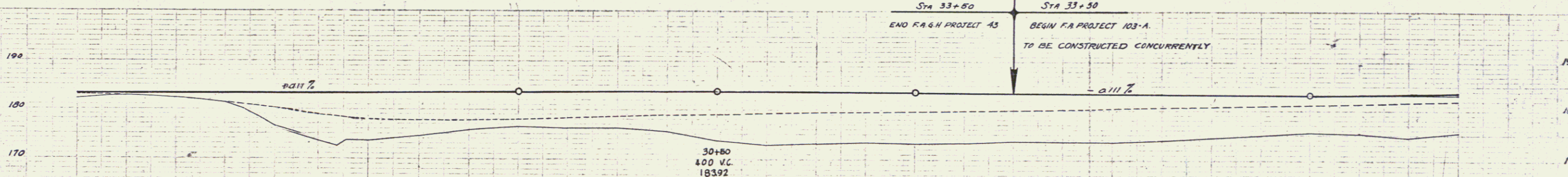
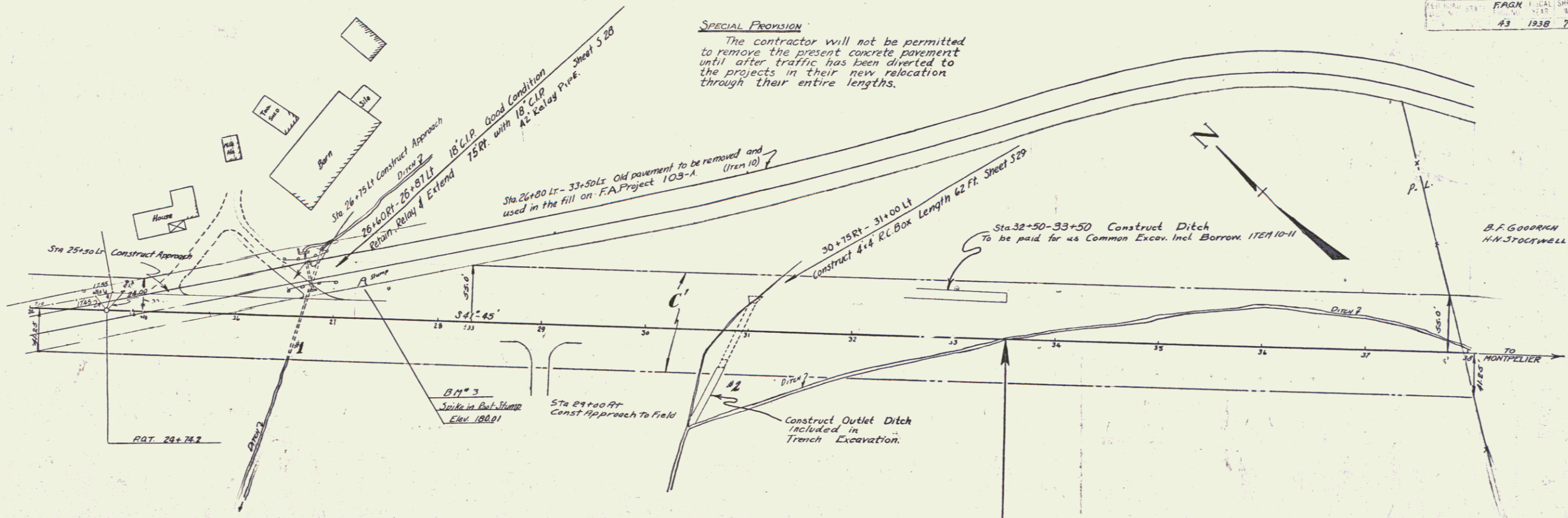
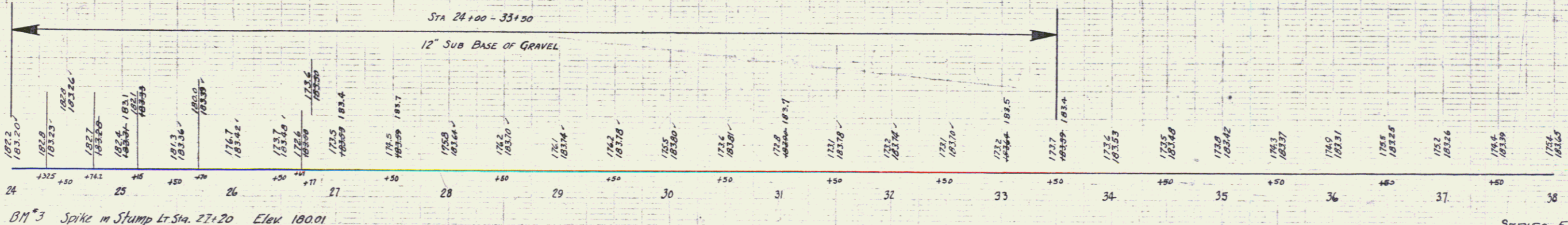


**SPECIAL PROVISION**  
 The contractor will not be permitted to remove the present concrete pavement until after traffic has been diverted to the projects in their new relocation through their entire lengths.



PARCEL	INSTRUMENT	DATE	GRANTOR	GRANTEE	RECORDED RICHMOND	REMARKS
A8C	N.O.	9737	M.D. FAIRFAX	M. DUNICK	STOFT 20	CULVERT STATION 20+20 to 20+30+75



B.M. 3 Spike in Stump Lt Sta. 27+20 Elev 180.01