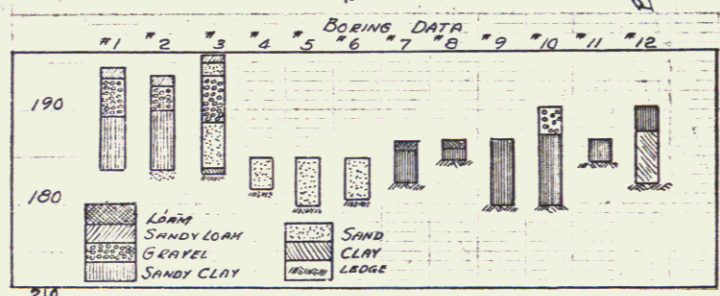
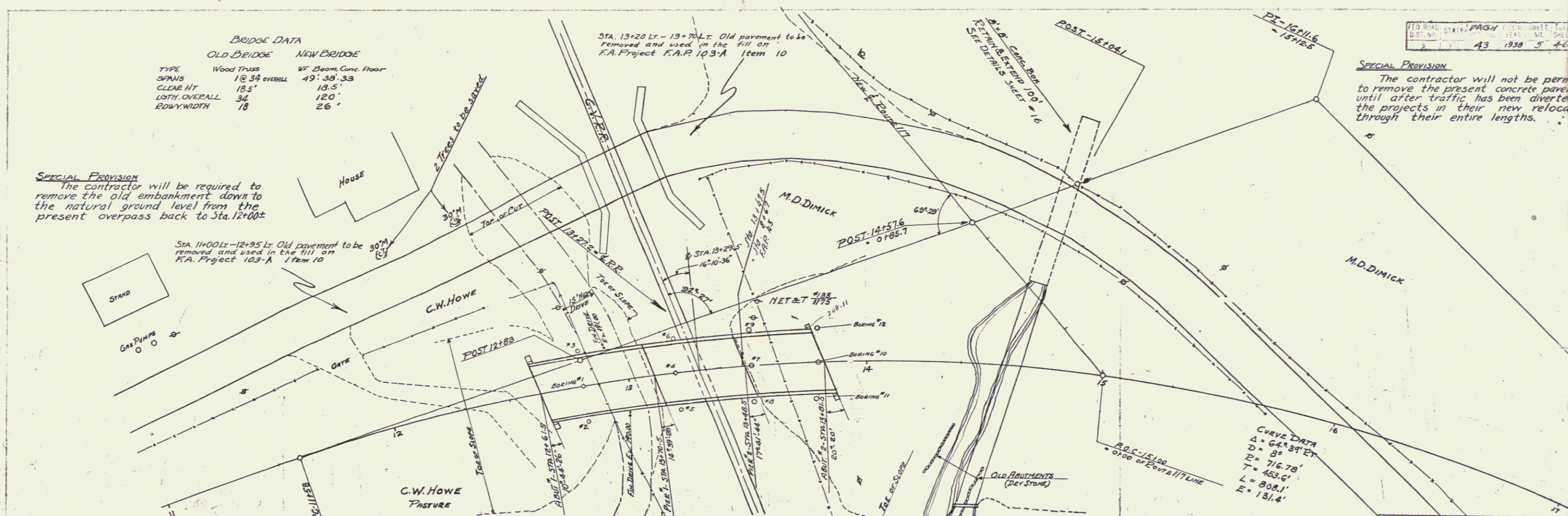


BRIDGE DATA

	OLD BRIDGE	NEW BRIDGE
TYPE	Wood Truss	WT Beam Conc. Floor
SPANS	1 @ 34' OVERALL	49' 39" 33'
CLEAR HT	18.5'	18.5'
LETH. OVERALL	34'	120'
EDG. WIDTH	18'	26'

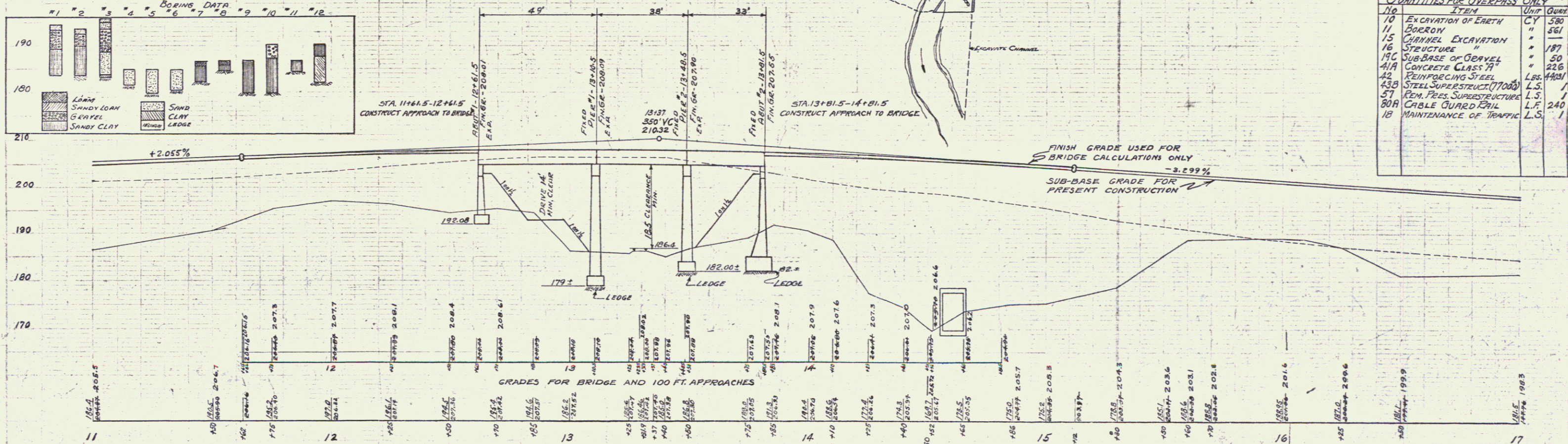
SPECIAL PROVISION
The contractor will be required to remove the old embankment down to the natural ground level from the present overpass back to Sta. 12+00.

SPECIAL PROVISION
The contractor will not be permitted to remove the present concrete pavement until after traffic has been relocated through their entire lengths.



QUANTITIES FOR OVERPASS ONLY

NO.	ITEM	UNIT	QTY
10	EXCAVATION OF EARTH	CY	580
11	BORING	"	854
15	CHANNEL EXCAVATION	"	187
16	STRUCTURE	"	50
19C	SUB-BASE OF GRAVEL	"	225
41A	CONCRETE CLASS 71	"	440
42	REINFORCING STEEL	LBS.	440
43B	STEEL SUPERSTRUCTURE (7000)	L.S.	1
57	REM. PILES SUPERSTRUCTURE	L.S.	240
80A	CABLE GUARD RAIL	L.S.	1
18	MAINTENANCE OF TRAFFIC	L.S.	1



CHECKERD HOUSE OVERPASS
RICHMOND
PAGE 43
SHEET No. 58 of 46