

PARCEL INSTRUMENT DATE	GRANTOR	GRANTEE	RECORDED BOOK PAGE DATE	REMARKS
A-B	W.D.	8-10-37	C.W. HOWE	ST. 20 97 8-14-37

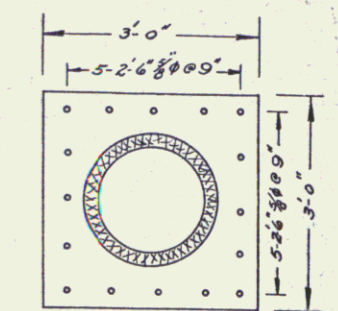
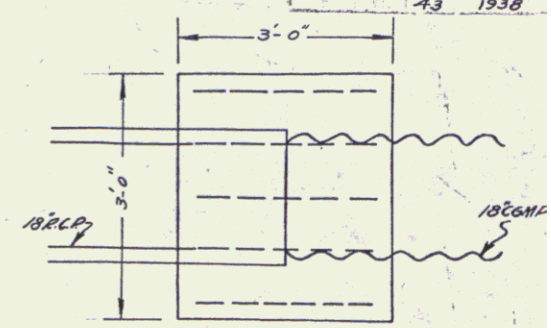
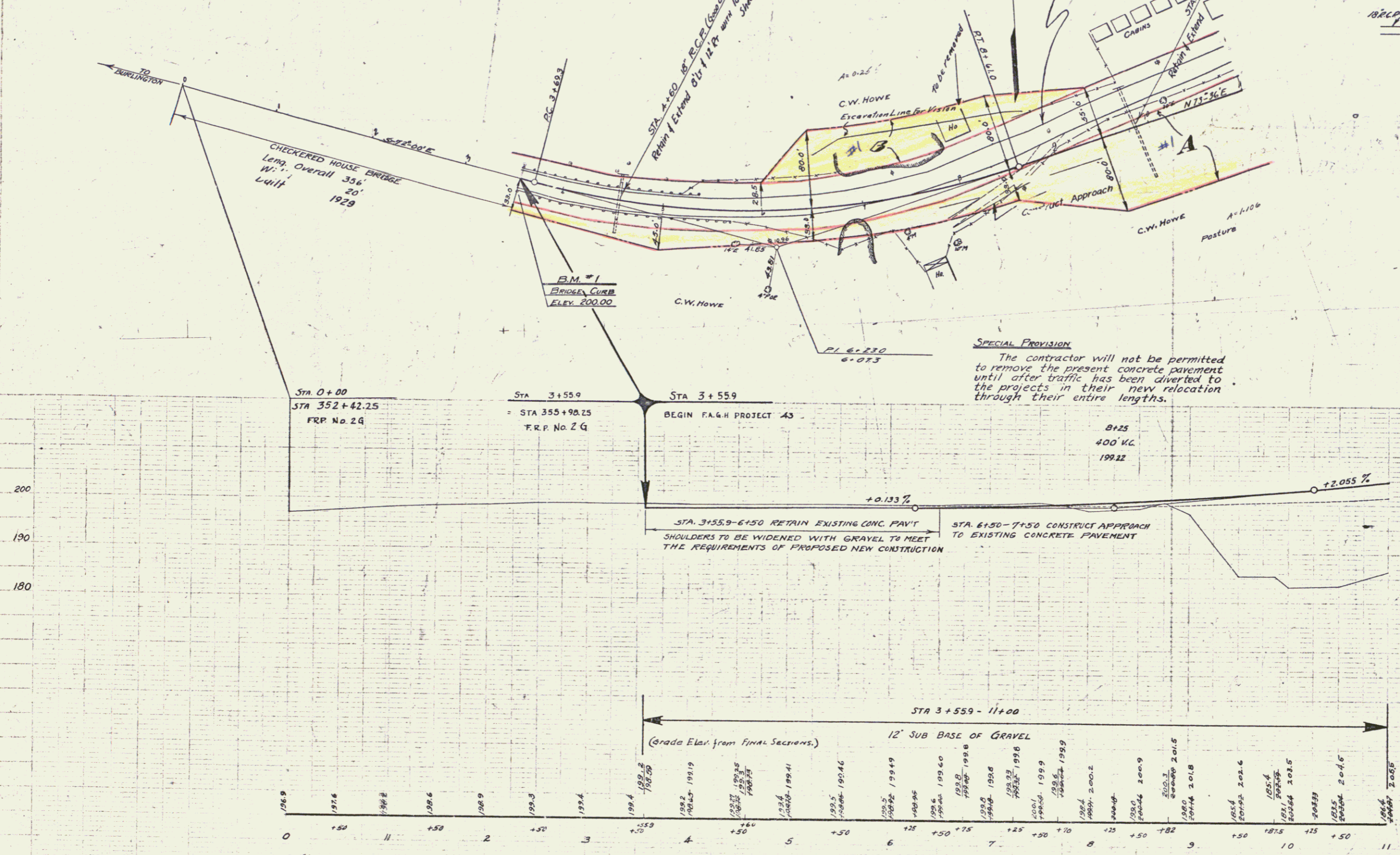
Δ 34° 24' Lt
 D 7'
 R 819.0
 T 253.7
 L 491.7
 E 303

NOTE: CULVERT STA. 4+60
 Old headers are to be left in place.
 Make connection by drilling around
 circumference of old pipe and removing
 enough concrete to make proper
 connection.

STA. 6+50 L.L. - 11+00 L.L. Old pavement to be
 removed and used in the fill on FA Project
 103-A Item 10

SLACK CONE
 TRACED
 5/17

LANE CONE
 5/17



PIPE COUPLING STA. 9+87.5 RT.
 CONC. CLASS A 1.0 CU. YD.
 REIN. STEEL 42 LBS.

SPECIAL PROVISION
 The contractor will not be permitted
 to remove the present concrete pavement
 until after traffic has been diverted to
 the projects in their new relocation
 through their entire lengths.

B.M. #1
 BRIDGE CURB
 ELEV. 200.00