

INDEX OF SHEETS

SHEET NO	TITLE PAGE
2	TYPICAL CROSS-SECTION OF IMPROVEMENT
3	PLAN AND PROFILE STA. 0+00 TO STA 15+00
4	15+00 - 30+00
5	30+00 - 45+00
6	45+00 - 59+00
7	59+00 - 73+00
8	73+00 - 82+85.8
9 TO 18	CROSS SECTIONS

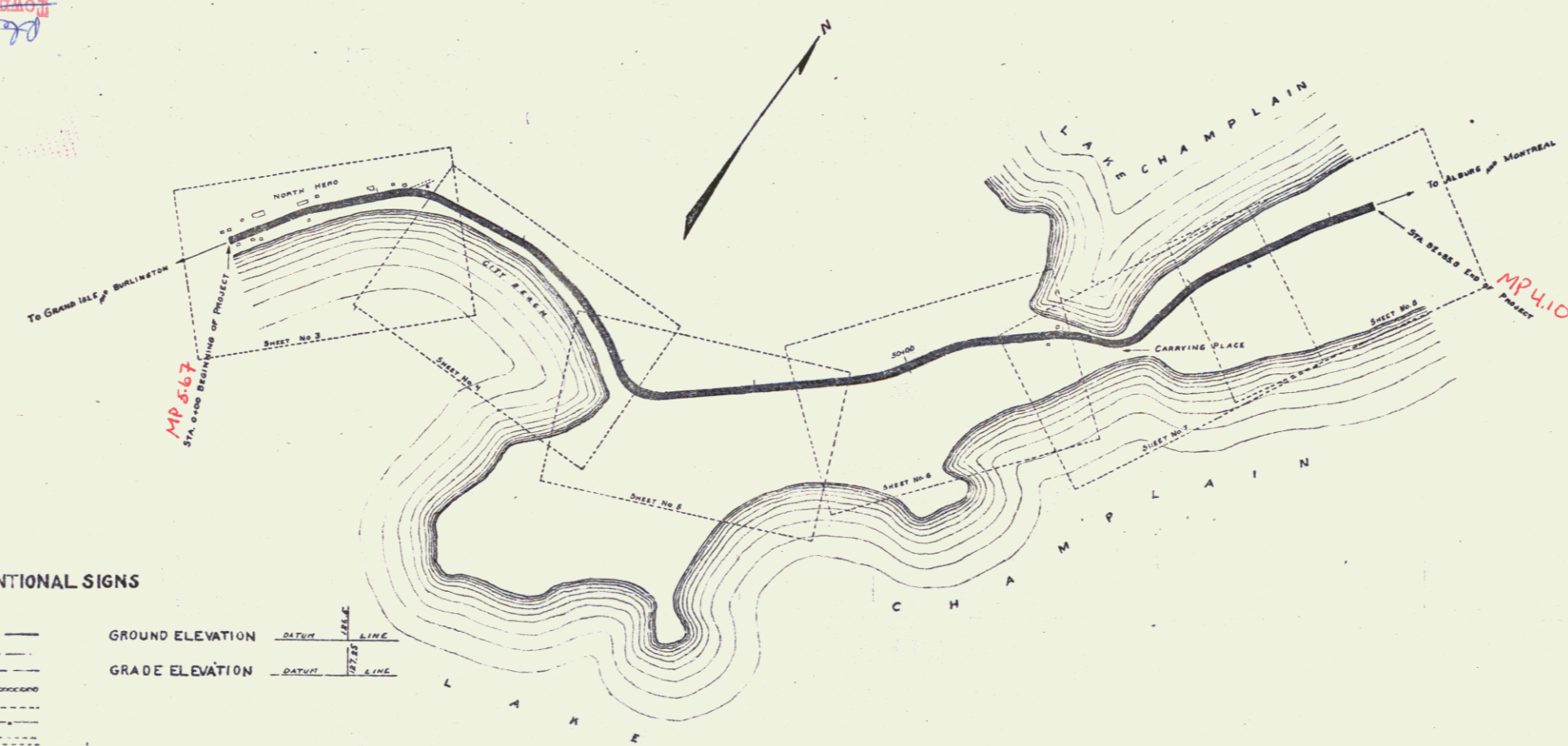
FED. ROAD DIST. NO.	STATE	FED. AID PROJ. NO.	FISCAL YEAR	SHEET NO.	TOTAL SHEETS
3	VT.			1	18

STATE OF VERMONT
 STATE HIGHWAY DEPARTMENT
 PLAN AND PROFILE OF PROPOSED
 STATE HIGHWAY
 FEDERAL AID PROJECT *Pin # 99K074*
TOWN OF NORTH HERO
 CITY BEACH ROAD *Rt. No. U.S. 2*
 FROM "IRVING HOUSE" 8276.5 FEET NORTHERLY



(To Be Returned To R.O.M. Division)
 Town of North Hero
 PERPETUAL
 TOWN FILE
 RIGHT-OF-WAY DIVISION

PLAN 1 IN. = 50 FEET
 PROFILE 1/8 IN. = 50 FEET VERT 1 IN. = 10 FEET
 CROSS SECTIONS 1 IN. = 5 FEET



- CONVENTIONAL SIGNS
- COUNTY LINE
 - TOWN LINE
 - FENCE LINE
 - STONE WALL
 - UNFENCED PROPERTY
 - GUARD RAIL
 - TRAVELED WAY
 - RAILROAD
 - RETAINING WALL
 - CENTER & SURVEY LINE
 - CULVERT
 - DROP INLET
 - TROLLEY POLE
 - POWER POLE
 - TELEPHONE POLE
 - TREES
 - HEDGE

GROUND ELEVATION *DATE* *SCALE* *LINE*

GRADE ELEVATION *DATE* *SCALE* *LINE*

CURVE DATA

- DEFLECTION ANGLE Δ
- DEGREE OF CURVE D
- RADIUS OF CURVE R
- TANGENT DISTANCE T
- LENGTH OF CURVE L
- EXTERNAL DISTANCE E
- POINT OF INTERSECTION P. I.
- POINT OF CURVE P. C.
- POINT OF TANGENT P. T.

LAYOUT 1 in. = 500 ft.

RECOMMENDED _____
 STATE ENGINEER

APPROVED _____
 GOVERNOR
 SUBMITTED BY ORDER OF THE STATE HIGHWAY BOARD

COMMISSIONER OF HIGHWAYS

RECOMMENDED _____
 DISTRICT ENGINEER
 BUREAU OF PUBLIC ROADS

RECOMMENDED FOR APPROVAL _____
 CHIEF ENGINEER - BUREAU OF PUBLIC ROADS

APPROVED _____
 DIRECTOR - BUREAU OF PUBLIC ROADS

3/26/1923
Proj: F 118

Series *10* No. *10* Sheet *10*

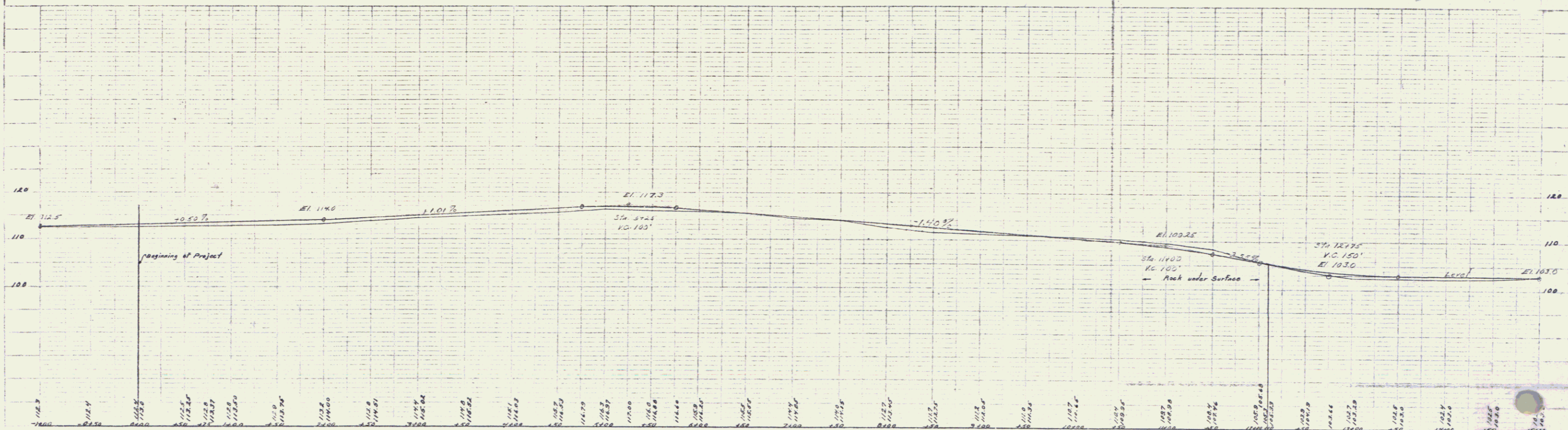
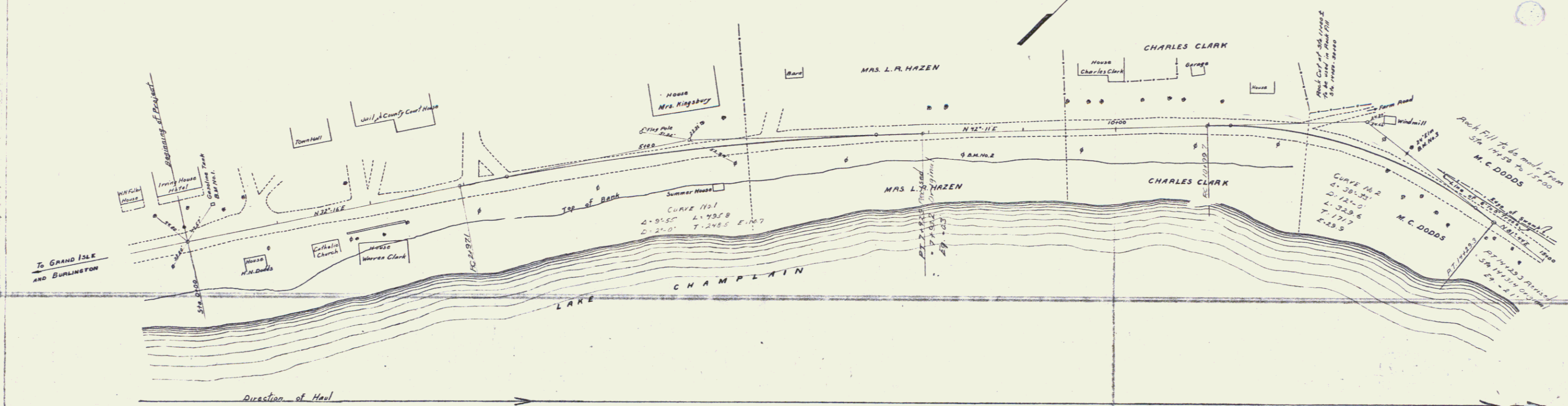
DIST # 8 Plans 1

GUARD RAIL REQUIRED ON LEFT
Sta. 13+08 To 15+00 Length 192ft.

CONCRETE RIP-RAP ON RIGHT
Sta. 14+00 To 15+00 Length 100ft.

TOTAL THIS SHEET 132ft.

NO.	DATE	BY	REVISION
1	11/17/10	J.P. Flinn	Original
2	11/17/10	J.P. Flinn	Revised
3	11/17/10	J.P. Flinn	Revised



B.M. No. 1 N.E. Corner of Gasoline Tank Foundation Left Sta. 0+41 Elev. 115.29
 B.M. No. 2 Spike in Telephone Pole Right Sta. 0+36 Elev. 111.95
 B.M. No. 3 Spike in 24 Elm Left Sta. 13+46 Elev. 103.43

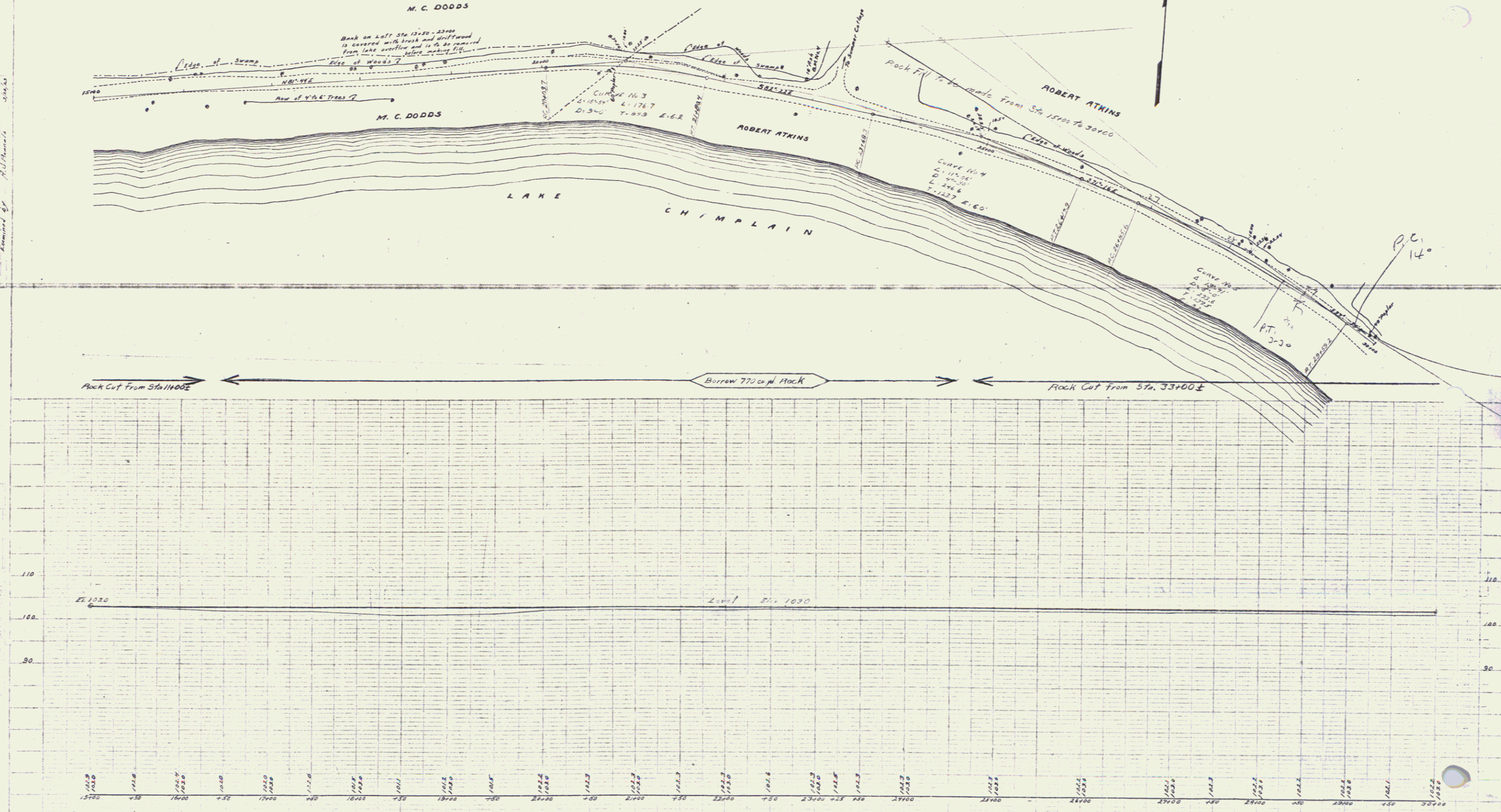
Sheet 3 of 10
 Series R. No. 110

2

GUARD RAIL REQUIRED
 ON LEFT
 Sta 15+00 to 22+44 Length 744ft.
 " 23+20 - 30+00 " 80 "
 TOTAL THIS SHEET 824ft.

CONCRETE RIP-RAP
 ON RIGHT
 Sta 15+00 to 30+00 Length 1500ft.

JOB NO.	STATE	FILE NO.	DATE	SCALE	TOTAL SHEETS
9	Vt.			4	10



M. C. DODDS
 ROBERT ATKINS
 LAKE CHIMPLAIN
 Edge of Swamp
 Rock Cut From Sta. 11+00±
 Borrow 770 cu yd Rock
 Rock Cut From Sta. 33+00±

M. C. DODDS
 ROBERT ATKINS
 LAKE CHIMPLAIN
 Edge of Swamp
 Rock Cut From Sta. 11+00±
 Borrow 770 cu yd Rock
 Rock Cut From Sta. 33+00±

Sheet 4 of 10
 Series No. 1710

GUARD RAIL REQUIRED
 ON LEFT
 Sta. 30+00 To 32+36 Length 236 Ft.
 " 43+36 " 43+60 " 24 "
 ON RIGHT
 Sta. 31+46 To 32+50 Length 104 Ft.
 " 43+36 " 43+60 " 24 "
TOTAL THIS SHEET 448 Ft.

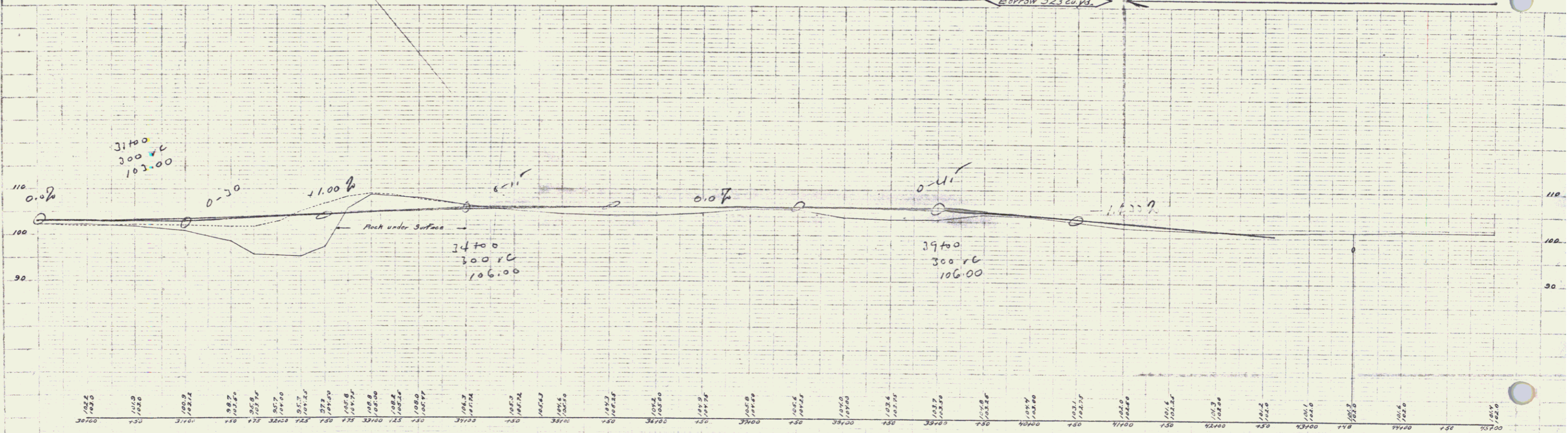
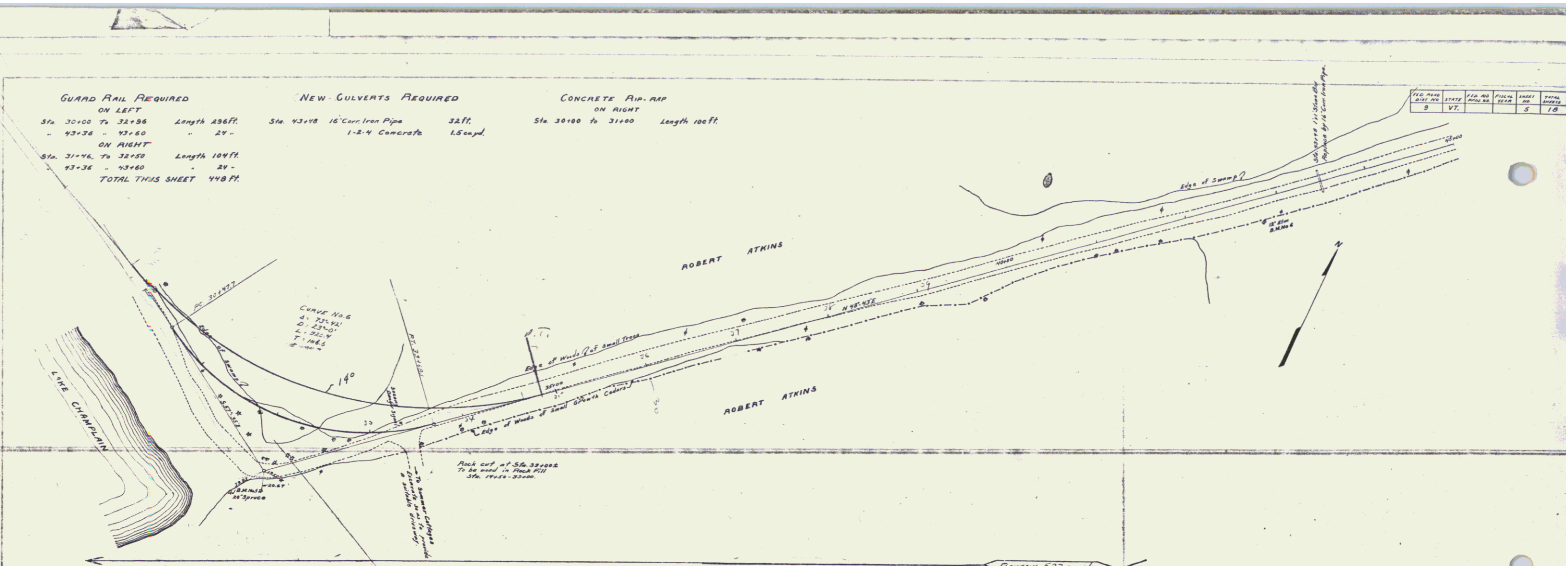
NEW CULVERTS REQUIRED
 Sta. 43+18 16" Cor. Iron Pipe 32 Ft.
 " 1-2-4 Concrete 1.5 cu yd.

CONCRETE PAVEMENT
 ON RIGHT
 Sta. 30+00 To 31+00 Length 100 Ft.

FILE NO.	DATE	BY	REVISION
9	VT.		3 10

Prepared by
 Checked by
 Drawn by

Stationing
 Elevation
 Profile



B.M. No. 5 Spike in 20" Spruce Right Sta. 31+00 Elev. 104.76
 B.M. No. 6 Spike in 12" Elm Right Sta. 42+78 Elev. 102.12

Sheet 5 of 18
 Series No. 5760

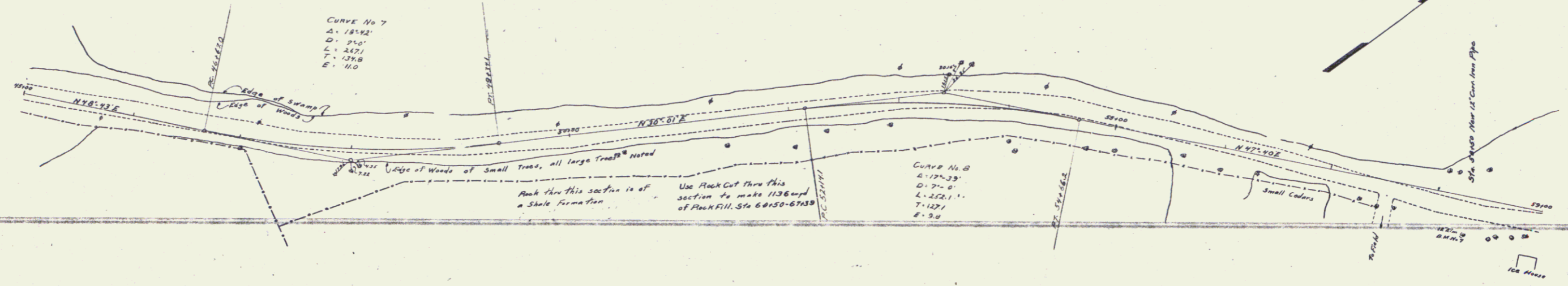
5

GUARD RAIL REQUIRED
 ON LEFT
 Sta. 58+38 to 58+62 Length 24ft
 ON RIGHT
 Sta. 58+38 to 58+62 Length 24ft
TOTAL THIS SHEET 48ft

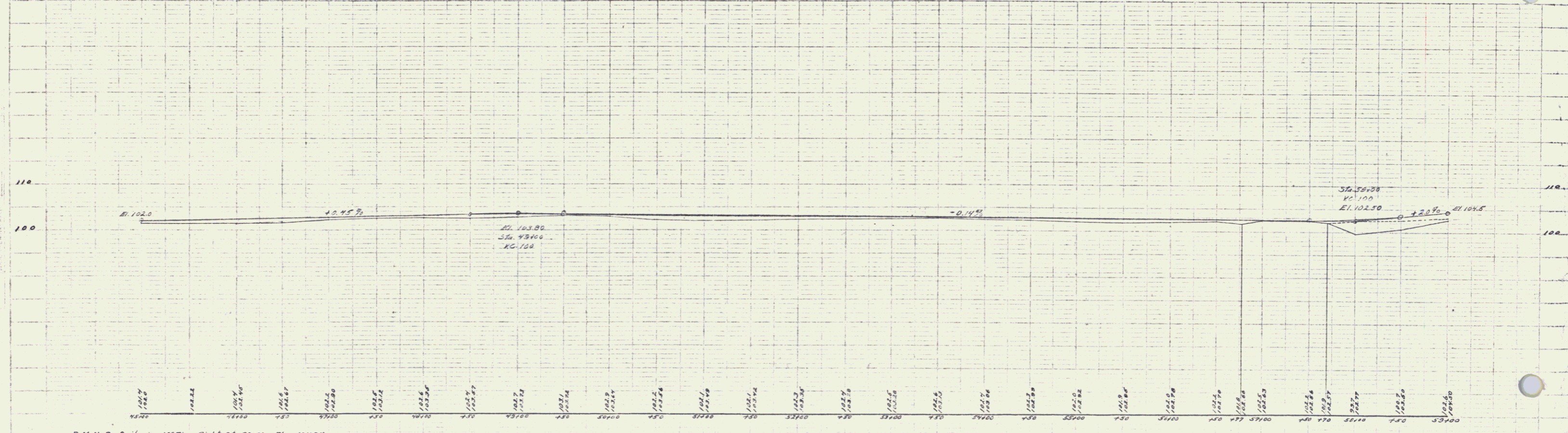
NEW CULVERTS REQUIRED
 Sta. 58+50 12" Corr. Iron Pipe 30ft
 12" Concrete 10cuyd

FED. ROAD DIST. NO.	STATE	FED. ROAD DIST. NO.	SECTION	SHEET NO.	TOTAL SHEETS
9	VT			6	18

Checked by: J. J. [unclear]
 Examined by: J. J. [unclear]



← Borrow 315 cu yd →



B.M. No. 7 Spike in 12" Elm Right Sta. 58+21 Elev. 101.84

Sheet 6 of 18
 Series F.M. Filed

6

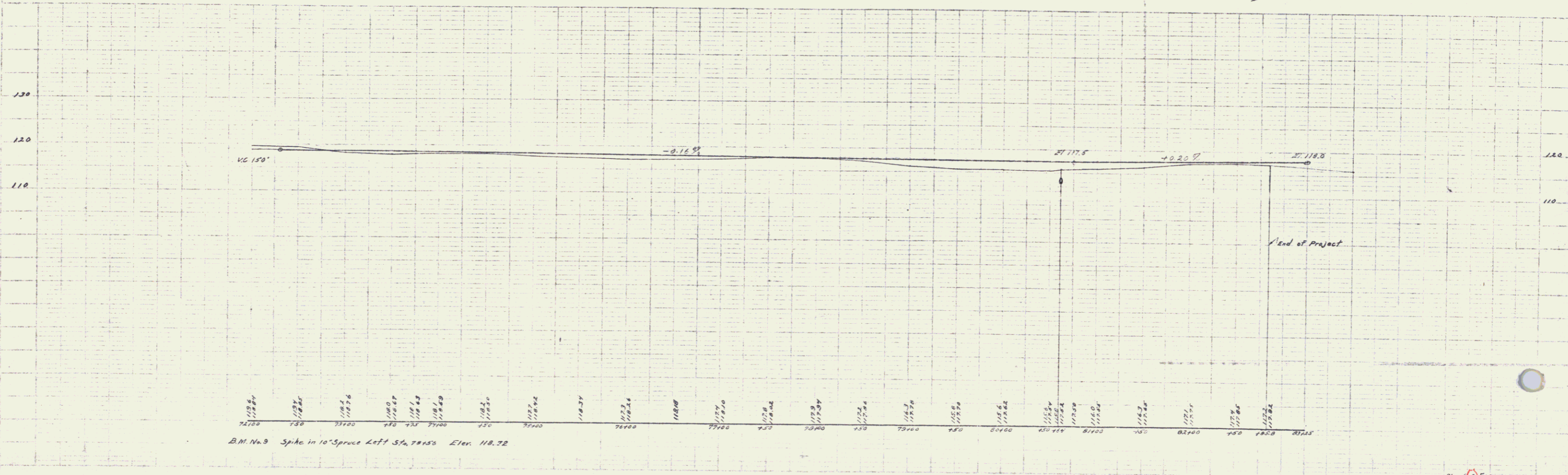
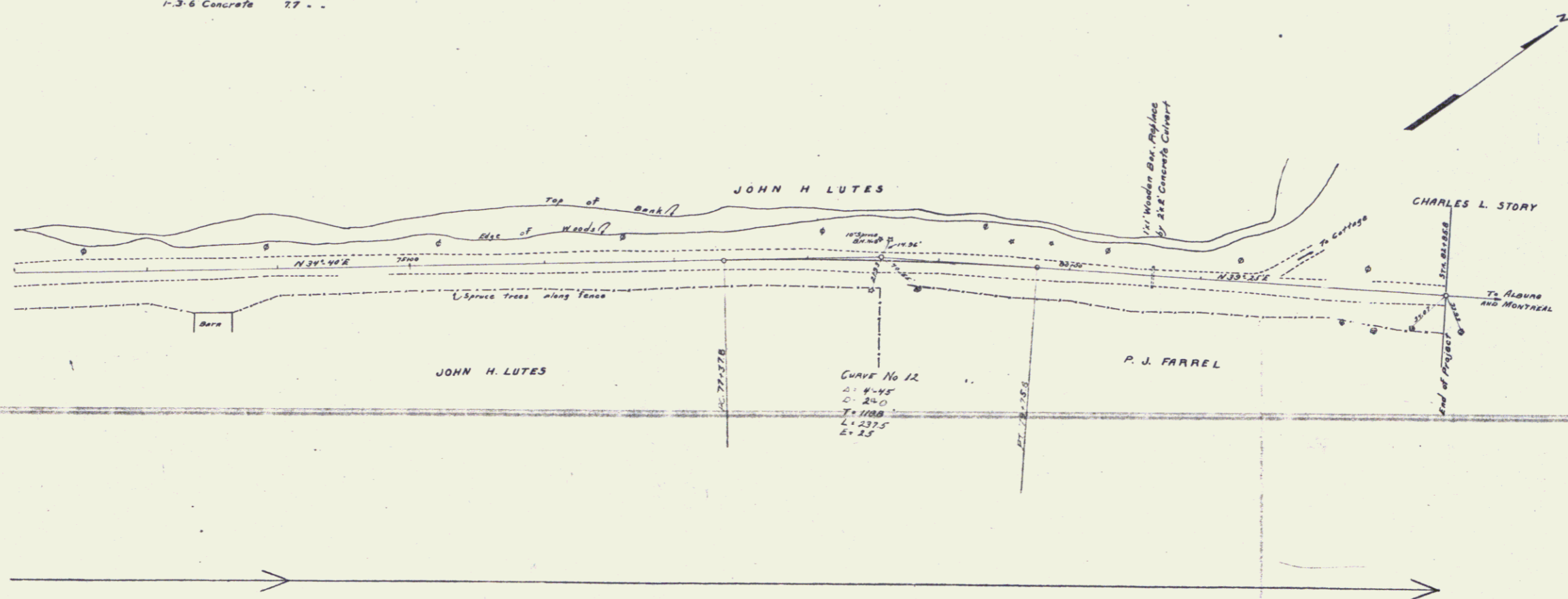
GUARD RAIL REQUIRED
 ON LEFT
 Sta. 80+52 To 80+76 Length 24ft.
 ON RIGHT
 Sta. 80+52 To 80+76 Length 24ft.
TOTAL THIS SHEET 48ft.

NEW CULVERTS REQUIRED
 Sta. 80+64 2x2 Concrete Culvert
 1-2.4 Concrete 5.9 cuyd.
 1-3.6 Concrete 27 -

JOB NO.	STATE	FILE NO.	FILE NO.	SHEET	TOTAL
9	VT.			8	10

Approved by: [Signature]
 Checked by: [Signature]

Checked by: [Signature]
 Approved by: [Signature]



Sheet 8 of 10
 Series F No. 1710

8