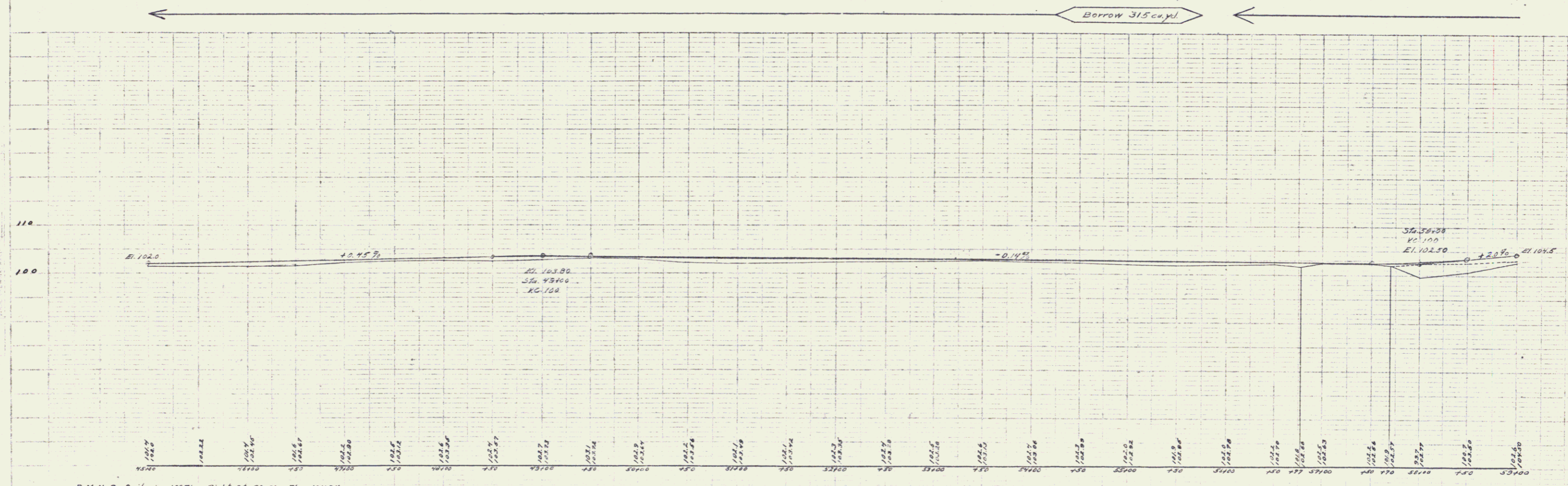
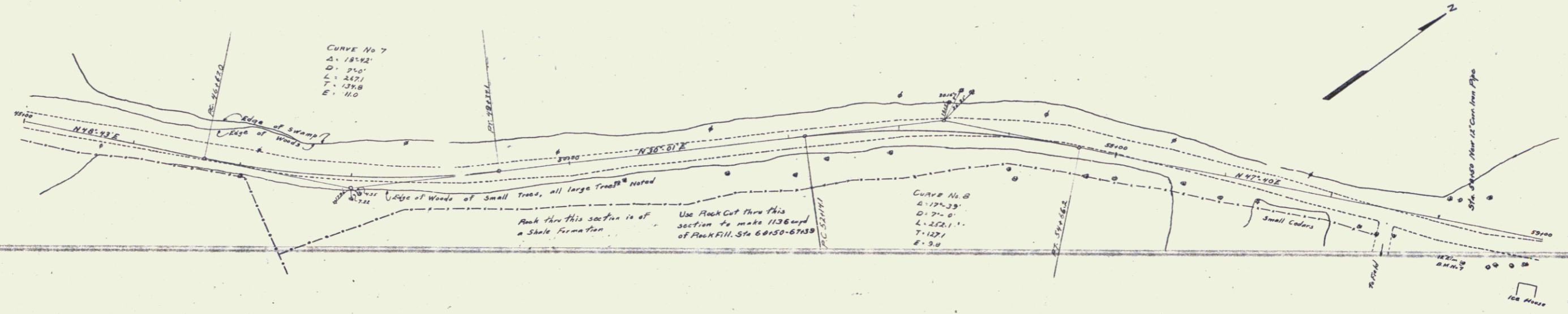


GUARD RAIL REQUIRED
 ON LEFT
 Sta. 58+38 to 58+62 Length 24ft.
 ON RIGHT
 Sta. 58+38 to 58+62 Length 24ft.
TOTAL THIS SHEET 48ft.

NEW CULVERTS REQUIRED
 Sta. 58+50 12" Corr. Iron Pipe 30ft.
 12" Concrete 10cuyd.

FED. ROAD DIST. NO.	STATE	FED. ROAD DIST. NO.	SECTION	SHEET NO.	TOTAL SHEETS
9	VT			6	18

Checked by: J. M. [unclear]
 Examined by: J. M. [unclear]



B.M. No. 7 Spike in 12" Elm Right Sta. 58+21 Elev. 109.84

Sheet 6 of 18
 Series F. M. Filed

6