

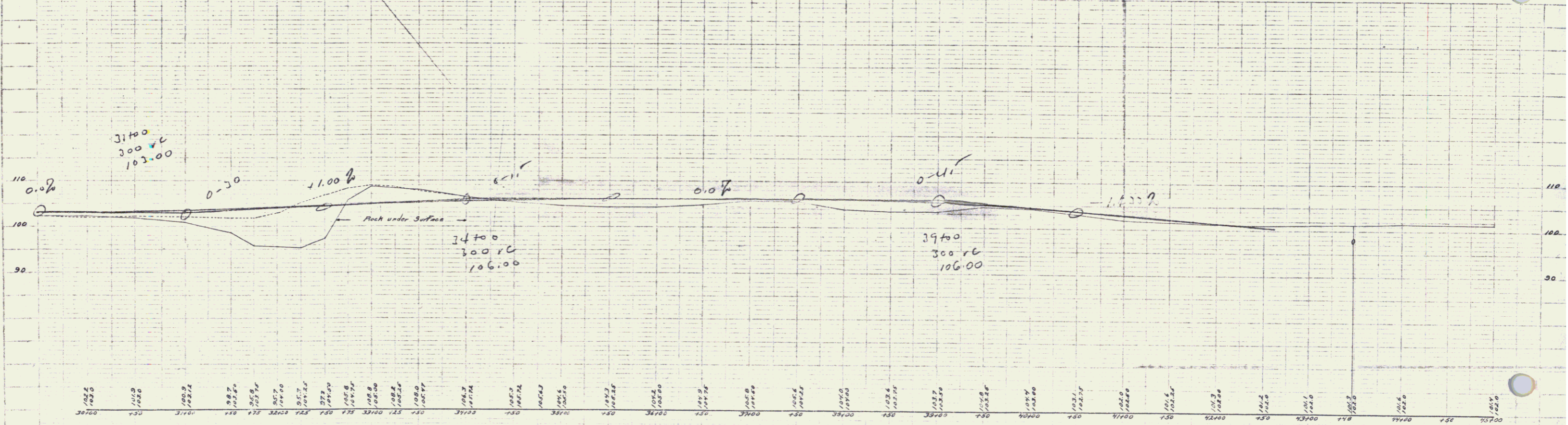
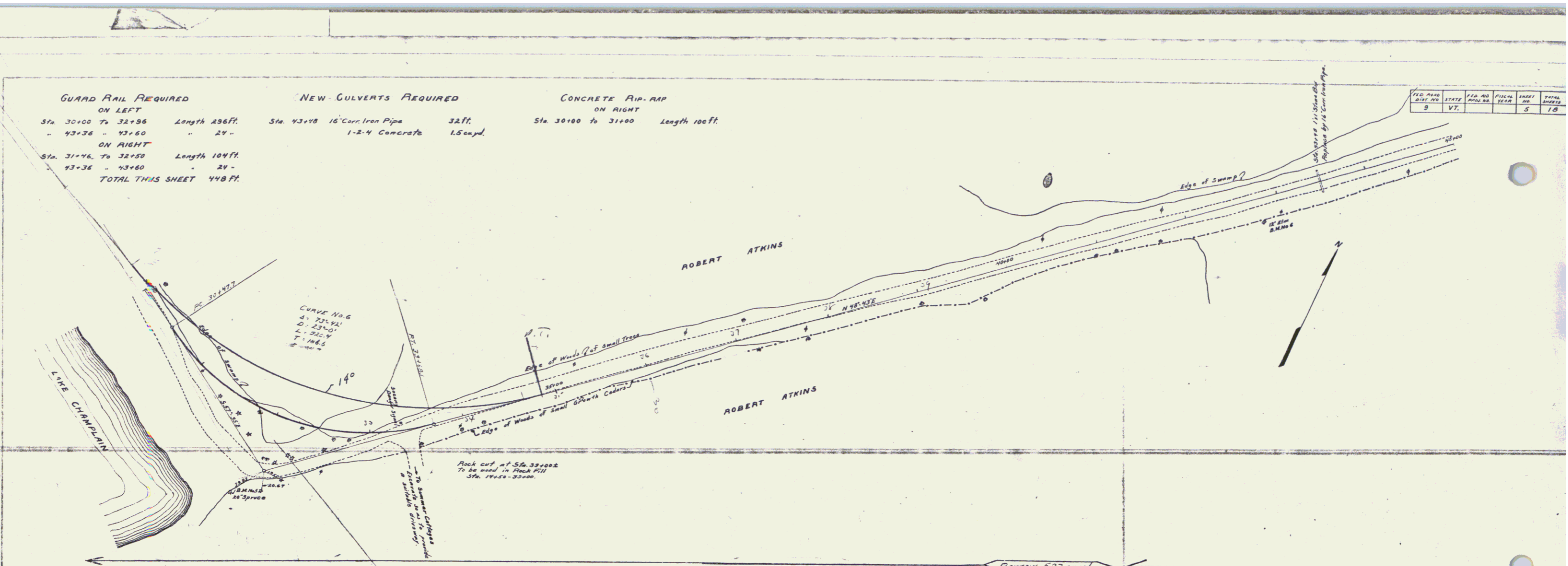
GUARD RAIL REQUIRED
 ON LEFT
 Sta. 30+00 To 32+36 Length 236 Ft.
 " 43+36 " 43+60 " 24 "
 ON RIGHT
 Sta. 31+46 To 32+50 Length 104 Ft.
 43+36 " 43+60 " 24 "
TOTAL THIS SHEET 448 FT.

NEW CULVERTS REQUIRED
 Sta. 43+18 16" Cor. Iron Pipe 32 Ft.
 " 1-2-4 Concrete 1.5 cu yd.

CONCRETE PAV. REQ.
 ON RIGHT
 Sta. 30+00 To 31+00 Length 100 Ft.

FILE NO.	DATE	BY	REVISION
9	VT.		3 10

Checked by: [Signature]
 Drawn by: [Signature]



B.M. No. 5 Spike in 20" Spruce Right Sta. 31+00 Elev. 104.76
 B.M. No. 6 Spike in 12" Elm Right Sta. 42+78 Elev. 102.12

Sheet 5 of 18
 Series No. 5760

5