

INDEX OF SHEETS

SHEET NO.	TITLE	PAGE
1	TYPICAL CROSS SECTION OF IMPROVEMENT	21/2" CRUSHED STONE MIXED-IN-PLACE SURFACE COURSE WITH CUTBACK ASPHALT, ITEM 3-43.
2	BANKING AND WIDENING TABLES	
3	EARTHWORK SHEETS	
4-6	QUANTITY SHEET	
7	PLAN AND PROFILE	
8-11	SUBSTRUCTURE, DETAILS OF ABUTMENTS 1 AND 2	
12	PIER 1	
13	PIER 2	
14	PIER 3	
15	PIER 4	
16	PIER 5	
17	PIER 6	
18	PIER 7	
19	SUPERSTRUCTURE, DETAILS OF SPAN 1 AND 7	
20	SPAN 1	
21	SPAN 2	
22	SPAN 3	
23	SPAN 4	
24	SPAN 5 AND CANTILEVER	
25	CONTINUOUS SPANS	
26	SPAN 6	
27	SPAN 7	
28	MISCELLANEOUS DETAILS OF APPROACH SLAB & LADDER AND LIGHTS	
29	WOOD FENDERS, PIERS 3 AND 4	
30	STANDARD STRUCTURE SHEET SB-11 BARRICADES, SIGNS AND LIGHTS (BRIDGE)	
31	DETAILS OF FILTER BASIN	
32	STANDARD STRUCTURE SHEET S-40 BARRICADES, SIGNS AND LIGHTS (ROADWAY)	
33	S-46-45 BOUNDARY MARKER	
34	S-48-46 THREE CABLE GUARD RAIL	
35	S-53-48 PRECAST REINFORCED CONCRETE PIPE DROP INLET	
36-42	CROSS SECTIONS	
43	REINFORCING STEEL DETAILS FOR TOPS OF PIERS	

STATE OF VERMONT
STATE HIGHWAY DEPARTMENT

PLAN AND PROFILE OF PROPOSED
STATE HIGHWAY
FEDERAL PROJECT

TOWNS OF ALBURG-NORTH HERO
COUNTY OF GRAND ISLE
U. S. ROUTE 2 *Pin # 992072*

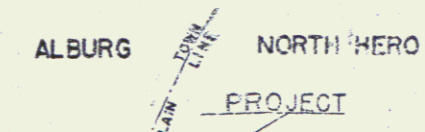
BEGINNING AT A POINT APPROXIMATELY 31 FEET NORTHWESTERLY OF THE ALBURG-NORTH HERO TOWN LINE AND EXTENDING SOUTHEASTERLY 2,030.4 FEET.

LENGTH OF ROADWAY 1,204.4 FEET = 0.228 MILE
LENGTH OF BRIDGE 826.0 FEET = 0.157 MILE
LENGTH OF PROJECT 2,030.4 FEET = 0.385 MILE

STANDARD STRUCTURE SHEETS APPROVED BY THE CHIEF ENGINEER, VERMONT STATE DEPARTMENT OF HIGHWAYS. -

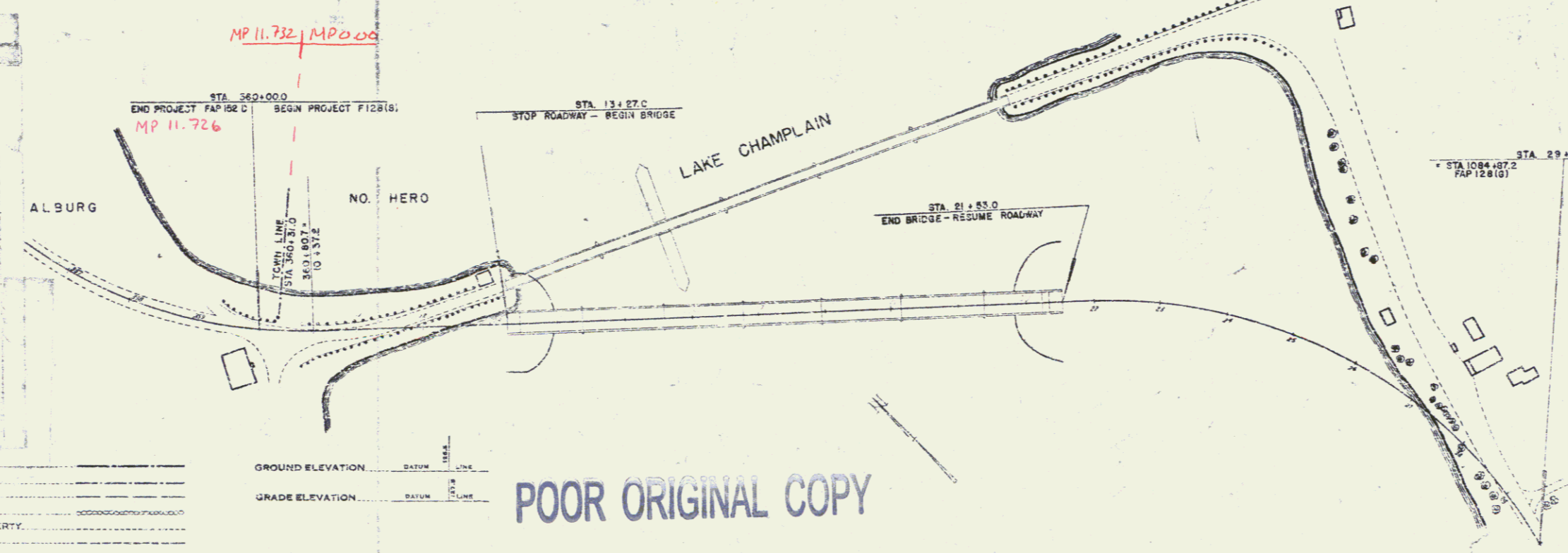
SB-11 DEC 18, 1945
S-40 FEB 28, 1949
S-46-45 FEB 28, 1949
S-48-46 MAY 13, 1946

FED. ROAD DIST. NO.	STATE	FISCAL YEAR	SHEET NO.	TOTAL SHEETS
9	Vt.	1948	1	42



U.S.G.S. MAP REFERENCE
ROUSE'S POINT QUADRANGLE
W 7 1/2" N 84 52
SCALE 1" = 1 MILE

Use the following sheets in connection with steel superstructure: 1, 9, 9 1/2, 10, 11, 12, 25, 26, 27, 28, 29, 30, 31, 32, 33, 34, 35, 36, 37, 38, 39, 40, 41, 42, inclusive.



RIGHT-OF-WAY DIVISION
TOWN FILE

PERPETUAL
of U.S. Rte. #2
(To Be Returned To R.O.W. Division)

APPROVED: 19 AUGUST 1949
H. E. Sargent
CHIEF ENGINEER
SUBMITTED BY ORDER OF THE STATE HIGHWAY BOARD

LEGEND

---	COUNTY LINE
---	TOWN LINE
---	FENCE LINE
---	STONE WALL
---	UNFENCED PROPERTY
---	GUARD RAIL
---	TRAVELED WAY
---	RAILROAD
---	RETAINING WALL
---	CENTER LINE
---	SURVEY LINE
---	CULVERT
---	DROP INLET
---	TROLLEY POLE
---	POWER POLE
---	TELEPHONE POLE
---	TREES
---	HERDS

GROUND ELEVATION DATUM

GRADE ELEVATION DATUM

CURVE DATA

Δ	DEFLECTION ANGLE
D	DEGREE OF CURVE
R	RADIUS OF CURVE
T	TANGENT DISTANCE
L	LENGTH OF CURVE
E	EXTERNAL DISTANCE
P. I.	POINT OF INTERSECTION
P. C.	POINT OF CURVE
P. T.	POINT OF TANGENT
P. O. T.	POINT ON TANGENT

POOR ORIGINAL COPY

SCALES

1" = 100'	TITLE
1" = 5'	TYPICAL
1" = 30'	PLAN
1" = 50'	PROFILE HORIZONTAL
1" = 10'	PROFILE VERTICAL
1" = 2"	CROSS SECTIONS

THESE PLANS ARE SUBJECT TO SUCH REVISIONS AS MAY BE REQUIRED BY THE BUREAU OF PUBLIC ROADS OR THE COMMISSIONER OF HIGHWAYS.

CONSTRUCTION IS TO BE CARRIED ON IN ACCORDANCE WITH THE PLANS AND THE STANDARD ROAD AND BRIDGE SPECIFICATIONS OF 1948, AS APPROVED JULY 23, 1949 BY THE BUREAU OF PUBLIC ROADS INCLUDING ALL SUBSEQUENT APPROVED REVISIONS AND SUCH REVISED SPECIFICATIONS AND SPECIAL PROVISIONS AS ARE SUBMITTED WITH THE PLANS.

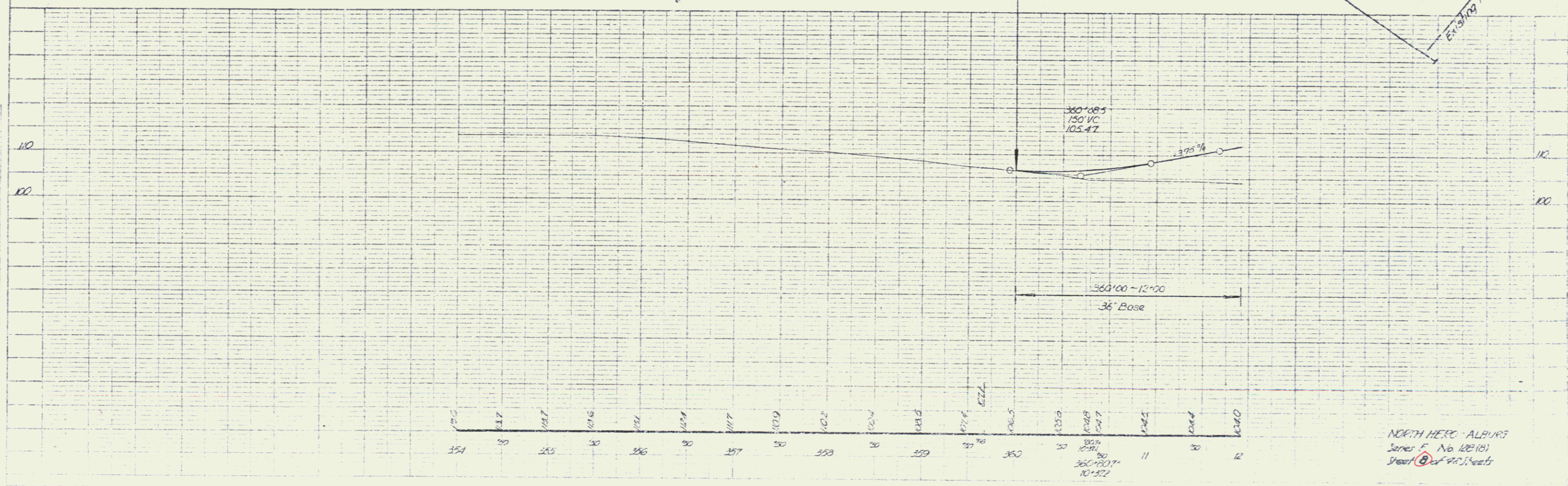
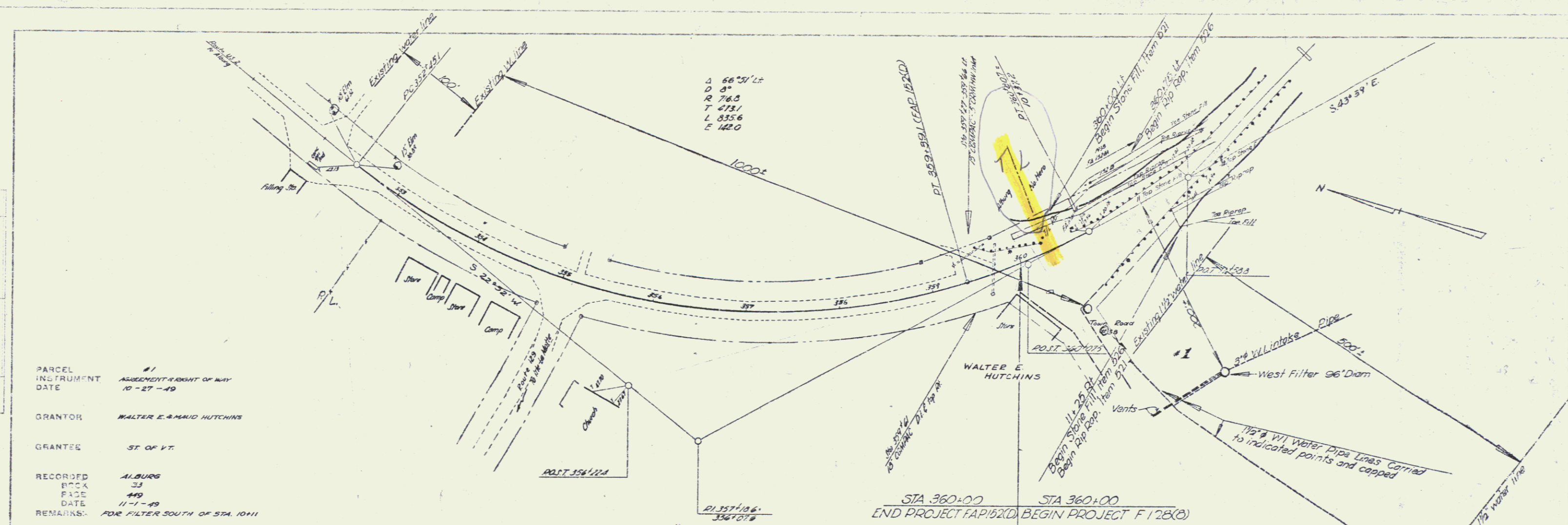
APPROVED: 19 AUG 1949
H. E. Sargent
CHIEF ENGINEER

APPROVED: 19 AUG 1949
H. E. Sargent
DISTRICT HIGHWAY COMMISSIONER

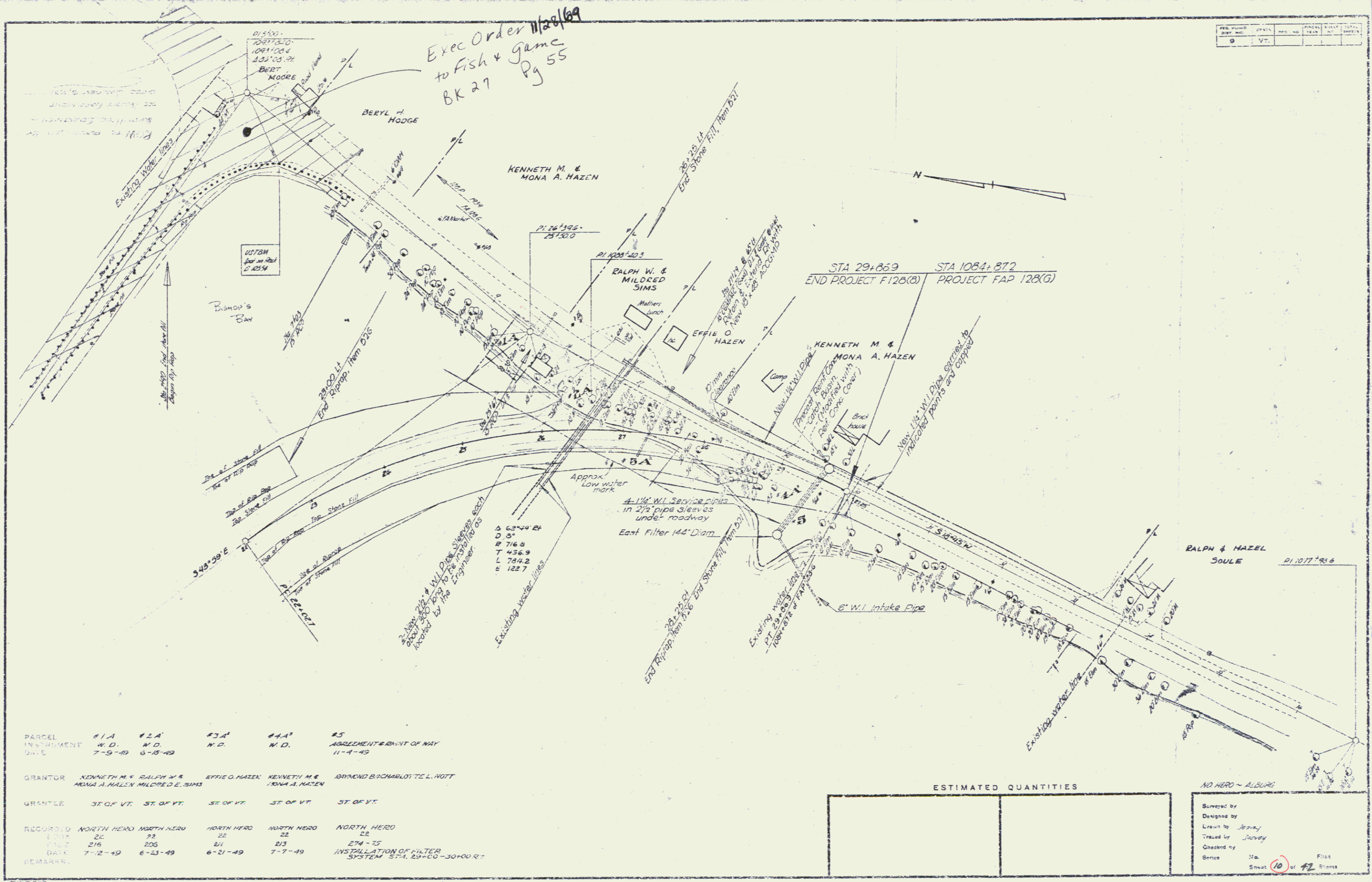
Project No. F 128 (8)
SERIES F NO. 128 (8) FILED
SHEET 1 OF 42

PLAN
 PARTIAL
 NORTH ARROW
 1" = 40'

PARCEL #1
 INSTRUMENT ASSESSMENT & RIGHT OF WAY
 DATE 10-27-49
 GRANTOR WALTER E. & MAUD HUTCHINS
 GRANTEE ST OF VT.
 RECORDED ALBURY
 BOOK 31
 PAGE 449
 DATE 11-1-49
 REMARKS FOR FILTER SOUTH OF STA. 10+11



NORTH HERO - ALBURY
 Series F, No. 102(10)
 Sheet 8 of 10 sheets



Exec Order 11/29/69
to Fish & Game
BK 27 Pg 55

PER. NO.	DATE	NO. OF SHEETS	TOTAL SHEETS
9	VT.		

PARCEL	#1A	#2A	#3A	#4A	#5
INSTRUMENT	N.D.	N.D.	N.D.	N.D.	AGREEMENT & PART OF MAP
DATE	7-9-49	6-18-49			11-4-49
GRANTOR	KENNETH M. & MONA A. HAZEN	RALPH W. & MILDRED E. SIMS	EFFIE O. HAZEN	KENNETH M. & MONA A. HAZEN	ANDREW B. CHARLOTTE L. NOTT
GRANTEE	ST. OF VT.	ST. OF VT.	ST. OF VT.	ST. OF VT.	ST. OF VT.
RECORDED BOOK	NORTH HERO 22	NORTH HERO 22	NORTH HERO 22	NORTH HERO 22	NORTH HERO 22
PAGE	216	206	211	213	274-75
DATE	7-2-49	6-23-49	6-21-49	7-7-49	7-7-49
REMARKS					INSTALLATION OF FILTER SYSTEM STA. 29+00 TO 30+00 R.

ESTIMATED QUANTITIES	

NO HERO - ALBANY

Surveyed by
 Designed by
 Drawn by Jerry
 Traced by Jerry
 Checked by
 Series 35a
 Sheet 10 of 42 Sheets

4