

MUCK EXCAVATION
NB 2996+25 - 2997+75

SUB-BASE OF SAND
ITEM 202
NB 2995+00 - 2996+00
SB 3001+50 - 3010+30
NB 3002+50 - 3010+00

TREATED TIMBER CURB
ITEM 303
NB 2999+75 - 3002+25 Lt
SB 2998+25 - 3000+95 Lt
SB 3010+35 - 3011+00 Lt

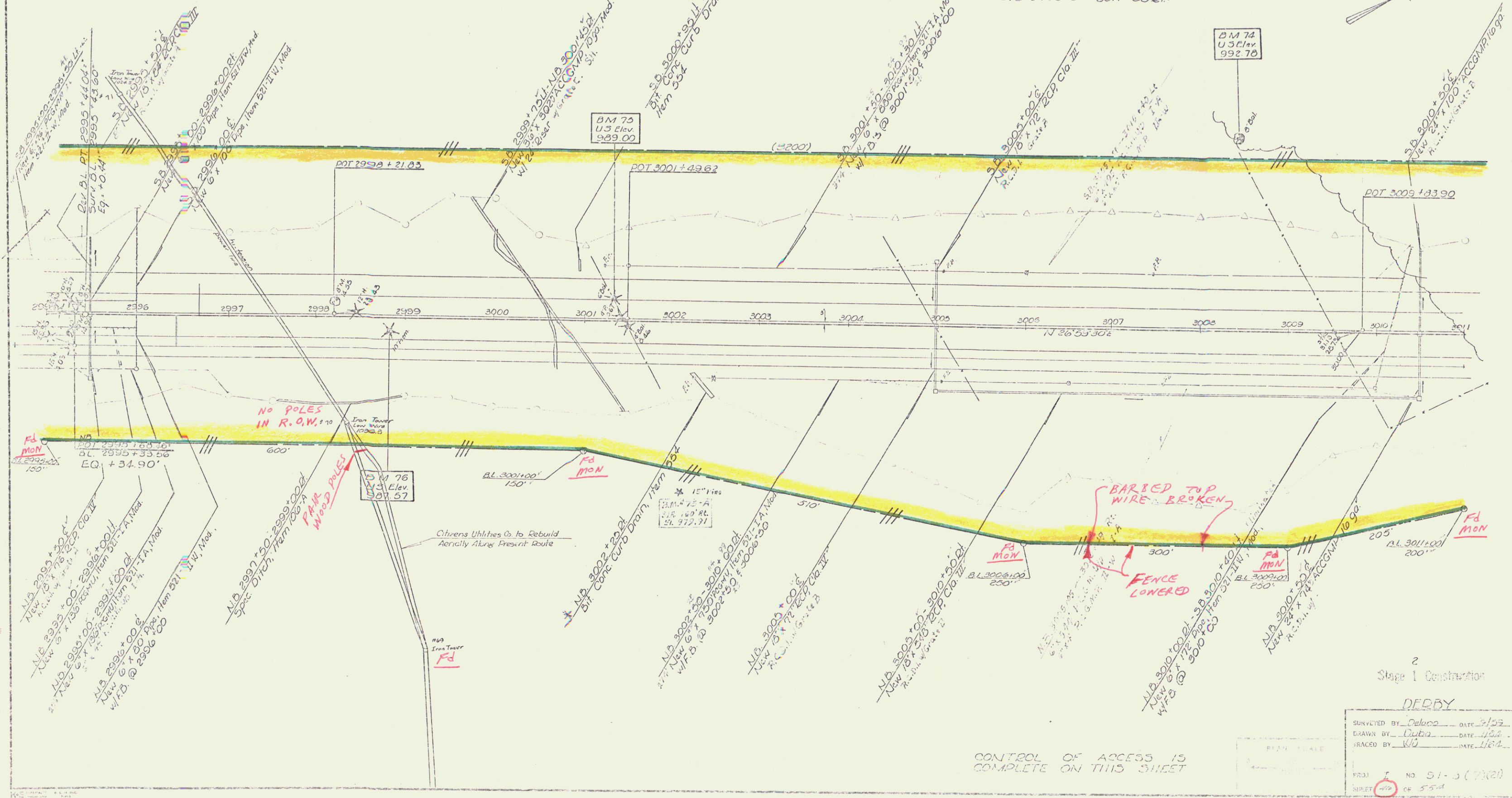
JUTE MATTING
ITEM 223
SB 2998+00 - 3005+00 Lt
SB 3003+00 - 3008+00 Lt
NB 3003+50 - 3005+00 Lt
SB 3007+50 - 3010+50 Lt
SB 3008+00 - 3010+00 Lt
NB 3008+00 - 3011+00 Lt

THREE CABLE GUARD RAILWAY
LIGHT STEEL POSTS, ITEM 338
NB 2995+00 - 2999+00 Lt
NB 2998+95 - 3002+38 Lt
SB 2998+25 - 3000+95 Lt

STAGE 2 CONSTRUCTION
STANDARD STEEL BEAM GUARD RAIL
WITH STEEL POSTS ITEM 545-A
(6' x 3" Spacing)
SB 3010+25 - 3011+00 Lt

SELECTIVE THINNING AND
SPRINKLING, ITEM 601
SB 2995+00 - 3001+00 Lt
SB 3003+00 - 3011+00 Lt

PROPERTY LINE FENCE, ITEM 503-II, Mod.
SB 2998+00 - 3011+00 Lt
NB 2998+00 - 3011+00 Lt



2
Stage 1 Construction

DERBY

SURVEYED BY: DeLoo DATE: 8/59
DRAWN BY: Dubs DATE: 1/64
TRACED BY: KJ DATE: 1/64
FR31 NO 51-3 (2)(2)
SHEET 49 OF 54

CONTROL OF ACCESS IS COMPLETE ON THIS SHEET

JUL 11 1974 28
DMS + ROW