

Scene Fill for Slope Protection  
S.B. 2947+50' to 2952+80'

THREE CABLE GUARD RAIL WITH LIGHT STEEL POSTS ITEM 538  
S.B. 2947+00' - 2952+80' Lt.

STANDARD STEEL BEAM GUARD RAIL WITH STEEL POSTS ITEM 543-A (6'-3" Spacing)  
N.B. 2947+00' - 2952+80' Lt.

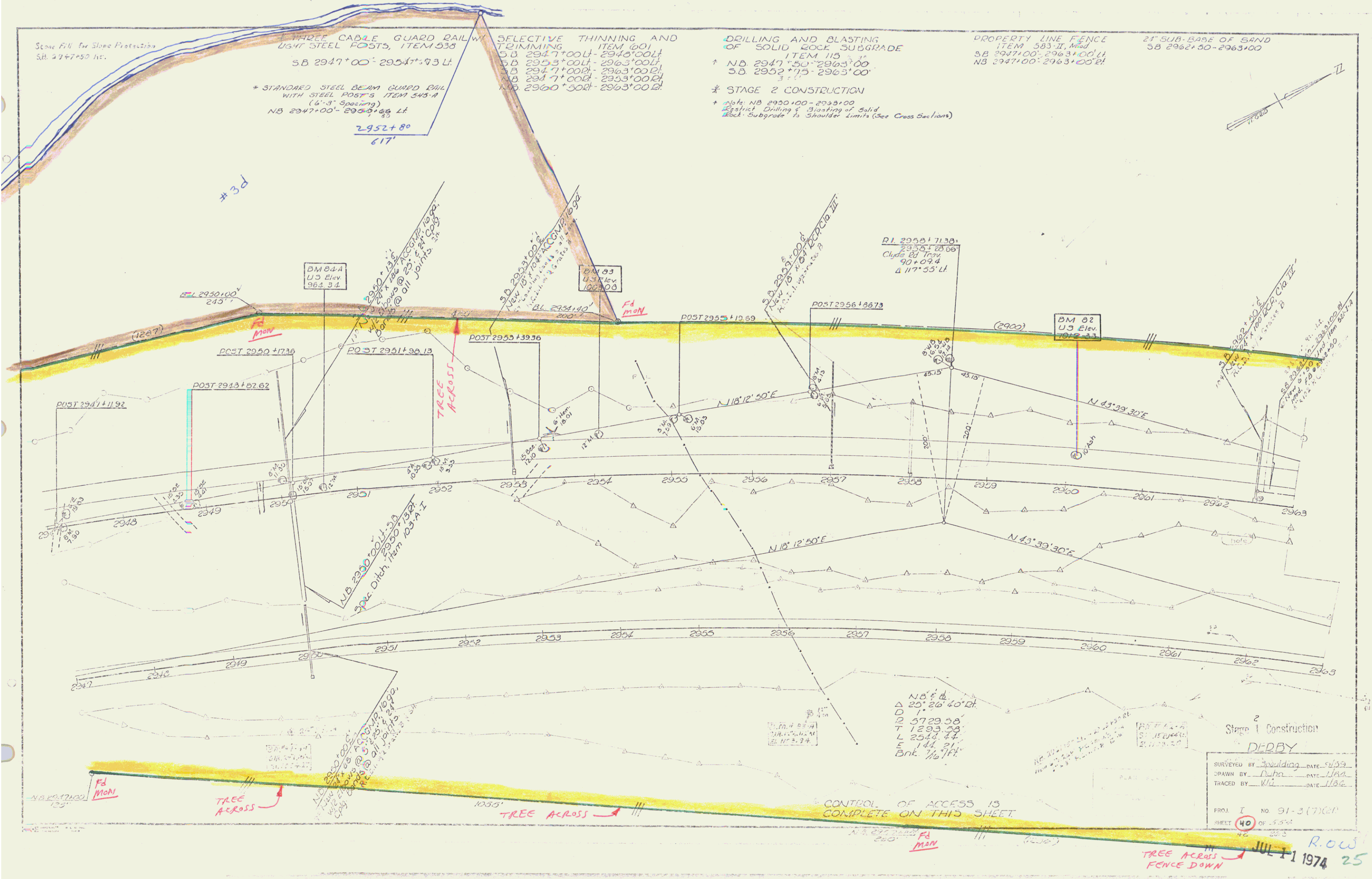
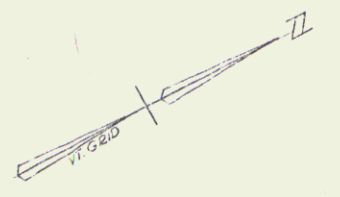
SELECTIVE THINNING AND TRIMMING ITEM 601  
S.B. 2947+00' - 2948+00' Lt.  
S.B. 2948+00' - 2949+00' Lt.  
S.B. 2949+00' - 2950+00' Lt.  
S.B. 2950+00' - 2951+00' Lt.  
S.B. 2951+00' - 2952+80' Lt.

DRILLING AND BLASTING OF SOLID ROCK SUBGRADE ITEM 115  
\* N.B. 2947+50' - 2963+00'  
S.B. 2952+75' - 2963+00'

PROPERTY LINE FENCE ITEM 583-II, Mod  
S.B. 2947+00' - 2963+00' Lt.  
N.B. 2947+00' - 2963+00' Lt.

21' SUB-BASE OF SAND  
S.B. 2962+50' - 2963+00'

\* STAGE 2 CONSTRUCTION  
\* Note: NB 2950+00' - 2955+00'  
\* Strict Drilling & Blasting of Solid Rock Subgrade to Shoulder Limits (See Cross Sections)



N 0° E & D  
25' 26' 40" Lt.  
D 5729.58'  
T 1293.59'  
L 2544.77'  
E 144.21'  
Bnk 1/10' Ft.

Stage 2 Construction  
DERBY

SURVEYED BY Spaulding DATE 5/59  
DRAWN BY Dahn DATE 11/62  
TRACED BY WJ DATE 11/62

PROJ. I NO. 91-3 (7) 60P  
SHEET 40 OF 55

R.O.W.  
JUL 1 1974 25  
TREE ACROSS FENCE DOWN