

POOR ORIGINAL SURV

THREE CABLE GUARD RAIL
W/ STEEL POSTS, ITEM 542
92° 00' - 101° 00' 00" L₁ - 40'
104° 52' - 01° 00' 00" L₂

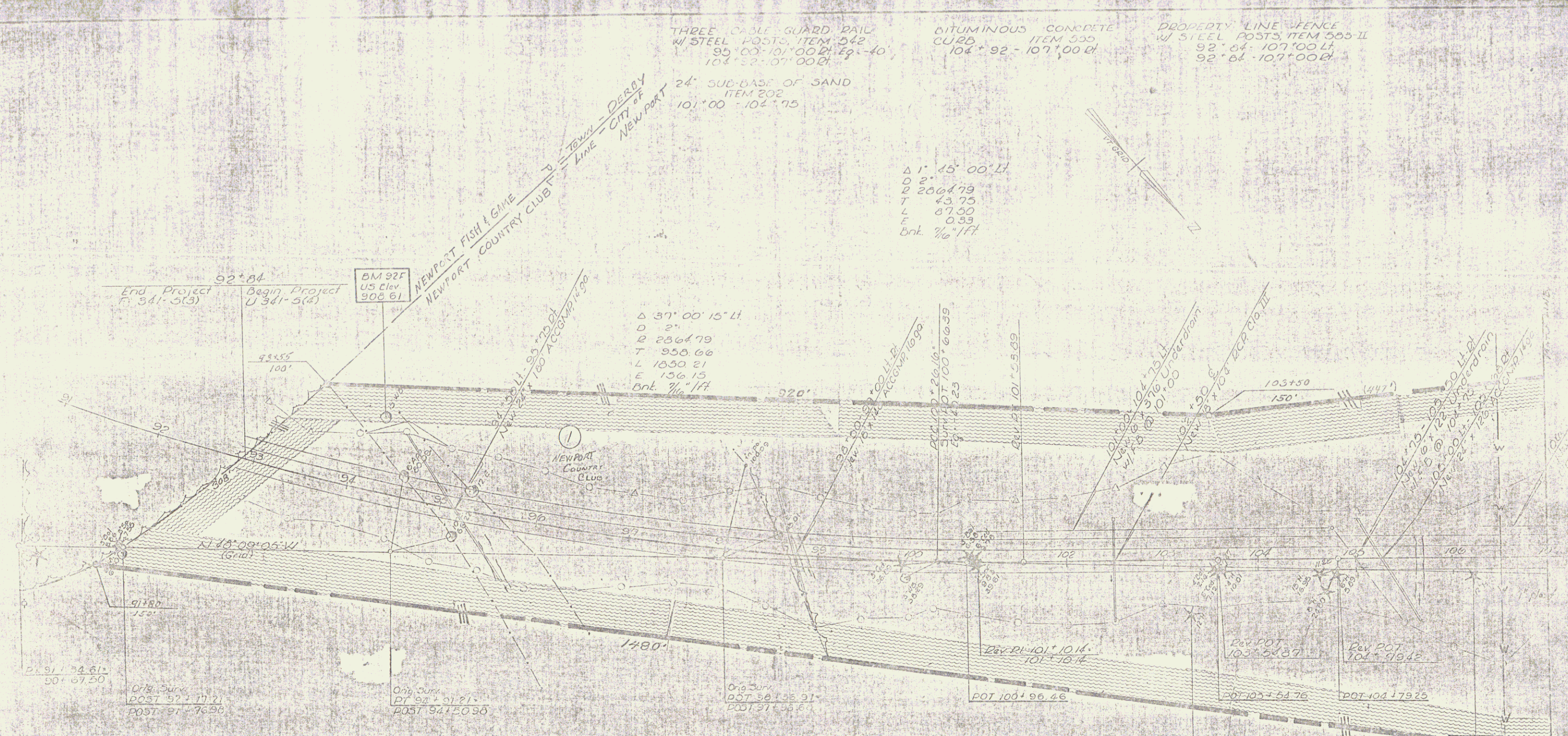
BITUMINOUS CONCRETE
CURB, ITEM 535
104° 32' - 107° 00' 00" L₁

PROPERTY LINE FENCE
W/ STEEL POSTS, ITEM 505 II
92° 04' - 107° 00' 00" L₁
92° 04' - 107° 00' 00" L₂

24" SUB-BASE OF SAND
ITEM 202
101° 00' - 104° 15'

Δ 1° 15' 00" L₁
D 2004.79
T 43.75
L 87.50
E 0.53
Bnt. 1/16" / ft

Δ 37° 00' 15" L₁
D 2"
T 2804.79
L 1050.21
E 156.15
Bnt. 1/16" / ft



End Project
F 341-5(3)
92+00

Orig. Surv.
POST 92+17.21
POST 91+76.96

Orig. Surv.
PT 92+01.21
POST 94+50.56

Orig. Surv.
POST 96+136.91
POST 97+56.67

BM 92G
US Elev.
1002.26

BM 92H
US Elev.
1015.69

VERMONT DEPARTMENT
RIGHT-OF-WAY
NEWPORT

MAR 13 1990