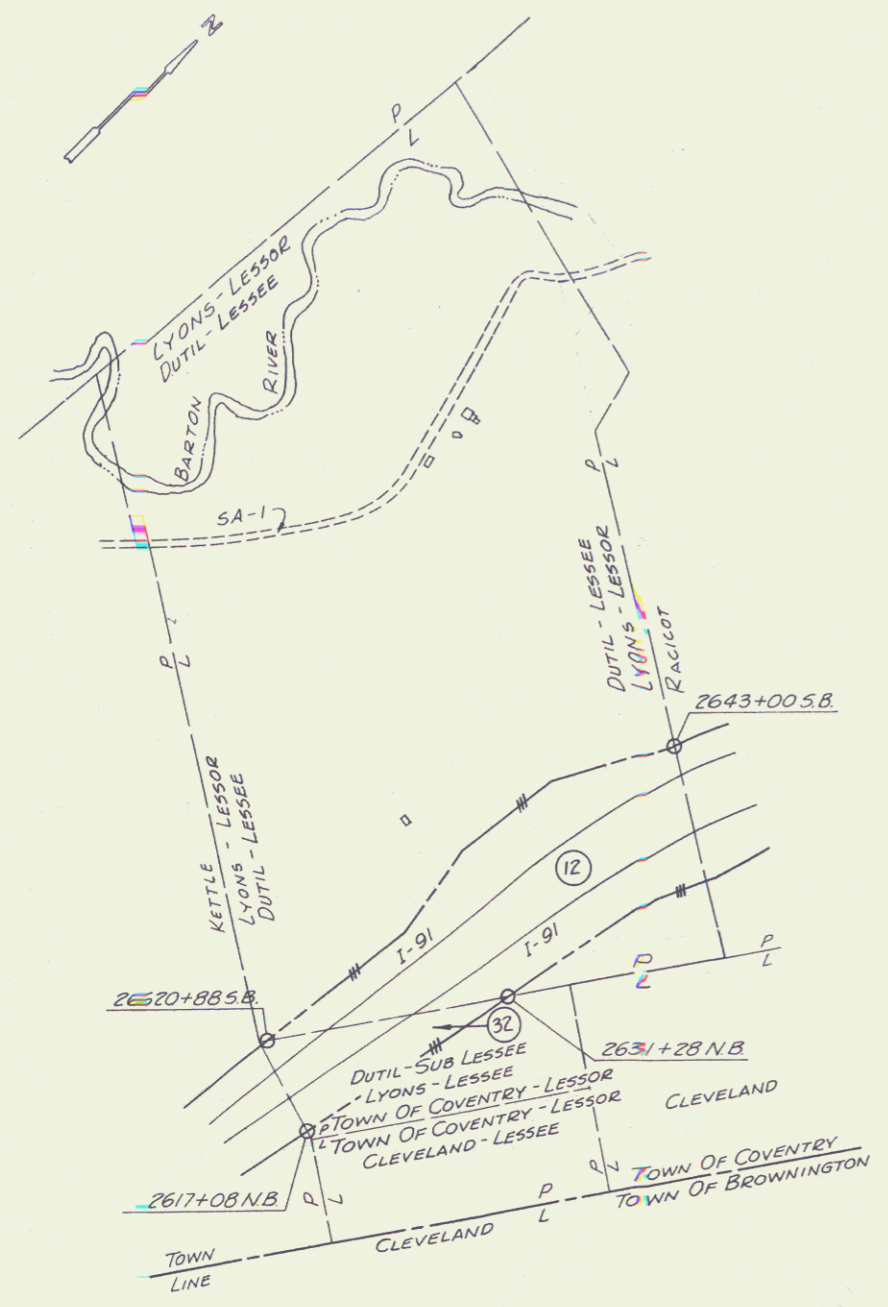


PLAN
 DATE
 CHECKED
 DATE
 CHECKED



WILLIAM B. LYONS, LESSOR
 DUTIL, PLACIDE & BLANDINE, LESSEE
 I-91-3(16) PARCEL NO. 12
 TOTAL ACREAGE 227 A.
 TAKING 271 A.
 REMAINING 199.9 A.
 LOSS OF ACCESS 4.2 A.
 BEGIN STA 2620+88 S.B.
 END STA 2643+00 S.B.

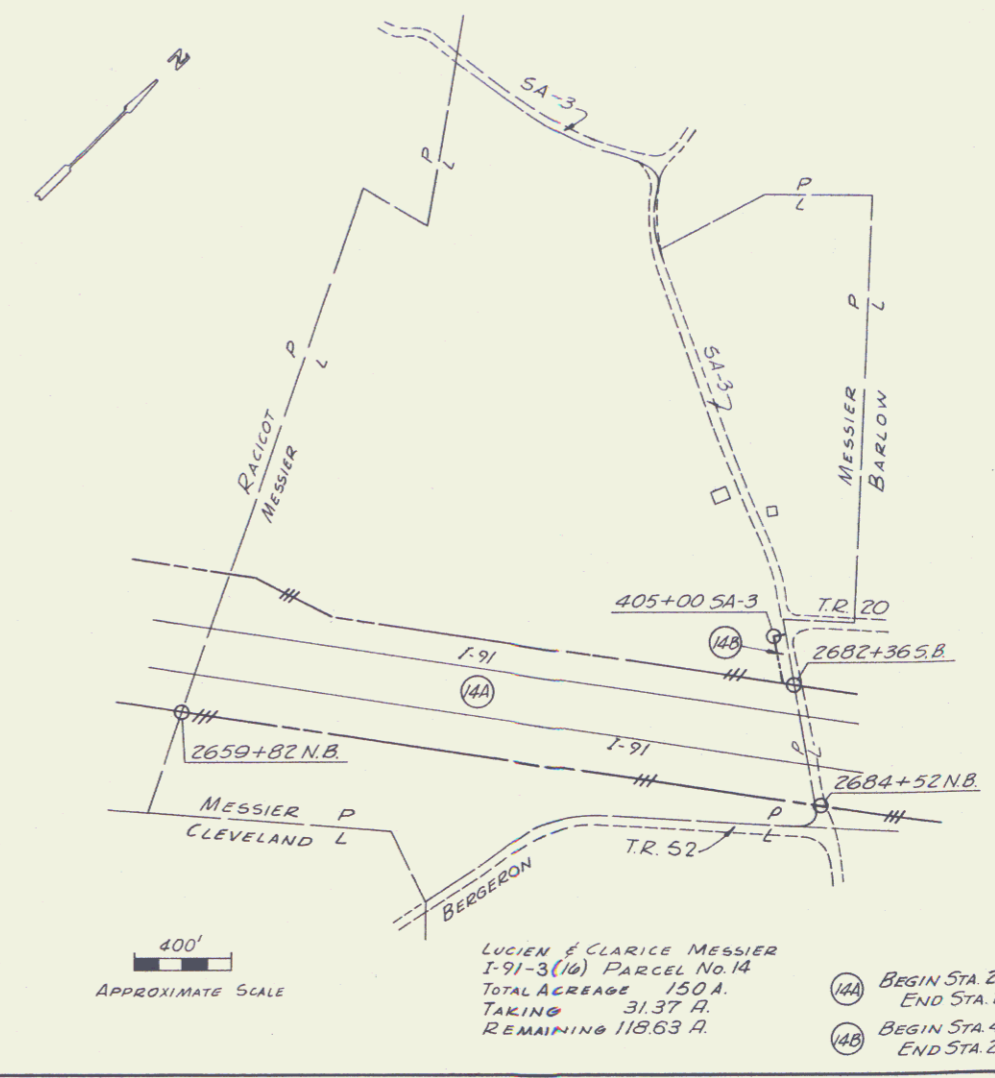
TOWN OF COVENTRY, LESSOR
 DUTIL, PLACIDE & BLANDINE, LESSEE
 LYONS, WILLIAM B., LESSEE
 I-91-3(16) PARCEL NO. 32
 TOTAL ACREAGE 25 A.
 TAKING 11.8 A.
 REMAINING 13.2 A.
 BEGIN STA 2617+08 N.B.
 END STA 2631+28 N.B.

500'
 APPROXIMATE SCALE



RACICOT, ADELARD & ALDEA
 I-91-3(16) PARCEL NO. 13
 TOTAL ACREAGE 235 A.
 TAKING 281 A.
 REMAINING 210.9 A.
 LOSS OF ACCESS 14.6 A.
 BEGIN STA 2643+48 N.B.
 END STA 2661+40 S.B.

400'
 APPROXIMATE SCALE



LUCIEN & CLARICE MESSIER
 I-91-3(16) PARCEL NO. 14
 TOTAL ACREAGE 150 A.
 TAKING 31.37 A.
 REMAINING 118.63 A.
 BEGIN STA 2659+82 N.B.
 END STA 2684+52 N.B.
 BEGIN STA 405+00 SA-3
 END STA 2682+36 S.B.

400'
 APPROXIMATE SCALE

VERMONT
 DEPARTMENT OF HIGHWAYS
INTERSTATE ROUTE 91
 PROJECT NO. 191-3(16) ROW
 BARTON - DERBY VERMONT
 TOTAL AREA SKETCHES
 EDWARDS AND KELCEY, INC.
 BOSTON, MASSACHUSETTS
 DATE APRIL, 1966 SHEET 10 OF 88

8