

Drilling & Blasting of Solid Rock
Subgrade, Item 115
S.B. 2407+00 - 2411+25
N.B. 2407+75 - 2410+855

Sub-base of Sand, Item 202
N.B. 2406+00 - 2419+75

* Three Cable Guard Rail w/light
Steel Posts, Item 538

S.B. 2419+00 - 2423+00 Lt
2419+90 - 2423+00 Rt
N.B. 2418+50 - 2422+00 Rt
2418+50 - 2422+00 Lt

* TREATED TIMBER CURB
Item 558

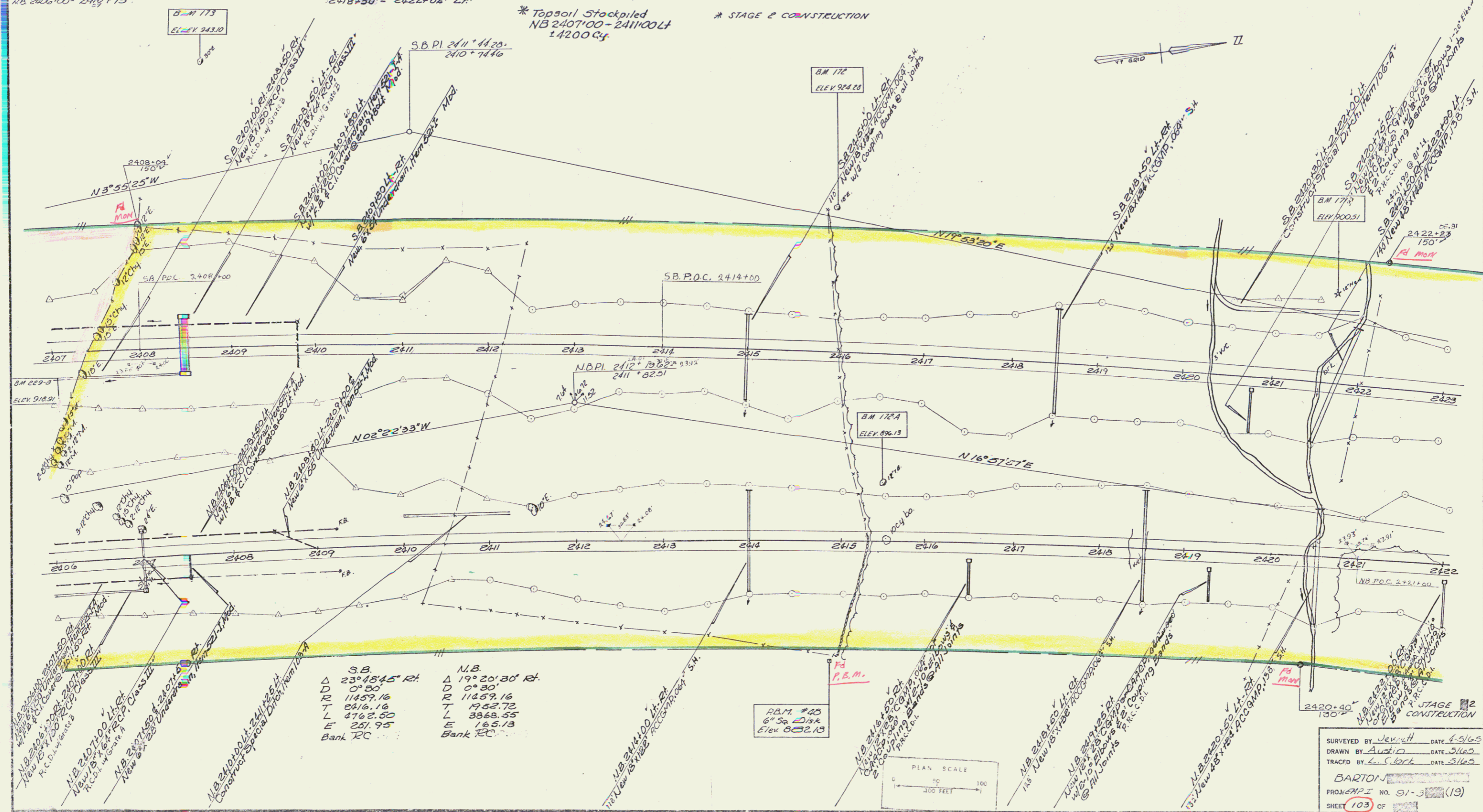
S.B. 2418+00 - 2423+00 Rt
N.B. 2418+50 - 2422+00 Rt

Muck Excavation, Item 117
N.B. 2411+75 - 2415+50

Property Line Fence
w/Steel Posts, Item 533-II, Mod
N.B. 2406+00 - 2422+00 Rt
S.B. 2407+00 - 2423+00 Lt

* Topsoil Stockpiled
NB 2407+00 - 2411+00 Lt
14200 Cy

* STAGE 2 CONSTRUCTION



JUL 11 1974