

Muck Excavation, Item 117
 S.B. 2364+20 - 2367+25
 S.B. 2373+25 - 2375+00

* Three Cable Guard Rail w/ Light Steel Posts, Item 538
 S.B. 2362+36 - 2363+44 RT
 " 2362+44 - 2363+49 RT
 N.B. 2368+50 - 2368+64 LT
 N.B. 2362+50 - 2370+66 RT

* Bridge Railing Item 572
 S.B. 2359+00 - 2359+16 LT
 S.B. 2360+58 - 2362+83 RT
 S.B. 2360+63 - 2362+88 LT
 N.B. 2359+35 - 2360+49 RT
 N.B. 2359+47 - 2360+60 LT

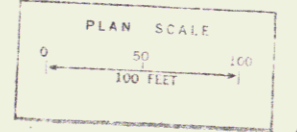
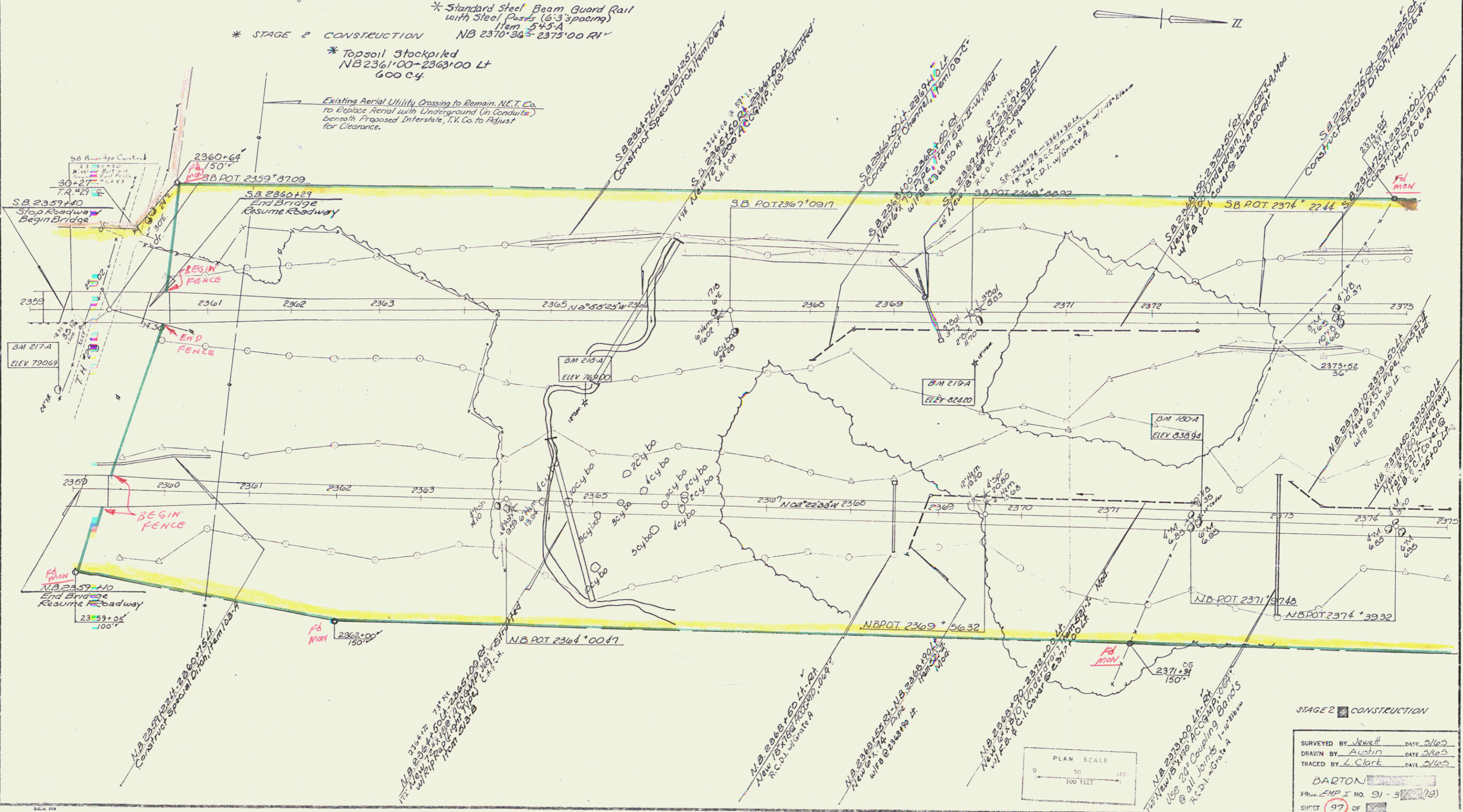
Stone Fill For Slope Protection Item 572
 S.B. 2366+50 LT - 2369+10 LT
 S.B. 2362+49 RT - 2363+25 RT

Property Line Fence w/ Steel Posts, Item 525-III Mod.
 N.B. 2359+00 - 2375+00 RT
 S.B. 2360+29 - 2375+00 LT

Treated Timber Curb Item 558
 S.B. 2360+43 - 2360+78 LT
 S.B. 2360+50 - 2360+73 RT

Sub-base of Sand Item 202
 S.B. 2369+00 - 2372+00 RT

* STAGE 2 CONSTRUCTION
 * Standard Steel Beam Guard Rail with Steel Posts (6'3" spacing) Item 545-A
 N.B. 2370+30 - 2375+00 RT
 * Topsoil Stockpiled
 N.B. 2361+00 - 2363+00 LT
 600 c.y.



STAGE 2 CONSTRUCTION

| | | | |
|------------------------------|----------|------|------|
| SURVEYED BY | Newell | DATE | 3/65 |
| DRAWN BY | Austin | DATE | 3/65 |
| TRACED BY | L. Clark | DATE | 3/65 |
| BARTON | | | |
| FROM EMP. I. NO. 91 - 5 (19) | | | |
| SHEET | 97 | OF | 114 |

JUL 11 1974