

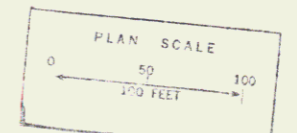
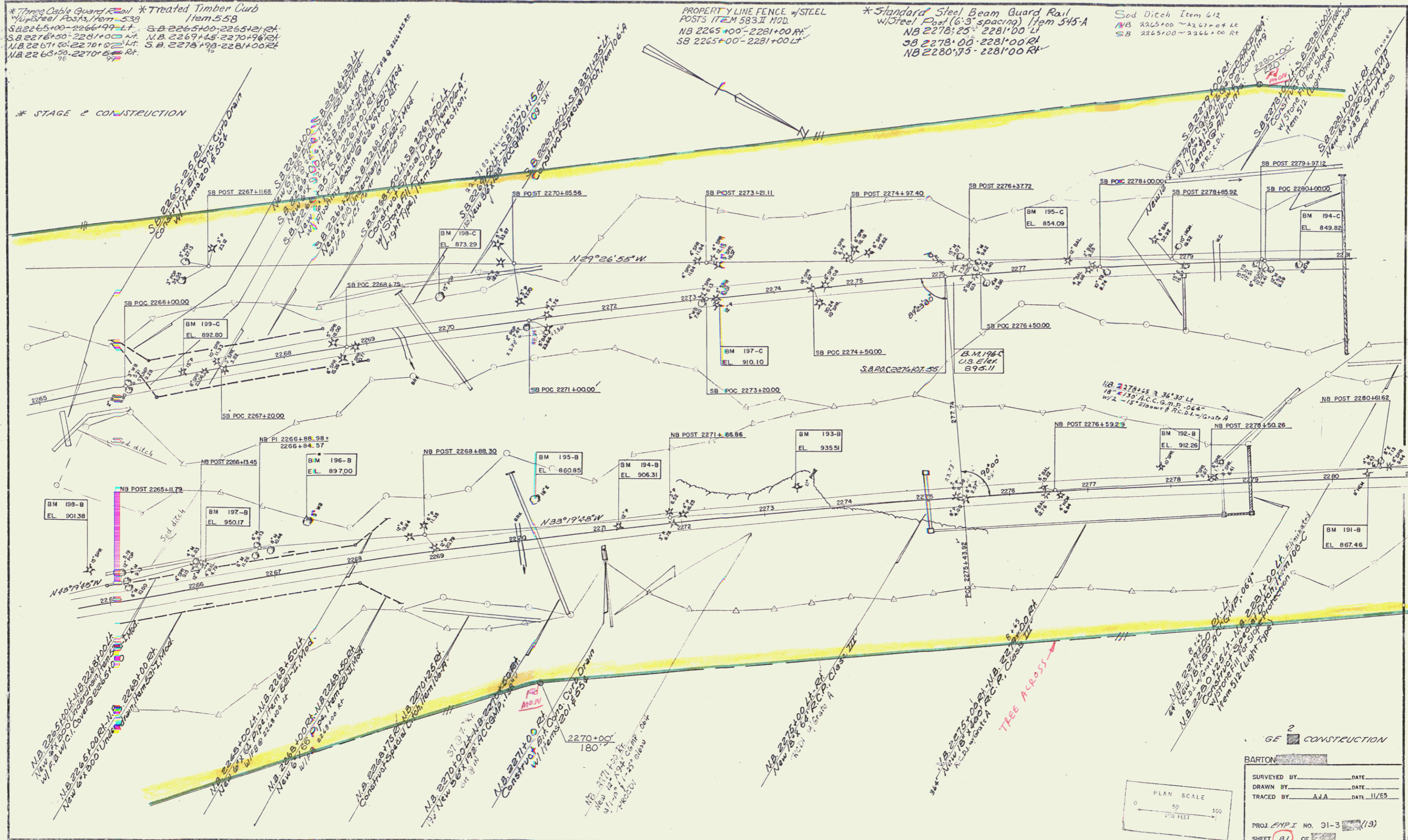
* Three Cable Guard Rail * Treated Timber Curb
 w/ Item 512, Item 539
 S.B. 2265+00-2266+99.14 Lt. S.B. 2265+00-2265+121.24 Rt.
 S.B. 2266+00-2267+00 Lt. S.B. 2267+00-2270+96.14 Rt.
 N.B. 2267+00-2270+00 Lt. S.B. 2270+00-2271+00 Rt.
 N.B. 2268+00-2270+00 Lt.

PROPERTY LINE FENCE w/ STEEL
 POSTS ITEM 583.11 MOD.
 NB 2265+00-2281+00 Rt.
 SB 2265+00-2281+00 Lt.

* Standard Steel Beam Guard Rail
 w/ Steel Post (6'-3" spacing) Item 515-A
 NB 2278+25'-2281+00 Lt.
 SB 2278+00'-2281+00 Rt.
 NB 2280+75'-2281+00 Rt.

Sod Ditch Item 412
 NB 2265+00-2267+09.14
 SB 2265+00-2266+00 Rt.

* STAGE 2 CONSTRUCTION



GE 2 CONSTRUCTION
 BARTON
 SURVEYED BY _____ DATE _____
 DRAWN BY _____ DATE _____
 TRACED BY AJA DATE 11/85
 PROJ. ENPI NO. 91-3 (19)
 SHEET 87 OF 114

JUL 11 1985