

* STAGE 2 CONSTRUCTION

* Three Cable Guard Rail
Light Steel Posts, Item 538
S.B. 2249+00-2255+50 LH
2250+19-2256+51 RT
N.B. 2250+59-2256+08 LH
2252+00-2256+08 RT

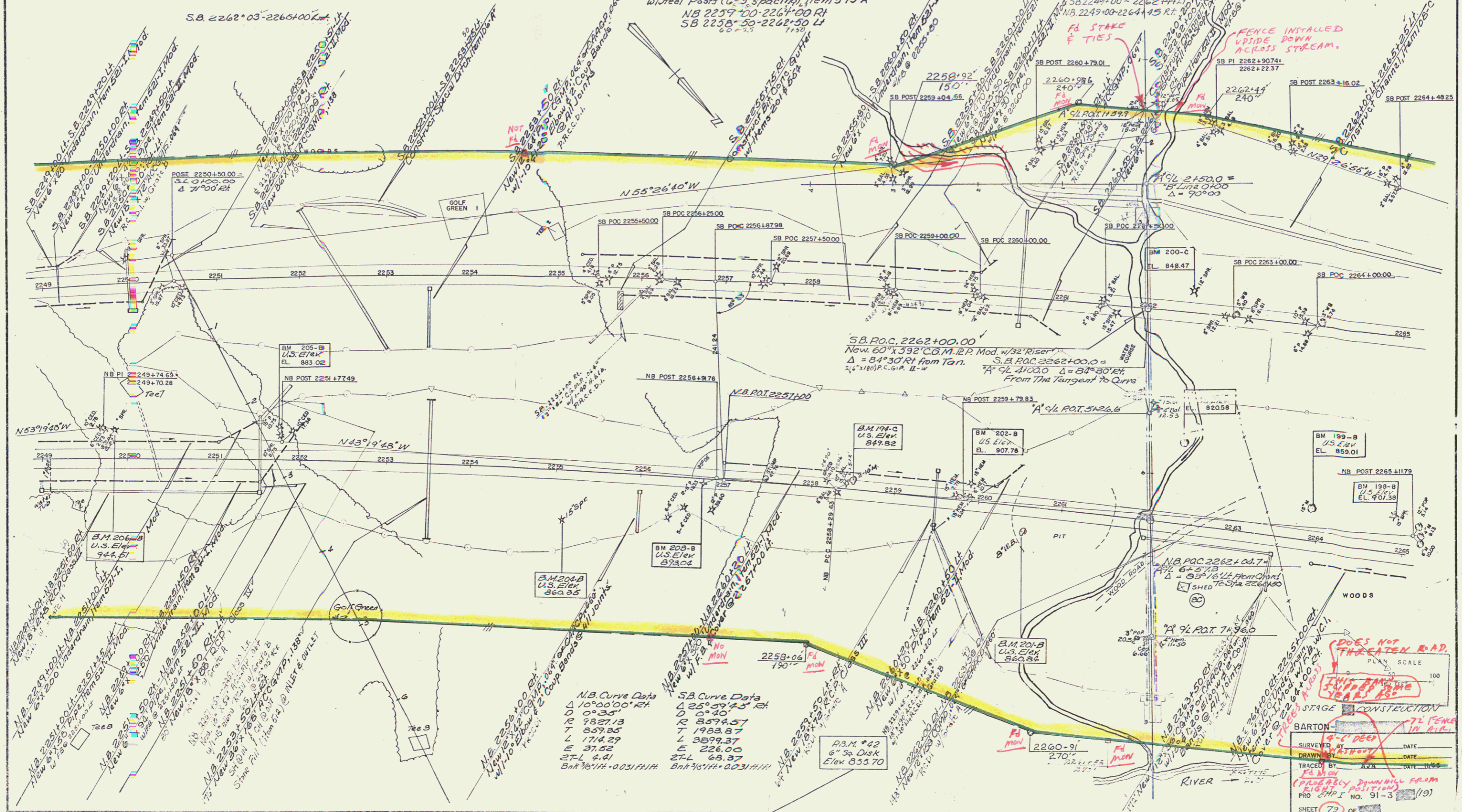
* TREATED TIMBER CURB
Item 558
S.B. 2250+96-2255+71 RT
N.B. 2252+72-2256+02 RT
N.B. 2259+45-2263+52 RT
S.B. 2260+74-2265+00 RT

Sub-base of Sand
Item 202
SB 2249+00-2249+25
NB 2249+00-2251+25

Demolition & Disposal of Building
Item 586
N.B. 2262+50 RT

* Standard Steel Beam Guard Rail
Light Steel Posts (6'-3" spacing), Item 545-A
N.B. 2259+00-2264+00 LH
S.B. 2258+50-2262+50 LH

Property Line Fence
w/ Steel Posts, Item 533-IT Mod
N.B. 2249+00-2265+00 RT
S.B. 2249+00-2265+00 LH
To be Erected Prior to Const.
S.B. 2249+00-2262+44 LH
N.B. 2249+00-2264+45 RT



N.B. Curve Data		S.B. Curve Data	
Δ	10°00'00" RT	Δ	25°57'45" RT
D	0°35'	D	0°40'
R	9827.13	R	8594.57
T	857.35	T	1983.87
L	1714.29	L	3897.37
E	31.52	E	226.00
STL	4.41	STL	69.37
Bank 30'H @ 0.031 FH		Bank 30'H @ 0.031 FH	

DOES NOT THREATEN ROAD.
THIS BANK SLIPPED THE YEAR '80

BARTON STAGE 2 CONSTRUCTION
SURVEYED BY DATE
DRAWN BY DATE
TRACED BY DATE
PRO. EMP. NO. 91-3 (19)
SHEET 79 OF 114

69
JUL 11 1974