

\* Three Cable Guard Rail w/ Steel Posts, Item 539  
 S.B. 2236+50-2243+54 RT  
 N.B. 2236+00-2243+06 LT  
 S.B. 2248+78-2249+00 LT

\* Treated Timber Curb Item 558  
 S.B. 2237+05-2242+52 RT  
 N.B. 2237+65-2242+02 LT

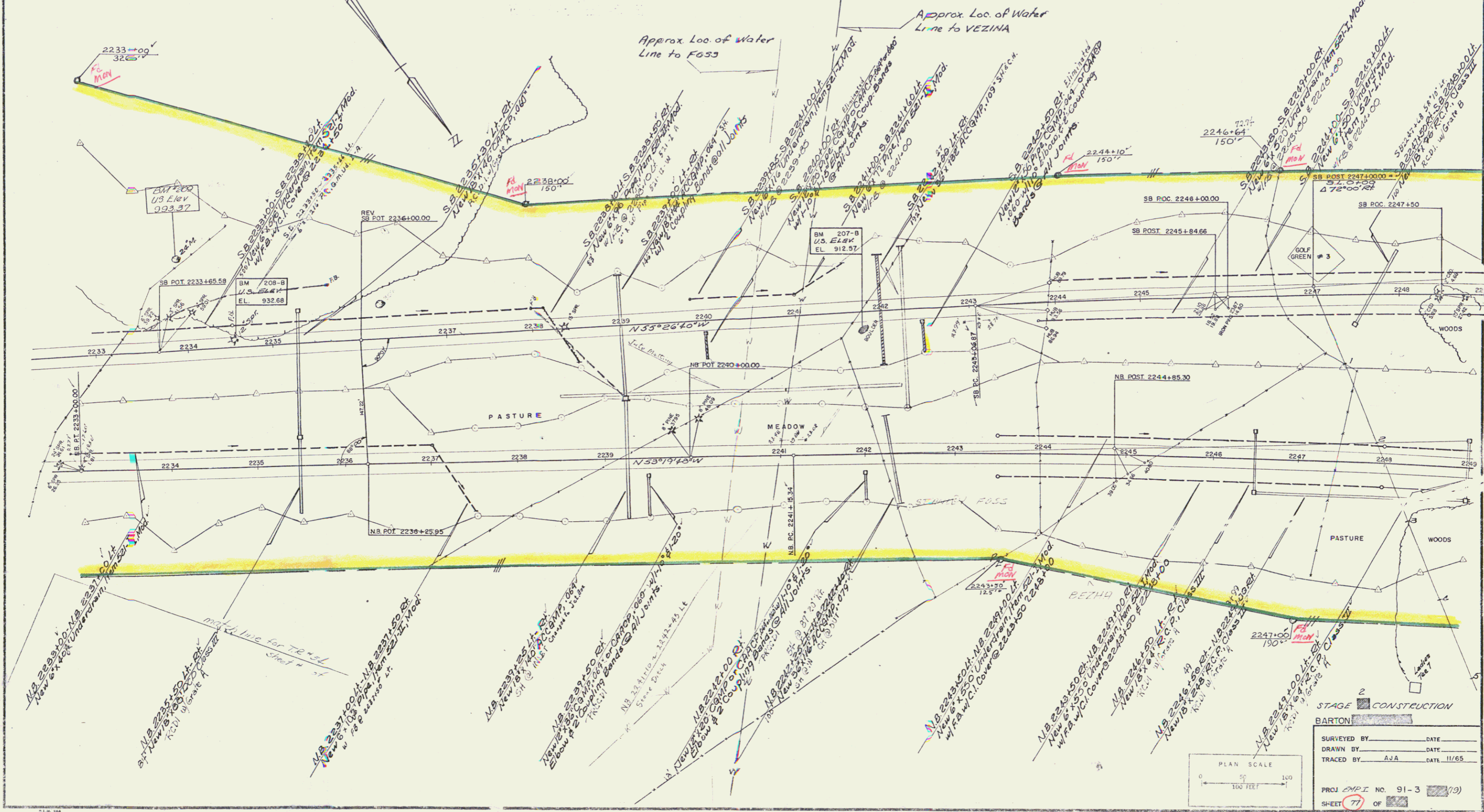
Property Line Fence w/ Steel Posts, Item 583-2 Mod.  
 N.B. 2233+00-2249+00 RT  
 S.B. 2233+00-2249+00 LT  
 To be Erected Prior to Construction  
 S.B. 2237+00-2249+00 LT  
 N.B. 2233+00-2249+00 RT

Sub-base of Sand, Item 202  
 N.B. 2233+00-2237+00  
 S.B. 2233+00-2239+00  
 S.B. 2243+25-2249+00

Gravel Blanket for Slope Stabilization, Item 222-A Mod.  
 S.B. 2239+00-2239+52 LT  
 S.B. 2243+25-2249+00

Jute Matting Item 423  
 N.B. 2238+50-2241+10 LT  
 Stone Ditch Item 512  
 N.B. 2241+10-2242+45 LT

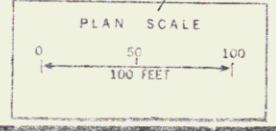
\* STAGE 2 CONSTRUCTION



STAGE 2 CONSTRUCTION  
 BARTON

SURVEYED BY	DATE
DRAWN BY	DATE
TRACED BY	DATE 11/65

PROJ. NO. 91-3 (19)  
 SHEET 71 OF 114



JUL 11 1974