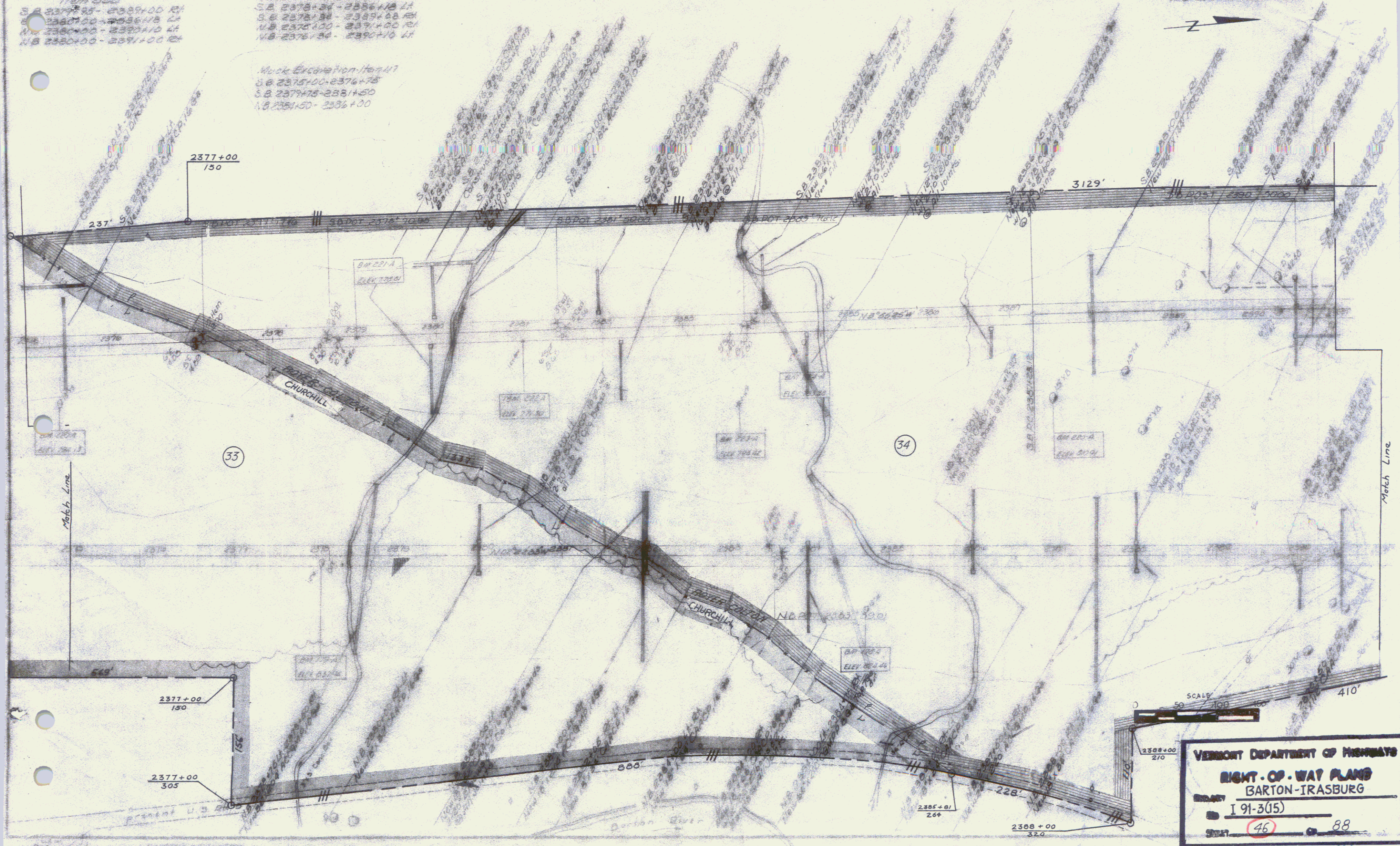
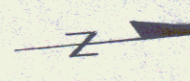


1. **EXISTING LOCATIONS**
 FROM 550
 S.B. 2337+00 - 2339+00 R/L
 N.B. 2337+00 - 2339+00 L/R
 S.B. 2339+00 - 2341+00 R/L
 N.B. 2339+00 - 2341+00 L/R

2. **PROPOSED LOCATIONS**
 w/ Steel Posts from 545
 S.B. 2375+00 - 2376+00 L/R
 S.B. 2376+00 - 2377+00 R/L
 N.B. 2375+00 - 2376+00 L/R
 N.B. 2376+00 - 2377+00 R/L

3. **Work Excavation**
 S.B. 2375+00 - 2376+00
 S.B. 2376+00 - 2377+00
 N.B. 2375+00 - 2376+00
 N.B. 2376+00 - 2377+00

STAGE 2 CONSTRUCTION



VERMONT DEPARTMENT OF HIGHWAYS
RIGHT-OF-WAY PLANS
 BARTON-IRASBURG
 PROJECT I 91-3(15)
 SHEET 46 OF 88
 41