

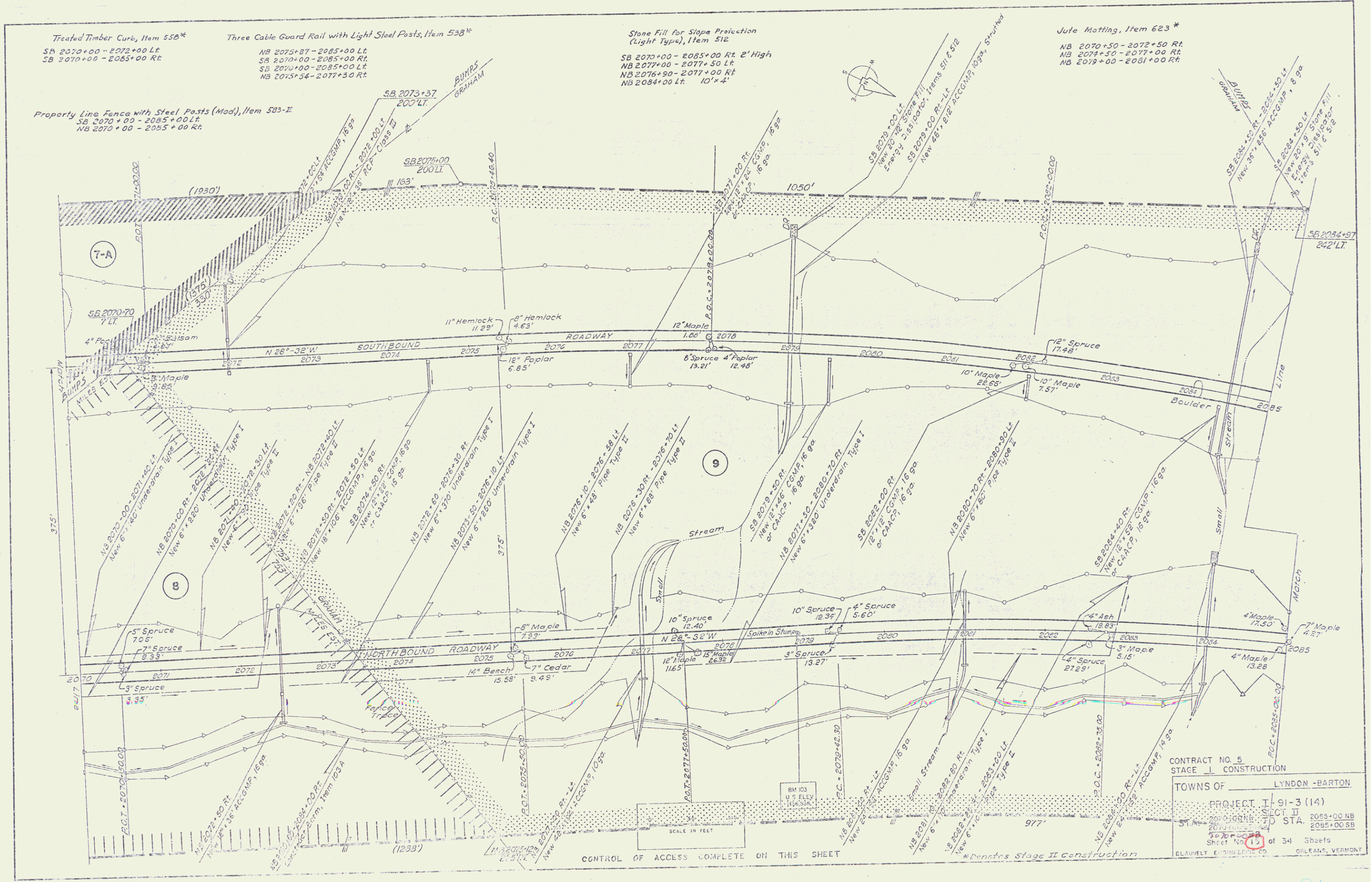
Treated Timber Curb, Item 558*
 SB 2070+00 - 2072+00 Lt.
 SB 2070+00 - 2085+00 Rt.

Three Cable Guard Rail with Light Steel Posts, Item 538*
 NB 2075+87 - 2085+00 Lt.
 SB 2070+00 - 2085+00 Rt.
 SB 2070+00 - 2085+00 Lt.
 NB 2075+34 - 2077+30 Rt.

Stone Fill for Slope Protection (Light Type), Item 512
 SB 2070+00 - 2085+00 Rt. 2' High
 NB 2077+00 - 2077+50 Lt.
 NB 2076+90 - 2077+00 Rt.
 NB 2084+00 Lt. 10' x 4'

Jute Matting, Item 623*
 NB 2070+50 - 2072+50 Rt.
 NB 2074+50 - 2077+00 Rt.
 NB 2079+00 - 2081+00 Rt.

Property Line Fence with Steel Posts (Mod), Item 5B3-II
 SB 2070+00 - 2085+00 Lt.
 NB 2070+00 - 2085+00 Rt.



SCALE IN FEET
 CONTROL OF ACCESS COMPLETE ON THIS SHEET

CONTRACT NO. 5
 STAGE I CONSTRUCTION
 TOWNS OF LYNDON - BARTON
 PROJECT I-91-3 (14)
 SHEET NO. 13 of 34
 SHEETS
 ORLEANS, VERMONT

91