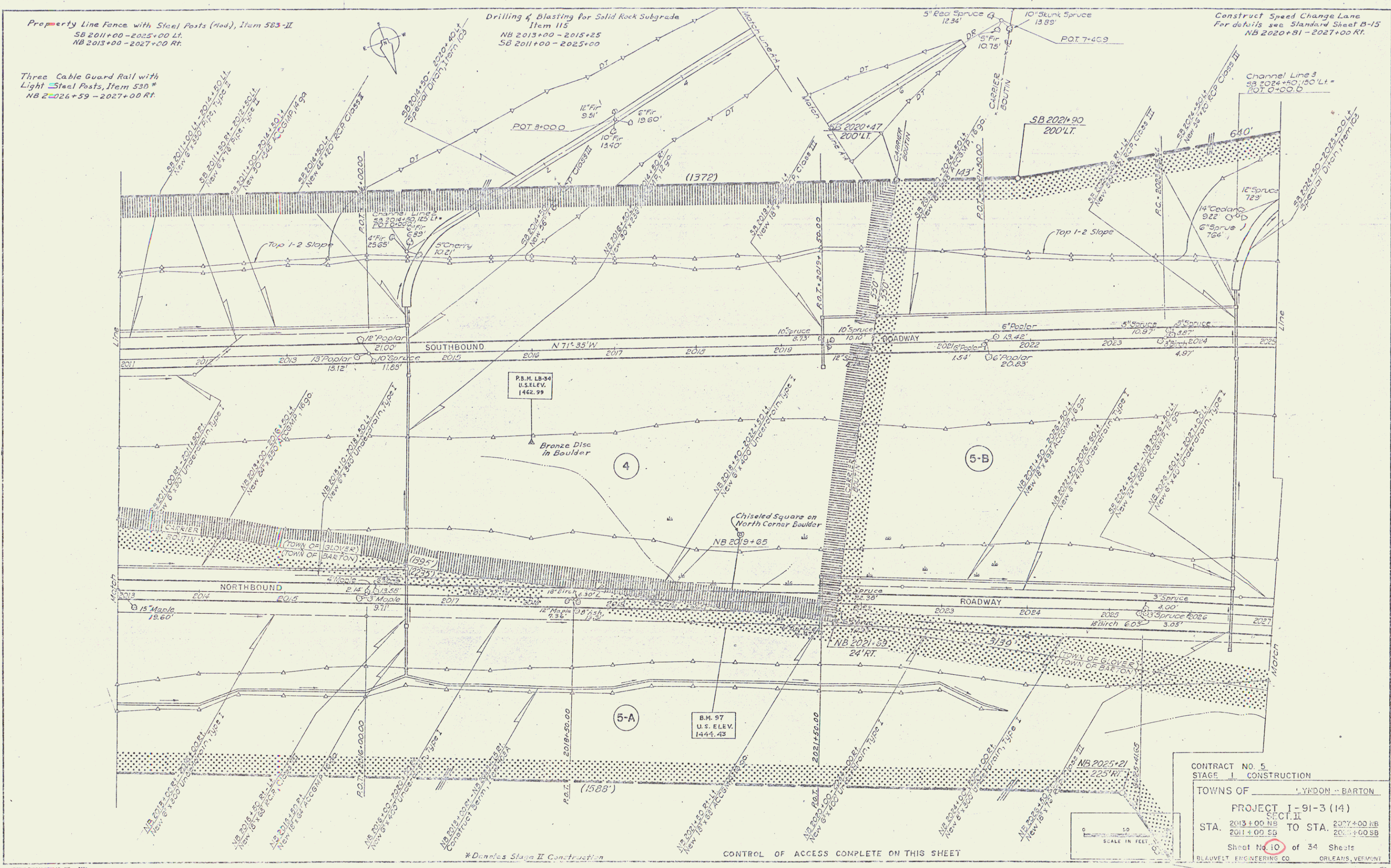


Property Line Fence with Steel Posts (new), Item 583-II
 SB 2011+00 - 2025+00 Lt.
 NB 2013+00 - 2027+00 Rt.

Three Cable Guard Rail with
 Light Steel Posts, Item 536*
 NB 2026+59 - 2027+00 Rt.

Drilling & Blasting for Solid Rock Subgrade
 Item 115
 NB 2013+00 - 2015+25
 SB 2011+00 - 2025+00

Construct Speed Change Lane
 For details see Standard Sheet B-15
 NB 2020+81 - 2027+00 Rt.



CONTRACT NO. 5
 STAGE I CONSTRUCTION
 TOWNS OF LYNDON - BARTON
 PROJECT I-91-3 (14)
 SECT. II
 STA. 2013+00 NB TO STA. 2027+00 NB
 2011+00 SB
 Sheet No. 10 of 34 Sheets
 BLAUVELT ENGINEERING CO. ORLEANS, VERMONT

CONTROL OF ACCESS COMPLETE ON THIS SHEET

