

Drilling & Blasting of Solid Rock Subgrade Item 115 SB 1961+75 - 1967+00

Treated Timber Curb, Item 538* NB 1959+50 - 1960+10 LF

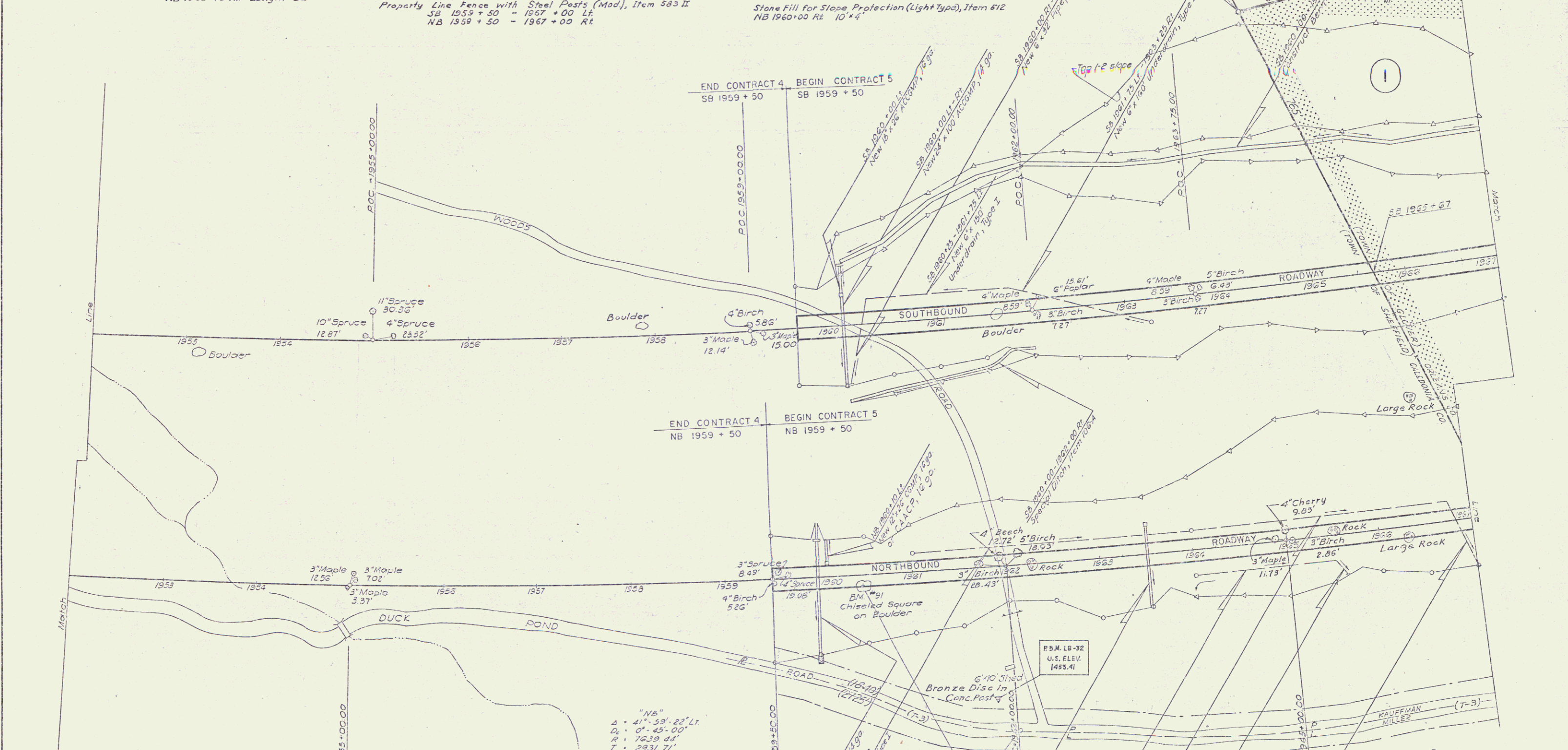
BEGIN R.O.W. PROJECT I-91-3 (14) SECT. II SB 1964+54

Three Cable Guard Rail w/ Light Steel Posts, Item 538* SB 1959+50 - 1961+70 Rt. NB 1959+50 - 1960+84 Lt. NB 1963+50 - 1963+00 Rt. NB 1965+52 - 1967+00 Rt.

Plank Guard Rail Item 540 NB 1962+75 Rt - Length = 52'

Property Line Fence with Steel Posts (Mod), Item 583 II SB 1959+50 - 1967+00 LF NB 1959+50 - 1967+00 Rt.

Stone Fill for Slope Protection (Light Type), Item 612 NB 1960+00 Rt 10' x 4'



END CONTRACT 4 SB 1959+50 BEGIN CONTRACT 5 SB 1959+50

END CONTRACT 4 NB 1959+50 BEGIN CONTRACT 5 NB 1959+50

CONTROL OF ACCESS COMPLETE ON THIS SHEET

* Denotes Stage II Construction

CONTRACT NO. 5 STAGE I CONSTRUCTION

TOWNS OF LYNDON-BARTON

PROJECT I-91-3 (14) SECT. II

STA. 1959+50 NB TO STA. 1967+00 NB
1959+50 SB TO STA. 1967+00 SB

Sheet No. 6 of 34 Sheets

BLAIRVELT ENGINEERING CO. ORANS, VERMONT