

Three Cable Guard Rail with Light Steel Posts, Item 536*

NB 1919+02.LT - NB 1920+00.LT
 NB 1912+74.RT - NB 1919+78.RT
 SB 1915+22.LT - SB 1920+00.LT
 SB 1916+00.RT - SB 1920+00.RT
 NB 1911+30.LT - NB 1913+22.LT

Property Line Fence with Steel Posts (Mod), Item 533-II

SB 1906+00 - 1920+00 LT
 NB 1905+00 - 1920+00 Rt

Truncated Timber Curb, Item 538*

NB 1912+74 - 1919+50 Rt
 SB 1915+22 - 1920+00 LT
 SB 1916+00 - 1920+00 Rt

Stone Fill for Slope Protection (Light Type) Item 512

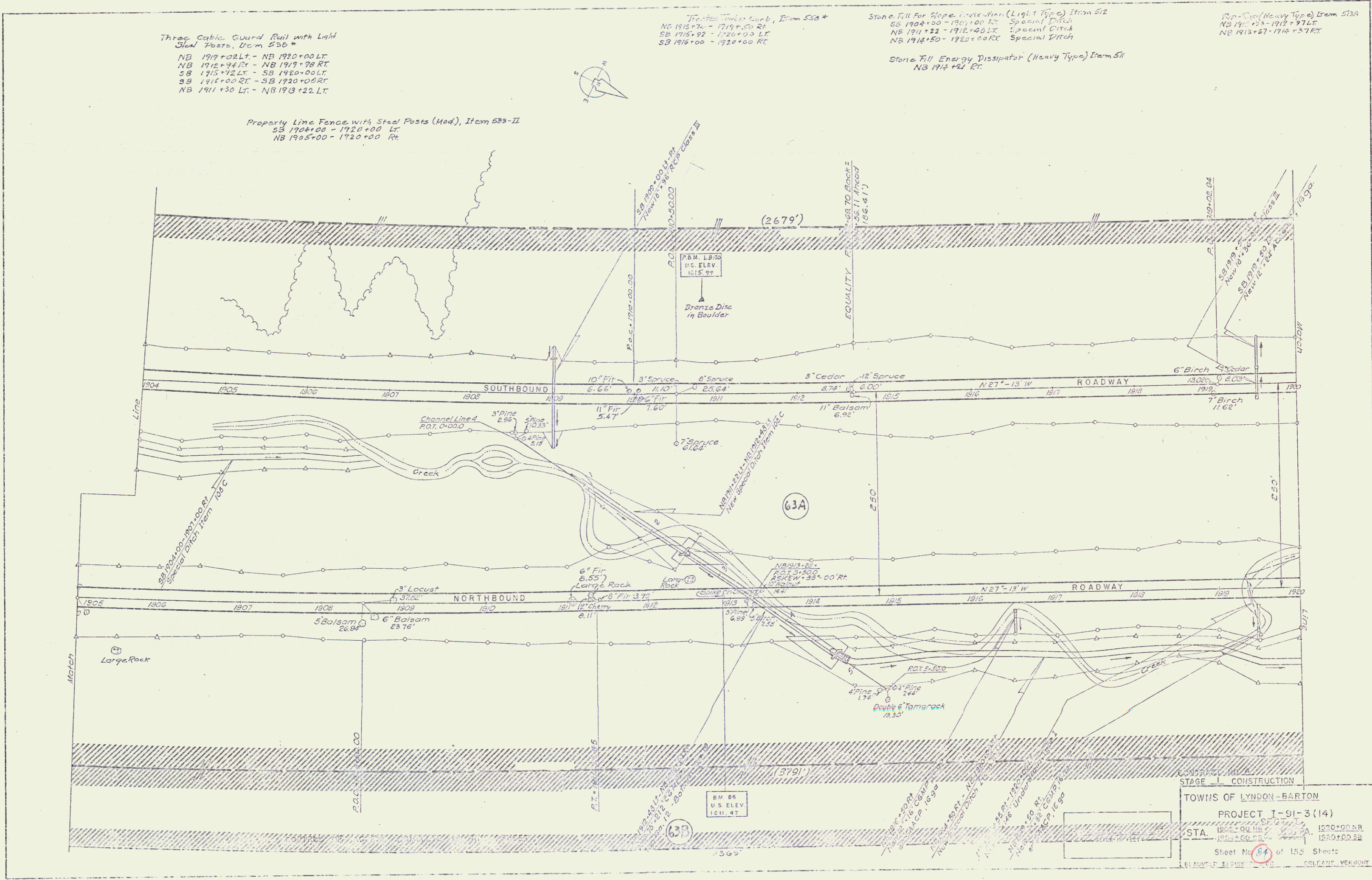
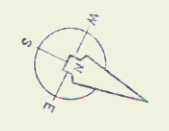
SB 1904+00 - 1905+00 Rt Special Ditch
 NB 1914+22 - 1918+40.LT Special Ditch
 NB 1914+50 - 1920+00.RT Special Ditch

Rip-Rap (Heavy Type) Item 513A

NB 1912+74 - 1918+78.LT
 NB 1913+27 - 1914+27.RT

Stone Fill Energy Dissipator (Heavy Type) Item 511

NB 1914+22 Rt



CONTRACT NO. 14
 STAGE I CONSTRUCTION

TOWNS OF LYNDON-BARTON

PROJECT I-91-3(14)

STA. 1801+00 TO 1820+00 NB
 1805+00 TO 1820+00 SB

Sheet No. 84 of 155 Sheets

REPLACEMENT BEARING 1000
 COLLEGE VERMONT