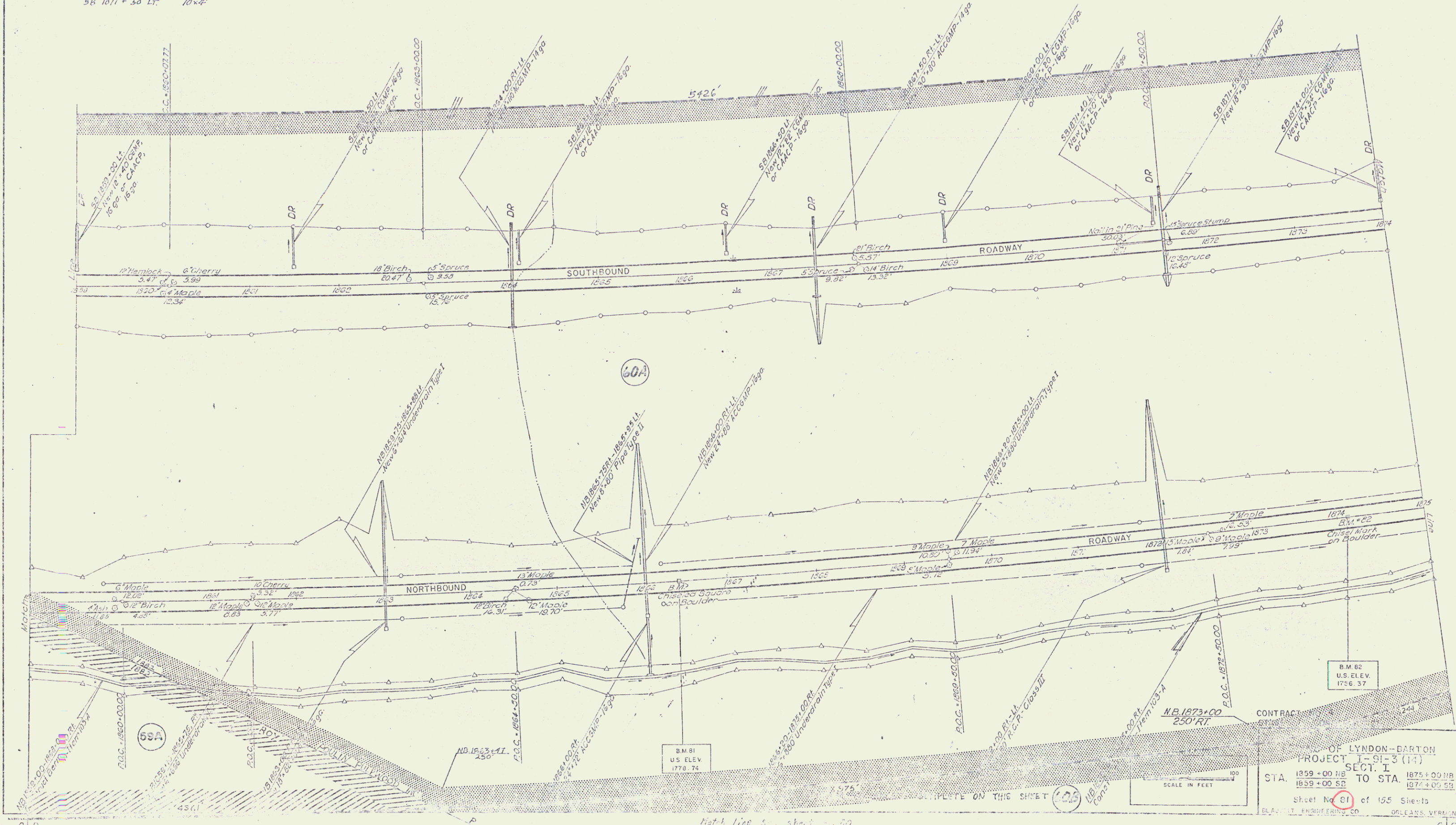
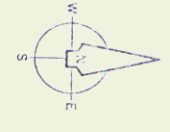


Three-Chain (6.25' Rail with Light Steel) Posts
 S.B. 1851+00 - 1851+14 R.C.T.
 S.B. 1851+00 - 1851+26 R.C.

Treated Timber Corp Item 530
 S.B. 1851+00 - 1851+14 R.C.T.
 S.B. 1851+00 - 1851+26 R.C.

Property Line Fence with Steel Posts (1/2"), Item 503 II
 S.B. 1859+00 - 1875+00 Lt
 N.B. 1859+00 - 1875+00 Rt

Stone Fill for Slope Protection (Light Type) Item 512
 S.B. 1844+00 Lt 10x4'
 S.B. 1857+50 Lt 10x5'
 S.B. 1871+50 Lt 10x2'



CONTRACT NO. 103-A
 OF LYNDON-DARTON
 PROJECT I-91-3 (11)
 SECT. I
 STA. 1859+00 NB TO STA. 1875+00 NB
 1859+00 SB TO STA. 1875+00 SB
 Sheet No. 01 of 155 Sheets
 D.L. & T. ENGINEERING CO. ORLEANS, VERMONT

Match line to sheet 00