

Treated Timber Curb
Item 558 *
NB 1844+00 To 1854+50 LT
SB 1852+00 To 1859+00 LT
Property Line Fence with Steel Posts (Mod), Item 583-Z
SB 1844+00 - 1859+00 LT
NB 1844+00 - 1859+00 RT

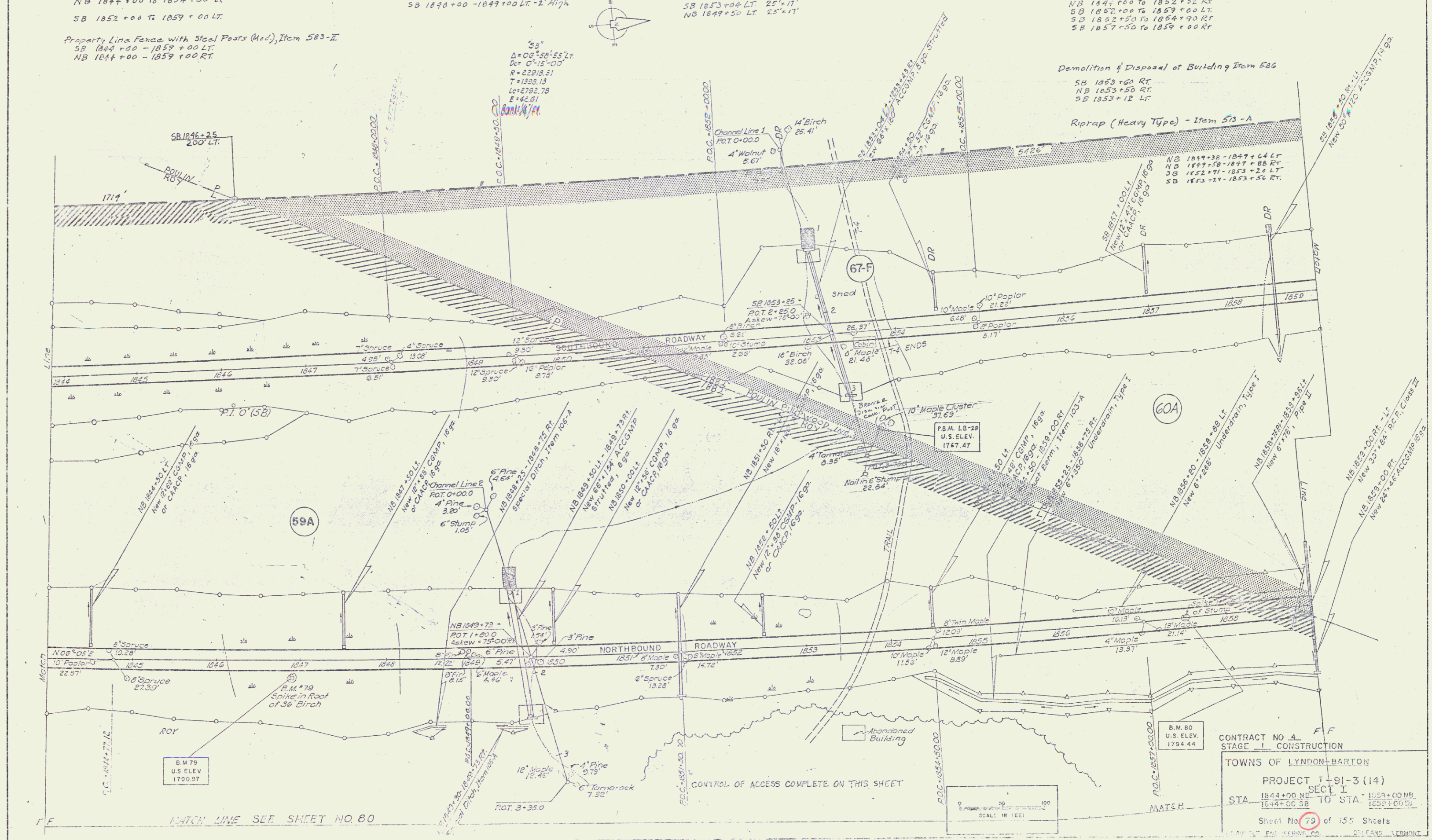
Stone Fill for Slope Protection
(Light Type), Item 512
NB 1844+00 - 1852+00 RT - 2' High
SB 1852+50 LT - 10' x 5'
SB 1850+00 - 1849+00 LT - 2' High

Plant Guide Item 549
SB 1853+45 LT - Length 16'

Stone Fill for Slope Protection
(Heavy Type), Item 511
SB 1853+04 LT - 25' x 11'
NB 1849+50 LT - 25' x 11'

Three Cable Guard Rail with Light
Steel Posts, Item 588 *
NB 1844+00 To 1854+75 LT
NB 1844+00 To 1852+52 RT
SB 1852+00 To 1859+00 LT
SB 1852+50 To 1854+50 RT
SB 1857+50 To 1859+00 RT

Demolition & Disposal of Building Item 586
SB 1853+00 RT
NB 1853+50 RT
SB 1853+12 LT
Riprap (Heavy Type) - Item 513-A
NB 1849+38 - 1849+44 LT
NB 1849+58 - 1849+58 RT
SB 1852+71 - 1853+20 LT
SB 1853+21 - 1853+56 RT



CONTRACT NO. 4 F.F.
STAGE 1 CONSTRUCTION
TOWNS OF LYNDON-BARTON
PROJECT I-91-3 (14)
SECT. I
STA. 1844+00 NB TO STA. 1859+00 NB
1844+00 SB TO STA. 1859+00 SB
Sheet No. 79 of 155 Sheets
SCALE IN FEET
MATCH