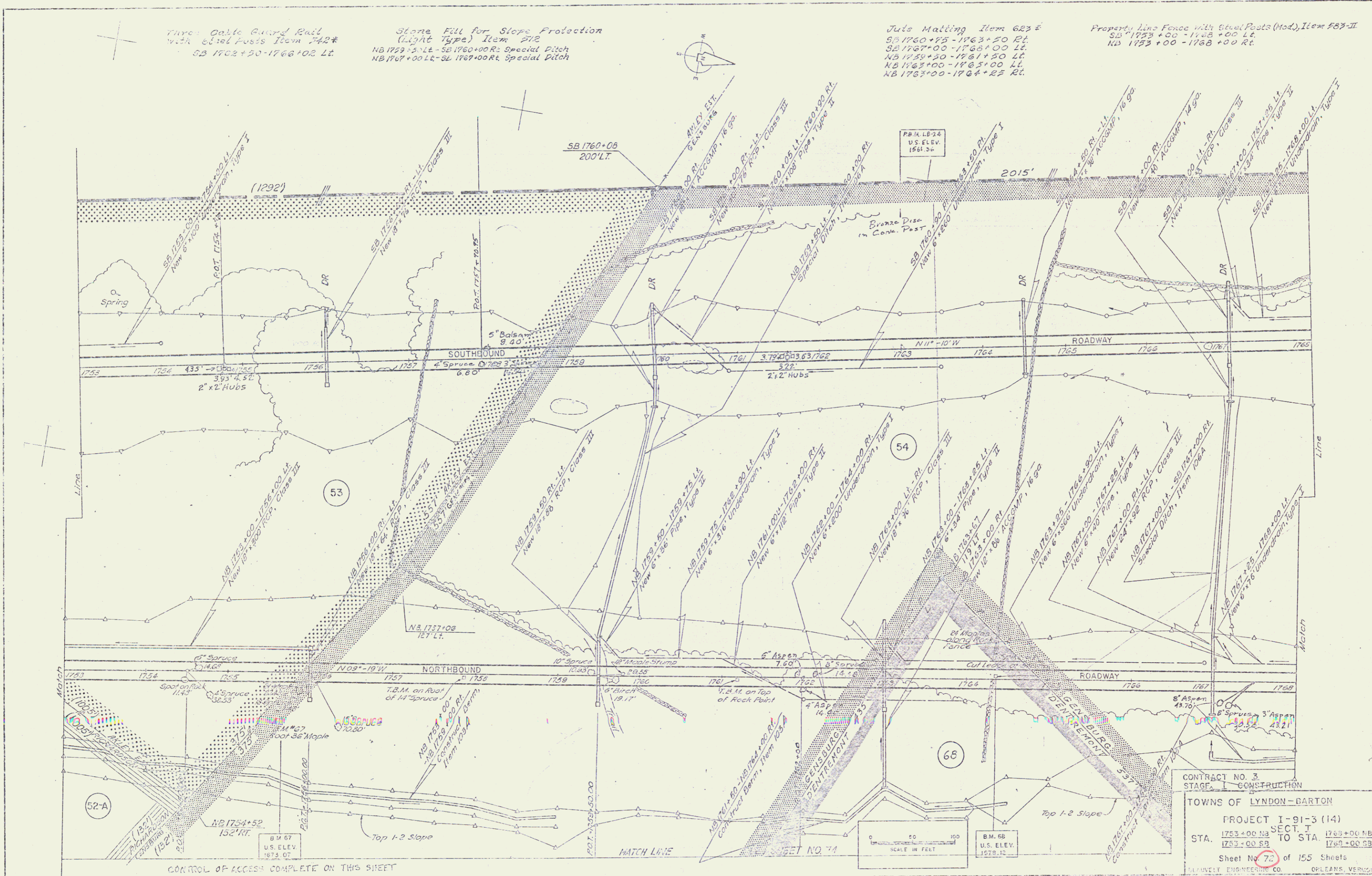


Three Cable Guard Rail  
with 60361 Posts Item 742\*

Stone Fill for Slope Protection  
(Light Type) Item 212  
NB 1753+00 LT - SB 1760+00 Rt. Special Ditch  
NB 1767+00 Lt - SB 1767+00 Rt. Special Ditch

Jul's Matting Item 623 E  
SB 1760+05 - 1763+50 Rt.  
SB 1767+00 - 1768+00 Lt.  
NB 1759+20 - 1761+20 Lt.  
NB 1763+00 - 1765+00 Lt.  
NB 1763+00 - 1764+25 Rt.

Property Line Fence with Steel Posts (Mod.) Item 837-II  
SB 1753+00 - 1758+00 Lt.  
NB 1753+00 - 1768+00 Rt.



CONTROL OF ACCESS COMPLETE ON THIS SHEET

CONTRACT NO. 3  
STAGE I CONSTRUCTION

TOWNS OF LYNDON-BARTON

PROJECT I-91-3 (14)  
SECT. I  
STA. 1753+00 NB TO STA. 1763+00 NB  
1753+00 SB TO STA. 1768+00 SB

Sheet No. 72 of 155 Sheets

SAFENELL ENGINEERING CO. OPLEANS, VERMONT