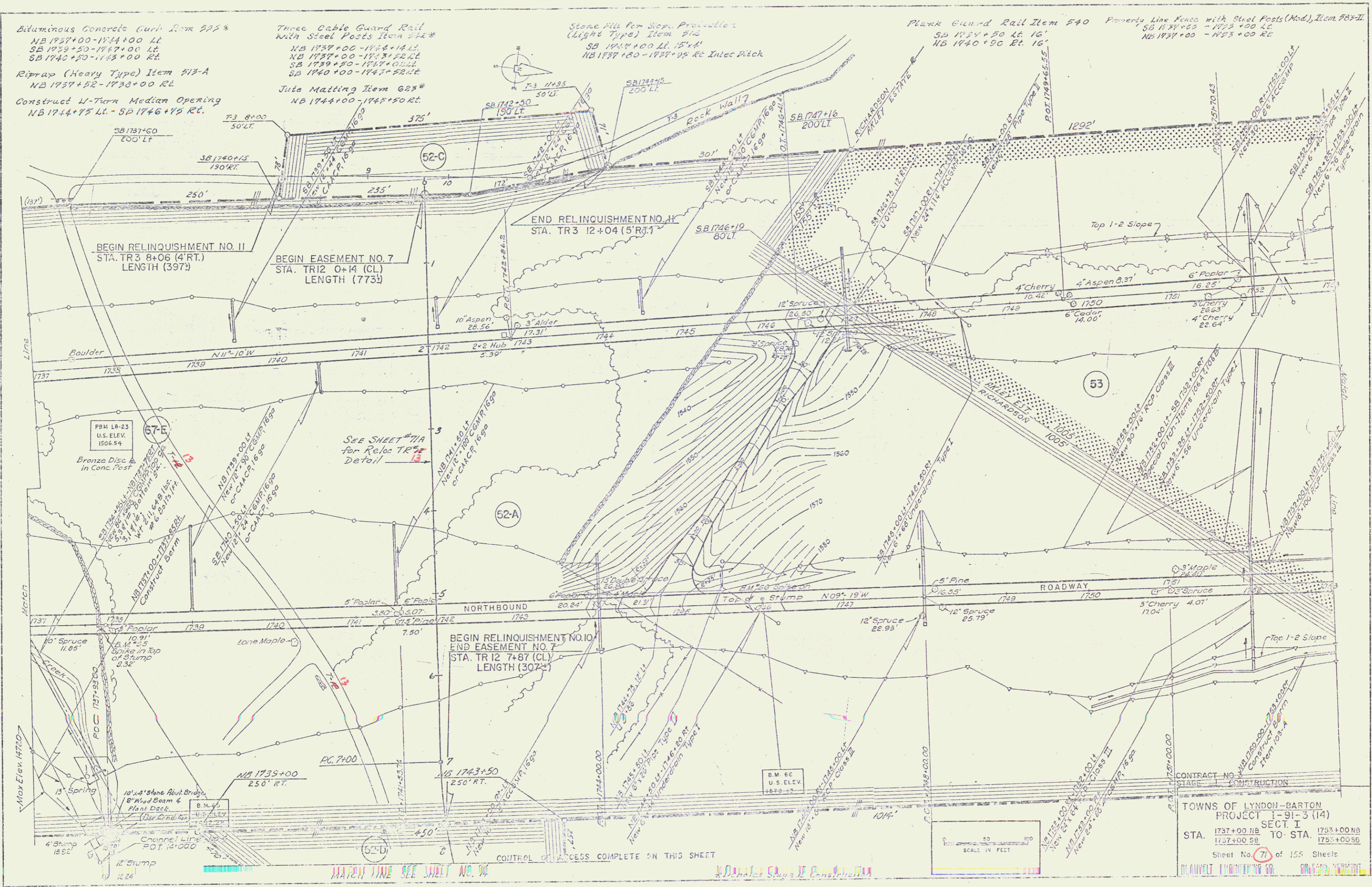


Bituminous Concrete Curb Item 525*
 NB 1737+00-1744+00 LT
 SB 1739+50-1747+00 LT
 SB 1740+50-1748+00 RT
 Riprap (Heavy Type) Item 513-A
 NB 1737+52-1738+00 RL
 Construct U-Turn Median Opening
 NB 1744+75 LT - SB 1746+75 RT.

Three Cable Guard Rail
 With Steel Posts Item 524*
 NB 1737+00-1742+14 LT
 NB 1737+00-1747+32 RT
 SB 1739+50-1747+00 LT
 SB 1740+00-1747+52 RT
 Julia Matting Item 623*
 NB 1744+00-1744+50 RT.

Stone Fill Per Slope Protection
 (Light Type) Item 512
 SB 1744+00 LT 15'x4'
 NB 1737+80-1737+95 RT Intec Ditch

Plank Guard Rail Item 540
 SB 1724+50 LT 16'
 NB 1740+90 RT 16'
 Property Line Fence with Steel Posts (Mod.) Item 503-II
 SB 1737+50 - 1738+00 LT
 NB 1737+00 - 1738+00 RT



CONTRACT NO. 3
 STAGE 1. CONSTRUCTION
 TOWNS OF LYNDON-BARTON
 PROJECT I-91-3 (14)
 SECTION I
 STA. 1737+00 NB TO STA. 1753+00 NB
 1737+00 SB TO STA. 1753+00 SB
 Sheet No. 71 of 156 Sheets
 DRAWN BY: R. H. HARRIS
 CHECKED BY: J. W. HARRIS