

Bituminous Concrete Curb, Item 295  
 NB 1721+50 - 1725+00 LT  
 SB 1725+00 - 1725+00 LT  
 SB 1725+00 - 1725+00 LT  
 Three Cable Guard Rail with Steel Posts, Item 248  
 NB 1722+00 - 1727+00 RT  
 NB 1721+50 - 1727+00 LT  
 SB 1725+00 - 1725+00 LT  
 SB 1729+00 - 1725+00 RT

Stone Fill for Slope Protection (Light Type), Item 212  
 NB 1721+50 RT - NB 1727+00 RT, 2" Rise  
 SB 1725+00 - 1725+00 RT, 2" Rise

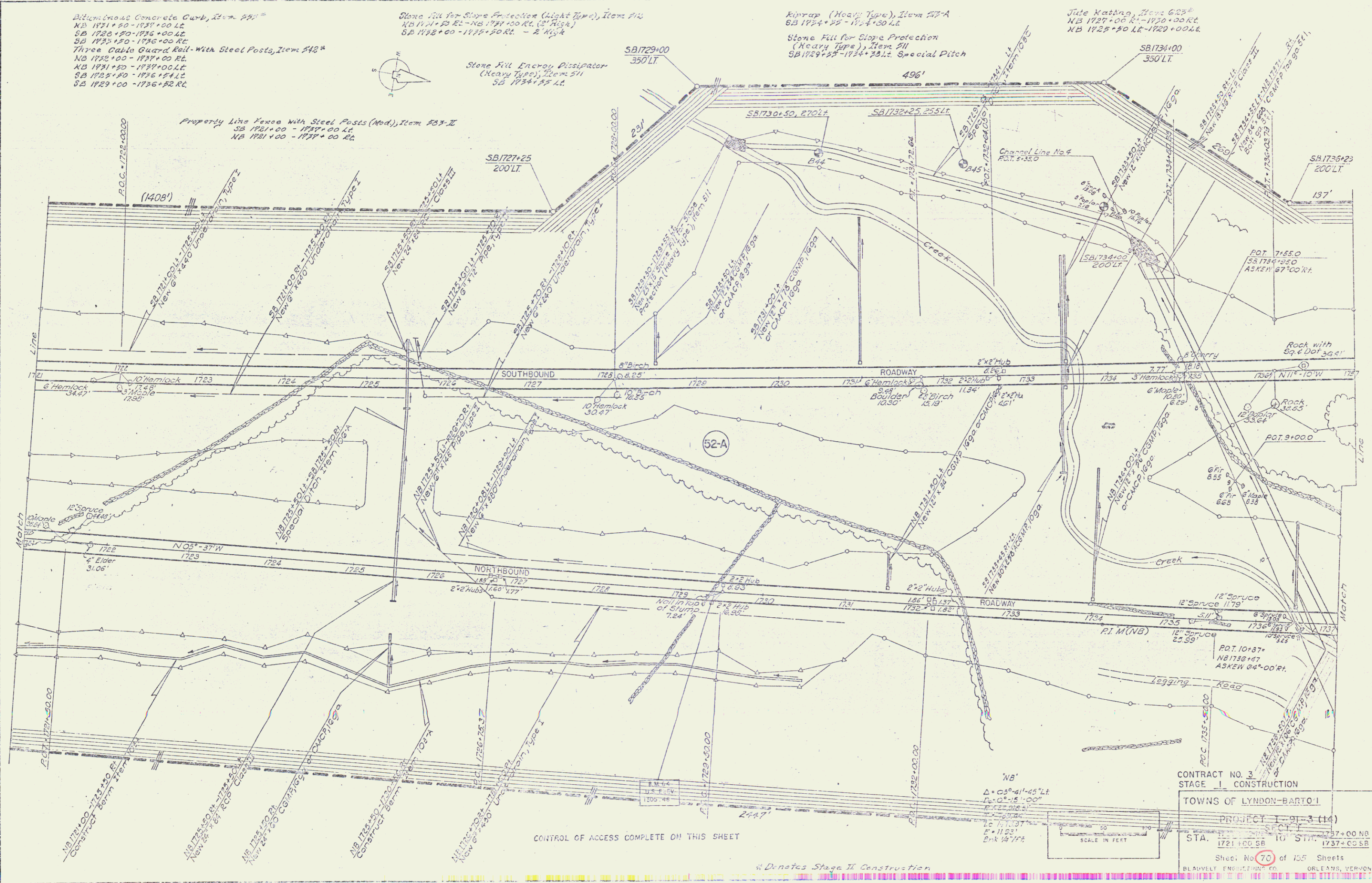
Stone Fill Energy Dissipator (Heavy Type), Item 211  
 SB 1724+50 LT

Kinrap (Heavy Type), Item 217-A  
 SB 1724+50 - 1724+50 LT

Stone Fill for Slope Protection (Heavy Type), Item 211  
 SB 1724+50 - 1724+50 LT, Special Pitch

Jute Matting, Item 208  
 NB 1727+00 RT - 1727+00 RT  
 NB 1725+00 LT - 1725+00 LT

Property Line Fence with Steel Posts (Mod.), Item 203-II  
 SB 1721+00 - 1727+00 LT  
 NB 1721+00 - 1727+00 RT



CONTROL OF ACCESS COMPLETE ON THIS SHEET

\* Denotes Stage II Construction

CONTRACT NO. 3  
 STAGE 1 CONSTRUCTION  
 TOWNS OF LYNDON-BARTO I  
 PROJECT 1-91-3 (14)  
 STA. 1721+00 SB TO STA. 1737+00 NB  
 1737+00 SB  
 Sheet No. 70 of 155 Sheets  
 BLAVELY ENGINEERING CO. ORLEANS, VERMONT