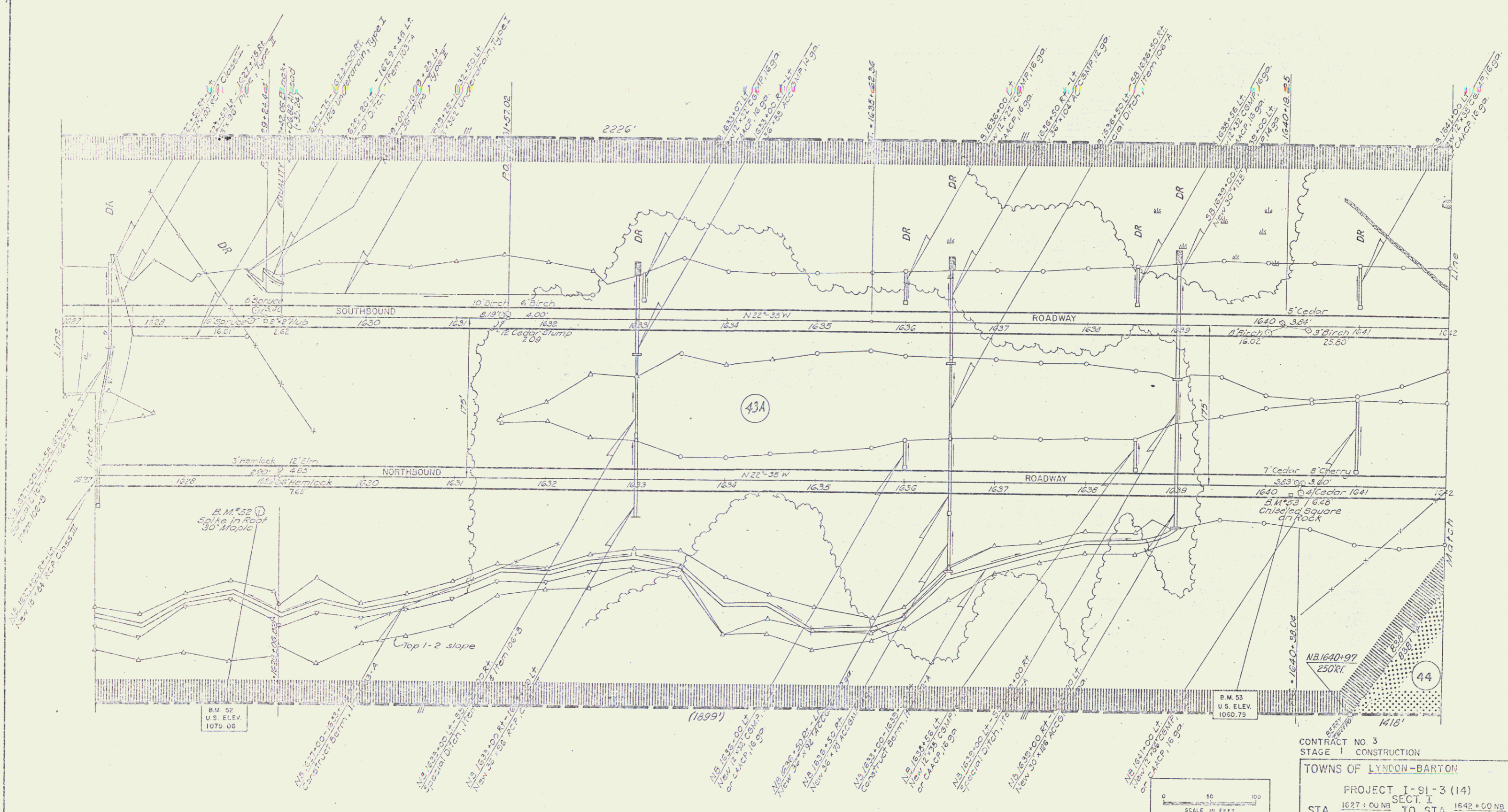


Bituminous Concrete Paved
 12' wide, 7" thick
 SB 1633+00-1642+00 Lt.
 NB 1627+00-1642+00 Lt.

Triple Cable Guard Rail with
 Steel Posts, Item 244
 SA 1627+00-1642+00 Lt.
 SB 1632+00-1642+00 Lt.
 SB 1642+00-1642+00 Rt.
 KB 1677+25-1642+00 Lt.

Stone Fill for Slope Protection
 (Light Type), Item 212
 NB 1627+00 Lt. - SB 1636+50 Rt. - Special Pitch
 NB 1639+00 Lt. - SB 1639+00 Rt. - Special Pitch
 SB 1639+00 Lt. 15' x 5'
 SB 1639+00 Lt. 15' x 5'
 SB 1639+00 Lt. 15' x 5'

Standard Steel Beam Guard Rail
 with Steel Posts, Item 247-A
 SB 1623+98-1629+42 Rt. Lt.
 Property Line Fence with Steel Posts (Mod.), Item 233-II
 SB 1627+00-1642+00 Lt.
 NB 1627+00-1642+00 Rt.

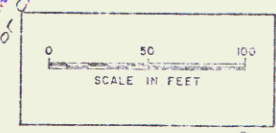


B.M. 52
 U.S. ELEV.
 1079.00

B.M. 53
 U.S. ELEV.
 1060.79

CONTROL OF ACCESS COMPLETE ON THIS SHEET.

* Includes Stage 2 Construction



CONTRACT NO. 3
 STAGE 1 CONSTRUCTION
 TOWNS OF LYNDON-BARTON
 PROJECT I-91-3 (14)
 SECTION I
 STA. 1627+00 NB TO STA. 1642+00 NB
 1627+00 SB TO 1642+00 SB
 Sheet No. 64 of 155 Sheets
 BLAUVELT ENGINEERS CO. CHILMARK, VERMONT