

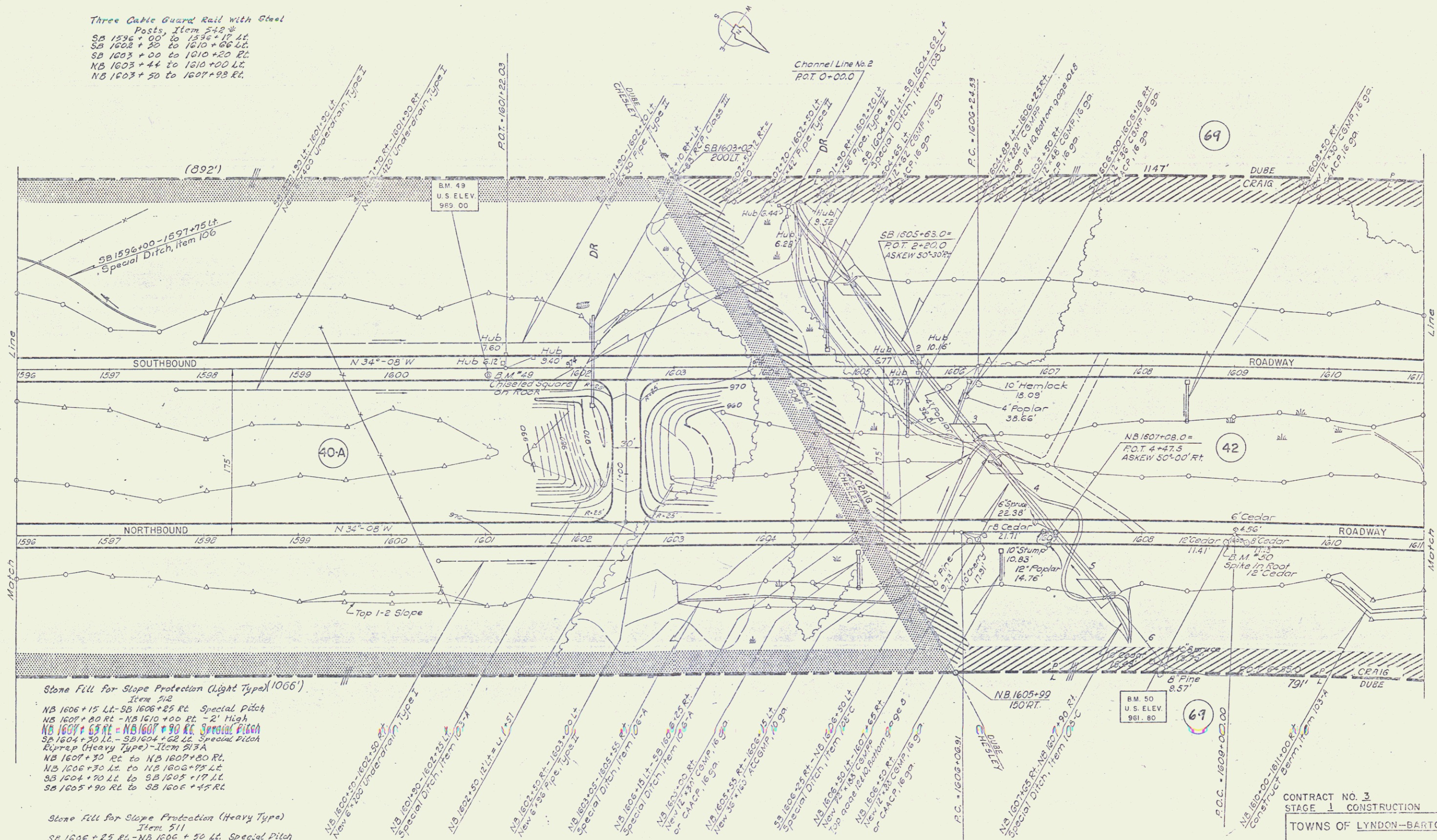
Discontinuous Concrete Curb
Item 532
NB 1603+50 - 1604+98 RT
SB 1602+50 - 1604+62 LT
SB 1603+00 - 1610+20 RT

Three Cable Guard Rail with Steel Posts, Item 542
SB 1596+00 to 1597+75 LT
SB 1602+50 to 1610+66 LT
SB 1603+00 to 1610+20 RT
NB 1603+44 to 1610+00 LT
NB 1603+50 to 1607+98 RT

Construct U-Turn Median Opening
SB 1606+50 RT - NB 1602+50 LT

Stone Fill Energy Dissipator
(Heavy Type), Item 511
SB 1604+65 LT

Property Line Fence with Steel Posts (1/4" dia), Item 533-III
SB 1616+00 - 1611+00 LT
NB 1295+00 - 1611+00 RT



Stone Fill for Slope Protection (Light Type) (1066)
Item 512
NB 1606+15 LT - SB 1606+25 RT Special Pitch
NB 1607+80 RT - NB 1610+00 RT - 2' High
NB 1604+65 RT - NB 1607+90 RT Special Pitch
SB 1604+50 LT - SB 1604+62 LT Special Pitch
Riprap (Heavy Type) - Item 513A
NB 1607+50 RT to NB 1607+20 RT
NB 1606+50 LT to NB 1606+75 LT
SB 1604+50 LT to SB 1605+17 LT
SB 1605+90 RT to SB 1606+45 RT

Stone Fill for Slope Protection (Heavy Type)
Item 511
SB 1606+25 RT - NB 1606+50 LT Special Pitch

NB 1604+50 LT - SB 1604+62 LT Special Ditch, Item 1037A
NB 1605+15 RT - NB 1605+17 LT Special Ditch, Item 1037B
NB 1606+15 RT - NB 1606+25 RT Special Ditch, Item 1037C
NB 1607+15 RT - NB 1607+20 RT Special Ditch, Item 1037D
NB 1608+15 RT - NB 1608+20 RT Special Ditch, Item 1037E
NB 1609+15 RT - NB 1609+20 RT Special Ditch, Item 1037F
NB 1610+15 RT - NB 1610+20 RT Special Ditch, Item 1037G
NB 1604+65 LT - NB 1604+65 LT Special Ditch, Item 1037H
NB 1605+15 RT - NB 1605+17 LT Special Ditch, Item 1037I
NB 1606+15 RT - NB 1606+25 RT Special Ditch, Item 1037J
NB 1607+15 RT - NB 1607+20 RT Special Ditch, Item 1037K
NB 1608+15 RT - NB 1608+20 RT Special Ditch, Item 1037L
NB 1609+15 RT - NB 1609+20 RT Special Ditch, Item 1037M
NB 1610+15 RT - NB 1610+20 RT Special Ditch, Item 1037N

CONTROL OF ACCESS COMPLETE ON THIS SHEET

CONTRACT NO. 3
STAGE 1 CONSTRUCTION
TOWNS OF LYNDON-BARTON
PROJECT 1-91-3 (14)
SECT 1
STA. 1596+00 NB TO STA. 1611+00 NB
1596+00 SB TO STA. 1611+00 SB
Scale 1" = 40' (Horizontal)
Scale 1" = 20' (Vertical)
Sheet No. 62 of 155 Sheets
E. FAUVEL ENGINEERING CO. ORLANDO, VERMONT