

Automatic Concrete (Light Type)
 NB 1594+25 - 1594+25 LT
 SB 1594+25 - 1594+25 LT
 NB 1594+25 - 1594+25 LT
 SB 1594+25 - 1594+25 LT
 NB 1594+25 - 1594+25 LT
 SB 1594+25 - 1594+25 LT

Three (3) Inch Hard L. with Steel Posts, 2" x 2" x 2"
 NB 1594+25 - 1594+25 LT
 SB 1594+25 - 1594+25 LT
 NB 1594+25 - 1594+25 LT
 SB 1594+25 - 1594+25 LT
 NB 1594+25 - 1594+25 LT
 SB 1594+25 - 1594+25 LT

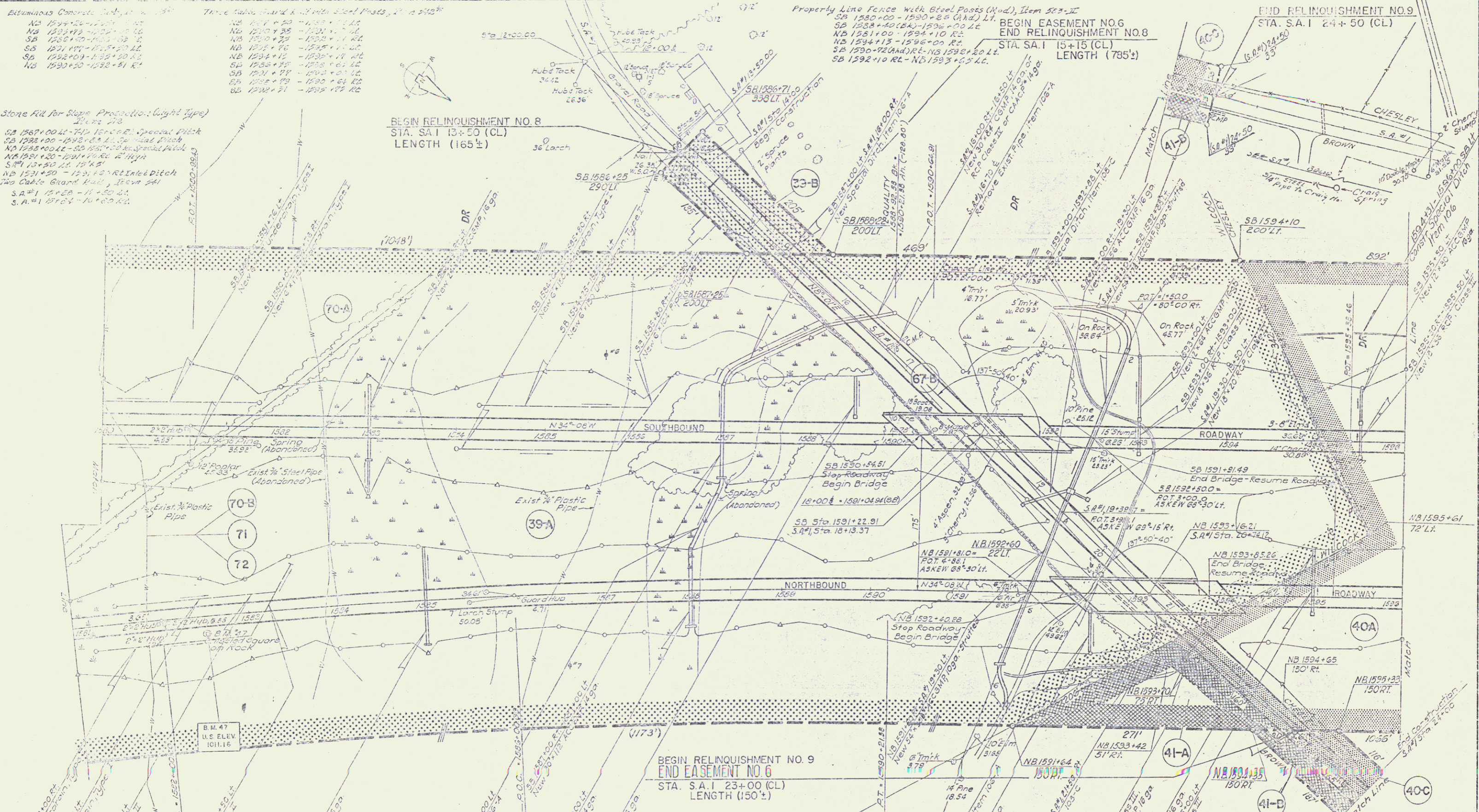
Property Line Fence with Steel Posts (Mod.) Item 503-2
 SB 1580+00 - 1590+25 (Add.) Lt.
 SB 1580+00 - 1590+25 (Add.) Lt.
 NB 1581+00 - 1594+10 Rt.
 NB 1594+13 - 1596+04 Rt.
 SB 1590+25 (Add.) Rt. - NB 1594+25 Lt.
 SB 1592+10 Rt. - NB 1593+25 Lt.

BEGIN EASEMENT NO. 6
 END RELINQUISHMENT NO. 8
 STA. S.A. I 15+15 (CL)
 LENGTH (785'±)

Stone Kiln for Slope Protection (Light Type)
 STA. S.A. I 13+50 (CL)
 SB 1567+00 Lt. - 740' 18" x 60" Special Pitch
 SB 1567+00 - 1590+25 Lt. Special Pitch
 NB 1567+00 - 1590+25 Lt. Special Pitch
 NB 1567+00 - 1590+25 Lt. Special Pitch
 NB 1567+00 - 1590+25 Lt. Special Pitch
 NB 1567+00 - 1590+25 Lt. Special Pitch

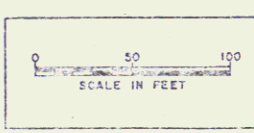
BEGIN RELINQUISHMENT NO. 8
 STA. S.A. I 13+50 (CL)
 LENGTH (165'±)

END RELINQUISHMENT NO. 9
 STA. S.A. I 24+50 (CL)



BEGIN RELINQUISHMENT NO. 9
 END EASEMENT NO. 6
 STA. S.A. I 23+00 (CL)
 LENGTH (150'±)

CONTRACT NO. 3
 STAGE 1 CONSTRUCTION
 TOWNS OF LYNDON - BARTON
 PROJECT T-91-3 (14)
 STA. 1581+00 NB TO STA. 1596+00 NB
 1580+00 SB TO STA. 1596+00 SB
 Sheet No. 61 of 155 Sheets
 CLARK & BENTLEY, INC. GREENLAND, VERMONT



CONTROL OF ACCESS COMPLETE ON THIS SHEET

* Double Stage Construction