

Continuous concrete curb, Item 535*
 NB 1470+00 to 1473+00 Lt.

SB 1471+00 to 1442+50 Lt.
 SB 1470+50 to 1479+50 Rt.

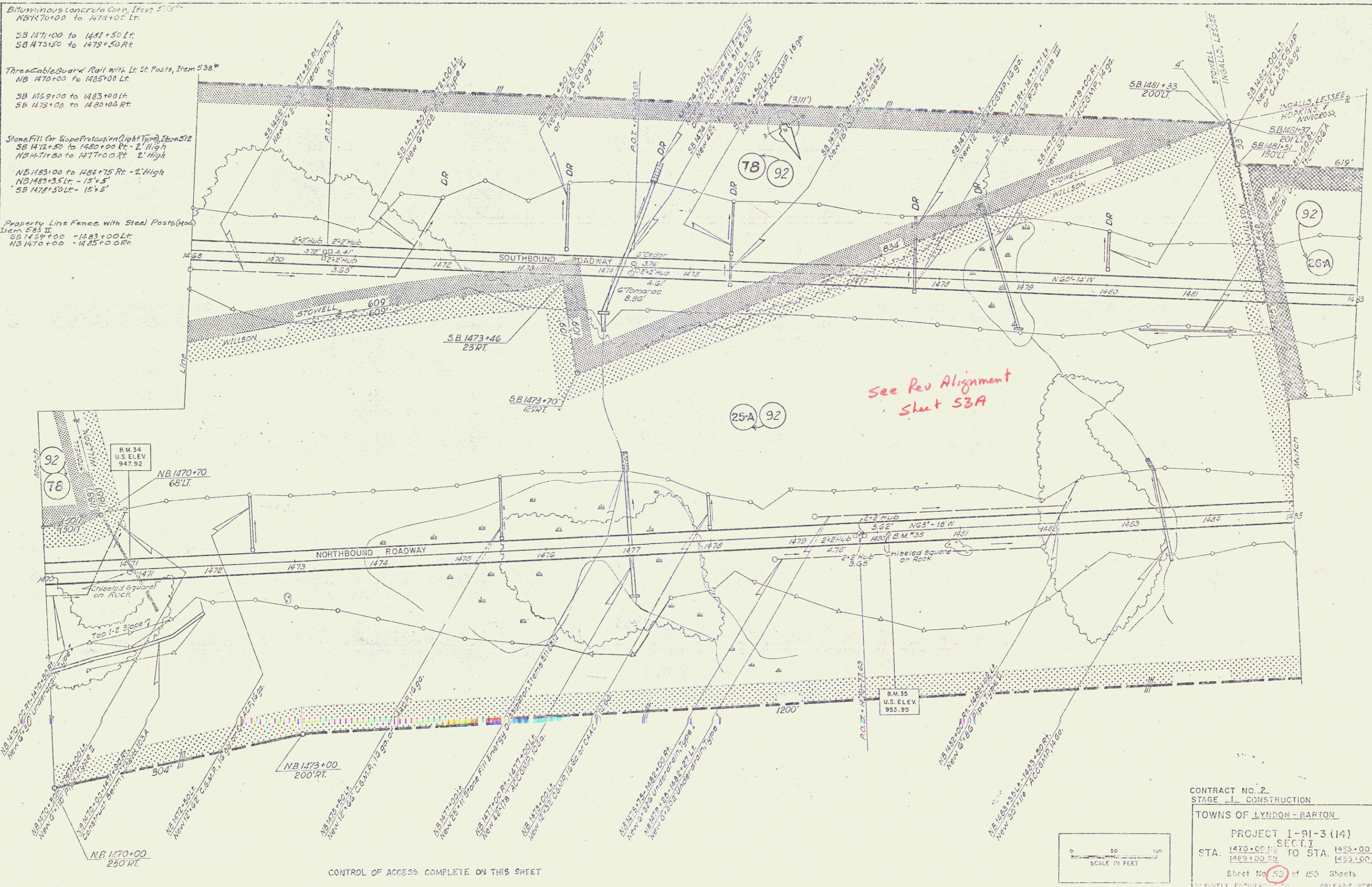
Three Cable Guard Rail with Lt. St. Posts, Item 53a*
 SB 1470+00 to 1485+00 Lt.

SB 1469+00 to 1483+00 Lt.
 SB 1475+00 to 1480+00 Rt.

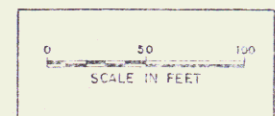
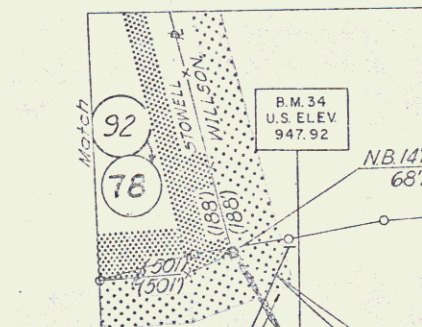
Stone Fill for Slope Protection (Light Type) Item 512
 SB 1472+50 to 1480+00 Rt. - 2' High
 NB 1471+00 to 1477+00 Rt. - 2' High

NB 1483+00 to 1484+75 Rt. - 2' High
 NB 1489+35 Lt. - 15' x 5'
 SB 1478+50 Lt. - 15' x 5'

Property Line Fence with Steel Posts (400)
 Item 583 II
 SB 1459+00 - 1483+00 Lt.
 NB 1470+00 - 1485+00 Rt.



See Rev Alignment
 Sheet S3A



CONTRACT NO. 2
 STAGE I CONSTRUCTION
 TOWNS OF LYNDON - BARTON
 PROJECT I-91-3 (14)
 STA. 1470+00 TO STA. 1493+00 NB
 1469+00 SB
 Sheet No. 32 of 150 Sheets
 VERMONT DEPARTMENT OF TRANSPORTATION
 CANTON, VERMONT

CONTROL OF ACCESS COMPLETE ON THIS SHEET